

From mountain to sea

# Low Cost Shared Equity FOR SALE

18 Correen Way, Alford AB33 8FA

2 bed end terrace house  
£114,600



## Low Cost Shared Equity - Property Schedule

### Description

2 bed end terrace house.

### Price

£114,600

### Floor Space

Not known.

### Income Threshold

£43,000 or less.

### Included in Sale

Fridge, washing machine and cooker.

### Factoring Charge

PMC Property - £22 per month for grounds and path maintenance, park maintenance.

### Parking Arrangements

2 car driveway.

### Council Tax Band

Band C

### Garden

Private Garden.

### Year Built

2015

### Heating Type

Oil central heating.

### Eligibility Criteria

See Guidance Notes for Eligibility Criteria.

### Energy Performance Rating

Not known.

### Closing Date

Return applications as soon as possible. Applications will be assessed on a first come basis.

### Disclaimer

The information in this schedule regarding the specific property has been supplied by the owner and whilst every care has been taken in the preparation of this schedule and the information is believed to be correct, it does not warrant or constitute any offer or contract.

\*Factoring fees may be subject to change and may require an initial deposit. Please discuss with your solicitor if nominated.

---

Living Room



Alternative View of Living Room



Kitchen



Alternative View of Kitchen



Kitchen Dining Area



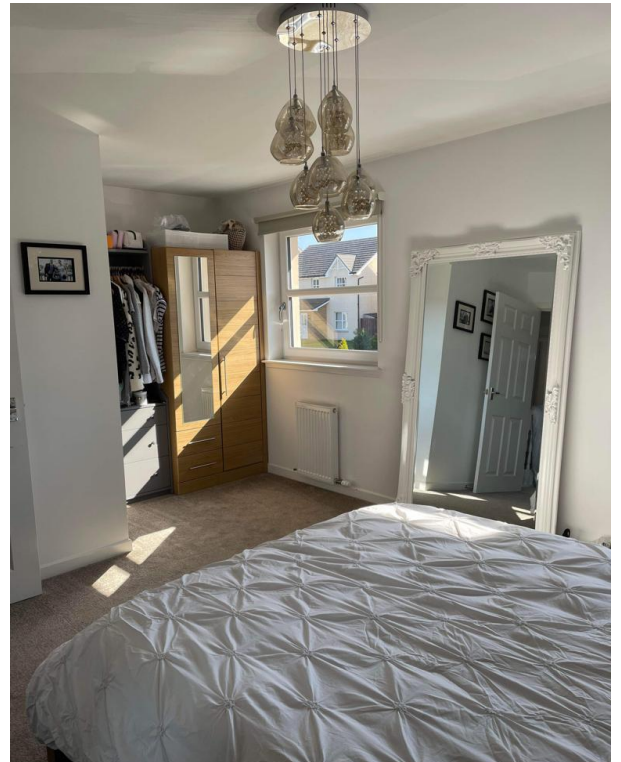
Downstairs Toilet



Bedroom 1



Alternative View of Bedroom 1



Bedroom 2



Top Landing



Bathroom



Alternative View of Bathroom



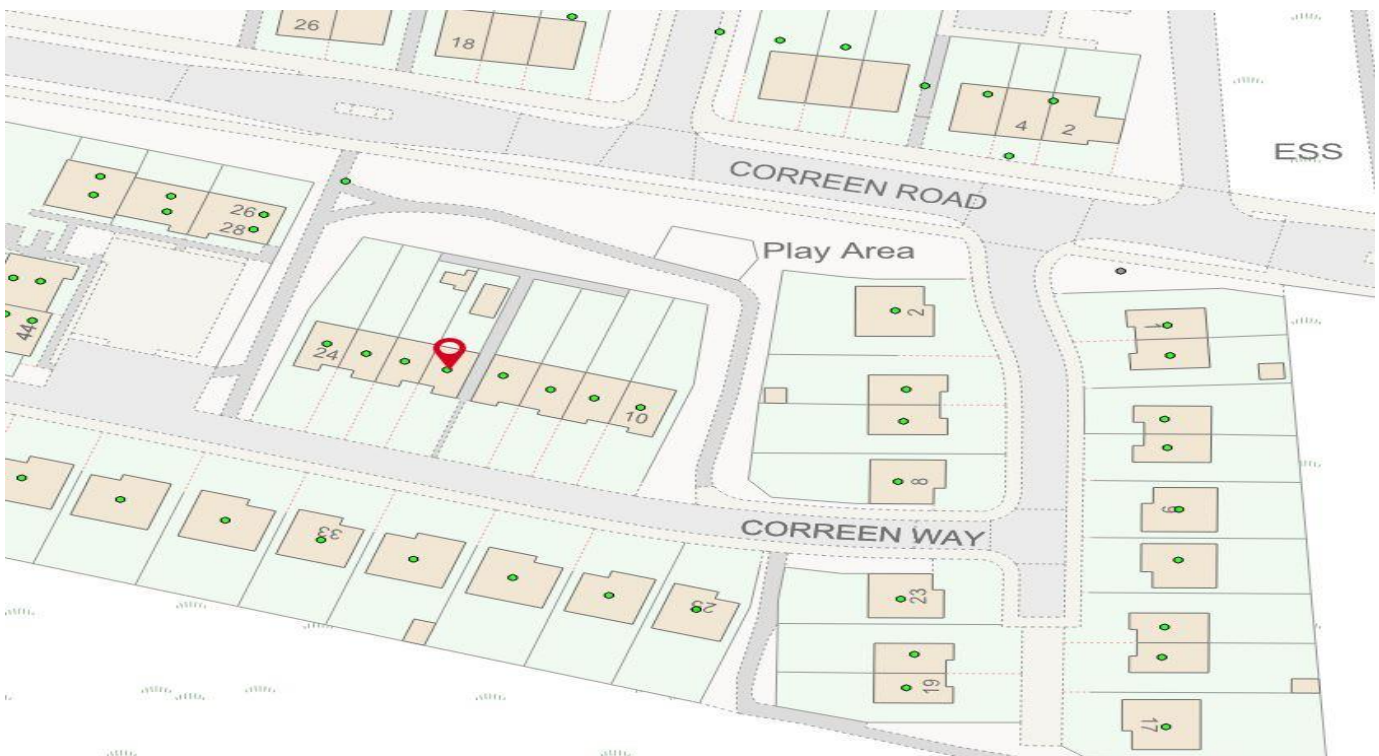
## Back Garden



## Location



The village of Alford is located approximately 26 miles from Aberdeen. The village has a good range of local shops, a post office, banks and a primary and secondary school. There are excellent sporting facilities including a dry ski slope, swimming pool, golf course and Haughton Country Park, Alford is also an ideal commuter base for Aberdeen, Inverurie and the industrial estates of Westhill, Kingswells, Bridge of Don and Dyce.



## Further Information

**For further information please contact:**  
Development Officer - 01467 539457  
[LCHO@aberdeenshire.gov.uk](mailto:LCHO@aberdeenshire.gov.uk)