

From mountain to sea

# Low Cost Shared Equity FOR SALE

90 Brae Road, Gourdon, DD10 0LX

3 bed semi-detached house  
£146,165



## Low Cost Shared Equity - Property Schedule

### Description

3 bed semi-detached house

### Price

£146,165

### Floor Space

90 m<sup>2</sup>

### Income Threshold

£53,000 or less.

### Included in Sale

Nothing included.

### Factoring Charge

None

### Parking Arrangements

Private driveway

### Council Tax Band

Band C

### Garden

Private garden

### Year Built

2016

### Heating Type

Oil

### Eligibility Criteria

See Guidance Notes for Eligibility Criteria.

### Energy Performance Rating

Not known

### Closing Date

Return applications as soon as possible.  
Applications will be assessed on a first come basis.

### Disclaimer

The information in this schedule regarding the specific property has been supplied by the owner and whilst every care has been taken in the preparation of this schedule and the information is believed to be correct, it does not warrant or constitute any offer or contract.

**\*Factoring fees may be subject to change and may require an initial deposit. Please discuss with your solicitor if nominated.**

---

Living Room Area



Alternative View of Living Room Area



Kitchen Area



Alternative View of Kitchen Area



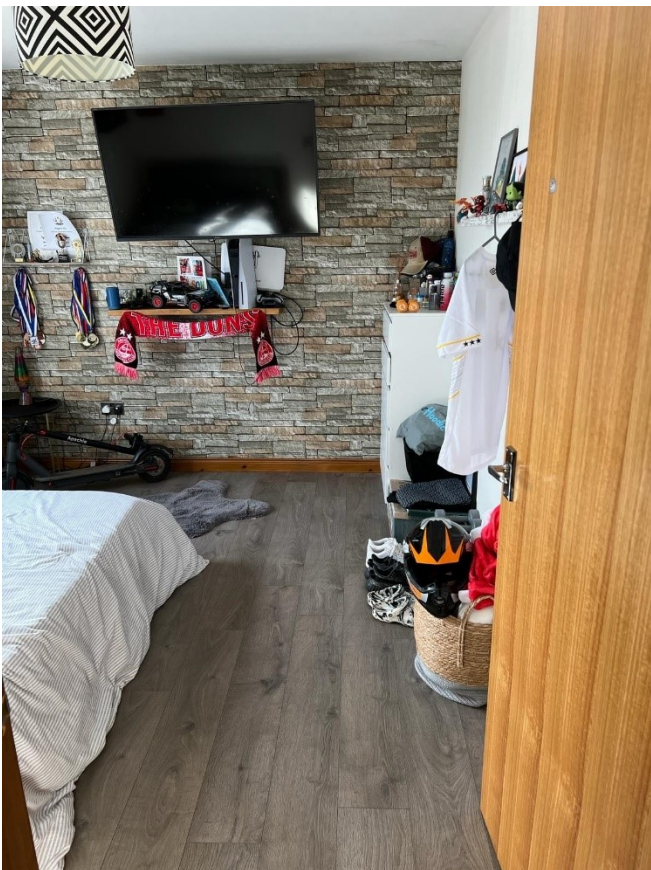
Bedroom 3 (Downstairs)



Alternative View of Bedroom 3



Alternative View of Bedroom 3



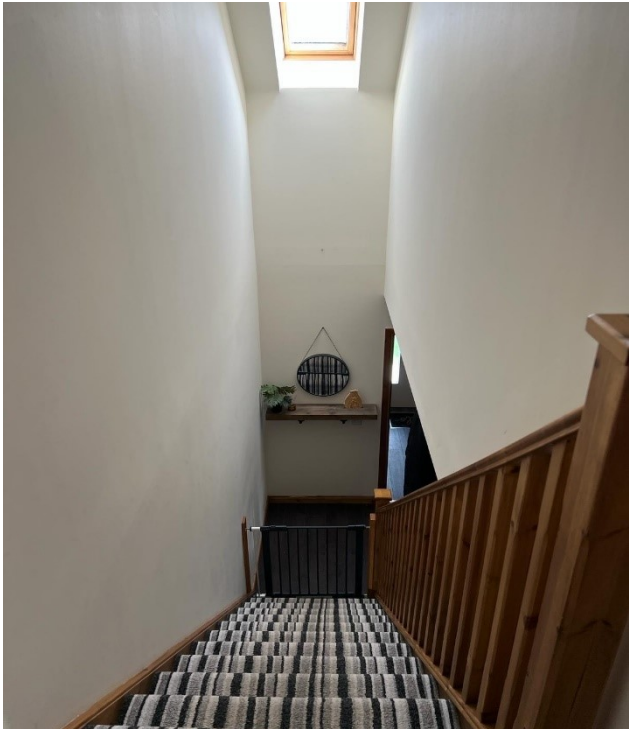
Downstairs Bathroom



Alternative View of Downstairs Bathroom



Stairs



Top Landing



Bedroom 1



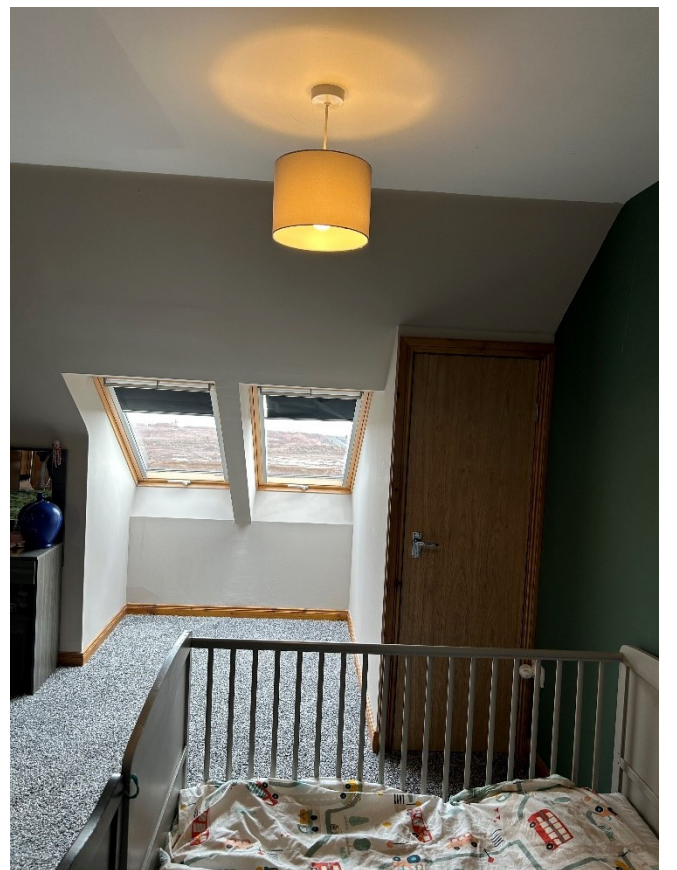
Alternative View of Bedroom 1



Alternative View of Bedroom 1



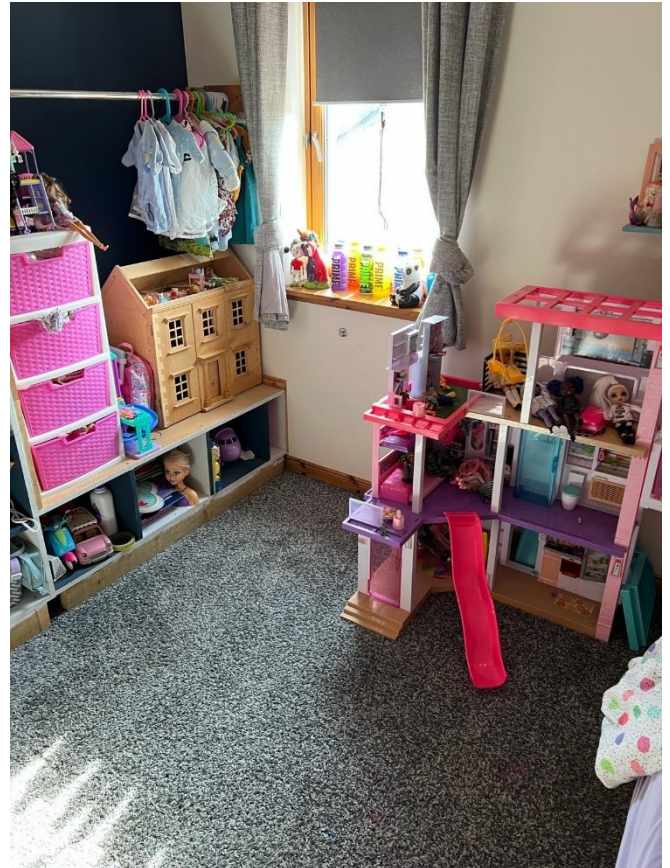
Alternative View of Bedroom 1



Bedroom 2



Alternative View of Bedroom 2



Alternative View of Bedroom 2



Upstairs Bathroom



Shower



Back Garden



Alternative View of Back Garden





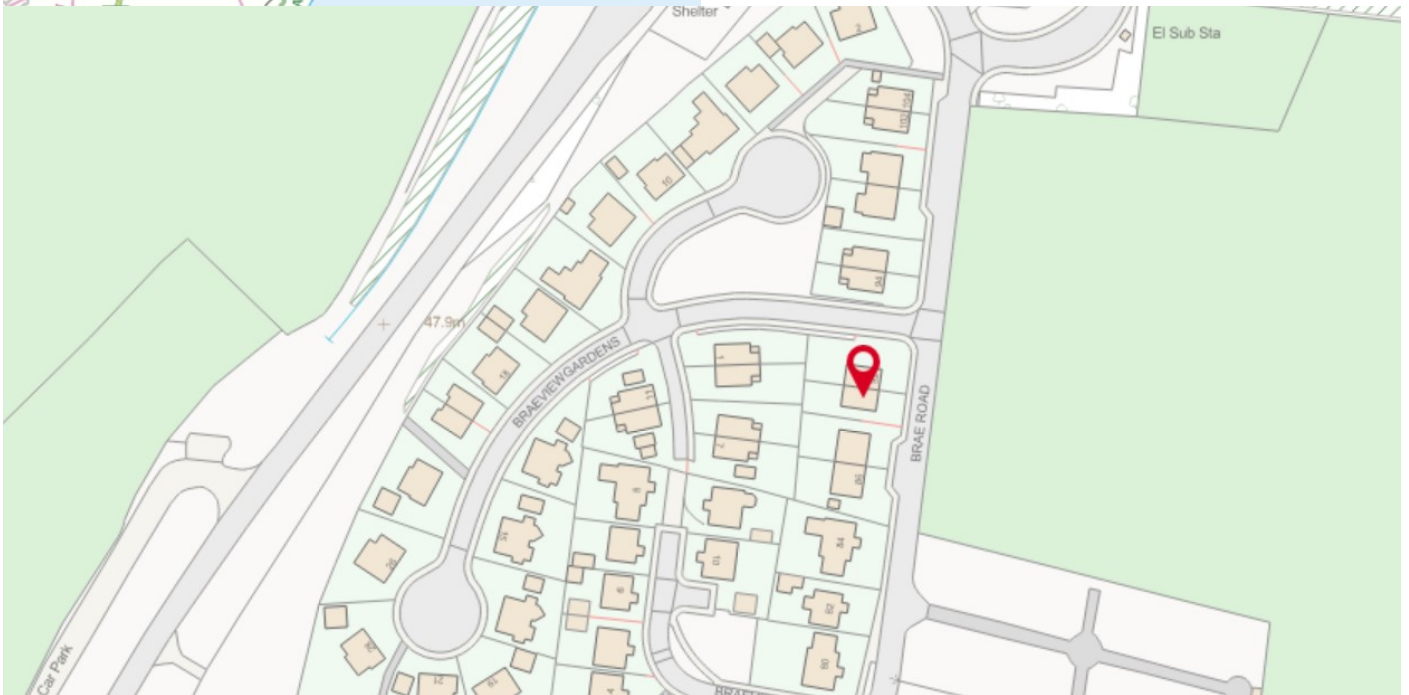
## Location



Gourdon is a coastal village situated between Montrose and Stonehaven. Aberdeen is just 27 miles away making Gourdon rural yet convenient for access to the closest city.

Less than 2 miles away is the coastal village of Inverbervie which provides health care services and shops. The secondary school is nearby in Stonehaven and Gourdon itself provides a primary school. Further shops, eateries, healthcare services, and supermarkets are found in the towns Montrose and Stonehaven.

There are other coastal villages and towns surrounding Gourdon offering a range of recreational activities.



## Further Information

**For further information please contact:**  
Development Officer - 01467 539457  
[LCHO@aberdeenshire.gov.uk](mailto:LCHO@aberdeenshire.gov.uk)