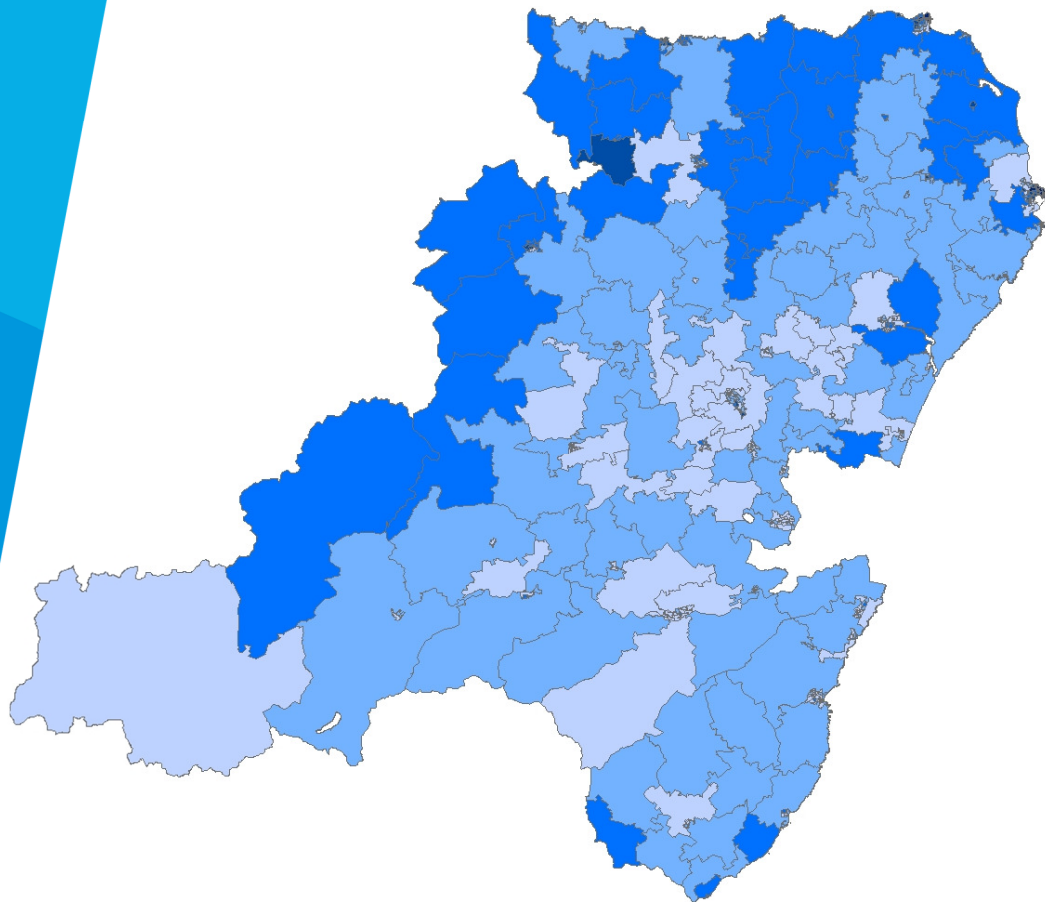


Scottish Index of Multiple Deprivation

2016 Report

Planning, Information and Delivery Team

January 2017



Scottish Index of Multiple Deprivation

Summary

Within the Scotland context (32 Council areas), Aberdeenshire has no data zones within the 5% most deprived in Scotland.

Aberdeenshire is one of five Council areas in Scotland with the 'most data zones without deprivation', but there are still some deprived areas.

Deprivation tends to be concentrated in Banff and Buchan and Buchan, primarily in parts of Fraserburgh and Peterhead.

Six of Aberdeenshire's 340 data zones are in the 20% overall most deprived zones in Scotland. Three of these are within the 10% most deprived. These are found in Peterhead and Fraserburgh.

A third of Aberdeenshire's data zones fall in the 20% overall least deprived in Scotland. Five of the ten overall least deprived data zones in Aberdeenshire are in Westhill.

Scottish Index of Multiple Deprivation

2016 Report

This report has been prepared by Aberdeenshire Council's Planning, Information and Delivery Team and outlines the main findings for Aberdeenshire from the Scottish Index of Multiple Deprivation 2016.

The report covers:

- An introduction to the Scottish Index of Multiple Deprivation (SIMD) 2016 and a guidance on its usage
- Overall SIMD16 findings for Aberdeenshire
- Key domain figures
- SIMD16 by main settlement
- SIMD16 by regeneration priority area

If you would like further information on this report or would like an assistance in using the SIMD data please do not hesitate to contact the Planning, Information and Delivery Team on: statistics@aberdeenshire.gov.uk

Introduction

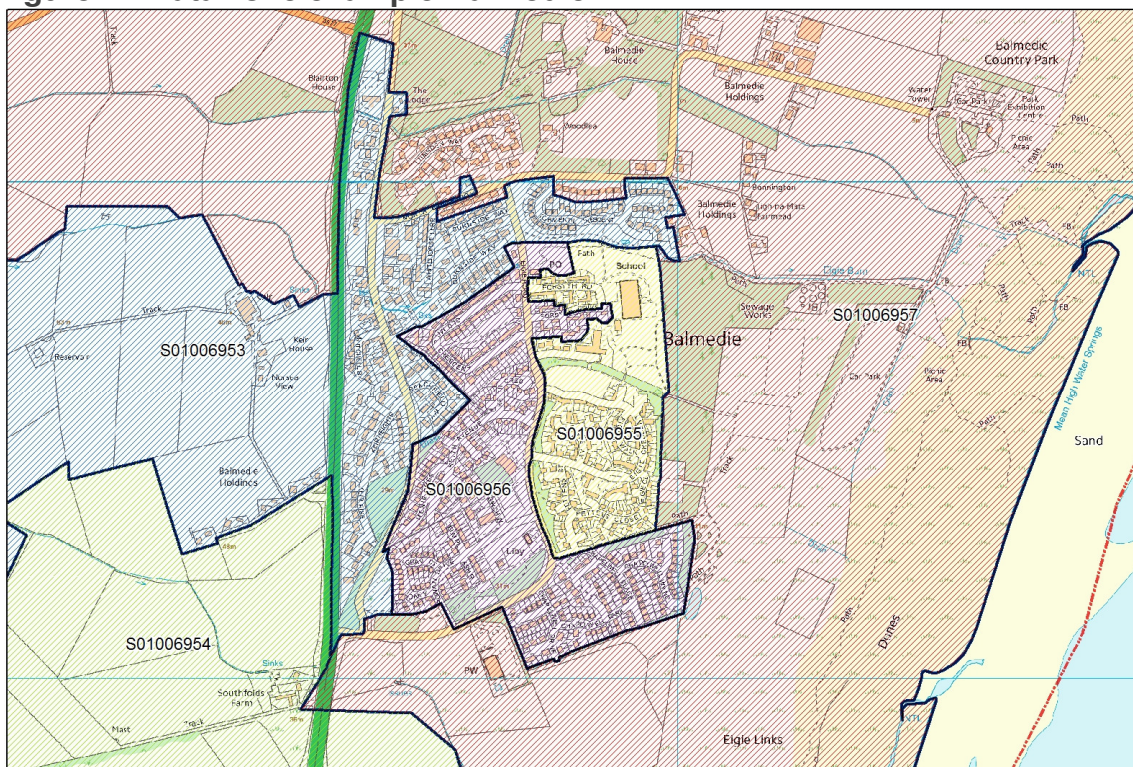
The Scottish Index of Multiple Deprivation (SIMD) is the Scottish Government's official tool for identifying areas of deprivation across Scotland. SIMD16, released August 2016, is the Scottish Government's fifth edition, since the first publication in 2004. The previous edition was released 2012.

By identifying areas of poverty and inequality SIMD highlights communities which may have more need for support. This allows for resources and policies to be targeted more effectively to those areas requiring greater intervention. Amongst other local authorities and community planning partnerships, Aberdeenshire Council and Aberdeenshire Community Planning Partnership use the SIMD to focus resources as part of their Single Outcome Agreement, as do Health Boards and other public and private organisations.

Methodology

SIMD uses data zone geographies to report on deprivation. A data zone is a small geographical area, created by the Scottish Neighbourhood Statistics (now Scottish Statistics) which collectively cover the whole of Scotland. An example of the data zone boundaries from Balmedie is shown in **figure 1**. These areas nest within local authority boundaries. Data zones encompass roughly equal populations of between 500 and 1,000 household residents and thus vary significantly in area size. Where possible they have been made to respect physical boundaries and natural communities and contain households with similar social characteristics.

Figure 1: Data zone example Balmedie



SIMD16 is based on the newest 2011 data zones, whereas all previous SIMD releases used the 2001 boundaries (including the SIMD12). For SIMD16 Scotland is divided into 6,976 data zones (previously 6,505). Data zone boundaries have changed in Aberdeenshire since SIMD12 and the number of data zones has increased from 301 to 340. Therefore, direct geographical comparisons of the SIMD16 and the previous SIMD's are not possible.

What is Deprivation?

Deprivation is not simply a measure of “poor” or “low income”. SIMD combines seven different categories, known as domains, to show concentrations of multiple deprivation:

1. Income
2. Employment
3. Health
4. Education
5. Housing
6. Geographic access to services
7. Crime

These seven domains are measured using a number of indicators which are then combined to form an overall SIMD score. These indicators are shown in **Figure 2** on page 5. The full methodology for each indicator can be found at on the [Scottish Governments SIMD16 Technical Notes](#).

Data zones are ranked for each domain from 1, being the most deprived area in Scotland, to 6,976, being the least deprived in Scotland. The impact of each domain to the overall ranking is weighted, based on how it contributes to deprivation, with employment and income weighted the most heavily. This provides a relative measure of deprivation at data zone level, and a ranking for each individual domain.

Figure 2: SIMD16 Methodology

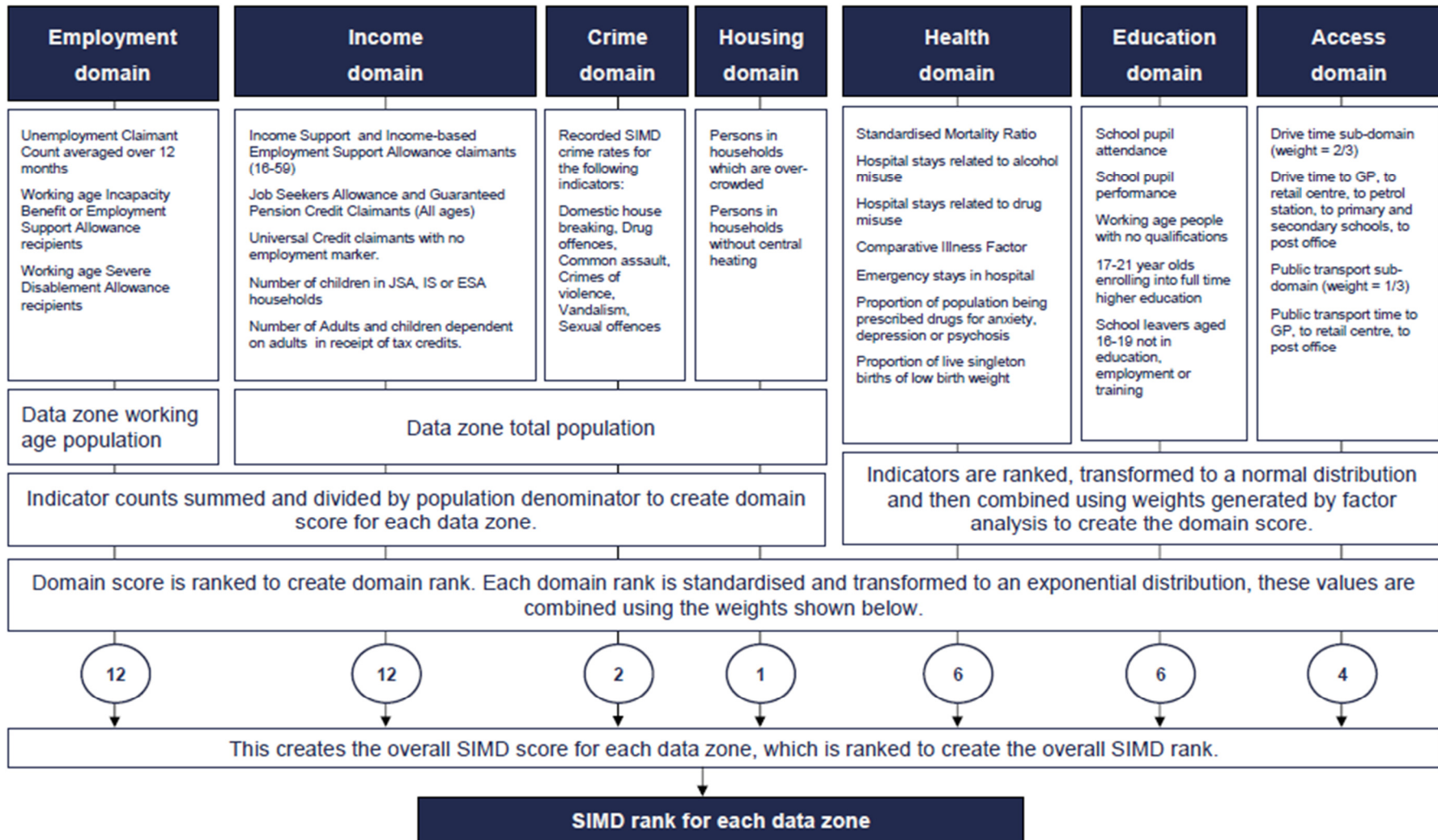


Table 1 below illustrates the relative ranking position for each of Scotland's 6,976 data zones compared to the national % level of deprivation.

Table 1: SIMD Data Zone Ranking

Scotland's most deprived:	Ranking
0% - 5%	0 - 349
6% - 10%	350 - 698
11% - 15%	699 - 1046
16% - 20%	1047 - 1395
21% - 25%	1396 - 1744
26% - 30%	1745 - 2023
31% - 35%	2024 - 2442
36% - 40%	2443 - 2790
41% - 45%	2791 - 3139
46% - 50%	3140 - 3488
51% - 55%	3489 - 3837
56% - 60%	3838 - 4186
61% - 65%	4187 - 4534
66% - 70%	4535 - 4883
71% - 75%	4884 - 5232
76% - 80%	5233 - 5581
81% - 85%	5582 - 5930
86% - 90%	5931 - 6278
91% - 95%	6279 - 6627
96% - 100%	6628 - 6976

Most Deprived
20% in Scotland

Least Deprived
20% in Scotland

Data zones are described in terms of either most or least deprived. So for example data zone S01006892 in Kemnay, with an overall ranking of 3204, could be described as being in the 50% most deprived in Scotland or 55% least deprived in Scotland.

The methodology used to construct the SIMD 2016 remains fundamentally the same as that used to construct the previous four versions in 2012, 2009, 2006 and 2004, with some minor alterations to the indicators and weightings. Full details on the domain indicators and changes in the methodology since the 2012 release are available in the supporting Technical Summary Report.

Time Comparisons

It is important to note that SIMD is not recommended for use in comparing ranks over time. SIMD can only be used to show an area's deprivation level in relation to other data zones. Therefore a change in ranking from previous data releases does not necessarily indicate an actual material change to the area, only its relative position. This report is intended to provide a snapshot of the present situation and therefore does not reference the SIMD2012 data beyond the initial overview.

Aberdeenshire Overview

In Aberdeenshire for the 2016 SIMD release there are six data zones ranked in the 20% most deprived in Scotland, representing 0.4% of the national share.

Table 2 below illustrates the national share of data zones (DZs) in the 20% most deprived overall for Scotland's 32 local authority areas.

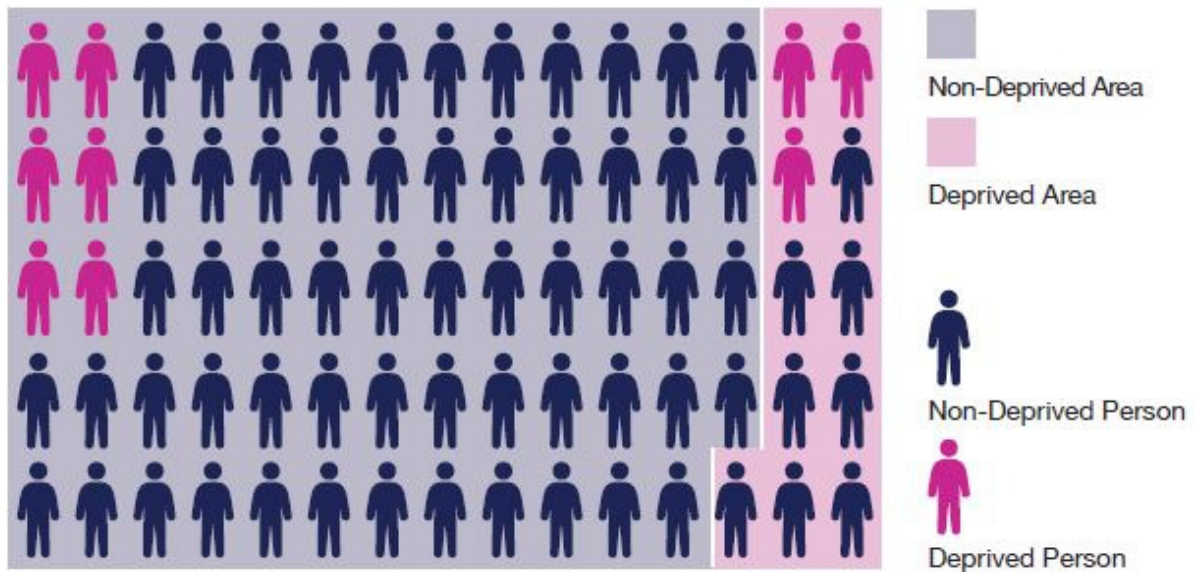
Table 2: Local Authority Share of Scottish Deprivation

Local Authority	20% Most Deprived Data Zones			
	SIMD 2012		SIMD 2016	
	No. of DZs	National Share (%)	No. of DZs	National Share (%)
Eilean Siar	0	0	0	0.0
Orkney Islands	0	0	0	0.0
Shetland Islands	0	0	0	0.0
Moray	2	0.2	1	0.1
Aberdeenshire	5*	0.4	6**	0.4
East Dumbartonshire	4	0.3	6	0.4
East Lothian	6	0.5	6	0.4
Scottish Borders	7	0.5	8	0.6
East Renfrewshire	9	0.7	8	0.6
Angus	9	0.7	11	0.8
Argyll and Bute	11	0.8	11	0.8
Perth and Kinross	11	0.8	11	0.8
Midlothian	8	0.6	13	0.9
Stirling	11	0.8	14	1.0
Dumfries and Galloway	16	1.2	17	1.2
Clackmannanshire	18	1.4	17	1.2
Aberdeen City	35	2.7	22	1.6
Highland	25	1.9	24	1.7
South Ayrshire	23	1.8	28	2.0
Falkirk	29	2.2	33	2.4
West Lothian	34	2.6	38	2.7
West Dumbartonshire	41	3.2	48	3.4
Inverclyde	50	3.8	50	3.6
East Ayrshire	48	3.7	53	3.8
Renfrewshire	60	4.6	61	4.4
Dundee City	69	5.3	69	4.9
North Ayrshire	62	4.8	70	5.0
Edinburgh, City of	67	5.1	82	5.9
South Lanarkshire	76	5.8	89	6.4
Fife	87	6.7	95	6.8
North Lanarkshire	137	10.5	144	10.3
Glasgow City	341	26.2	360	25.8
Scotland	1,301	100	1,395	100

**(out of 301) **(out of 340)*

While SIMD is a robust measure of concentrations of deprivation it is not correct to assert that deprivation is solely limited to those individuals living in a “deprived” data zone. Nor is it correct to state that everyone who resides in a “deprived” area are necessarily deprived themselves. 92% of Aberdeenshire’s population who are described as “employment” or “income” deprived do not live within the 20% most overall deprived areas. **Figure 3** illustrates that SIMD identifies areas of deprivation, not people.

Figure 3: Deprived People



Note: This example is for Scotland overall. Deprivation is measured here as the 15% most income deprived

Source: Introducing SIMD 2016, Scottish Government

Additionally SIMD does not consider demographic data as a measure of deprivation although it does offer a breakdown of the working age population for each data zone.

Overall Ranking

Barcode charts have been created for the SIMD 16, where each data zone in the local authority area is plotted by their overall ranking position, from the most to least deprived. A high concentration of bars at the “most deprived” end of the chart indicates the authority having a higher share of deprived areas. Aberdeenshire’s barcode chart is shown below and has been compared to Aberdeen City, and other local authorities geographically similar to Aberdeenshire.

Aberdeenshire



Aberdeen City



Moray



Highlands

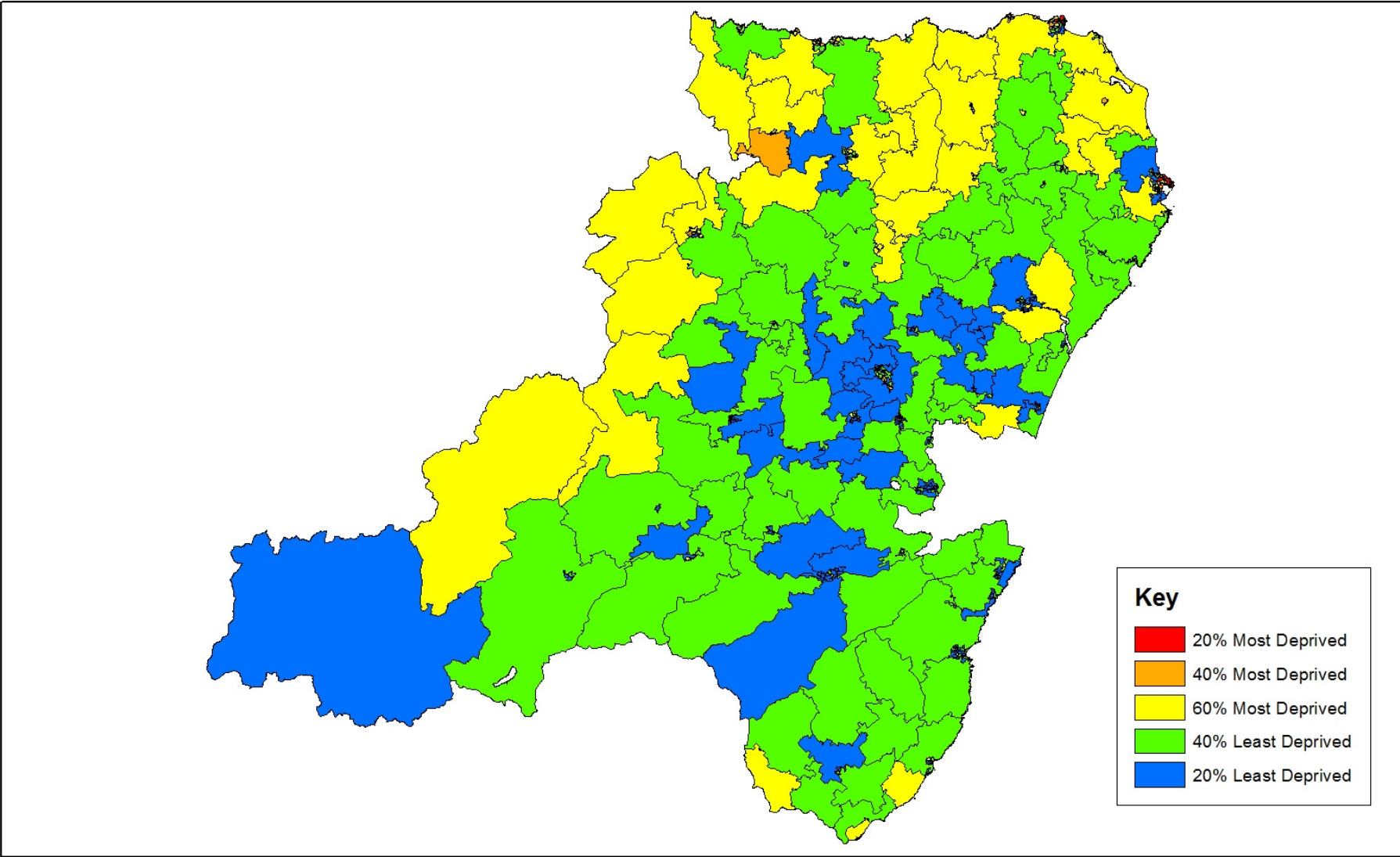


Angus



Map 1 shows the geographical distribution for the overall SIMD in Aberdeenshire. Typically (although certainly not exclusively) the majority of the more deprived data zones can be found within Aberdeenshire’s main settlements, therefore a more detailed view of these can be found in Appendix 2 (p 48).

Map 1: Aberdeenshire Distribution of Deprivation



Aberdeenshire's Most Deprived Data Zones

Table 3: Aberdeenshire Data zones ranked in the 20% most deprived in Scotland

Data Zone	Intermediate Zone	Overall SIMD16 rank	% Most Deprived in Scotland	% Most Deprived in AShire
S01007126	Fraserburgh Harbour and Broadsea	536	10%	5%
S01007086	Peterhead Harbour	754	15%	
S01007088	Peterhead Harbour	884		
S01007127	Fraserburgh Harbour and Broadsea	1078	20%	
S01007087	Peterhead Harbour	1217		
S01007083	Peterhead Harbour	1390		

The most deprived data zone in Aberdeenshire is S01007126 (Fraserburgh Harbour and Broadsea - 02) with a rank of 536. This data zone falls in the 10% most deprived in Scotland band. This is followed by data zones S01007086 (Peterhead Harbour - 06) and S01007088 (Peterhead Harbour - 08) ranked 754 and 884, both in the 11 – 15% most deprived band.

Key Facts about the 6 Most Deprived Data zones in Aberdeenshire:

- 2.1% (5,425) of Aberdeenshire's population reside in these 6 zones
- Residents are 7 times more likely to be employment deprived compared to the average for Aberdeenshire
- 20.9% of the local population are income deprived
- 5 out of the 6 zones have the most severe household overcrowding problem for all data zones in Aberdeenshire ^[1]
- All 6 data zones have the lowest pupil attendance rates for school-aged pupils of all data zones in Aberdeenshire (with the exception of S01007012 in Huntly which scores similarly)
- Residents of these zones are 6 times more likely to require an overnight hospital stay for drug related misuse than the Shire average
- However 3 of the 6 data zones are in the 15% least deprived in Scotland in terms of geographical access to service

[1] "overcrowding" compares number of rooms in the house to the number of rooms which are required by the household, based on relationships and ages)

While this report tends to focus on the most deprived areas, as these are typically of greater interest in terms of policy formation and resource allocation, it is important to emphasise that for the majority of Aberdeenshire there is shown to be very few areas of concentrated deprivation. As the bar charts on page 9 illustrate while typically rural authorities have fewer deprived areas, Aberdeenshire is also shown to have a significantly higher concentration of the least deprived zones.

It should be noted however that SIMD cannot be used to show areas of affluence. It cannot be assumed that a lack of deprivation in an area denotes areas of higher household income.

Out of the 340 data zones in Aberdeenshire 25 (or 7.4%) are within the 5% least deprived zones in Scotland. This equates to 7.2% of the national share of the least deprived areas. 7.0% of Aberdeenshire's population (and 7.1% of the working population) reside in these areas. Of these 25 data zones, 5 are in Westhill, 5 are in Ellon, 4 in Banchory, 3 Stonehaven, 1 each in Kemnay, Kintore, Inverurie and Portlethen and 4 from the rural areas of Garlogie & Elrick, Crathes & Torphins and Barrahill.

35.6% of Aberdeenshire's data zones (121) fall in the 20% overall least deprived in Scotland, equating to 8.7% of the national share. 36.1% of the Aberdeenshire's population, and 36.5% of the working population reside in these areas.

Data zone S01006935 in the Westhill Central area is Aberdeenshire's least deprived data zone, ranked 6964 out of a national total of 6976. The least deprived data zones in Aberdeenshire are shown in **Table 4**.

Table 4: Aberdeenshire Data zones ranked in the 5% least deprived in Scotland

Data Zone	Intermediate Zone	Overall SIMD16 rank	% Least Deprived in Scotland	% Least Deprived in Ashire
S01006960	Ellon East	6641	5%	10%
S01006859	Banchory East	6660		
S01006962	Ellon East	6680		
S01006958	Ellon East	6685		
S01006985	Barrhill	6694		
S01006943	Garlogie and Elrick	6713		
S01006921	Kintore	6734		
S01006970	Ellon West	6747		
S01006831	Stonehaven North	6765		5%
S01006967	Ellon West	6770		
S01006865	Banchory West	6782		
S01006945	Garlogie and Elrick	6816		
S01006834	Stonehaven North	6829		
S01006843	Portlethen	6845		
S01006890	Kemnay	6852		
S01006940	Westhill Central	6867		
S01006899	Inverurie North	6871		
S01006867	Banchory West	6878		
S01006870	Crathes and Torphins	6888		
S01006939	Westhill Central	6914		
S01006866	Banchory West	6933		
S01006930	Westhill North and South	6942		
S01006933	Westhill North and South	6945		
S01006833	Stonehaven North	6957		
S01006935	Westhill Central	6964		

Domain Analysis

As previously stated the overall SIMD ranking consists of 7 domains. The following section examines these domains individually and provides details on the lowest and highest ranking data zones in Aberdeenshire for each. An explanation of the indicators that make up each domain are also provided.

SIMD 2016: Income Domain

Indicators:

- Income Support (IS) and income-based Employment Support Allowance (ESA) claimants (aged 16-59)
- Job Seekers Allowance (JSA) and Guaranteed Pension Credit Claimants (all ages)
- Universal credit claimants with no employment marker
- Number of children in JSA, IS or ESA households
- Number of adults and children dependent on adults in receipt of tax credits

Table 5: Aberdeenshire 2016 occurrences in Scotland's 20% Most Income Deprived Data Zones

Data zone	Intermediate Zone	2016 Rank
S01007126	Fraserburgh Harbour and Broadsea - 02	824
S01007086	Peterhead Harbour - 06	1,013
S01007088	Peterhead Harbour - 08	1,302

Aberdeenshire has three data zones in the 20% most income deprived zones in Scotland. Two of these fall in the 15% most deprived S01007126 (Fraserburgh Harbour and Broadsea - 02) and S01007086 (Peterhead Harbour - 06). The third data zone S01007088 (Peterhead Harbour - 08) is in the 20% most deprived. These are the same three data zones that are the most overall deprived.

5.7% of Aberdeenshire's population (14,490 residents) have been identified as income deprived. Only 4.2% of these individuals live in the three most income deprived data zones, although they represent 23.8% of the local population.

Aberdeenshire has fifty-three data zones in the 5% least income deprived in Scotland in the SIMD16 and 47% of Aberdeenshire is in the 20% least income deprived. Of the 20% least deprived data zones for this domain only 2.2% of the population living there are income deprived

SIMD 2016: Employment Domain

Indicators:

- Unemployment Claimant Count average over 12 months
- Working age Incapacity Benefits
- Working age Severe Disablement Allowance recipients

Table 6: Aberdeenshire 2016 occurrences in Scotland's 20% Most Employment Deprived Data Zones

Data zone	Intermediate Zone	2016 Rank
S01007126	Fraserburgh Harbour and Broadsea - 02	786
S01007086	Peterhead Harbour - 06	1,083
S01007083	Peterhead Harbour - 03	1,385

Aberdeenshire has three data zones in the 20% most employment deprived in Scotland. One is in the 15% most deprived S01007126 (Fraserburgh Harbour and Broadsea - 02), two are in the 20% band S01007086 (Peterhead Harbour - 06) and S01007083 (Peterhead Harbour - 03).

13.2% of the local population of these three zones are classed as employment deprived.

Over half of Aberdeenshire's data zones (170) are in the 20% least employment deprived in Scotland. Only 1.4% of the population of these data zones are classed as employment deprived.

Almost 20% of Aberdeenshire data zones are in the 5% least employment deprived.

SIMD 2016: Health Domain

Indicators:

- Standard mortality ratio (ratio of deaths compared to Scottish average)
- Hospital stays related to alcohol misuse
- Hospital stays related to drug misuse
- Comparative Illness Factor (combined count of the total number of people receiving one or more of Disabled Living Allowance, Attendance Allowance, Incapacity Benefits, Employment Support Allowance and Severe Disablement Allowance)
- Emergency stays in hospital
- Proportion of population being prescribed drugs of anxiety, depression or psychosis
- Proportion of live singleton births at low birth rates (under 2.5kg/ 5.5lb)

Table 7: Aberdeenshire 2016 occurrences in Scotland's 20% Most Health Deprived Data Zones

Data zone	Intermediate Zone	2016 Rank
S01007126	Fraserburgh Harbour and Broadsea - 02	572

Aberdeenshire has one data zone, S01007126 (Fraserburgh Harbour and Broadsea - 02), in the 20% most health deprived data zones in Scotland.

While ranking in the 35% least deprived data zones in Scotland for health overall, residents of data zone S01007123 (Fraserburgh Central – Academy) are almost four and half times more likely to require an overnight stay in hospital for drug-related misuse than the national average.

Life expectancy is also calculated, using a standardised mortality ratio which measures the number of observed deaths from 2011- 2014, compared to the expected number observed nationally. In Aberdeenshire the lowest scoring data zone was S01007087 (Peterhead Harbour) and S01007126 (Fraserburgh Harbour and Broadsea) both of which are ranked in the 20% most deprived data zones overall in Scotland. Both zones observed doubled the number of expected deaths.

The Health domain also considers the indicator data “low birth weights (under 2.5 kg/ 5.5lb) of all singleton births” for the period 2011 - 2014. Data zone S01006831 (Stonehaven North) scores most poorly with 43% of births recorded considered underweight. This was the third lowest scoring data zone in Scotland for this indicator.

49% of Aberdeenshire data zones (168) are in the 20% least health deprived in Scotland.

SIMD 2016: Education, Skills and Training Domain

Indicators:

- School pupil attendance
- School pupil performance (average highest level of qualification of pupils)
- Working age people with no qualification
- 17-21 year olds enrolling into full time higher education
- School leavers aged 16-19 not in education, employment or training

Table 8: Aberdeenshire 2016 occurrences in Scotland's 20% Most Education Deprived Data Zones

Data zone	Intermediate Zone	2016 Rank
S01007088	Peterhead Harbour - 08	51
S01007126	Fraserburgh Harbour and Broadsea - 02	81
S01007127	Fraserburgh Harbour and Broadsea - 03	132
S01007086	Peterhead Harbour - 06	141
S01007087	Peterhead Harbour - 07	160
S01007081	Peterhead Harbour - 01	235
S01007082	Peterhead Harbour - 02	282
S01007120	Fraserburgh Lochpots - 03	339
S01007119	Fraserburgh Lochpots - 02	575
S01007035	Banff - 04	690
S01007074	Peterhead Links - 03	773
S01007012	Huntly - 05	777
S01007075	Peterhead Links - 04	791
S01007121	Fraserburgh Central-Academy - 01	828
S01007125	Fraserburgh Harbour and Broadsea - 04	879
S01007080	Peterhead Bay - 03	892
S01007118	Fraserburgh Lochpots - 01	983
S01007083	Peterhead Harbour - 03	1,014
S01007078	Peterhead Bay - 01	1,201
S01007101	Longside and Rattray - 07	1,217
S01007092	Peterhead Ugieside - 04	1,382
S01007128	Fraserburgh Harbour and Broadsea - 04	1,393

Aberdeenshire has twenty-two data zones in the 20% most educationally deprived areas in Scotland, and eight of these fall in the top 5% most educationally deprived (found in Peterhead and Fraserburgh).

There are eighty-eight in the 20% least deprived and fourteen of these fall into the 5% least deprived.

Of the 20% most educationally deprived zones in Aberdeenshire, the population is over twice as likely to have no qualifications compared to the Shire average, and over four times as likely compared to the eighty-eight zones in Aberdeenshire which are in the 20% least educationally deprived in Scotland.

Furthermore in the most educationally deprived areas on average 10% of the population aged between 16 and 19 can be described as NEETs (Not in Education, Employment of Training). This compares to the Shire average of 3% of the population and an average of only 1.2% in the least educationally deprived zones.

Similarly, in the most deprived 20% only on average 2% of the population aged between 17 and 21 will enter full-time higher education, compared to 8% across the Shire and 13% in the least educationally deprived zones.

Finally, average attendance rates for pupils in the most deprived zones are 70%, with the lowest zone (S01007086 in Peterhead Harbour) scoring an average attendance rate of 56%. This compares to the Shire average of 87% and 93% in the least educationally deprived areas.

SIMD 2016: Housing Domain

Indicators:

- Persons in households which are over-crowded (compares number of rooms in the house to the number of rooms which are required by the household, based on relationships and ages)
- Persons in households without central heating

Table 9: Aberdeenshire 2016 occurrences in Scotland's 20% Most Housing Deprived Data Zones

Data zone	Intermediate Zone	2016 Rank
S01007127	Fraserburgh Harbour and Broadsea - 03	298
S01007087	Peterhead Harbour - 07	469
S01007086	Peterhead Harbour - 06	553
S01007126	Fraserburgh Harbour and Broadsea - 02	926
S01007088	Peterhead Harbour - 08	960
S01007082	Peterhead Harbour - 02	1,090
S01007118	Fraserburgh Lochpots - 01	1,231

There are seven data zones in Aberdeenshire within the 20% most housing deprived in Scotland. One data zone, S01007127 (Fraserburgh Harbour and Broadsea - 03), is in the 5% most housing deprived. The other six are all within Peterhead and Fraserburgh.

Approximately 14,840 (5.7%) of Aberdeenshire residents live in overcrowded conditions. 8.7% of these people reside in the 20% most housing deprived areas. Six of the seven worst scoring zones for housing in Aberdeenshire have an overcrowding rate of over 20%.

Over a third of Aberdeenshire's data zones (112) are in the 20% least housing deprived in Scotland. Data zone S01006829 (Stonehaven South – 07) is one of a shared rank of the least housing deprived data zones in Scotland.

SIMD 2016: Geographical Access Domain

Indicators:

- Average drive time to:
 - GPs
 - Retail centre
 - Primary school and Secondary school
 - Post office
- Average public transport journey time to:
 - GP
 - Retail centre
 - Post office

Unlike the six other domains where the majority of Aberdeenshire scores relatively well compared to the national average, in regards to the geographical access domain there is a significantly higher portion of deprived data zones in Aberdeenshire, a reflection of the rural make-up of the authority. For the full list of most deprived data zones please see Appendix 1 (p. 35). **Map 2** shows the distribution of access deprivation across Aberdeenshire.

This domain calculates the average drive time to key services and the average time taken by public transport from specific points within each data zone. These points are “Census Output Area centroids”, which is a postcode grid reference that is nearest the average, weighted by the household count, of all the postcode grid references for that area (i.e. the central point for the highest cluster of households).

149 (44%) of Aberdeenshire’s data zones are ranked within the 20% most deprived in Scotland for service access, which equals 10.7% of the national share. 117,906 of Aberdeenshire’s residents, or 45.3%, live in a geographical deprived area.

Furthermore fifty-eight of Aberdeenshire’s data zones are in the 5% most deprived for this domain, which equals 15.0% of the national share, and includes 16.0% of the Shire’s population.

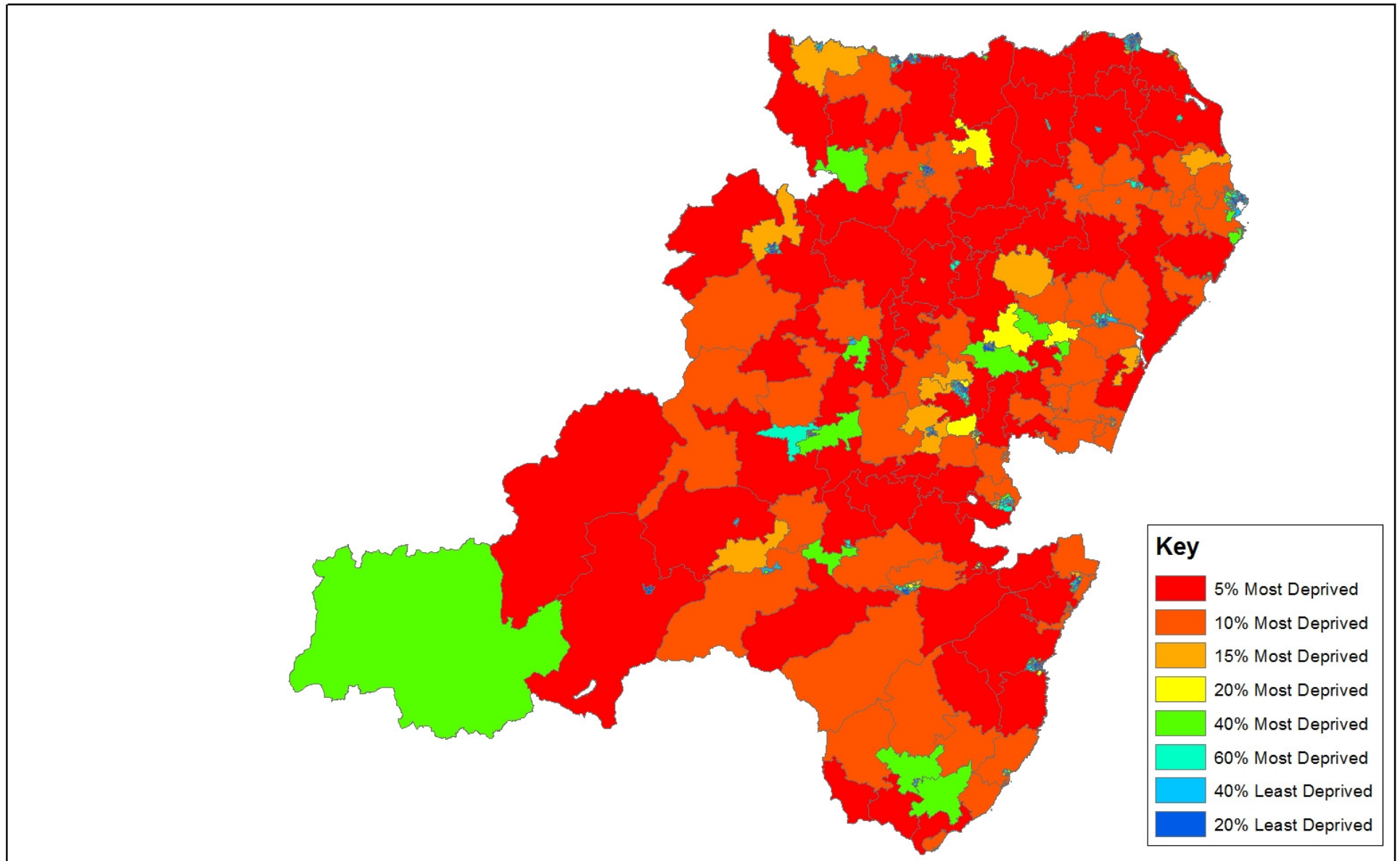
These geographical deprived data zones are not concentrated in any one area of Aberdeenshire, although typically are within the rural, rather than urban areas. The overall lowest scoring data zone for the geographical access domain is S01007046, in New Pitsligo, which was ranked 52 out of the 6,976 across Scotland. The highest recorded journey time by public transport was recorded in the Cairngorms intermediate area with an average travel time of over an hour to the nearest retail centre.

This considerable level of geographical deprivation, coupled with the declining rural facilities available, demonstrates a significant challenge facing rural communities.

Rural services available are monitored annually by Aberdeenshire Council's Planning, Information and Delivery Team and are published in the [Rural Facilities Monitor](#) report.

Additionally there are forty six data zones in the 20% least deprived in Scotland for geographical access; including a number in Peterhead and Fraserburgh, which equals 3.3% of the national share.

Map 2: Geographical Access to Services Deprivation



SIMD 2016: Crime Domain

Indicators:

- Recorded SIMD crime rates for the following:
 - Domestic house breaking
 - Drugs offences
 - Common assault
 - Crime of violence
 - Vandalism
 - Sexual offences

Note: “Crime Deprivation” suggests a higher level of recorded crime occurring there

Table 10: Aberdeenshire 2016 occurrences in Scotland’s 20% Most Crime Deprived Data Zones

Data zone	Intermediate Zone	2016 Rank
S01007086	Peterhead Harbour - 06	35
S01007127	Fraserburgh Harbour and Broadsea - 03	72
S01006907	Inverurie South - 06	264
S01007085	Peterhead Harbour - 05	330
S01007087	Peterhead Harbour - 07	473
S01007126	Fraserburgh Harbour and Broadsea - 02	500
S01007121	Fraserburgh Central-Academy - 01	586
S01007032	Banff - 01	673
S01006835	Stonehaven North - 06	743
S01007122	Fraserburgh Central-Academy - 02	801
S01006959	Ellon East - 02	867
S01006908	Inverurie South - 07	876
S01007128	Fraserburgh Harbour and Broadsea - 04	913
S01007088	Peterhead Harbour - 08	978
S01007080	Peterhead Bay - 03	1,006
S01007079	Peterhead Bay - 02	1,085
S01007083	Peterhead Harbour - 03	1,132
S01007073	Peterhead Links - 02	1,178

Eighteen of Aberdeenshire’s data zones are in the 20% most deprived in Scotland in terms of having higher levels of crime recorded to have occurred there. Four of these are in the 5% most deprived.

The most deprived data zone for this measure is S01007086 (Peterhead Harbour - 06), with a rank of 35, where there was a rate of 2296 recorded crimes of violence, sexual offences, domestic housebreaking, vandalism, drugs offences, and common assault per 10,000 people.

This is followed by data zones S01007127 (Fraserburgh Harbour and Broadsea – 03), S01006907 (Inverurie South – 06) and S01007085 (Peterhead Harbour – 05). Thirteen of the eighteen data zones in the 20% most deprived (in terms of high crime rates) are in Peterhead and Fraserburgh (eight data zones and five zones respectively).

However, unlike some of the other domains where the deprivation is concentrated in Fraserburgh and Peterhead, with the crime domain there are other areas of relative deprivation in the 20% most crime deprived areas, e.g. Inverurie, Banff and Ellon.

There are thirty four Aberdeenshire data zones in the 5% least deprived in Scotland and 40% of Aberdeenshire's data zones (140) are in the 20% least crime deprived. Forty-five data zones in Aberdeenshire did not have any crime recorded there for the observed period.

Settlement Profiles

The following section provides more detail on the main settlements in Aberdeenshire (those with a population over 3,000) by administration area. Each settlement has been mapped showing the boundary as outlined in Aberdeenshire’s current Local Development Plan and the surrounding data zones. Where the two geographical areas do not nest into one another the report uses a “best fit” to estimate the settlement.

The corresponding maps, showing the national share of deprivation, can be found in Appendix 2 starting on page 38.

The analysis will explore the national deprivation but also how the areas compare locally within Aberdeenshire (i.e ranking only the 340 Aberdeenshire data zones).

Table 11: National and local data zone ranking

Deprivation Level	National data zone ranking		Aberdeenshire data zone ranking	
	From	To	From	To
0% - 5%	0	349	0	17
6% - 10%	350	698	18	34
11% - 15%	699	1046	35	51
16% - 20%	1047	1395	52	68
21% - 25%	1396	1744	69	85
26% - 30%	1745	2023	86	102
31% - 35%	2024	2442	103	119
36% - 40%	2443	2790	120	136
41% - 45%	2791	3139	137	153
46% - 50%	3140	3488	154	170
51% - 55%	3489	3837	171	187
56% - 60%	3838	4186	188	204
61% - 65%	4187	4534	205	221
66% - 70%	4535	4883	222	238
71% - 75%	4884	5232	239	255
76% - 80%	5233	5581	256	272
81% - 85%	5582	5930	273	289
86% - 90%	5931	6278	290	306
91% - 95%	6279	6627	307	323
96% - 100%	6628	6976	324	340

Banff and Buchan

Banff & Macduff

There are ten data zones that form the Banff and Macduff intermediate areas. Two zones are in the most deprived 40% of Scotland, seven in the most deprived 60% and one in the least deprived 40%. However, looking at the 340 zones in Aberdeenshire in isolation, seven out of the ten zones are in the 20% most deprived locally. The area scores low locally in terms of income, with eight zones in the 15% most deprived in Aberdeenshire, and employment, with seven zones are in the 15% most deprived in Aberdeenshire.

Excluding the geographical access no data zone, other than S01007036, scores above the 45% most deprived in Aberdeenshire across any domain.

11.6% of the population in Banff and Macduff could be described as income deprived, and 6.5% of employment deprived. This compares to the Shire average of 5.7% income deprivation and 3.0% employment deprivation.

Fraserburgh

Fraserburgh is a settlement of mixed rankings. The town consists of seventeen data zones. Nationally two data zones are in the most deprived 20% and three are in the least deprived 20%.

Ten zones are in the overall most deprived 15% for Aberdeenshire. Seven zones score in the most deprived 5% locally for income, education and health domains, six for housing and five for the most deprived 5% in terms of employment and crime. However one zone (S01007116) scores in the 5% least deprived in Aberdeenshire in terms of income, employment, health, housing and crime.

11.8% of the population in Fraserburgh is income deprived and 6.3% in employment deprived.

Buchan

Peterhead

There are twenty-three data zones that form Peterhead. For overall deprivation four zones are ranked in the most deprived 20% in Scotland, with four in the 20% least deprived in Scotland.

Half of the settlement (twelve zones) are ranked overall in the 10% most deprived areas in Aberdeenshire with six in the most deprived 5% in Aberdeenshire.

The area scores the poorest in terms of health and education. For the health domain ten zones are in the 10% most locally with residents of Peterhead twice as likely to require an overnight stay in hospital for both alcohol and drug related incidents compared to the Shire average.

For the education domain, fifteen zones are in the 10% most deprived locally. 7% of the Peterhead's population aged 16-19 can be described as a NEET, compared to the Shire average of 3%, whereas on average 3% of Peterhead's 17-21 year olds will enter full-time further education (compared to 8% across the Shire).

However the area scores well in terms of access to services where the average journey times are significantly under the Shire average to all key services.

11.1% of the population of Peterhead can be described as income deprived and 5.8% as employment deprived.

Formartine

Ellon

There are fourteen data zones in Ellon, none of which are ranked below the 50% most overall deprived areas in Scotland. Five zones are ranked in the 5% least deprived across Scotland.

Locally, one zone (S01006959), is ranked within the 20% most overall deprived in Aberdeenshire. This zone is also ranked in the 10% most income deprived zones and 5% most deprived for the crime domain in Aberdeenshire.

4.3% of the population of Ellon can be described as income deprived and 2.2% as employment deprived.

Oldmeldrum

There are only three data zones that form the majority of Oldmeldrum (S01006988 has been excluded as it mainly covers the large surrounding rural area). All three zones are in the 25% least deprived in Scotland, with one zone (S01006985), in the 5% least deprived in Scotland.

The settlement typically scores in the 50% least deprived in Aberdeenshire across the individual domains. However S01006987 scores in the 15% most deprived in Aberdeenshire for education while all three zones are in the 35% most deprived in Aberdeenshire in regards to crime.

2.9% of the population of Oldmeldrum can be described as income deprived and 1.5% of employment deprived.

Turriff

Turriff is formed from six data zones. One zone (S01007017) falls under the 50% most deprived areas overall in Scotland, while S01007022 is in 10% least deprived areas overall in Scotland.

Two zones (S01007019 and S01007017) fall in to the 20% most deprived areas overall in Aberdeenshire. These zones rank in the 20% most deprived locally for income, employment, health and education.

7.8% of the population of Turriff can be described as income deprived and 3.5% of employment deprived.

Garioch

Inverurie

There are fifteen data zones that form Inverurie. The two lowest ranking zones (S01006906 and S01006903) score in the 40% most deprived areas overall in Scotland, with the highest ranking zone (S01006899) in the 5% least deprived overall in Scotland.

Locally, zones S01006906 and S01006903 fall into the 10% most deprived in Aberdeenshire. These zones are also ranked in the 5% most deprived in Aberdeenshire for employment.

6.1% of the population of Inverurie can be described as income deprived and 3.6% of employment deprived.

Kemnay

There are five data zones that make up the town Kemnay. The lowest ranking zone for overall deprivation is S01006889 which falls in the 45% most deprived in Scotland. Zone S01006890 is the highest ranking zone in Kemnay and falls into the 5% least deprived in Scotland.

Zone S01006890 consistently ranks highly both nationally and locally across all domains with the exception of the crime domain where it scores in the 30% least deprived in Aberdeenshire.

7.3% of the population of Kemnay can be described as income deprived and 3.0% of the population as employment deprived.

Kintore

There are six data zones that form Kintore, all of which are ranked in the 25% least deprived in Scotland, with one scoring in the 5% least deprived in Scotland. Locally zone S01006920 is the lowest ranking data zone, falling in the 55% most overall deprived area in Aberdeenshire.

Generally the settlement ranks highly within Aberdeenshire in terms of income, employment, health and housing although zone S01006919 scores in the 15% most deprived areas locally for housing and S01006920 in the 10% most deprived areas locally for crime.

1.9% of the population can be described as income deprived and 1.0% as employment deprived.

Westhill

Westhill consists for fifteen data zones (this includes the Garlogie and Elrick area which are within the LDP settlement boundary area) all of which rank in the 25% least deprived in Scotland. There are eleven zones in the 10% least deprived in Scotland, with seven of these in the 5% least deprived in Scotland.

S01006942 is the lowest ranking data zone for overall deprivation within Westhill and falls into the 45% least deprived areas of Aberdeenshire. Fourteen of the fifteen Westhill data zones are ranked in the 20% least deprived overall for Aberdeenshire.

The area generally ranks high locally and nationally for the income, employment, health and education domains.

The area performs less well in regards to access, with zone S01006932 ranking in the 10% most deprived areas nationally for access, mainly due to the average public transport times to key services.

2.3% of the population of Westhill can be described as income deprived and 1.3% as employment deprived.

Kincardine and Mearns

Newtonhill

There are only three data zones that form Newtonhill, all of which are in the 35% least deprived areas in Scotland.

S01006839 ranks in the 45% most deprived areas of Aberdeenshire and ranks lower locally in terms of health (most deprived 45%), and education (most deprived 35%), than the other two zones. S01006840 ranks in the 5% least deprived in Scotland and Aberdeenshire for income, employment and housing. All three zones are ranked in the 15% most deprived areas nationally for the access domain.

2.1% of the population of Newtonhill can be described as income deprived and 1.5% of employment deprived.

Portlethen

Portlethen consists of nine data zones. All Portlethen's data zones rank in the 40% least deprived in Scotland with four of the nine zones in the 10% least deprived in Scotland.

Locally, zone S0100650 and S01006851 fall into the 30% and 35% most deprived areas in Aberdeenshire respectively, while zones S01006842, S01006843, S01006844 and S01006845 all fall into the 10% least deprived areas in Aberdeenshire.

However, for education, zone S01006846 ranks in the 20% most deprived areas locally, and for housing deprivation S01006844 scores in the 15% most deprived locally.

3.2% of the population of Portlethen can be described as income deprived and 1.9% as employment deprived.

Stonehaven

There are sixteen data zones that make up the settlement of Stonehaven. One zone (S01006824) ranks in the 45% most deprived areas in Scotland. There are eight data zones in the 10% least deprived areas in Scotland. Locally data zone S01006824 falls into the most overall deprived 15% in Aberdeenshire and the 10% most income and employment deprived in Aberdeenshire.

Four data zones rank in the 10% least deprived in Aberdeenshire.

4.8% of the population in Stonehaven can be described as income deprived and 2.9% as employment deprived.

Marr

Banchory

There are ten data zones that form the settlement of Banchory. The lowest ranking data zone is in the 45% least deprived overall areas of Scotland. Four data zones are in the 5% least deprived overall areas in Scotland. Data zones S01006859 and S01006866 rank in the 5% least deprived in Scotland overall and for the income, employment, housing, education and health domains.

Locally one data zone (S01006860) ranks in the 25% most deprived in Aberdeenshire. The rest are above the 50% least deprived in Aberdeenshire, with three zones in the 5% least deprived overall locally.

3.1% of the population of Banchory can be described as income deprived and 1.6% as employment deprived.

Huntly

Huntly is comprised of five data zones. One zone (S01007012) is ranked in the 30% most overall deprived in Scotland and data zone (S01007010) is ranked in the 10% least overall deprived in Scotland.

Locally four out of the five data zones in Huntly are ranked in the 30% most deprived overall areas in Aberdeenshire, with data zone S01007012 in the 5% most overall deprived areas in Aberdeenshire. The fifth zone is in the 20% least deprived.

The four lowest ranking data zones are all in the 20% most deprived areas in Aberdeenshire for income and employment, with three of these also in the 20% most deprived areas local in terms of health, education and housing.

10.9% of the population of Huntly can be described as income deprived and 5.0% as employment deprived.

Regeneration Zones Summary

Regeneration priority areas have been identified in Aberdeenshire's Local Development Plan where Aberdeenshire Council has committed to developing a strategy, alongside the relevant partners, to encourage economic growth and tackle disadvantage. These are located along the north coast in Banff and Buchan and Buchan.

Banff and Buchan

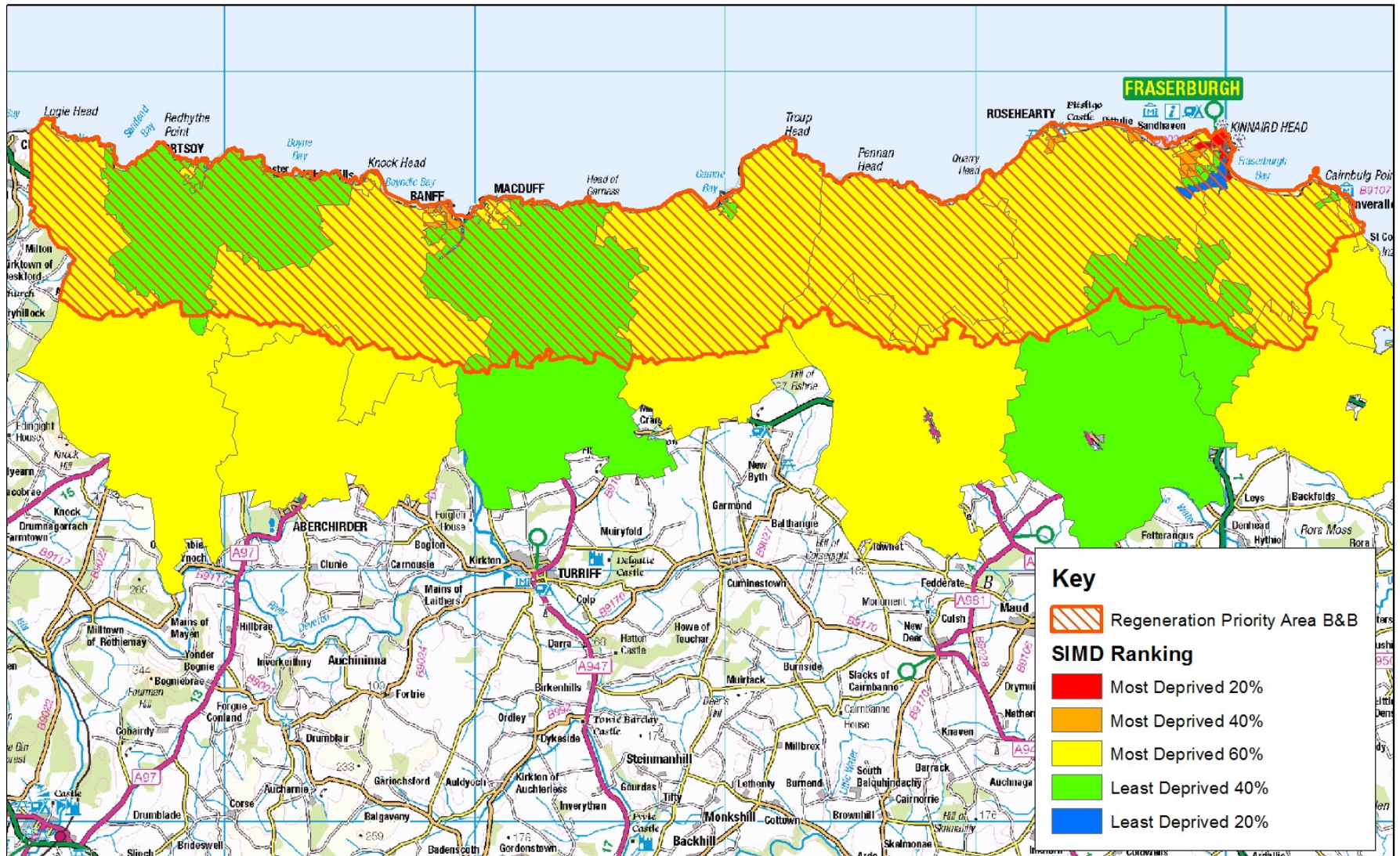
The Banff and Buchan portion of the regeneration area consists of forty complete data zones and ten partial zones. For each of the partial zones the number of properties contained within the regeneration zone has been calculated and a population estimate taken. Within the area 5.6% of the population can be identified as employment deprived, which compares to the Shire average of 3.0%.

Furthermore 10.4% of the population have been identified as income deprived, which compares to the Shire average of 5.7%.

Discarding the four data zones with less than 50% of their resident population in the regeneration zone almost 9% of the area is ranked in the 25% most deprived areas in Scotland, and 54% of the area in the 50% most deprived areas in Scotland.

Locally 17% of the regeneration zone is in the 5% most overall deprived areas in Aberdeenshire, 65% is in the most deprived 25% locally and 91% of the area in the 50% most deprived areas within Aberdeenshire.

Map 3: Banff and Buchan Regeneration Area



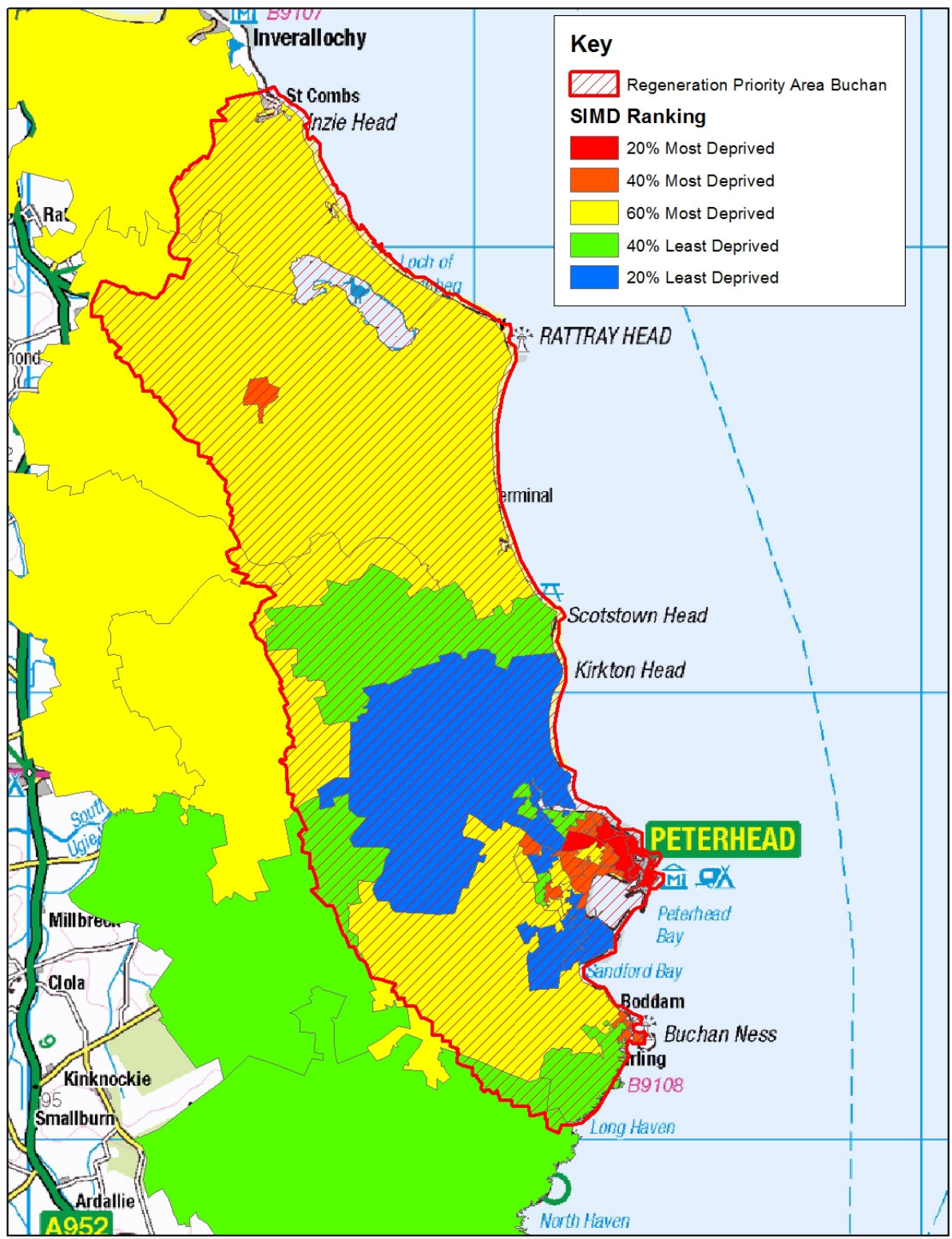
Buchan

The Buchan portion of the regeneration zone consists of twenty-eight complete data zones and seven partial zones. Within the area an estimated 5.3% of the population can be described as employment deprived, while 10.2% of the population can be classed as income deprived.

Discarding the five data zones with an estimated resident population under 50% within the regeneration zone, 7% of the area is ranked within the 15% most deprived areas in Scotland, 13% in the most deprived 20% and 47% in the most deprived 50%.

Locally 27% of the area is in the most deprived 5% of Aberdeenshire, 60% in the most deprived 20% and 80% of the area is in the most deprived overall 50% of Aberdeenshire.

Map 4: Buchan Regeneration Area



Conclusion

It is important to emphasize that for the majority of Aberdeenshire there are very few areas of multiple deprivation. Aberdeenshire only contains six data zones, out of the 340 which make up the local authority area, that are ranked in the 20% most deprived in Scotland, covering only 1.8% of the local area. This equates to a national share of 0.4% of all deprived areas, the fifth lowest of the thirty-two local authorities in Scotland (joint with East Lothian and East Dunbartonshire).

Looking at the least deprived areas, there are 121 zones in Aberdeenshire which are ranked in the 20% least deprived in Scotland, covering 40.0% of the Aberdeenshire's data zones. Aberdeenshire therefore has a national share of 8.7% of the least deprived areas, the second highest share of the thirty-two Scottish authorities after Edinburgh City.

Appendix 1

Individual domain tables of national and local share of deprivation

Table 12: Most Income Deprived Data Zones - Aberdeenshire 2016

Data Zone	Intermediate Zone	Income domain rank	% Most Deprived in Scotland	% Most Deprived in Ashire
S01007126	Fraserburgh Harbour and Broadsea	824	15%	5%
S01007086	Peterhead Harbour	1013		
S01007088	Peterhead Harbour	1302	20%	
S01007083	Peterhead Harbour	1523	25%	
S01007121	Fraserburgh Central-Academy	1541		
S01007087	Peterhead Harbour	1632		
S01007118	Fraserburgh Lochpots	1697		
S01007035	Banff	1785	30%	
S01007120	Fraserburgh Lochpots	1862		
S01007092	Peterhead Ugieside	1868		
S01007012	Huntly	1906		
S01007128	Fraserburgh Harbour and Broadsea	1946		
S01007127	Fraserburgh Harbour and Broadsea	1981		
S01007119	Fraserburgh Lochpots	2007	35%	
S01007070	Cruden	2129		
S01007060	Mintlaw	2150		
S01007101	Longside and Rattray	2227		

Table 13: Most Employment Deprived Data Zones - Aberdeenshire 2016

Data Zone	Intermediate Zone	Employment domain rank	% Most Deprived in Scotland	% Most Deprived in Ashire
S01007126	Fraserburgh Harbour and Broadsea	786	15%	5%
S01007086	Peterhead Harbour	1083	20%	
S01007083	Peterhead Harbour	1385		
S01007088	Peterhead Harbour	1467	25%	
S01007127	Fraserburgh Harbour and Broadsea	1594		
S01007032	Banff	1982	30%	
S01007121	Fraserburgh Central-Academy	2024	35%	
S01007087	Peterhead Harbour	2057		
S01007070	Cruden	2180		
S01007120	Fraserburgh Lochpots	2191		
S01007012	Huntly	2282		
S01007035	Banff	2295		
S01007128	Fraserburgh Harbour and Broadsea	2315		
S01006906	Inverurie South	2361		
S01006903	Inverurie South	2362		
S01007079	Peterhead Bay	2405		
S01007101	Longside and Rattray	2470	40%	

Table 14: Most Health Deprived Data Zones - Aberdeenshire 2016

Data Zone	Intermediate Zone	Health domain rank	% Most Deprived in Scotland	% Most Deprived in Ashire
S01007126	Fraserburgh Harbour and Broadsea	572	10%	5%
S01007088	Peterhead Harbour	1434	25%	
S01007087	Peterhead Harbour	1771	30%	
S01007083	Peterhead Harbour	1843		
S01007127	Fraserburgh Harbour and Broadsea	1847		
S01007119	Fraserburgh Lochpots	1867		
S01007086	Peterhead Harbour	1912		
S01007128	Fraserburgh Harbour and Broadsea	2028	35%	
S01007035	Banff	2328		
S01007123	Fraserburgh Central-Academy	2336		
S01007120	Fraserburgh Lochpots	2426	40%	
S01007049	New Pitsligo	2464		
S01007121	Fraserburgh Central-Academy	2523		
S01007101	Longside and Rattray	2551		
S01006906	Inverurie South	2632		
S01007011	Huntly	2639		
S01007070	Cruden	2703		

Table 15: Most Education Deprived Data Zones - Aberdeenshire 2016

Data Zone	Intermediate Zone	Education domain rank	% Most Deprived in Scotland	% Most Deprived in Ashire
S01007088	Peterhead Harbour	51	5%	5%
S01007126	Fraserburgh Harbour and Broadsea	81		
S01007127	Fraserburgh Harbour and Broadsea	132		
S01007086	Peterhead Harbour	141		
S01007087	Peterhead Harbour	160		
S01007081	Peterhead Harbour	235		
S01007082	Peterhead Harbour	282		
S01007120	Fraserburgh Lochpots	339		
S01007119	Fraserburgh Lochpots	575		
S01007035	Banff	690	15%	
S01007074	Peterhead Links	773		
S01007012	Huntly	777		
S01007075	Peterhead Links	791		
S01007121	Fraserburgh Central-Academy	828		
S01007125	Fraserburgh Harbour and Broadsea	879		
S01007080	Peterhead Bay	892		
S01007118	Fraserburgh Lochpots	983		
S01007083	Peterhead Harbour	1014		20%
S01007078	Peterhead Bay	1201		
S01007101	Longside and Rattray	1217		
S01007092	Peterhead Ugieside	1382		
S01007128	Fraserburgh Harbour and Broadsea	1393		

Table 16: Most Housing Deprived Data Zones - Aberdeenshire 2016

Data Zone	Intermediate Zone	Housing domain rank	% Most Deprived in Scotland	% Most Deprived in Ashire
S01007127	Fraserburgh Harbour and Broadsea	298	5%	5%
S01007087	Peterhead Harbour	469	10%	
S01007086	Peterhead Harbour	553		
S01007126	Fraserburgh Harbour and Broadsea	926	15%	
S01007088	Peterhead Harbour	960		
S01007082	Peterhead Harbour	1090	20%	
S01007118	Fraserburgh Lochpots	1231		
S01007081	Peterhead Harbour	1513	25%	
S01007121	Fraserburgh Central-Academy	1585		
S01007085	Peterhead Harbour	1622		
S01006889	Kemnay	1687		
S01006903	Inverurie South	1717	30%	
S01007120	Fraserburgh Lochpots	1905		
S01007119	Fraserburgh Lochpots	1925		
S01007083	Peterhead Harbour	1937		
S01007040	Macduff	1950	35%	
S01007075	Peterhead Links	2092		

Table 17: Most Geographical Access Deprived Data Zones - Aberdeenshire 2016

Data Zone	Intermediate Zone	Access domain rank	% Most Deprived in Scotland	% Most Deprived in Ashire
S01007046	New Pitsligo	52	5%	5%
S01006999	Insch, Oyne and Ythanwells	59		
S01006798	Aboyne and South Deeside	77		
S01006858	Dunecht, Durris and Drumoak	81		
S01006855	Dunecht, Durris and Drumoak	82		
S01006877	Cromar and Kildrummy	87		
S01006993	Fyvie-Rothie	92		
S01006992	Fyvie-Rothie	98		
S01007015	Auchterless and Monquhitter	100		
S01006975	Ythanside	112		
S01006791	East Cairngorms	117		
S01007007	Clashindarroch	125		
S01006819	Fetteresso, Netherley and Catter	137		
S01006853	Dunecht, Durris and Drumoak	140		
S01007062	Auchnagatt	147		
S01007056	Deer and Mormond	159		
S01006915	Durno-Chapel of Garioch	162		
S01007016	Auchterless and Monquhitter	163		
S01007045	Gardenstown and King Edward	166		
S01006792	East Cairngorms	168		
S01006818	Fetteresso, Netherley and Catter	172		
S01006949	Newmachar and Fintray	175		
S01006821	Fetteresso, Netherley and Catter	178		
S01007047	New Pitsligo	179		
S01006822	Fetteresso, Netherley and Catter	187		
S01007024	Portsoy, Fordyce and Cornhill	192		
S01007061	Auchnagatt	207		
S01006807	Mearns South and Benholm	214		
S01007029	Aberchirder and Whitehills	220		
S01007055	Deer and Mormond	222		
S01007108	Rosehearty and Strathbeg	225		
S01007104	Rosehearty and Strathbeg	228		
S01006931	Westhill North and South	238		
S01007102	Longside and Rattray	253		
S01006924	Kintore	257		
S01007048	New Pitsligo	260		
S01006950	Newmachar and Fintray	265		
S01006857	Dunecht, Durris and Drumoak	268		
S01006912	Durno-Chapel of Garioch	270		
			5%	15%

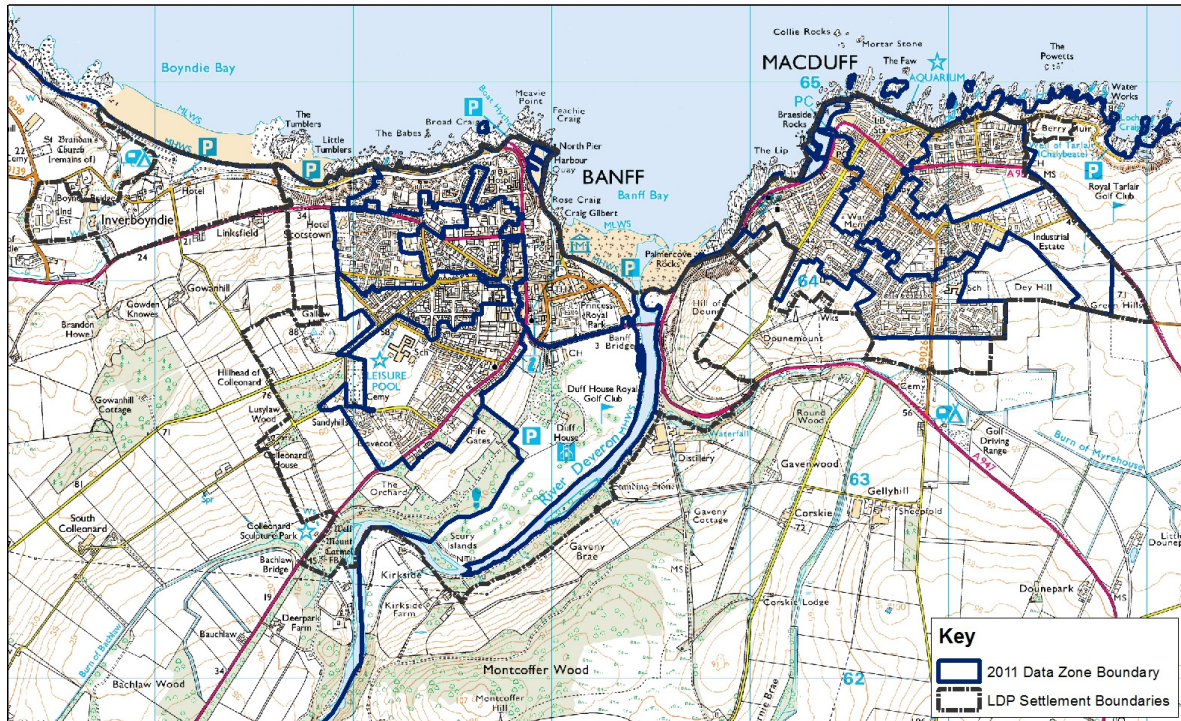
S01006879	Cromar and Kildrummy	278		
S01007043	Gardenstown and King Edward	283		
S01007004	Clashindarroch	284		
S01006856	Dunecht, Durris and Drumoak	289		
S01006997	Insch, Oyne and Ythanwells	294		
S01006994	Fyvie-Rothie	296		
S01006808	Mearns South and Benholm	298		
S01007003	Clashindarroch	301		
S01006984	Ythsie	308		
S01006881	Howe of Alford	319		
S01006972	Ythanside	322		
S01006880	Howe of Alford	323		
S01006874	Crathes and Torphins	328		20%
S01007066	Cruden	332		
S01006995	Fyvie-Rothie	337		
S01006888	Howe of Alford	338		
S01007107	Rosehearty and Strathbeg	339		
S01007095	Longside and Rattray	348		
S01006806	Mearns South and Benholm	349		

Table 18: Most Crime Deprived Data Zones - Aberdeenshire 2016

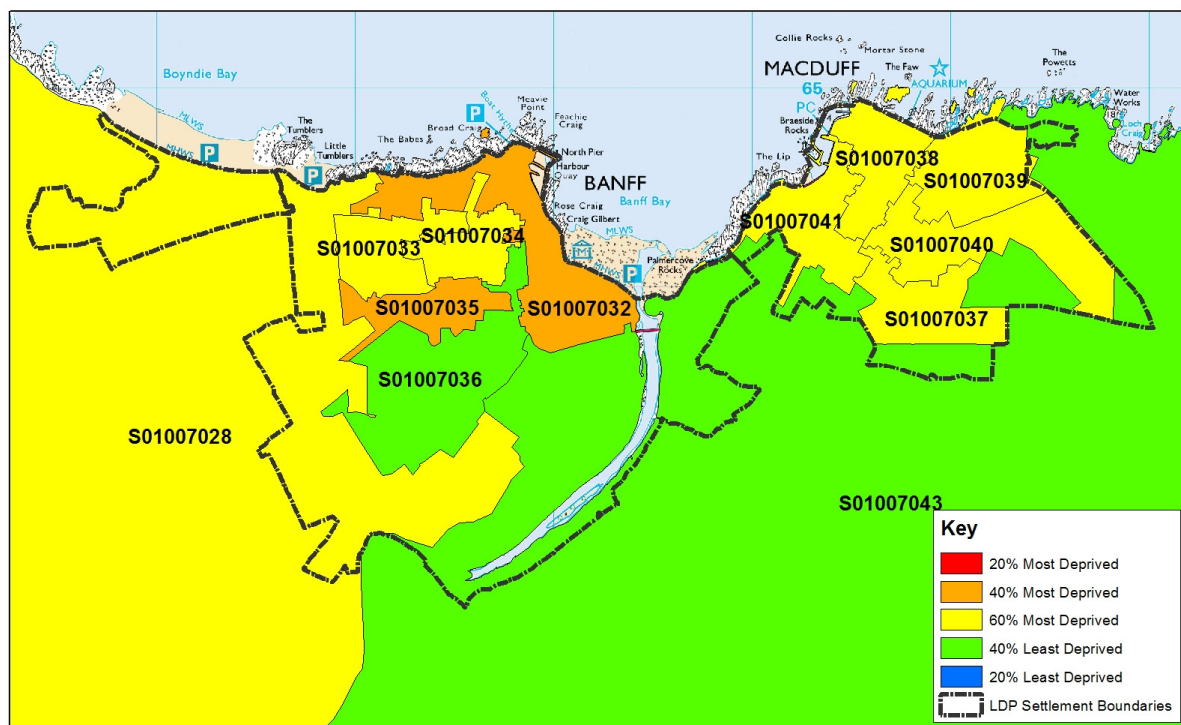
Data Zone	Intermediate Zone	Crime domain rank	% Most Deprived in Scotland	% Most Deprived in Ashire
S01007086	Peterhead Harbour	35	5%	5%
S01007127	Fraserburgh Harbour and Broadsea	72		
S01006907	Inverurie South	264		
S01007085	Peterhead Harbour	330	10%	
S01007087	Peterhead Harbour	473		
S01007126	Fraserburgh Harbour and Broadsea	500		
S01007121	Fraserburgh Central-Academy	586	15%	
S01007032	Banff	673		
S01006835	Stonehaven North	743		
S01007122	Fraserburgh Central-Academy	801		
S01006959	Ellon East	867		
S01006908	Inverurie South	876		
S01007128	Fraserburgh Harbour and Broadsea	913	20%	
S01007088	Peterhead Harbour	978		
S01007080	Peterhead Bay	1006		
S01007079	Peterhead Bay	1085		
S01007083	Peterhead Harbour	1132	20%	
S01007073	Peterhead Links	1178		10%

Appendix 2 Settlement maps of deprivation and data zones

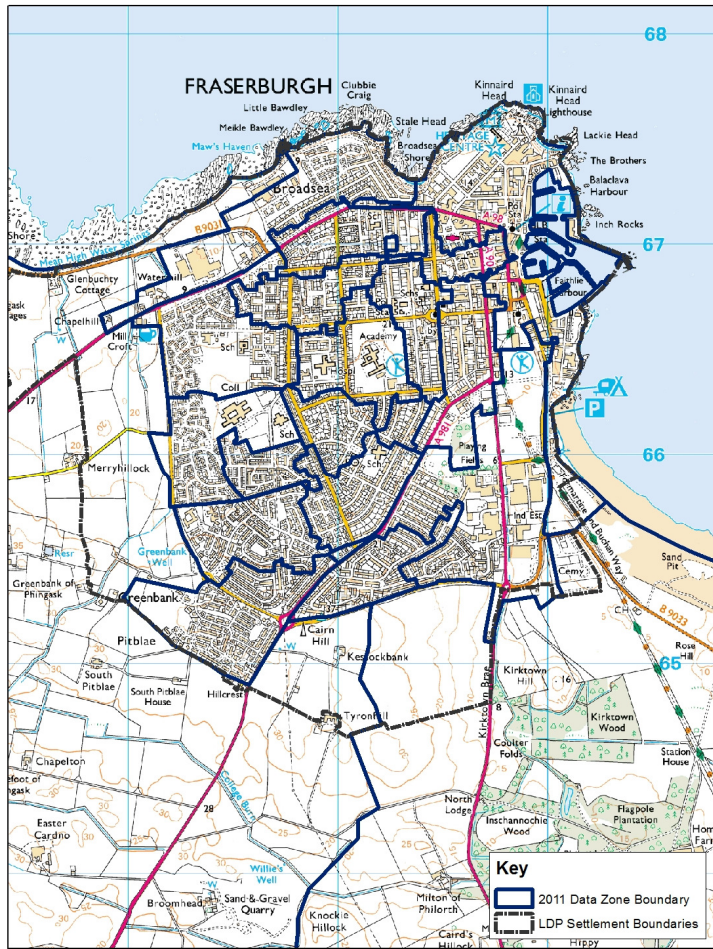
Map 5: Banff and Macduff data zones



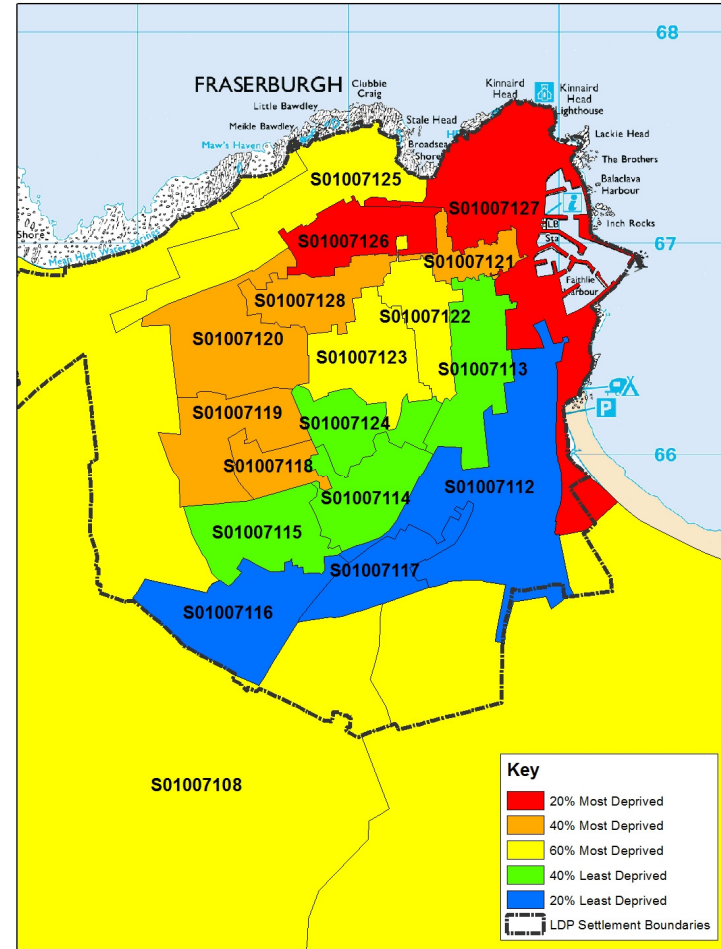
Map 6: Banff and Macduff SIMD16



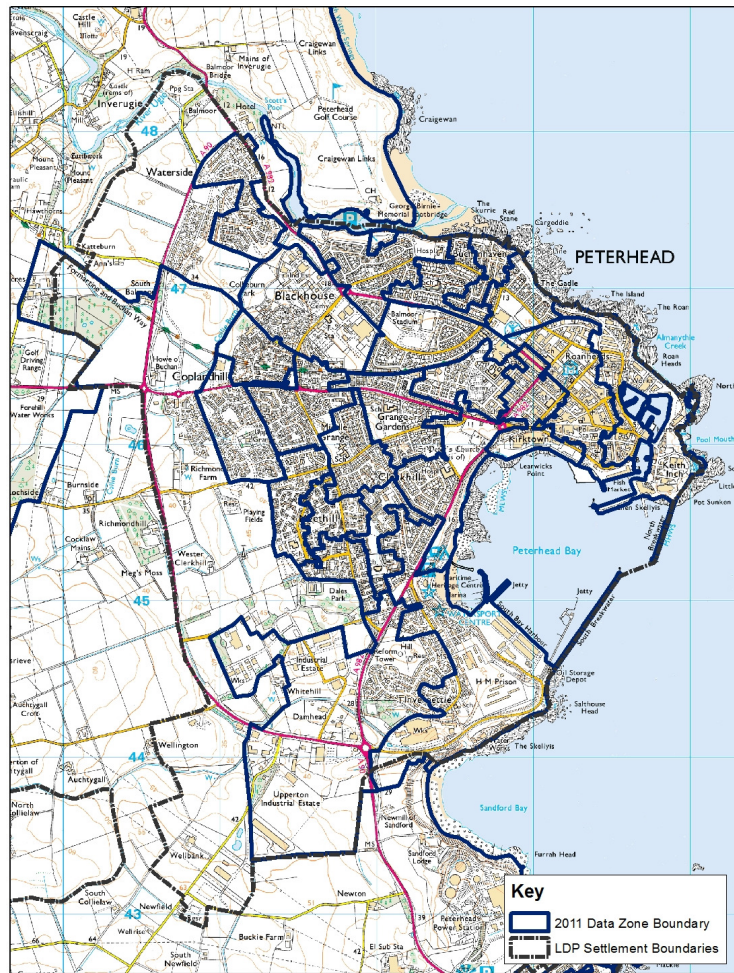
Map 7: Fraserburgh data zones



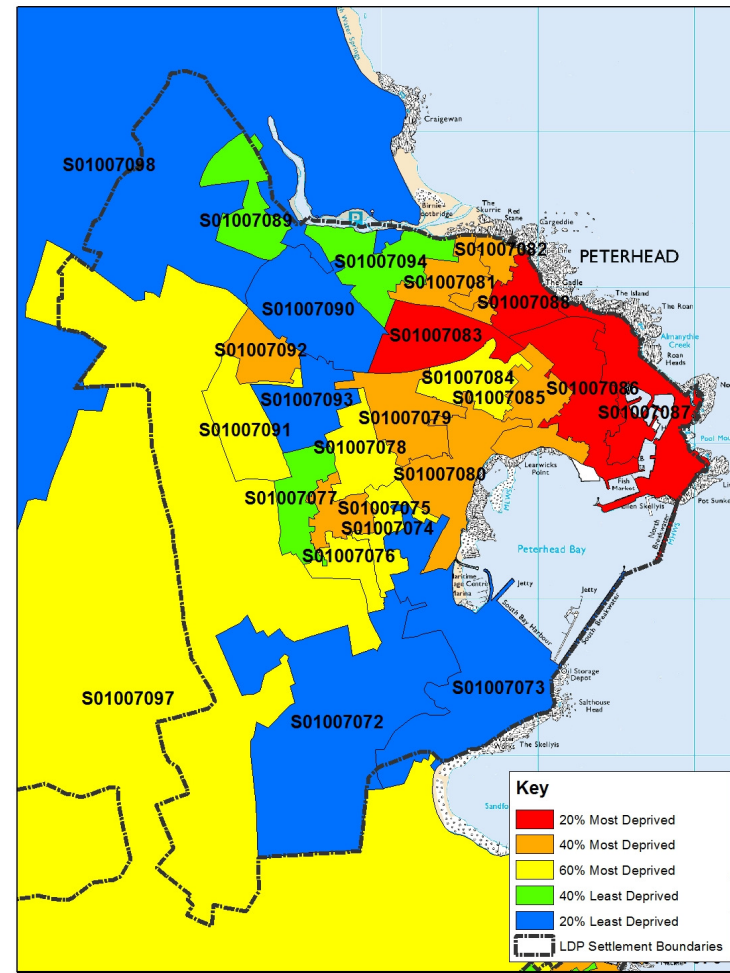
Map 8: Fraserburgh SIMD16



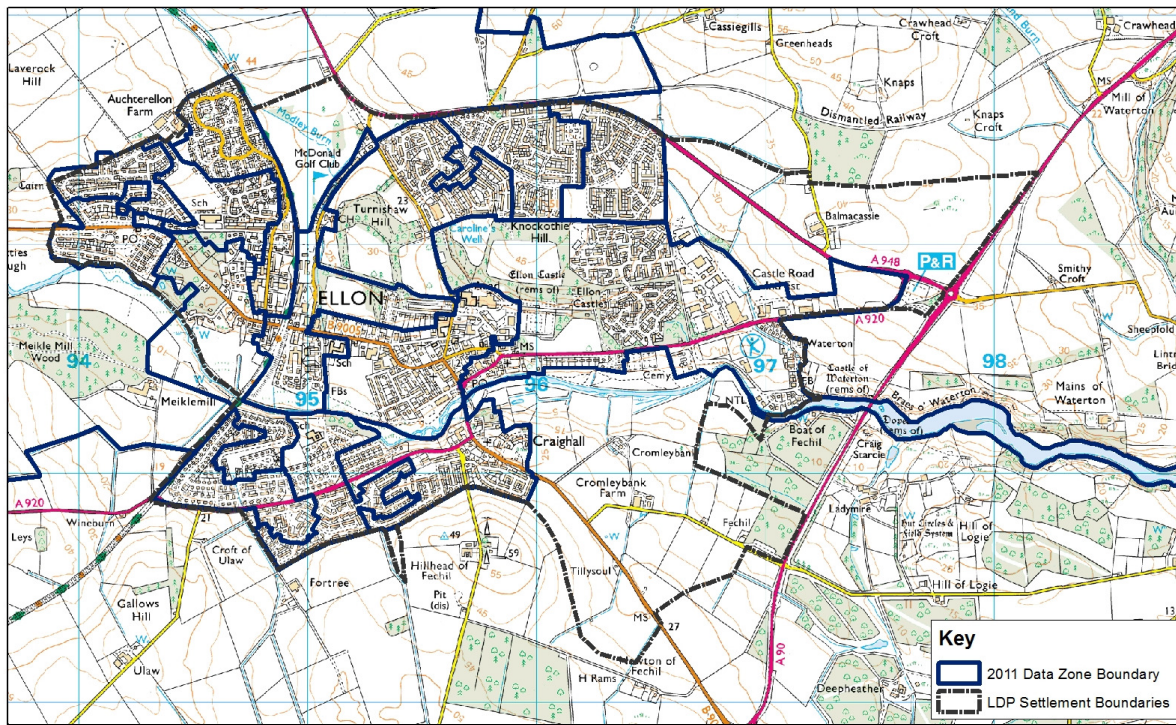
Map 9: Peterhead data zones



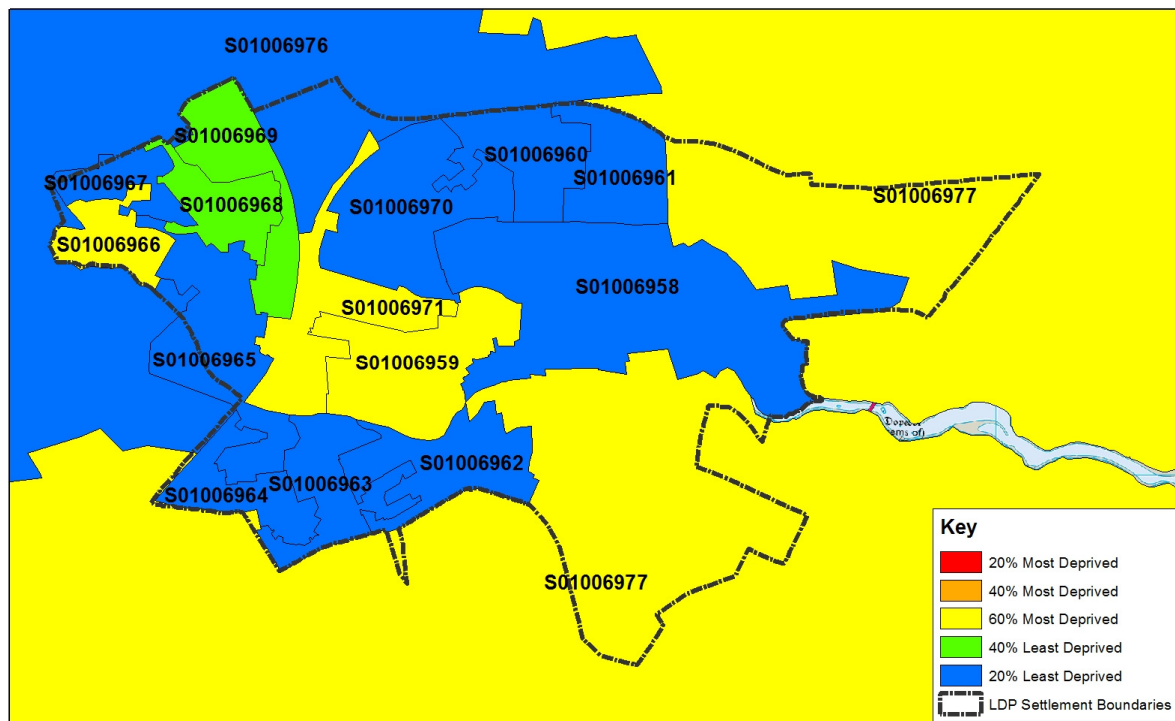
Map 10: Peterhead SIMD16



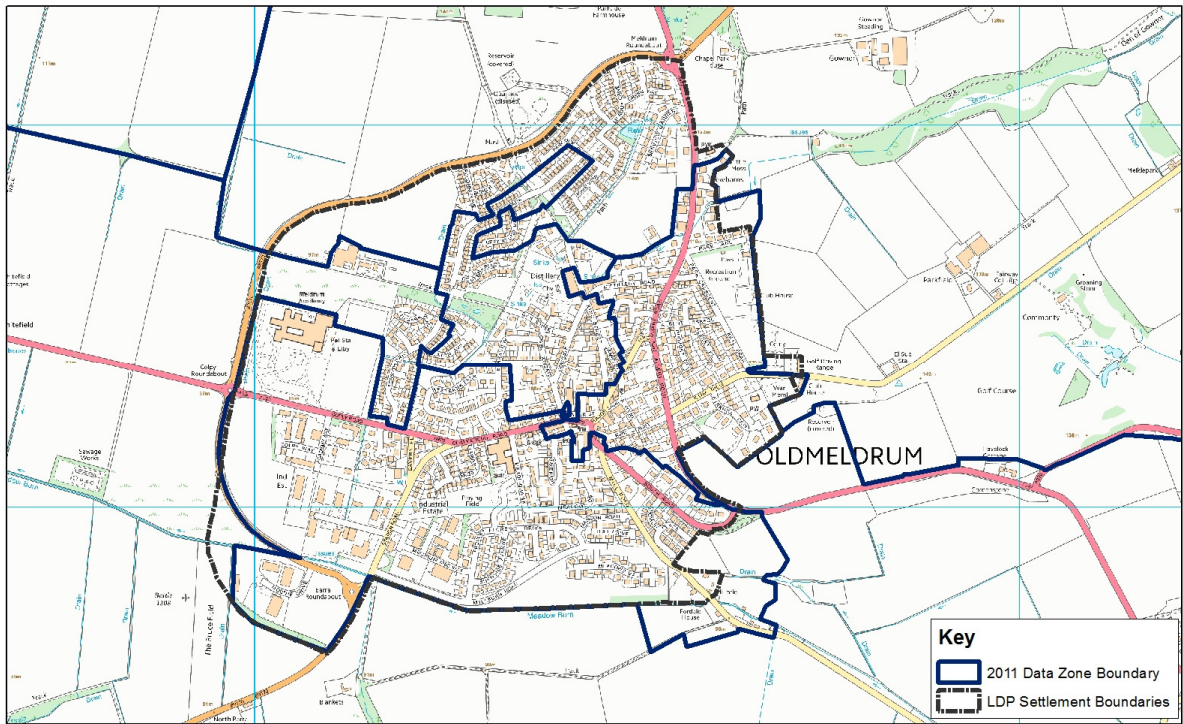
Map 11: Ellon data zones



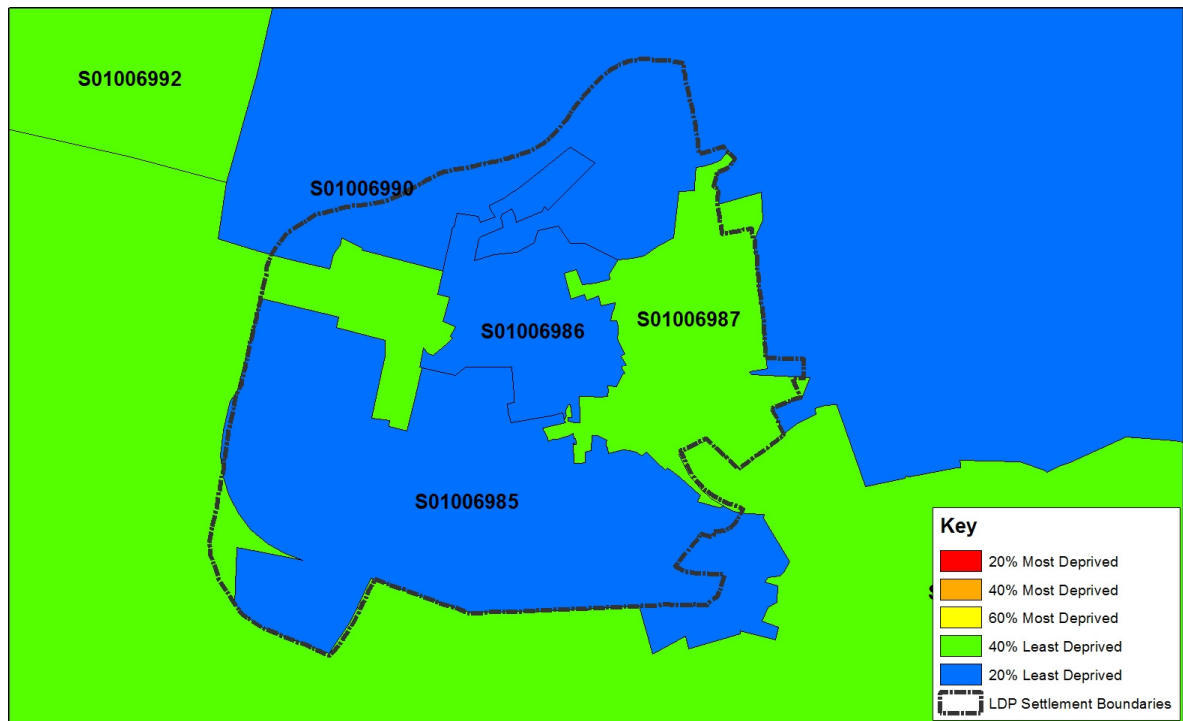
Map 12: Ellon SIMD16



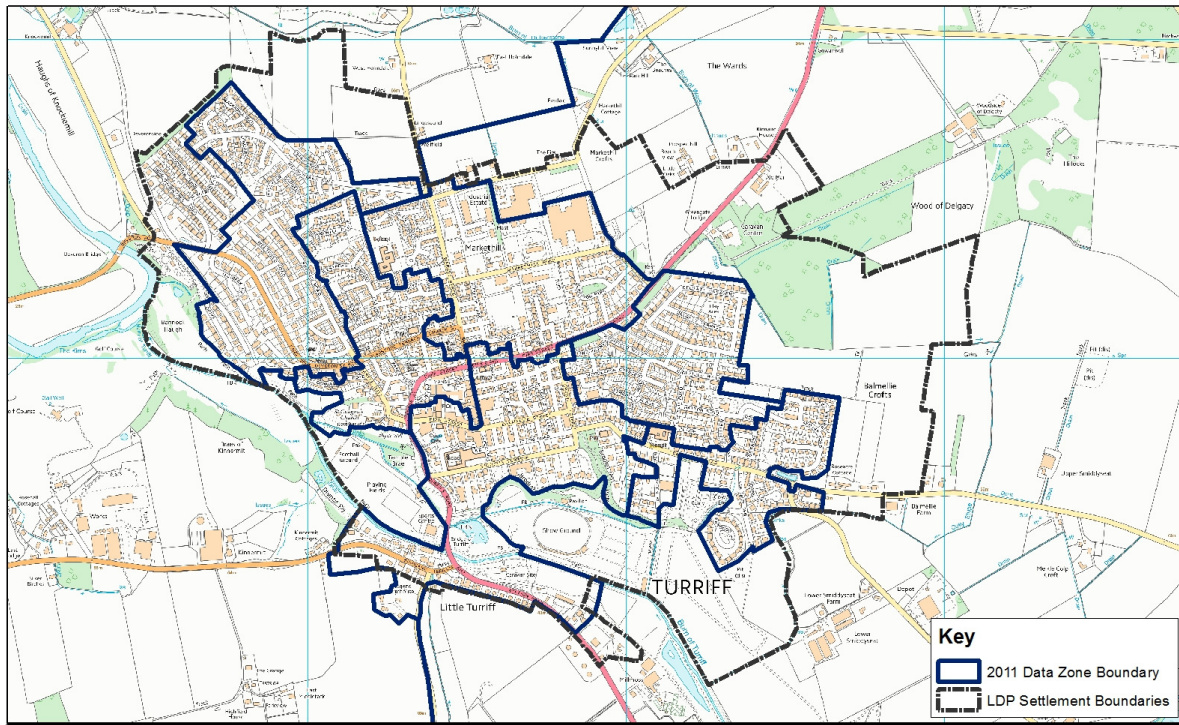
Map 13: Oldmeldrum data zones



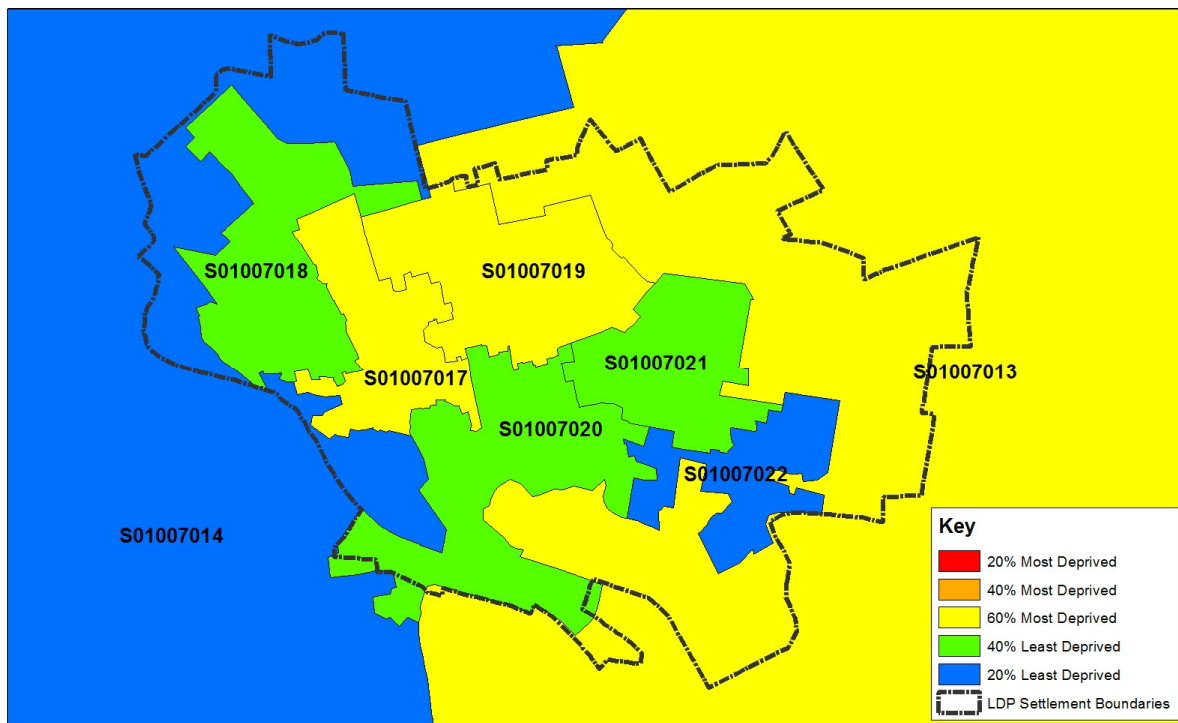
Map 14: Oldmeldrum SIMD16



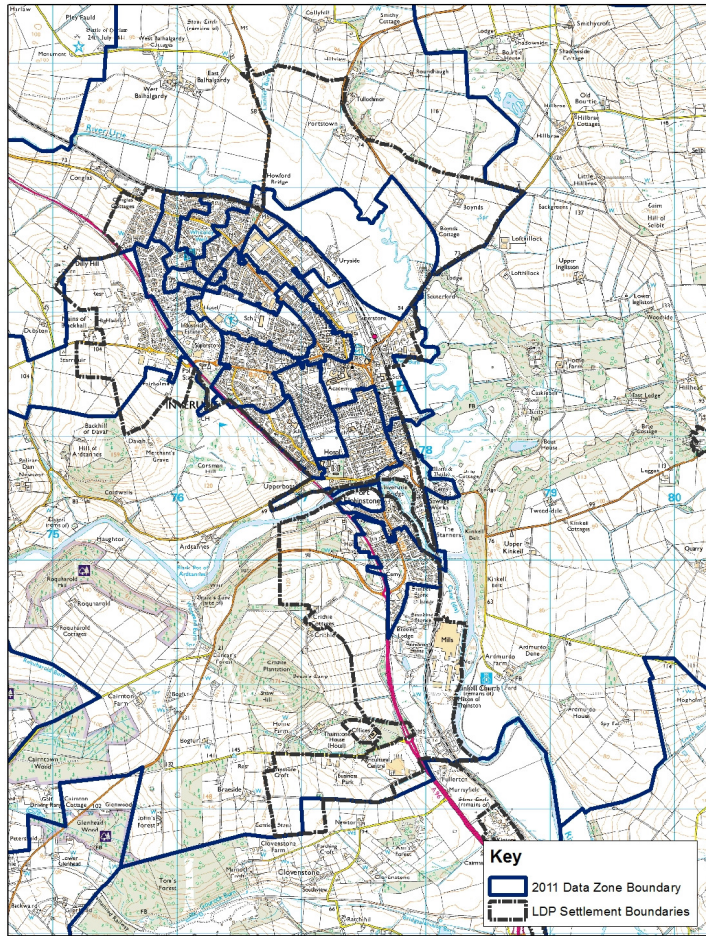
Map 15: Turriff data zones



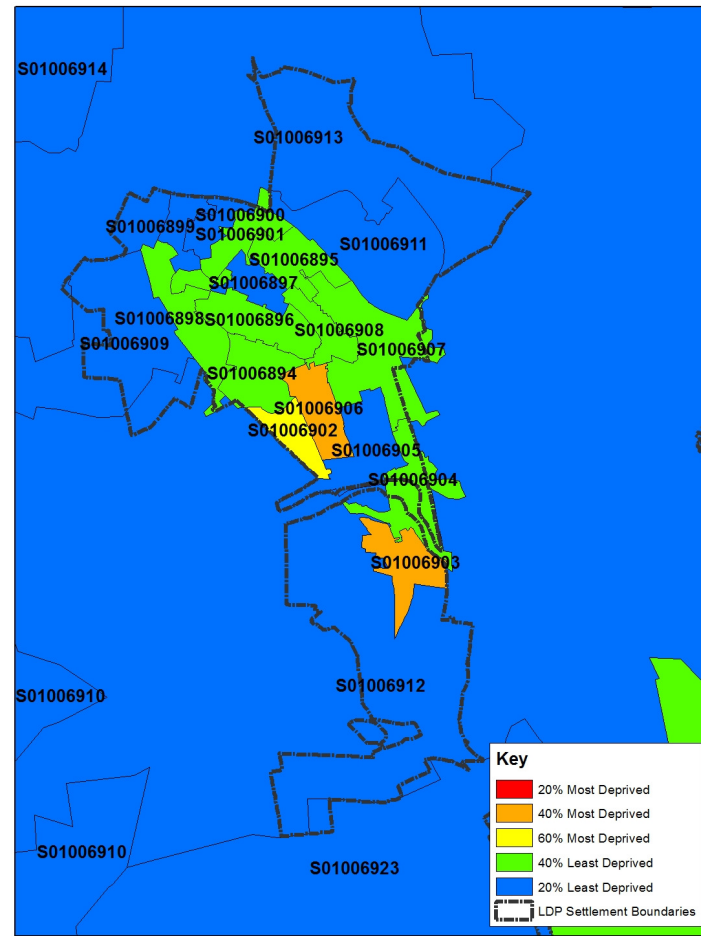
Map 15: Turriff data zones



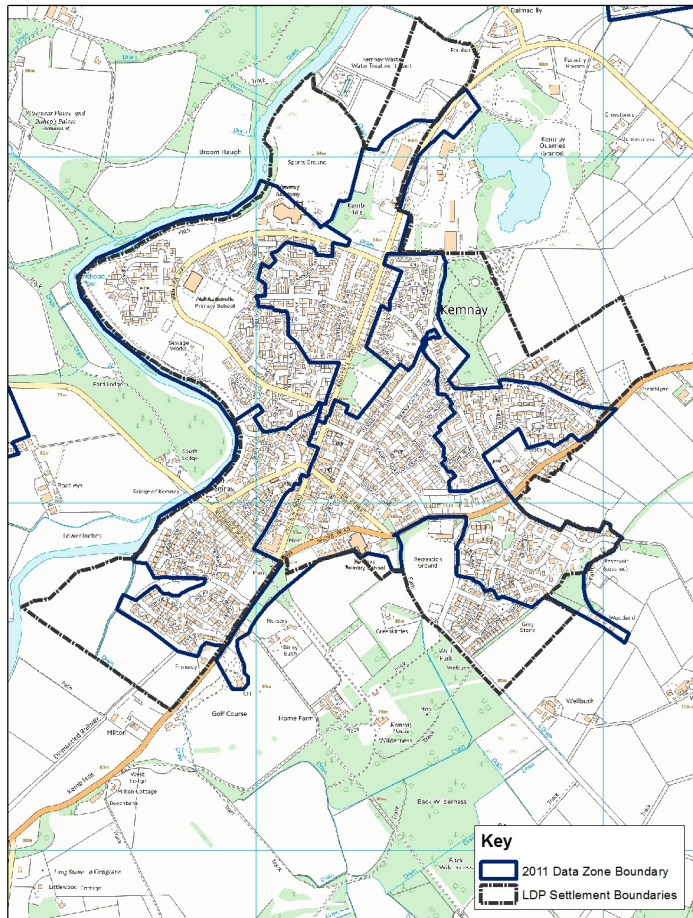
Map 16: Inverurie data zones



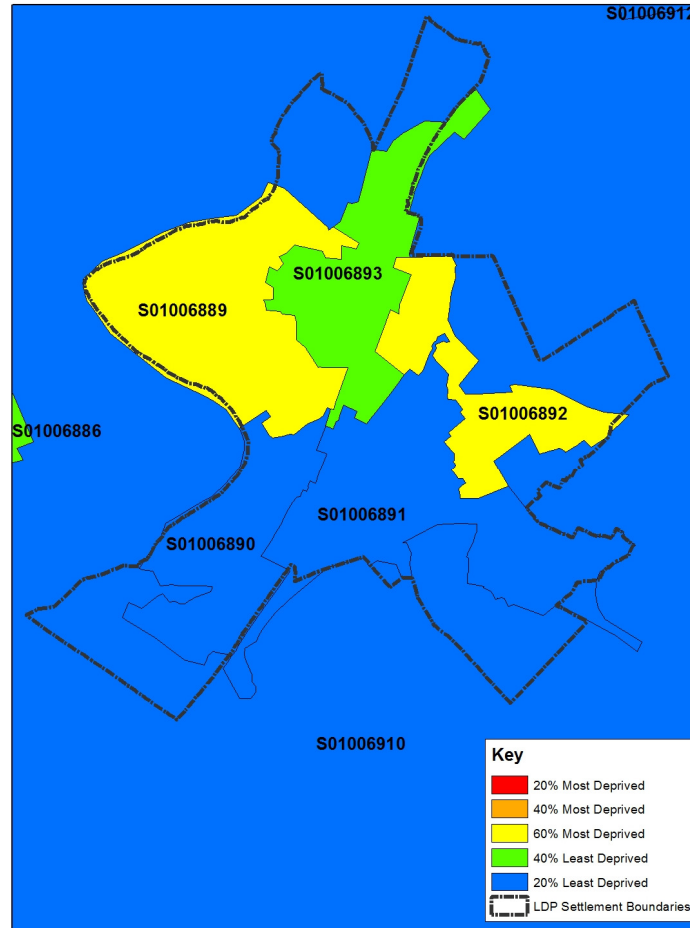
Map 17: Inverurie SIMD16



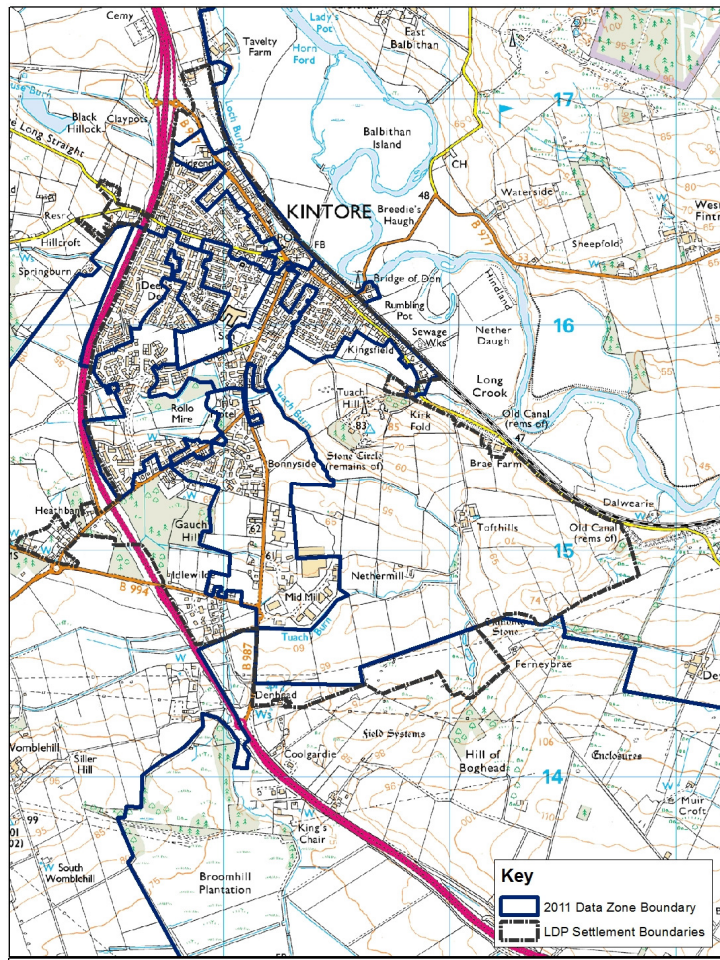
Map 18: Kemnay data zones



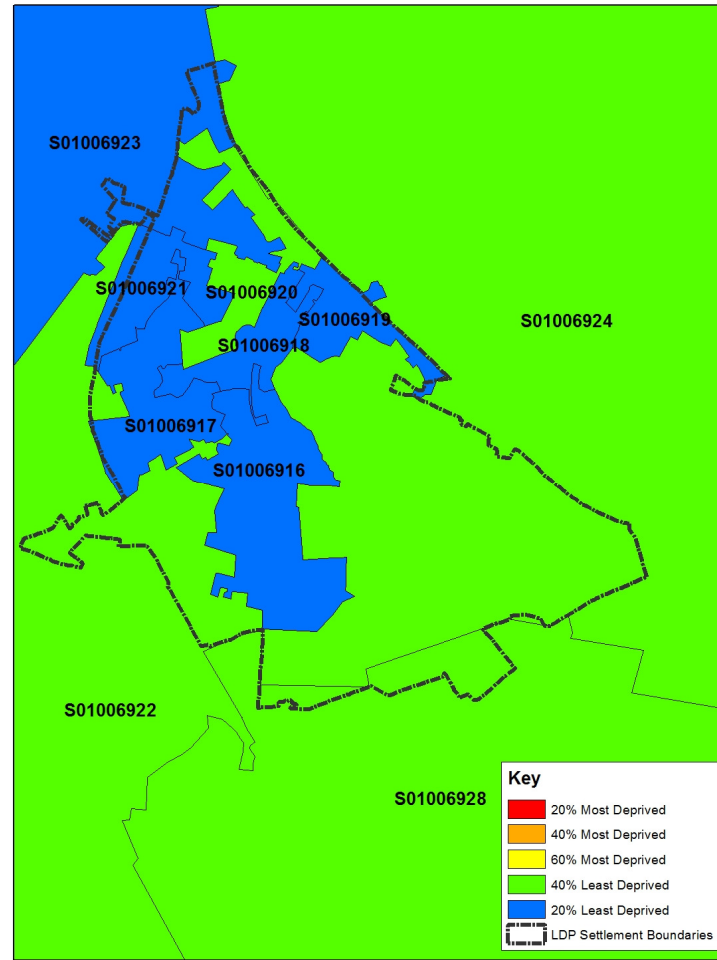
Map 19: Kemnay SIMD16



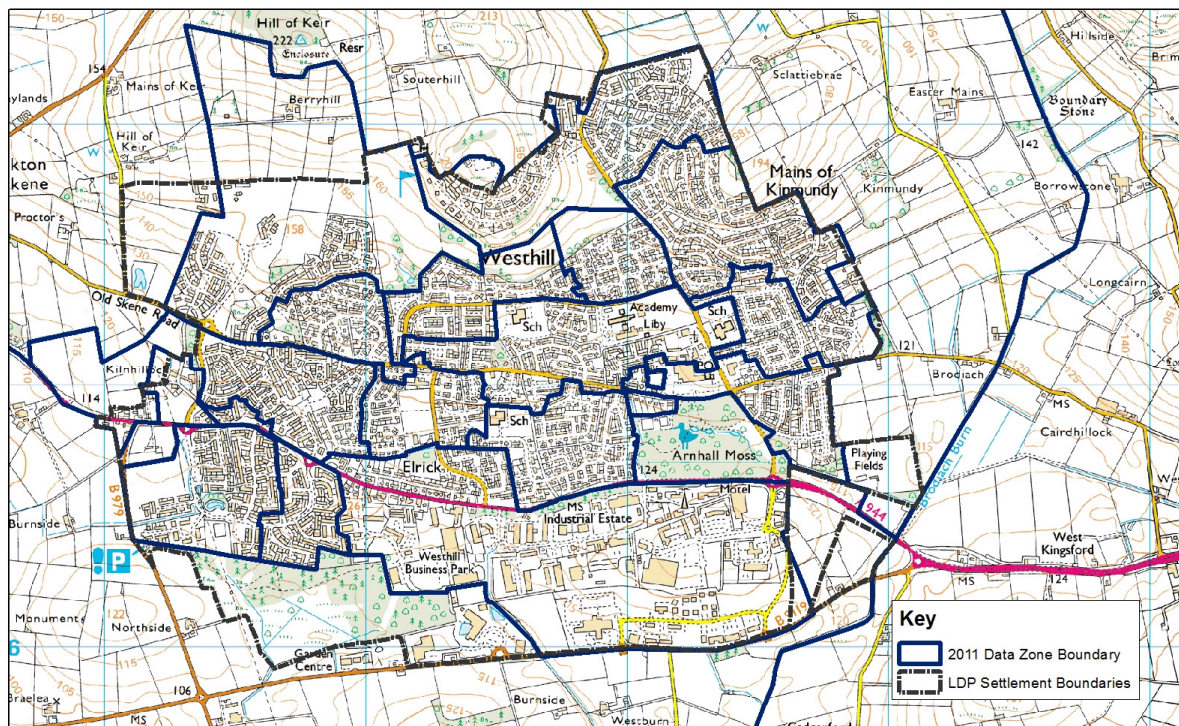
Map 20: Kintore data zones



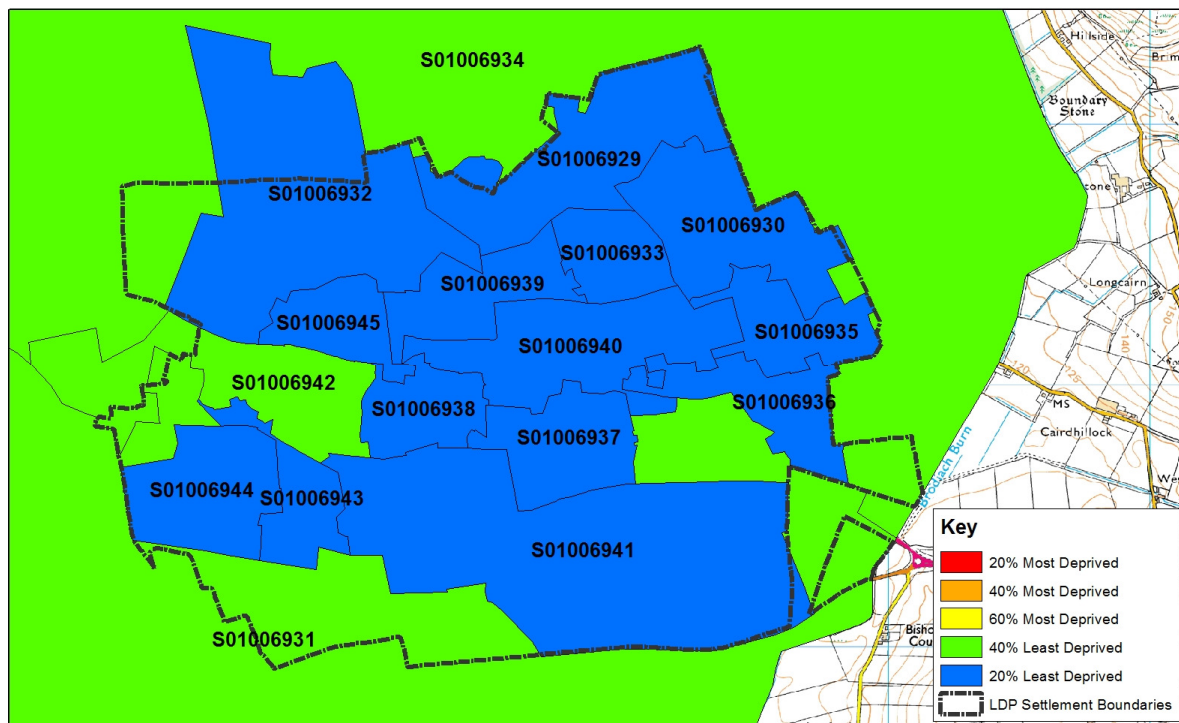
Map 21: Kintore SIMD16



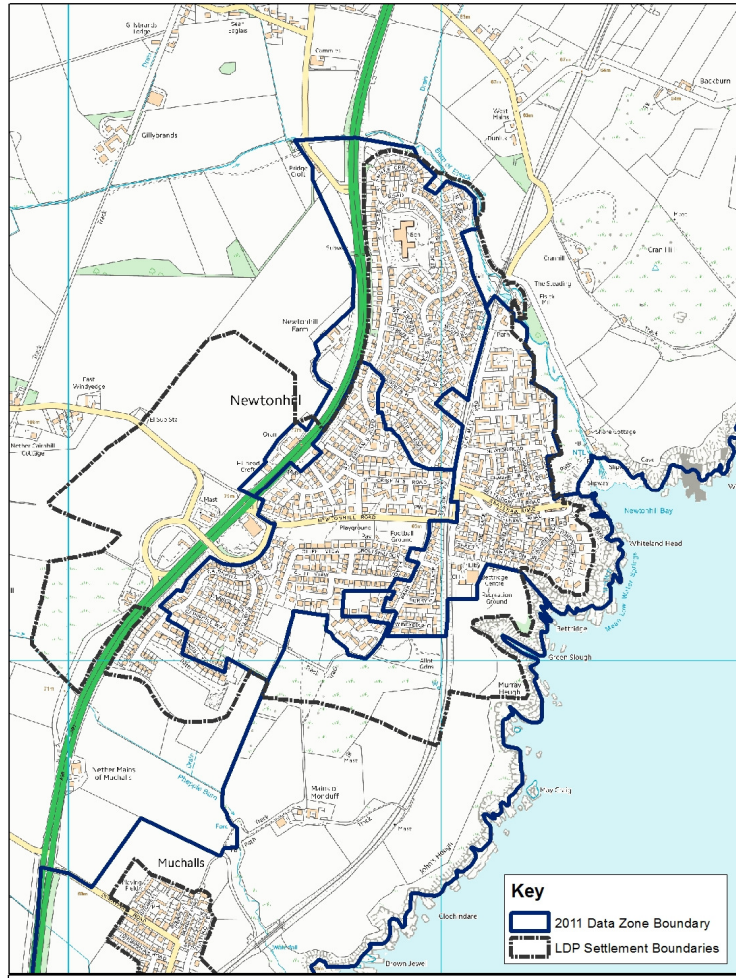
Map 22: Westhill data zones



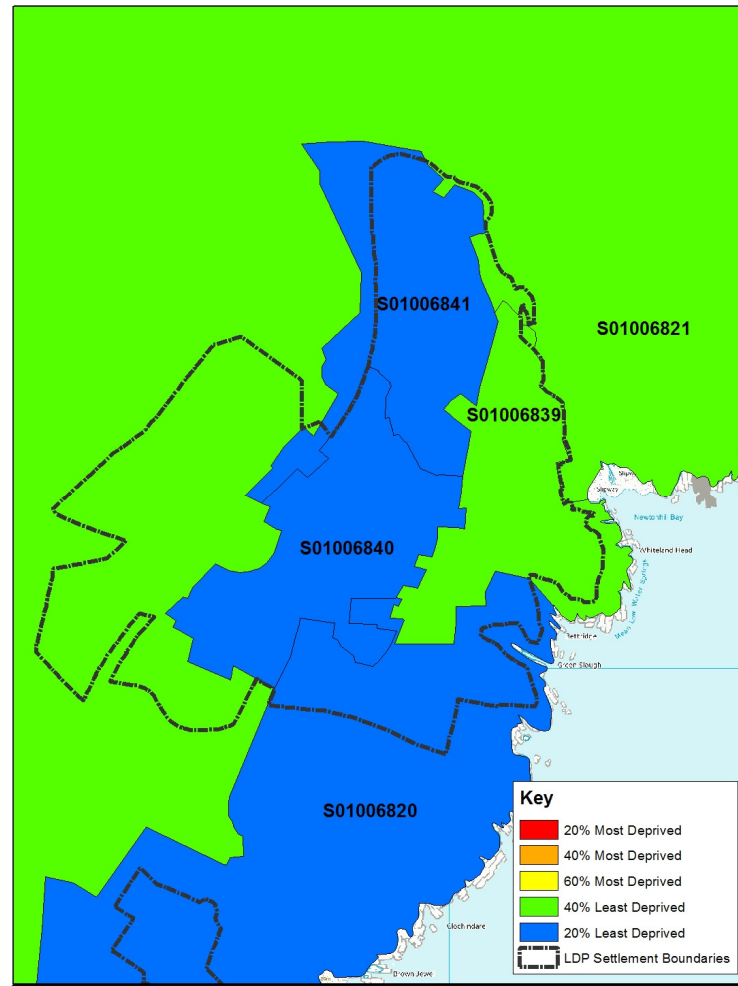
Map 23: Westhill SIMD16



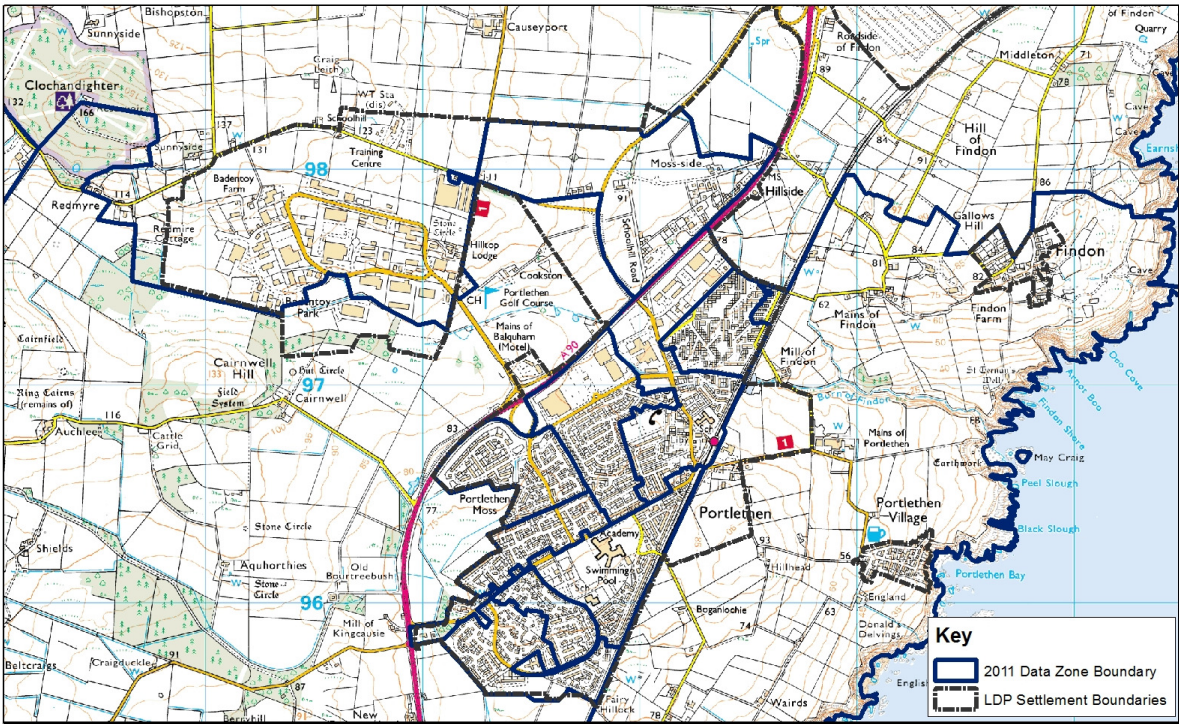
Map 24: Newtonhill data zones



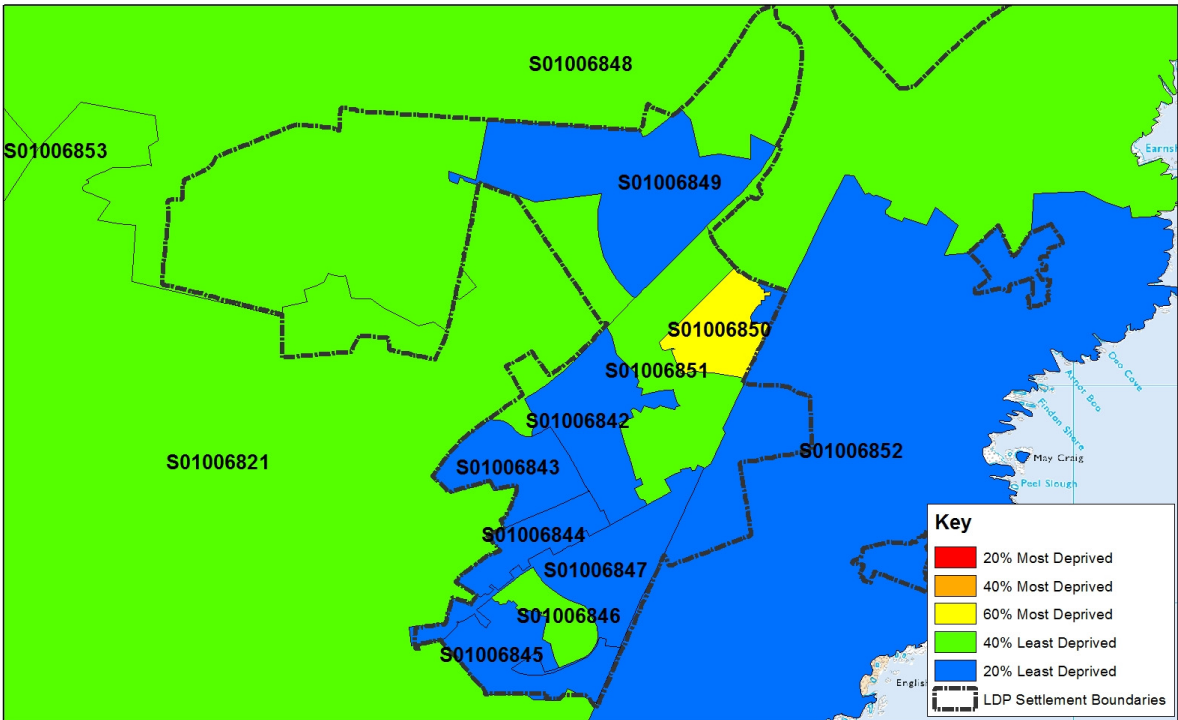
Map 25: Newtonhill SIMD16



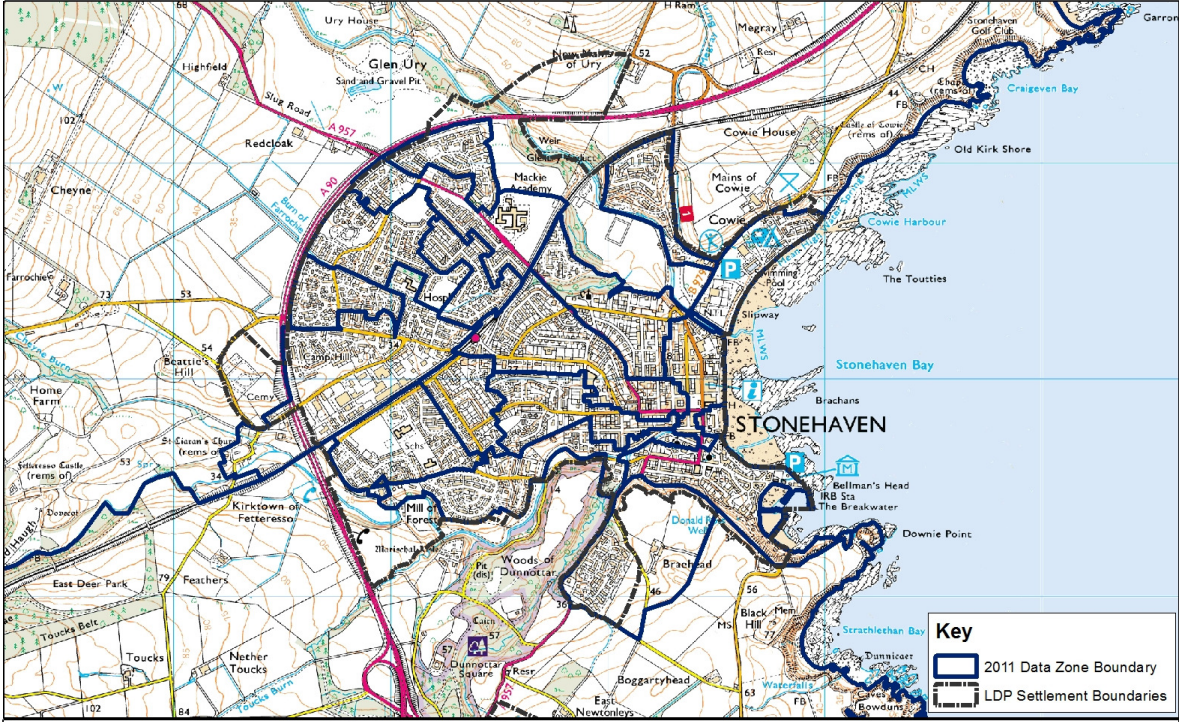
Map 26: Portlethen data zones



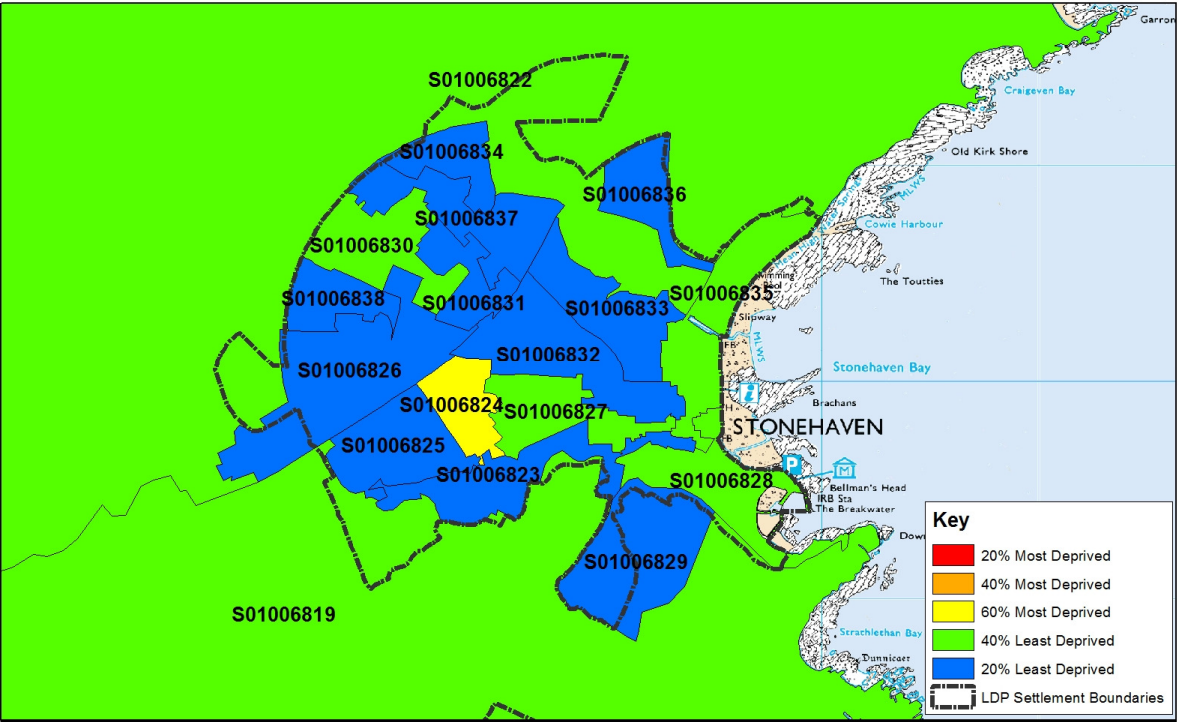
Map 27: Portlethen SIMD16



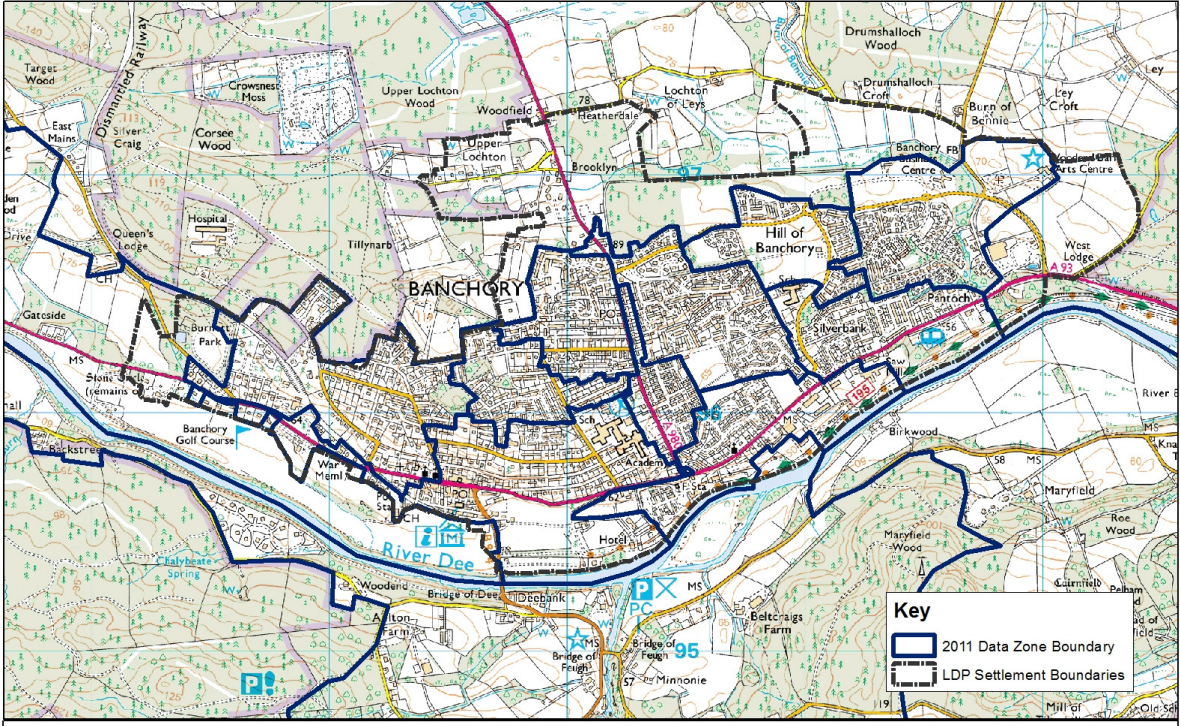
Map 28: Stonehaven data zones



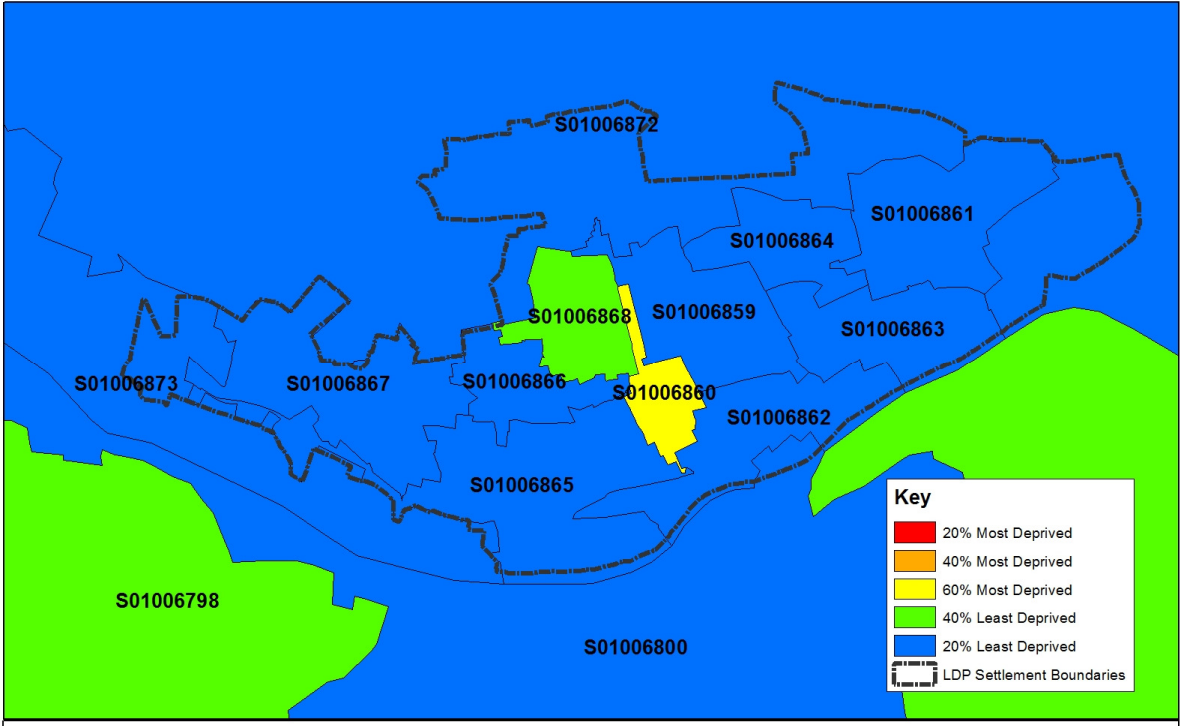
Map 29: Stonehaven SIMD16



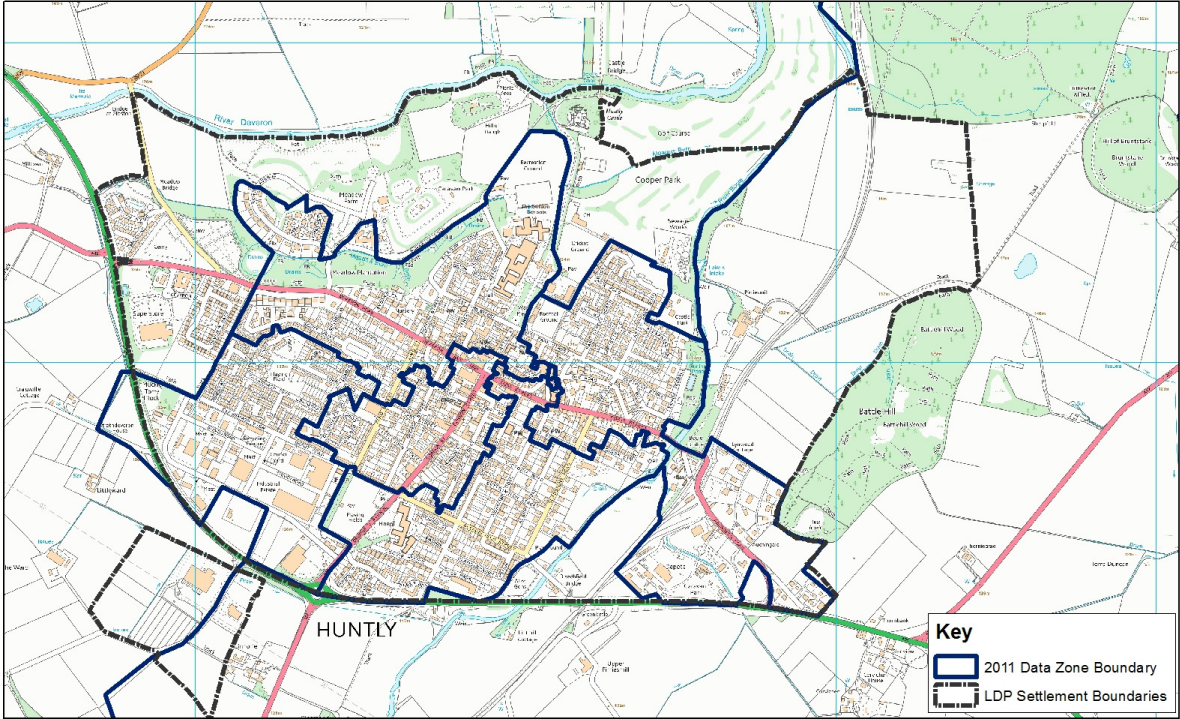
Map 30: Banchory data zones



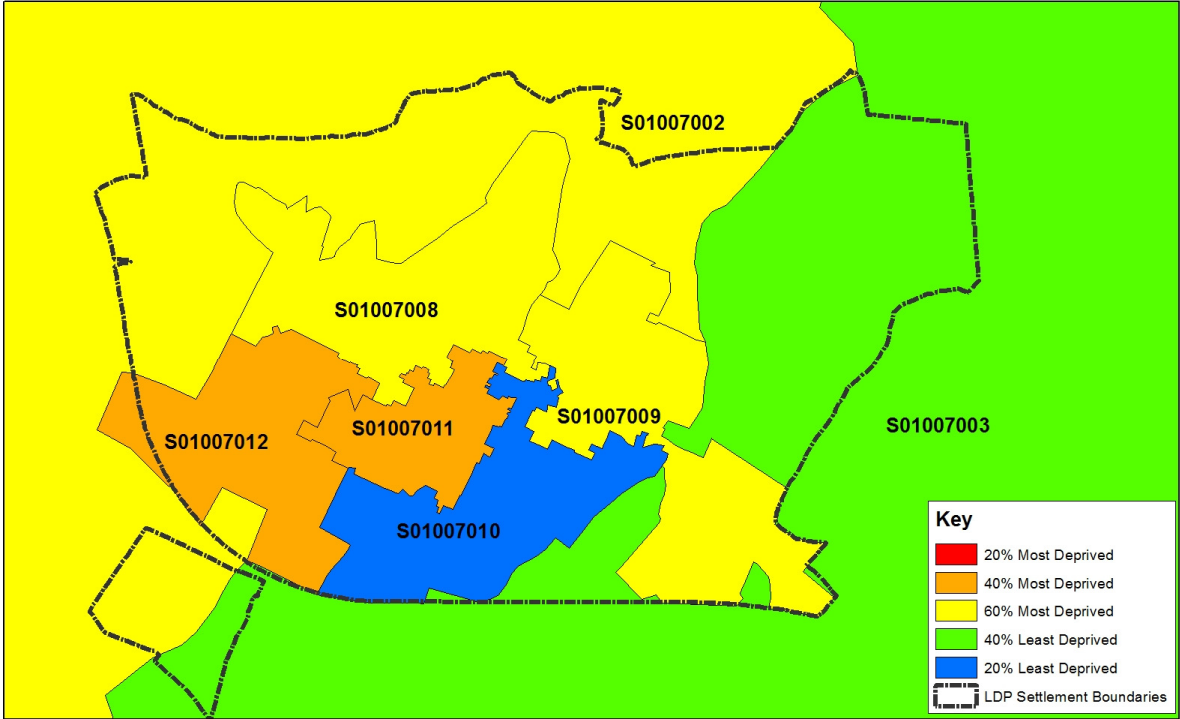
Map 31: Banchory SIMD16



Map 32: Huntly data zones



Map 33: Huntly SIMD16



Headquarters

Aberdeenshire Council,
Woodhill House,
Westburn Road,
Aberdeen,
AB16 5GB

Visit www.aberdeenshire.gov.uk or follow us on social media



[Twitter@aberdeenshire](https://twitter.com/aberdeenshire)



www.aberdeenshire.gov.uk/facebook



[instagram.com@aberdeenshire](https://www.instagram.com/aberdeenshire)

Report prepared by
Date