

From mountain to sea

Low Cost Shared Equity FOR SALE

3 Brighead Way, Inverbervie DD10 0AJ

3 bed end terrace house
£147,920



Low Cost Shared Equity - Property Schedule

Description

3 bed end terrace house

Price

£147,920

Floor Space

104 m²

Income Threshold

£54,000 or less.

Included in Sale

Dishwasher and Fridge Freezer

Factoring Charge

PMC Property maintenance £21 per month

Parking Arrangements

Driveway

Council Tax Band

Band D

Garden

Private Garden.

Year Built

2014

Heating Type

Gas Combi boiler

Eligibility Criteria

See Guidance Notes for Eligibility Criteria.

Energy Performance Rating

Band C

Closing Date

Return applications as soon as possible. Applications will be assessed on a first come basis.

Disclaimer

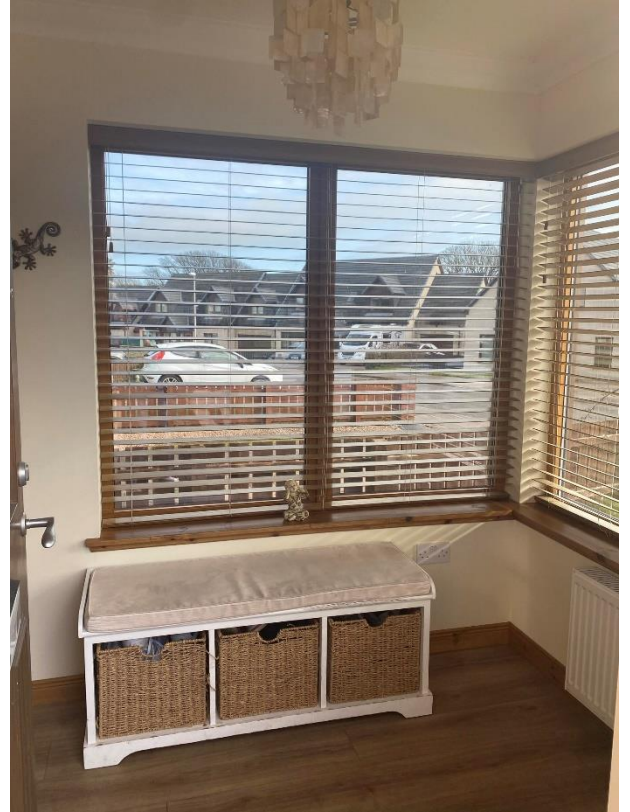
The information in this schedule regarding the specific property has been supplied by the owner and whilst every care has been taken in the preparation of this schedule and the information is believed to be correct, it does not warrant or constitute any offer or contract.

*Factoring fees may be subject to change and may require an initial deposit. Please discuss with your solicitor if nominated.

Front of House



Porch



Alternative View of Porch



Living Room



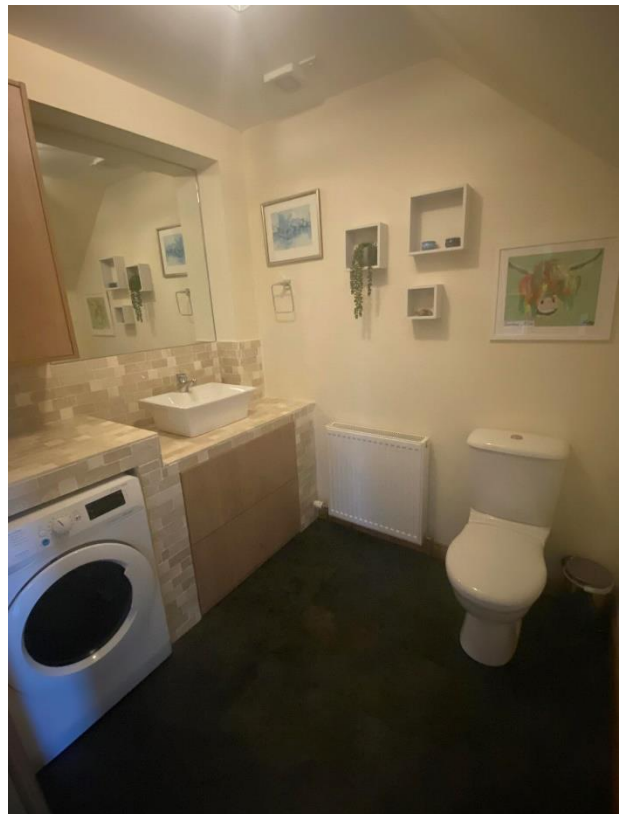
Alternative view of Living Room



Alternative view of Living Room



Downstairs Toilet



Kitchen



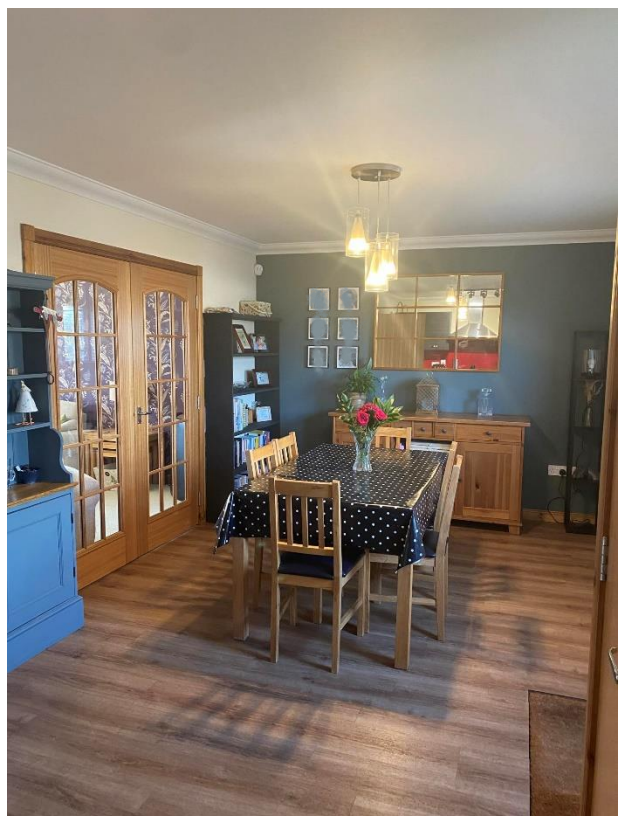
Alternative View of Kitchen



Dining Area



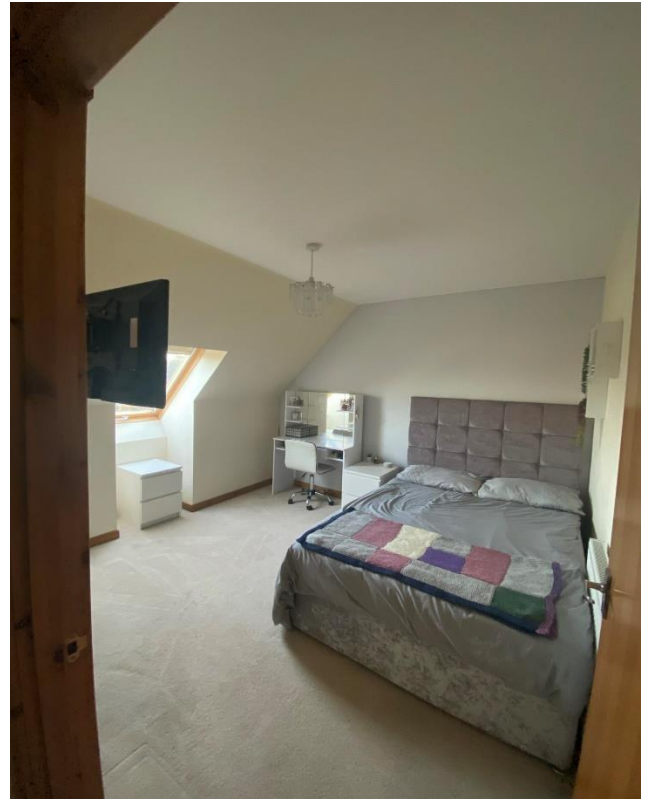
Alternative View of Dining Area



Bedroom 1



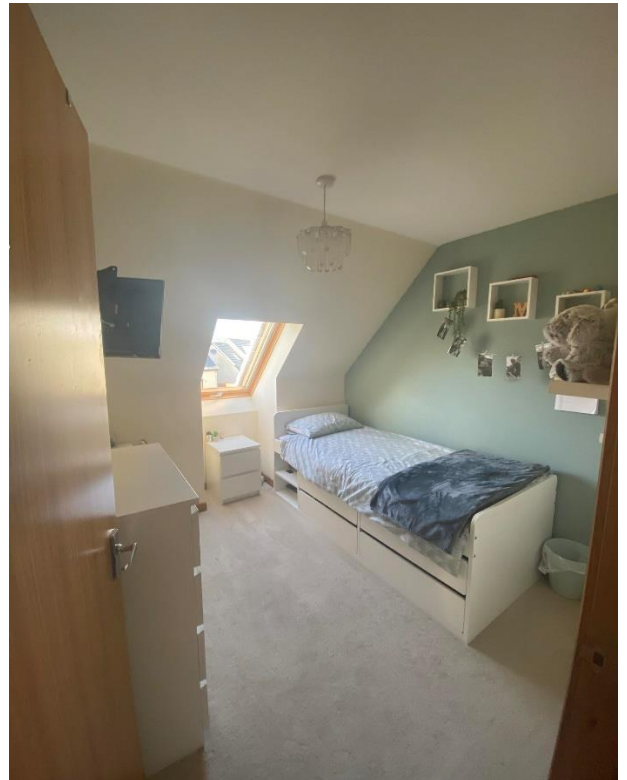
Bedroom 2



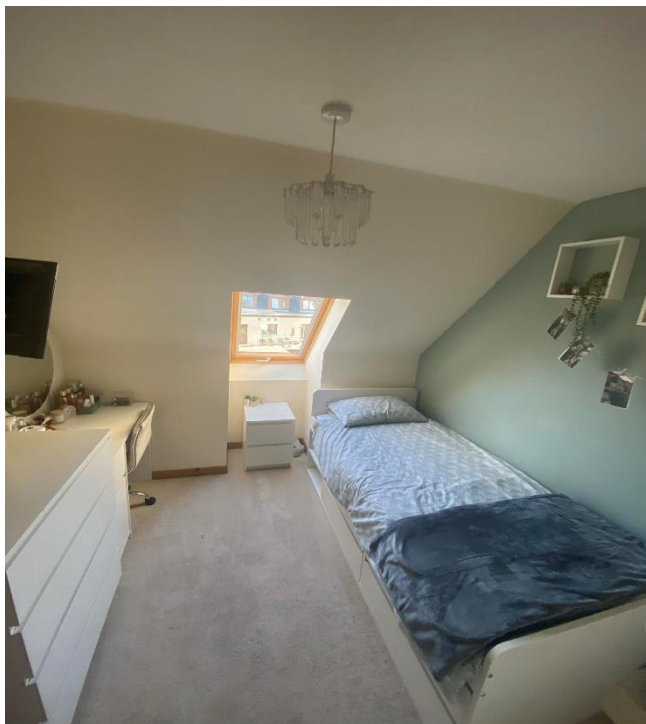
Alternative View of Bedroom 2



Bedroom 3



Alternative View of Bedroom 3



Bathroom



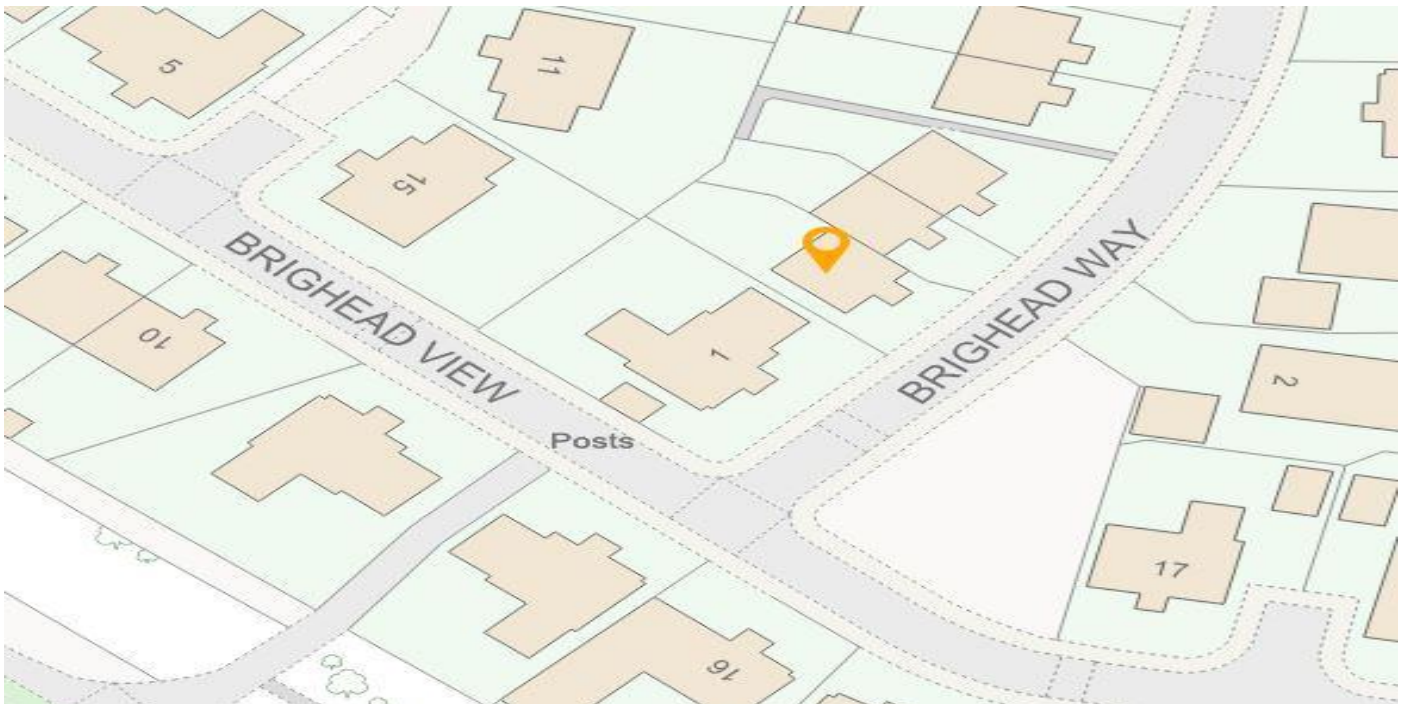
Alternative View of Bathroom



Location



Inverbervie is a coastal town approximately 11 miles south of Stonehaven and within commuting distance of both Aberdeen and Montrose. The town is well served by shops, a leisure centre and medical centre. Primary schooling is local with secondary education available at Mackie Academy in Stonehaven or at Mearns Academy in Laurencekirk.



Further Information

For further information please contact:
Development Officer - 01467 539457
LCHO@aberdeenshire.gov.uk