

## Settlement Summary: Kemnay

Population: 3765

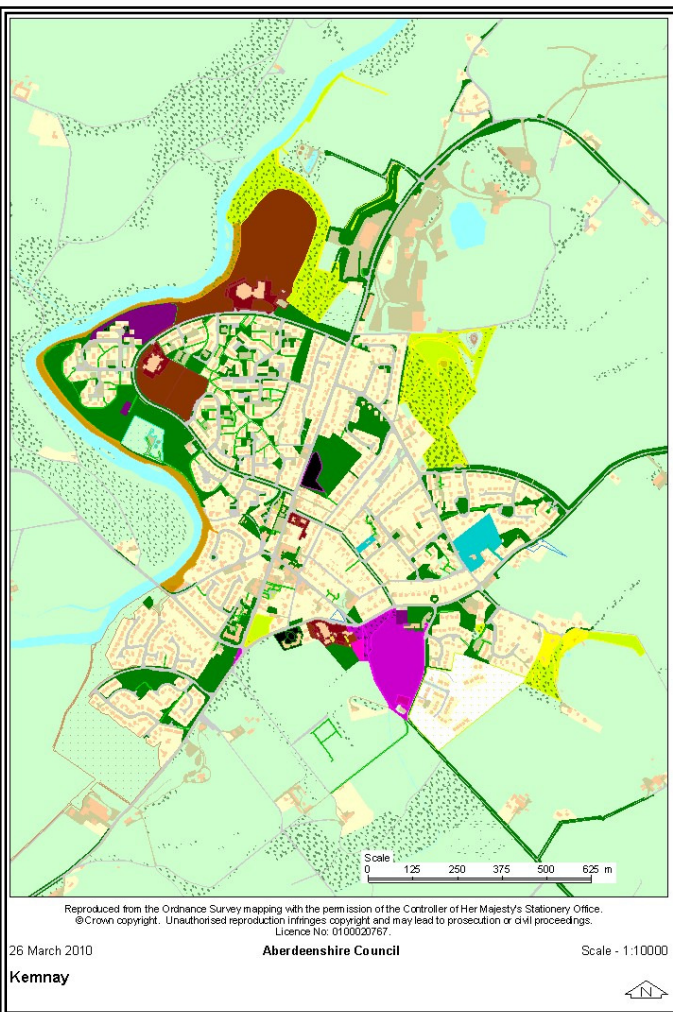
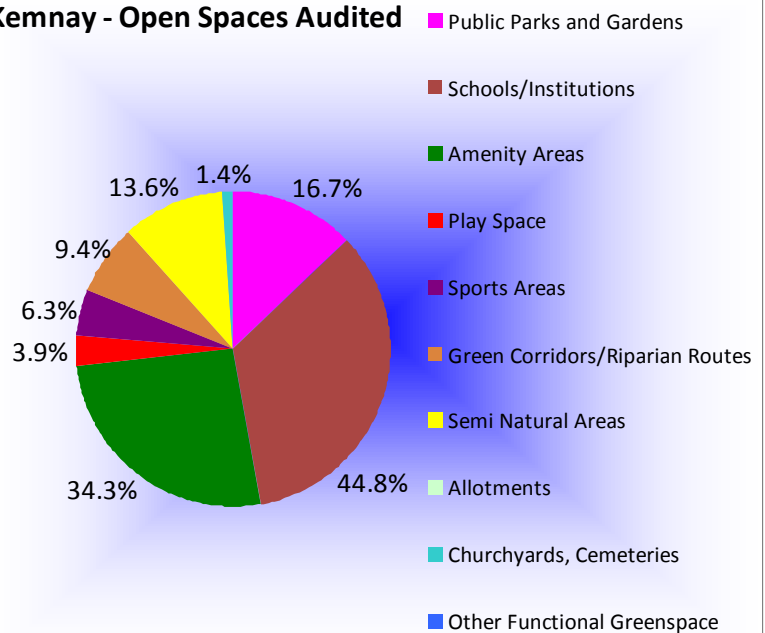
### Observations (of Community Council)

None received.

### Green Network Links

Existing links between the town park, the riverside and the school merit long term protection. The residential estate next to the Alehousewells primary school is notable for its interconnecting hedge lined footpaths linking to greenspaces and public roads. Any new development should protect and enhance green network links within the settlement.

#### Kemnay - Open Spaces Audited



### Open Space Requirements

There is a wide range of play facilities for all age groups on Kemnay, including a stake park, outdoor exercise facilities and a number of sports pitches for various activities. Although auditors noted there may be scope to enhance facilities for teenagers, the disused concrete area within the park has already been considered for a number of projects, which have not had the support of local residents. The riverside path network could be expanded, and path maintenance improved at the tennis club and the woodland southeast of the town, at the top of Parkhill.

Kemnay currently has 28.55% open space which is slightly below Aberdeenshire's average of 30.56%, however this is not surprising given the constrained boundary of the town due to the river bounding the settlement to the East.

Kemnay has above average percentage of amenity green space and green corridors, the latter largely attributable to the town's location on the River Don.

Public Parks and Gardens  
Play Space  
Semi Natural Areas  
Other Functional Greenspace

Schools/Institutions  
Sports Areas  
Allotments

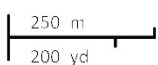
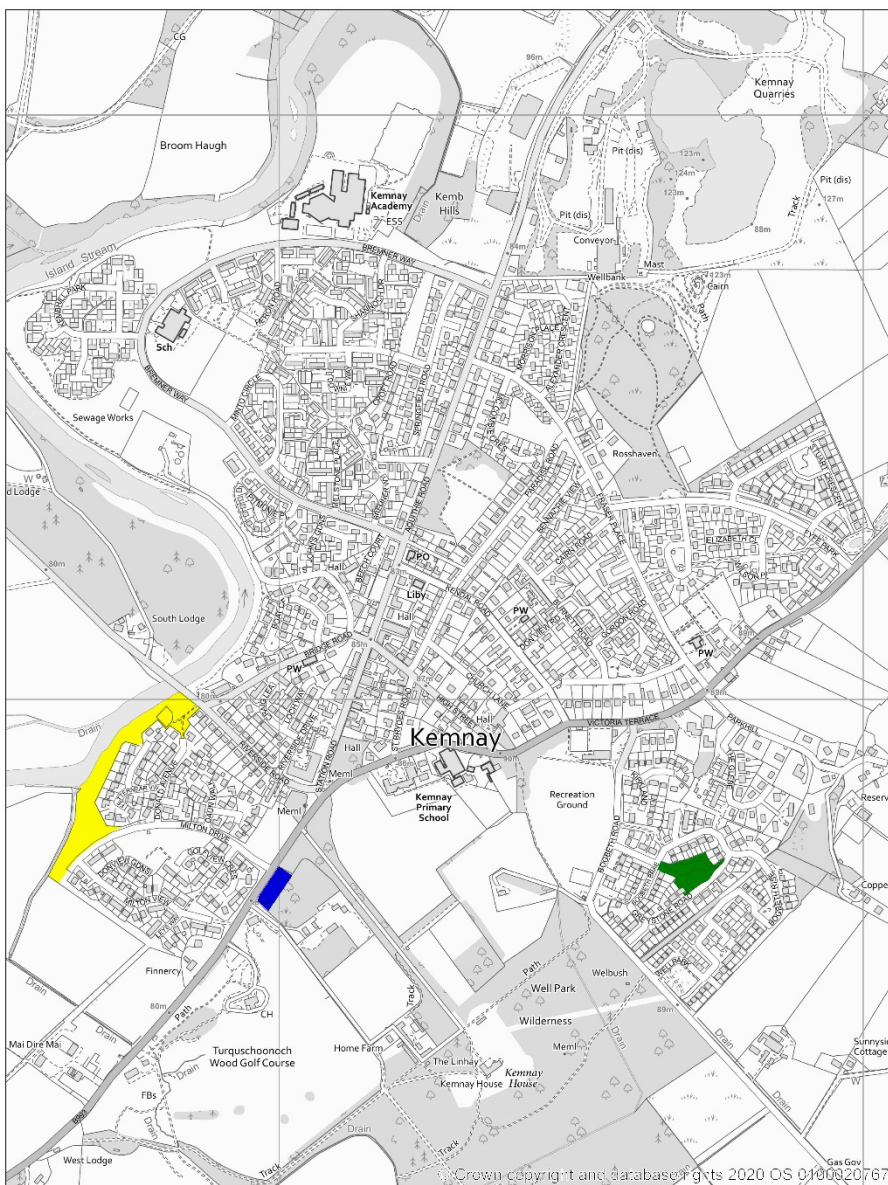
Amenity Areas  
Green Corridors/Riparian Routes  
Churchyards, Cemeteries

## Open Space Audit Update 2019: Kemnay

An update exercise was carried out in 2019 to account for new open spaces arising from major developments completed since the Open Space Audit 2010, and to address any known disparities/gaps in information. The scope of the update exercise did not include a review of the Open Space Audit 2010. The Audit update 2019 has been used to assist in the preparation of the Proposed Aberdeenshire Local Development Plan 2020.

**This is an interim Audit.** Whilst this information will feed into a future comprehensive Open Space Audit, at this stage there may be some auditing inconsistencies across settlements due to factors such as community interest, and landscape/topography influencing how open spaces are identified, particularly at and around the edges of settlement.

Allotments are excluded as these are audited separately as part of the Food Growing Strategy 2019-2030.



- |   |   |   |
|---|---|---|
| <span style="color: magenta;">■</span> Public Parks and Gardens | <span style="color: brown;">■</span> Schools/Institutions | <span style="color: green;">■</span> Amenity Areas                    |
| <span style="color: red;">■</span> Play Space                   | <span style="color: purple;">■</span> Sports Areas        | <span style="color: orange;">■</span> Green Corridors/Riparian Routes |
| <span style="color: yellow;">■</span> Semi Natural Areas        | <span style="color: lightgreen;">■</span> Allotments      | <span style="color: cyan;">■</span> Churchyards, Cemeteries           |
| <span style="color: blue;">■</span> Other Functional Greenspace |   |   |