

Settlement Summary: Newmachar

Population: 2374 (including Kingseat)

Observations (of Community Council)

None received.

Green Network Links

There are good links around Newmachar, but connections between areas of open space within the village appear weak. New development should demonstrate a connection to existing and surrounding greenspace wherever possible.

Open Space Requirements

In Newmachar, the principle issue seems to be that of a number of spaces either with no clear function, or requiring significant improvement to be of use to the community. The area around the village hall would benefit from being regenerated, with regard to general clearing of litter as well as creating a clearer function for the land. This might be as a community nature area, community garden, allotments, or a playing field for example, although any such initiative would depend on the further views of residents. Similarly, the natural space to the rear of Mameuleh Crescent is currently overgrown and inaccessible, and the Kinmundy amenity greenspace appears underused. Should there be a demand for allotments in the village, there may be potential for food growing on these sites – particularly those which have access (such as the Hall), parking facilities and a water supply.

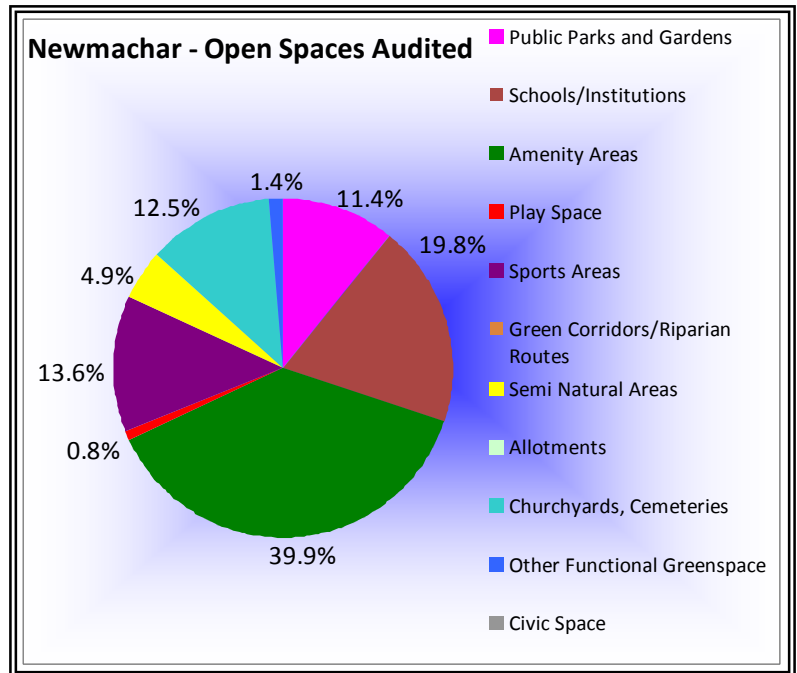
In the event of new developments in Newmachar, the upgrading of these areas may be more appropriate than the addition of new spaces or equipment elsewhere.

Other suggested potential improvements to opens space include replacement seating at the library play area.

Although auditors made no adverse comment on the existing facilities at Summerhill Park, the location of this at the southern end of the village makes it relatively remote for much of the community. There may be merit in focussing improvements in access to open space (eg: through provision of seating, play equipment, basketball facility) towards the north side of the village.

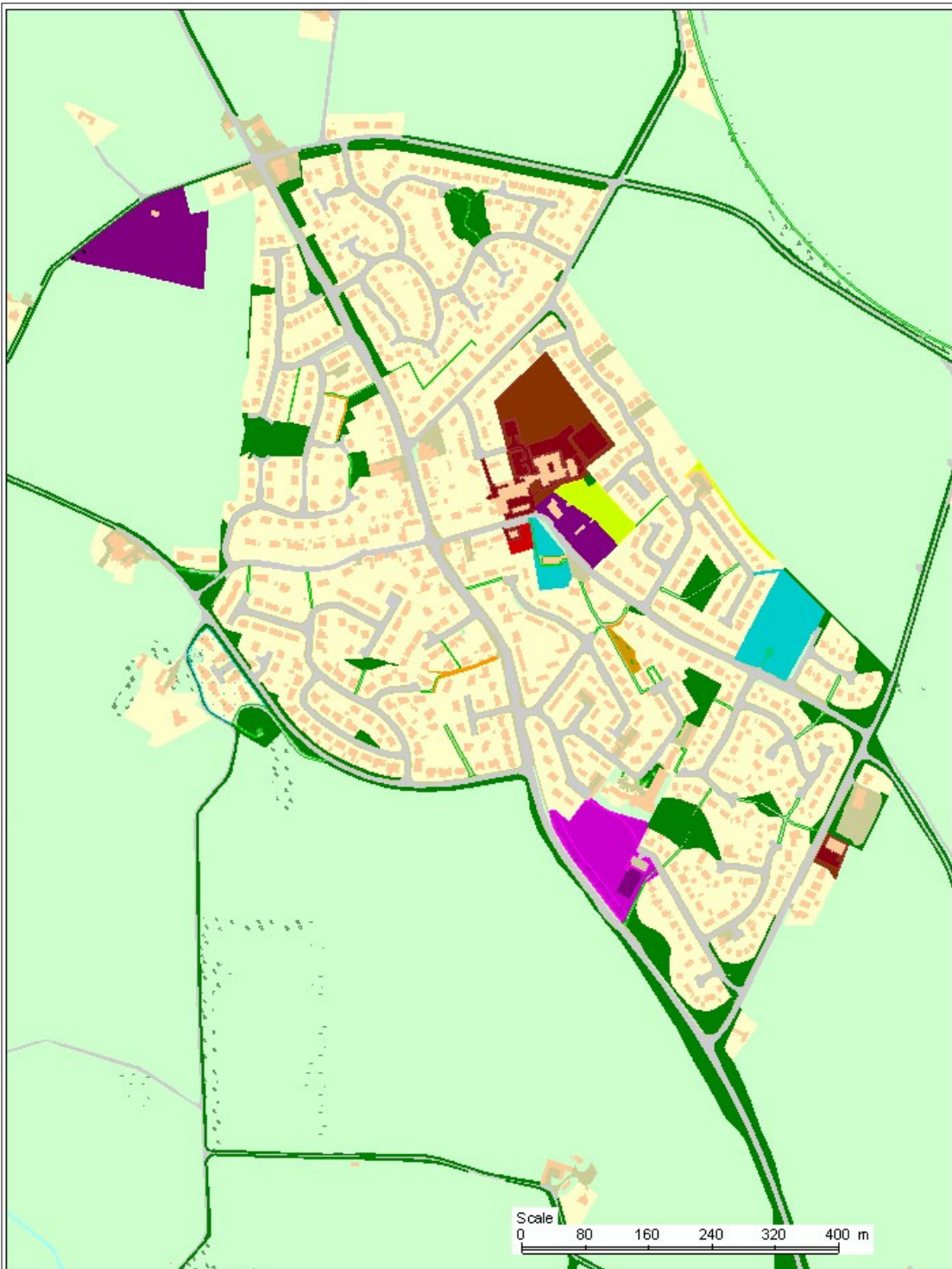
Overall, Newmachar has a relatively high proportion of amenity green space, but as demonstrated, there is scope for improvement in quality and function of what is already available.

At the time of audit, much of the area around Kingseat was still under development. As such, landscaping was outstanding on many areas which appeared as natural/semi-natural open





space. Kingseat is a designed landscape dating from 1895-1905, with conservation area status; as such shelter belts and trees may need to be managed to maturity, and where necessary replaced. A re-assessment of this area will be appropriate on reviewing the Open Space Strategy and audit.



Reproduced from the Ordnance Survey mapping with the permission of the Controller of Her Majesty's Stationery Office.
©Crown copyright. Unauthorised reproduction infringes copyright and may lead to prosecution or civil proceedings.
Licence No: 0100020767.

26 March 2010

Aberdeenshire Council

Scale - 1:6500

Newmachar



- | | | |
|---|---|---|
| ■ Public Parks and Gardens | ■ Schools/Institutions | ■ Amenity Areas |
| ■ Play Space | ■ Sports Areas | ■ Green Corridors/Riparian Routes |
| ■ Semi Natural Areas | ■ Allotments | ■ Churchyards, Cemeteries |
| ■ Other Functional Greenspace | | |

Open Space Audit Update 2019: Newmachar

An update exercise was carried out in 2019 to account for new open spaces arising from major developments completed since the Open Space Audit 2010, and to address any known disparities/gaps in information. The scope of the update exercise did not include a review of the Open Space Audit 2010. The Audit update 2019 has been used to assist in the preparation of the Proposed Aberdeenshire Local Development Plan 2020.

This is an interim Audit. Whilst this information will feed into a future comprehensive Open Space Audit, at this stage there may be some auditing inconsistencies across settlements due to factors such as community interest, and landscape/topography influencing how open spaces are identified, particularly at and around the edges of settlement.

Allotments are excluded as these are audited separately as part of the Food Growing Strategy 2019-2030.

There are no updates to the Open Space Audit 2010.