

Settlement Summary: Peterhead

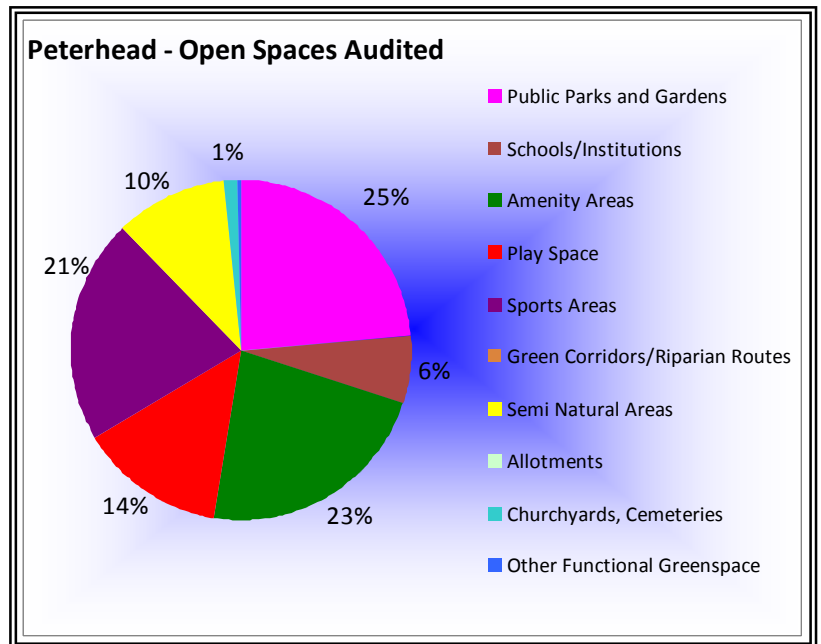
Population: 17891

Observations (of Community Council)

None received

Green Network Links

The built up area of Peterhead is served by an extensive area of pedestrian/cycle routes, identified in the Core Paths Plan. As well as these, two long distance routes converge here: the Coastal trail, and the Formartine and Buchan Way, with the latter extensively used within the town.



Nearly all routes have green margins, providing scope for habitat links, as well as non-motorised access. The area of Collieburn Park provides a valuable green network north from Asda, to the area of Waterside. Any further development to the south could maximise the benefits of this by extending the green corridor around the town. Not surprisingly, Peterhead is found to have a high proportion of green corridors (6%) compared to the Aberdeenshire average of just over 1%.

Open Space Requirements

Peterhead has a relatively equal spread of open space types, although within this, a high proportion of sports areas is revealed (21%), compared to Aberdeenshire's average of 13%; by contrast, the amount of semi-natural greenspace is low, at 19%, as against the Aberdeenshire average of 43%.

In order to enhance biodiversity in the town, there may be scope for considering some alteration to maintenance regimes on selected sites.

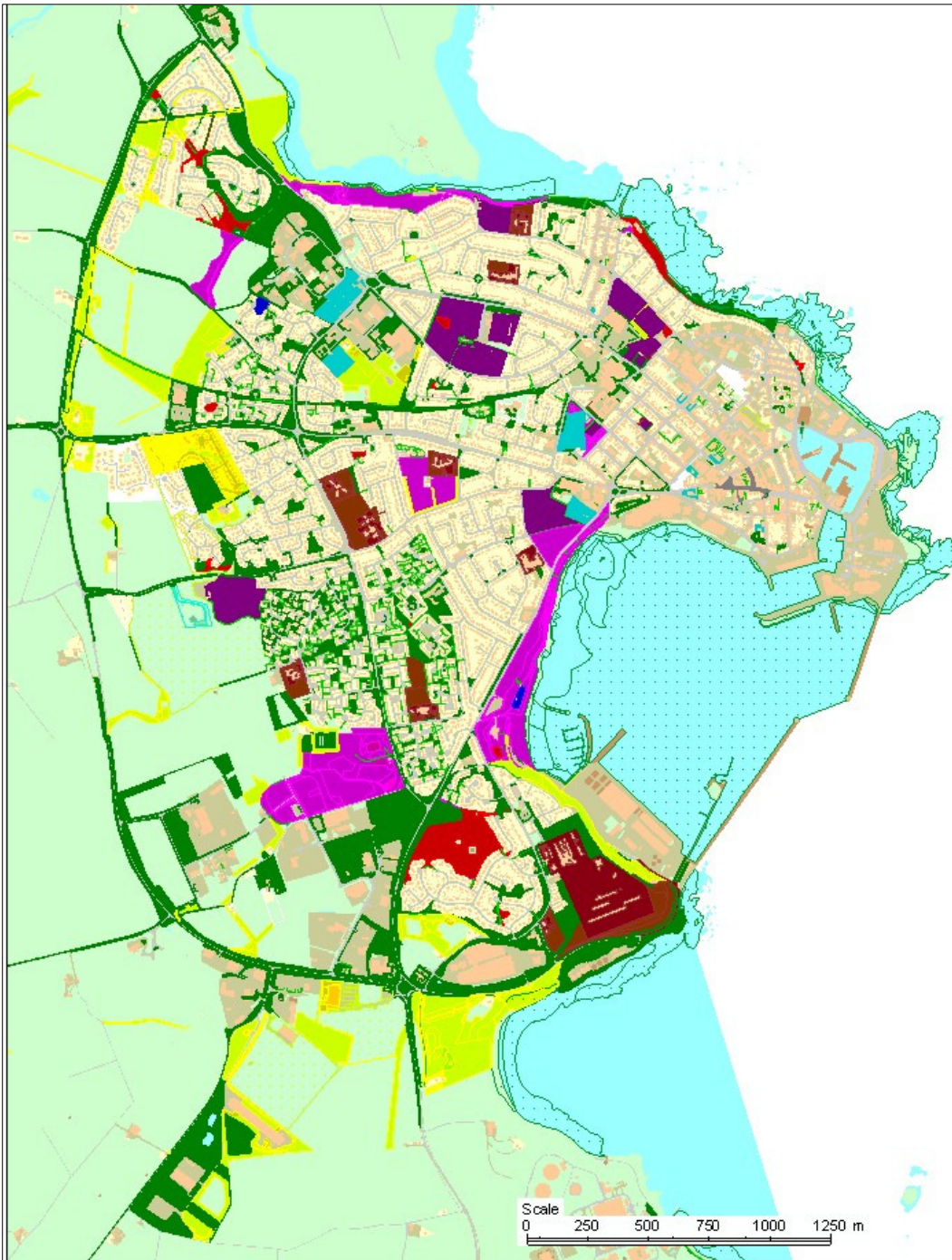
Key recommendations made by auditors include the following:

- Formal path provision at Gordon Terrace
- Repair of facilities and formal path provision at Tower Hill Play Park
- Facilities for wider range of activities at Golf Road playing field.
- Formal path provision at Crossfolds Crescent semi-natural area
- Site management at Forman Drive semi natural greenspace
- Provision of disabled access at cemetery

Given the large number of sites in Peterhead, recommendations were numerous, with those listed above thought to be amongst the priorities. Many more minor suggestions (not shown here) refer

to increased planting, along with the provision of seating, repairs to facilities or increased facilities across a range of sites. However, as is the case across Aberdeenshire, such recommendations are best considered in the context of local feedback.

Should residents identify a specific issue in their area, they would be encouraged to contact their local Landscape Office, who should be able to advise further on particular sites with reference to the detailed audit, as well as potential ways of meeting community aspirations.



Reproduced from the Ordnance Survey mapping with the permission of the Controller of Her Majesty's Stationery Office.
© Crown copyright. Unauthorised reproduction infringes copyright and may lead to prosecution or civil proceedings.
Licence No: 0100020767.

26 April 2010

Aberdeenshire Council

Scale - 1:21297

Peterhead



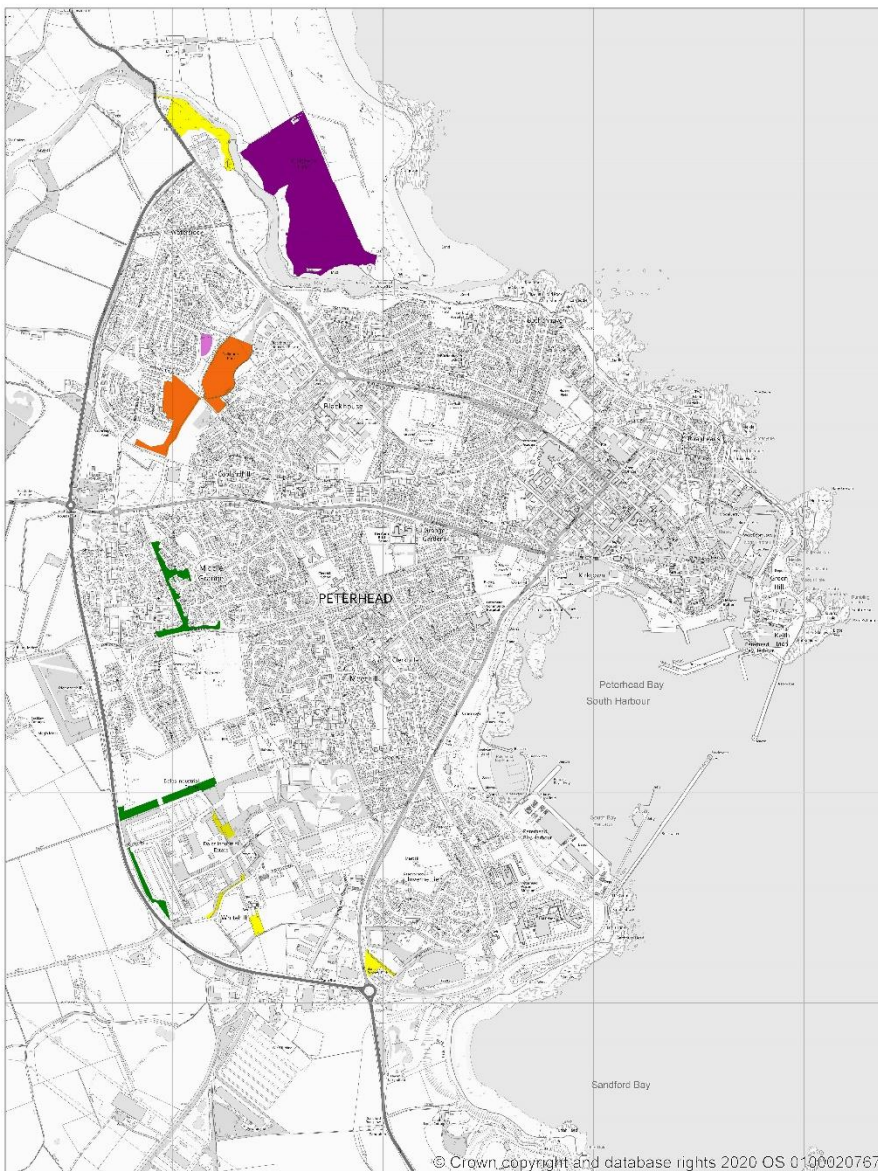
- | | | |
|---|---|---|
| ■ Public Parks and Gardens | ■ Schools/Institutions | ■ Amenity Areas |
| ■ Play Space | ■ Sports Areas | ■ Green Corridors/Riparian Routes |
| ■ Semi Natural Areas | ■ Allotments | ■ Churchyards, Cemeteries |
| ■ Other Functional Greenspace | | |

Open Space Audit Update 2019: Peterhead

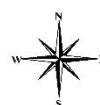
An update exercise was carried out in 2019 to account for new open spaces arising from major developments completed since the Open Space Audit 2010, and to address any known disparities/gaps in information. The scope of the update exercise did not include a review of the Open Space Audit 2010. The Audit update 2019 has been used to assist in the preparation of the Proposed Aberdeenshire Local Development Plan 2020.

This is an interim Audit. Whilst this information will feed into a future comprehensive Open Space Audit, at this stage there may be some auditing inconsistencies across settlements due to factors such as community interest, and landscape/topography influencing how open spaces are identified, particularly at and around the edges of settlement.

Allotments are excluded as these are audited separately as part of the Food Growing Strategy 2019-2030.



500 m
700 yd



- | | | |
|---|---|---|
| ■ Public Parks and Gardens | ■ Schools/Institutions | ■ Amenity Areas |
| ■ Play Space | ■ Sports Areas | ■ Green Corridors/Riparian Routes |
| ■ Semi Natural Areas | ■ Allotments | ■ Churchyards, Cemeteries |
| ■ Other Functional Greenspace | | |