

### Strategic Landscape Capacity Assessment for Wind Energy in Aberdeenshire

March 2014

7933\_ABS\_102

#### Legend

- Study Area
- Study Area 30km Buffer
- Scottish Local Authority Boundaries
- Landscape Character Type / Area Boundary (see Table 3.1 for list)
- Lochs
- Settlements

#### Elevation

- 1100 - 1200m AOD
- 1000 - 1100m AOD
- 900 - 1000m AOD
- 800 - 900m AOD
- 700 - 800m AOD
- 600 - 700m AOD
- 500 - 600m AOD
- 400 - 500m AOD
- 300 - 400m AOD
- 200 - 300m AOD
- 100 - 200m AOD
- 0 - 100m AOD

Landscape Character Types and Areas	
<b>1. Agricultural Heartland</b>	
(i)	Knockhill and Aberchirder
(ii)	Agricultural Heartland
(iii)	Wooded Estates Around Old Deer
(iv)	Upland Ridges South of the Deveron
(v)	Northern Rolling Lowlands
(vi)	Ythan Strath Farmland
(vii)	Insch Basin
(viii)	Formartine Lowlands
(ix)	Central Wooded Estates
(x)	Howe of Alford
(xi)	Cromar Farmlands
(xii)	Howe of Cromar
(xiii)	Kincardine Plateau
(xiv)	Garvock and Glenberrie
(xv)	Howe of the Mearns
<b>7. Coastal Farmland</b>	
(i)	Eastern Coastal Agricultural Plain
(ii)	Western Coastal Farmland
(iii)	North East Coastal Farmland
(iv)	Sandstone Ridges and Valleys South of Troup
(v)	Coastal Farmland East of Macduff
<b>9. Coastal Strip</b>	
(i)	Kincardine Cliffs
(ii)	Formartine Links and Dunes
(iii)	Kincardine Links
<b>11. Farmed Moorland Edge</b>	
(i)	Lumsden Valley
(ii)	The Cromar Uplands
(iii)	Daugh of Cairnborrow
<b>22. Moorland Plateaux</b>	
(i)	Grampian Outliers
(ii)	The Mounth
(iii)	The North-eastern Hill Ranges
<b>24. River Valleys</b>	
(i)	Deveron and Upper Ythan Valleys
<b>25. Straths and Valleys</b>	
(i)	Deveron and Bogie Straths
(ii)	Deeside
(iii)	Donside
(iv)	Upper Deeside Estates
(v)	Muir of Dinnet
<b>26. The Coast</b>	
(i)	Cliffs of the North and South East Coasts
(ii)	Dunes and Beaches from Fraserburgh to Peterhead

**Figure 3.3**  
Topography



This map is reproduced from Ordnance Survey material with the permission of Ordnance Survey on behalf of the Controller of Her Majesty's Stationary Office © Crown Copyright 2014. Unauthorised reproduction infringes Crown copyright and may lead to prosecution or civil proceedings. AL100017966



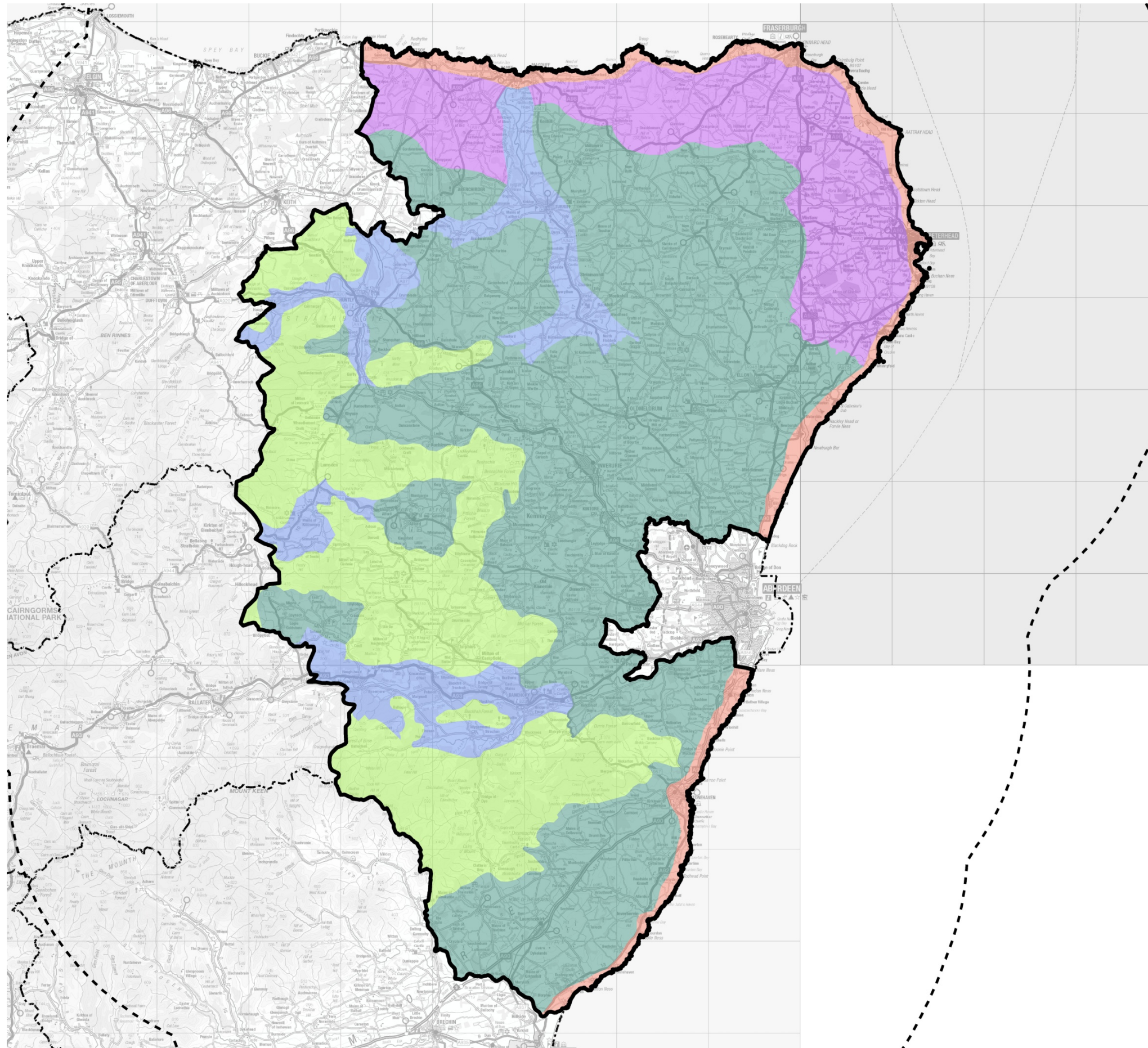
**Strategic Landscape Capacity  
Assessment for Wind Energy  
in Aberdeenshire**

March 2014

7933\_ABS\_103

**Legend**

-  Study Area
-  Study Area 30km Buffer
-  Scottish Local Authority Boundaries
-  Agricultural Heartland
-  Coastal Farmland
-  Coast
-  Moorland
-  Straths and River Valleys



**Figure 3.4**  
**Regional Landscape  
Character Types**



This map is reproduced from Ordnance Survey material with the permission of Ordnance Survey on behalf of the Controller of Her Majesty's Stationary Office © Crown Copyright 2014. Unauthorised reproduction infringes Crown copyright and may lead to prosecution or civil proceedings. AL100017966

### Strategic Landscape Capacity Assessment for Wind Energy in Aberdeenshire

March 2014

7933\_ABS\_104

**Legend**

- Study Area
- Study Area 30km Buffer
- Scottish Local Authority Boundaries
- Landscape Character Type / Area Boundary (see Table 3.1 for list)

**1, Agricultural Heartland**

- 1 (i) Knockhill and Aberchirder
- 1 (ii) Agricultural Heartland
- 1 (iii) Wooded Estates Around Old Deer
- 1 (iv) Upland Ridges South of the Deveron
- 1 (v) Northern Rolling Lowlands
- 1 (vi) Ythan Strath Farmland
- 1 (vii) Insh Basin
- 1 (viii) Formartine Lowlands
- 1 (ix) Central Wooded Estates
- 1 (x) Howe of Alford
- 1 (xi) Cromar Farmlands
- 1 (xii) Howe of Cromar
- 1 (xiii) Kincardine Plateau
- 1 (xiv) Garvock and Glenbervie
- 1 (xv) Howe of the Mearns

**7, Coastal Farmland**

- 7 (i) Eastern Coastal Agricultural Plain
- 7 (ii) Western Coastal Farmland
- 7 (iii) North East Coastal Farmland
- 7 (iv) Sandstone Ridges and Valleys South of Troup
- 7 (v) Coastal Farmland East of Macduff

**9, Coastal Strip**

- 9 (i) Kincardine Cliffs
- 9 (ii) Formartine Links and Dunes
- 9 (iii) Kincardine Links

**11, Farmed Moorland Edge**

- 11 (i) The Cromar Uplands
- 11 (ii) Daugh of Cairnborrow
- 11 (iii) Lumsden Valley

**22, Moorland Plateaux**

- 22 (ii) Grampian Outliers
- 22 (iii) The Mounth
- 22 (iii) The North-eastern Hill Ranges

**24, River Valleys**

- 24 (i) Deveron and Upper Ythan Valleys

**25, Straths and Valleys**

- 25 (i) Deveron and Bogie Straths
- 25 (ii) Deeside
- 25 (iii) Donside
- 25 (iv) Upper Deeside Estates
- 25 (v) Upper Deeside Estates

**26, The Coast**

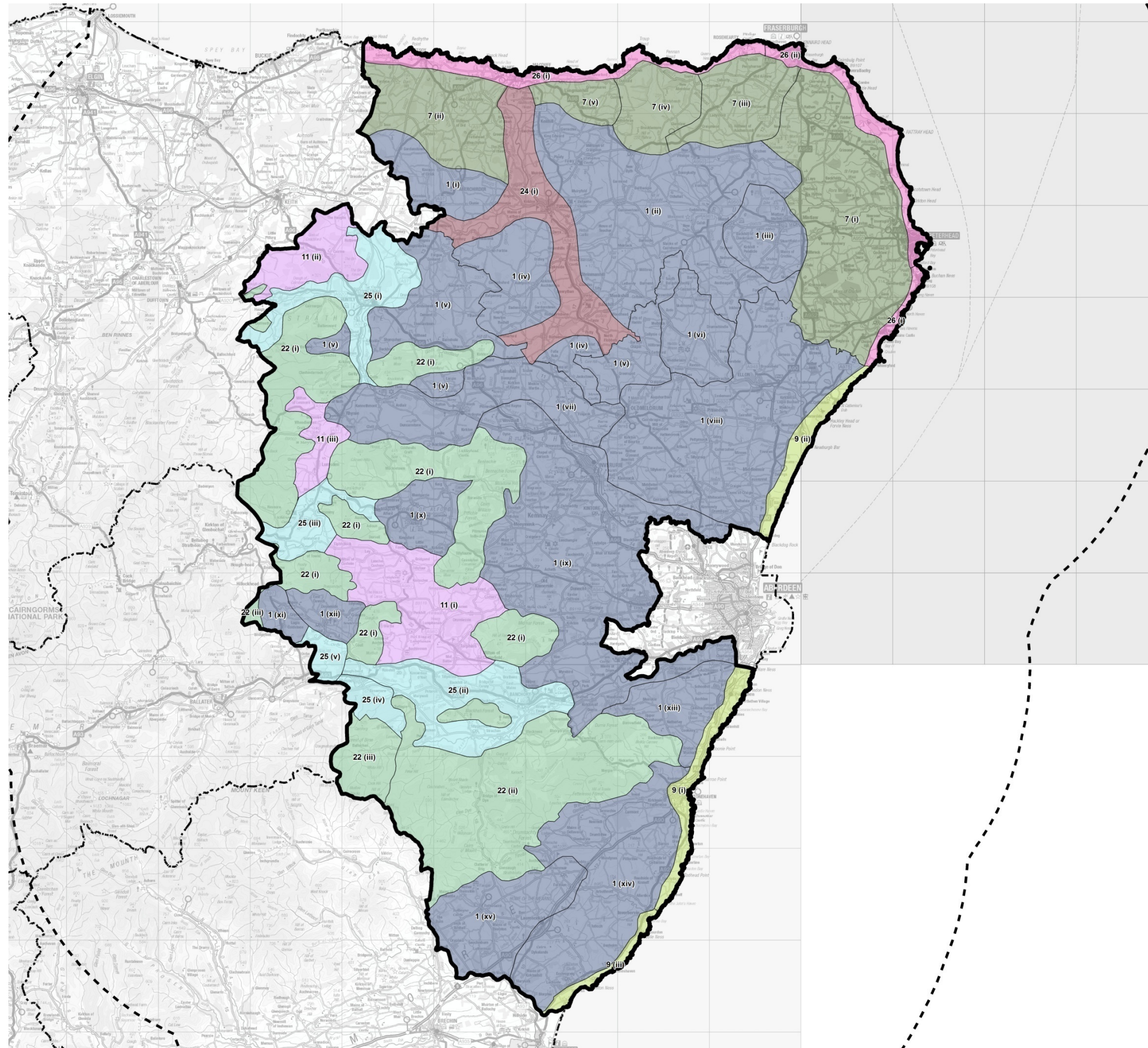
- 26 (i) Cliffs of the North and South East Coasts
- 26 (ii) Dunes and Beaches from Fraserburgh to Peterhead

**Figure 3.5a**

### Landscape Character Types and Areas in Aberdeenshire



This map is reproduced from Ordnance Survey material with the permission of Ordnance Survey on behalf of the Controller of Her Majesty's Stationary Office © Crown Copyright 2014. Unauthorised reproduction infringes Crown copyright and may lead to prosecution or civil proceedings. AL100017966



### Strategic Landscape Capacity Assessment for Wind Energy in Aberdeenshire

March 2014

7933\_ABS\_105

**Legend**

- Study Area
- Study Area 30km Buffer
- Scottish Local Authority Boundaries
- Landscape Character Type / Area Boundary (see Table 3.1 for list)

**1, Agricultural Heartland**

- 1 (i) Knockhill and Aberchirder
- 1 (ii) Agricultural Heartland
- 1 (iii) Wooded Estates Around Old Deer
- 1 (iv) Upland Ridges South of the Deveron
- 1 (v) Northern Rolling Lowlands
- 1 (vi) Ythan Strath Farmland
- 1 (vii) Insh Basin
- 1 (viii) Formartine Lowlands
- 1 (ix) Central Wooded Estates
- 1 (x) Howe of Alford
- 1 (xi) Cromar Farmlands
- 1 (xii) Howe of Cromar
- 1 (xiii) Kincardine Plateau
- 1 (xiv) Garvock and Glenberrie
- 1 (xv) Howe of the Mearns

**7, Coastal Farmland**

- 7 (i) Eastern Coastal Agricultural Plain
- 7 (ii) Western Coastal Farmland
- 7 (iii) North East Coastal Farmland
- 7 (iv) Sandstone Ridges and Valleys South of Troup
- 7 (v) Coastal Farmland East of Macduff

**9, Coastal Strip**

- 9 (i) Kincardine Cliffs
- 9 (ii) Formartine Links and Dunes
- 9 (iii) Kincardine Links

**11, Farmed Moorland Edge**

- 11 (i) The Cromar Uplands
- 11 (ii) Daugh of Cairnborrow
- 11 (iii) Lumsden Valley

**22, Moorland Plateaux**

- 22 (ii) Grampian Outliers
- 22 (iii) The Mounth
- 22 (iii) The North-eastern Hill Ranges

**24, River Valleys**

- 24 (i) Deveron and Upper Ythan Valleys

**25, Straths and Valleys**

- 25 (i) Deveron and Bogie Straths
- 25 (ii) Deeside
- 25 (iii) Donside
- 25 (iv) Upper Deeside Estates
- 25 (v) Upper Deeside Estates

**26, The Coast**

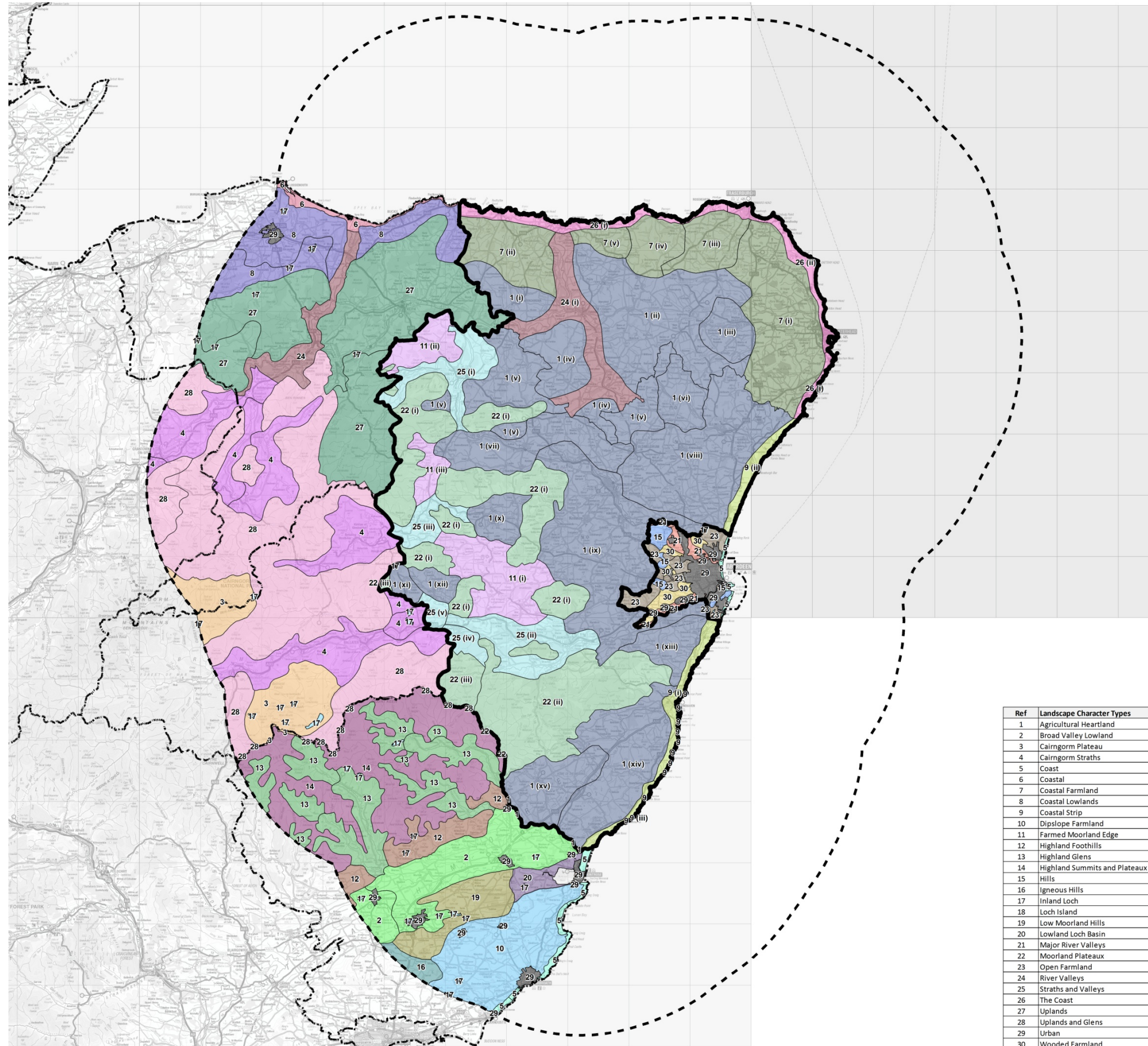
- 26 (i) Cliffs of the North and South East Coasts
- 26 (ii) Dunes and Beaches from Fraserburgh to Peterhead

**Figure 3.5b**

### Landscape Character Types and Areas in Study Area



This map is reproduced from Ordnance Survey material with the permission of Ordnance Survey on behalf of the Controller of Her Majesty's Stationary Office © Crown Copyright 2014. Unauthorised reproduction infringes Crown copyright and may lead to prosecution or civil proceedings. AL100017966



Ref	Landscape Character Types
1	Agricultural Heartland
2	Broad Valley Lowland
3	Cairngorm Plateau
4	Cairngorm Straths
5	Coast
6	Coastal
7	Coastal Farmland
8	Coastal Lowlands
9	Coastal Strip
10	Dipslope Farmland
11	Farmed Moorland Edge
12	Highland Foothills
13	Highland Glens
14	Highland Summits and Plateaux
15	Hills
16	Igneous Hills
17	Inland Loch
18	Loch Island
19	Low Moorland Hills
20	Lowland Loch Basin
21	Major River Valleys
22	Moorland Plateaux
23	Open Farmland
24	River Valleys
25	Straths and Valleys
26	The Coast
27	Uplands
28	Uplands and Glens
29	Urban
30	Wooded Farmland