

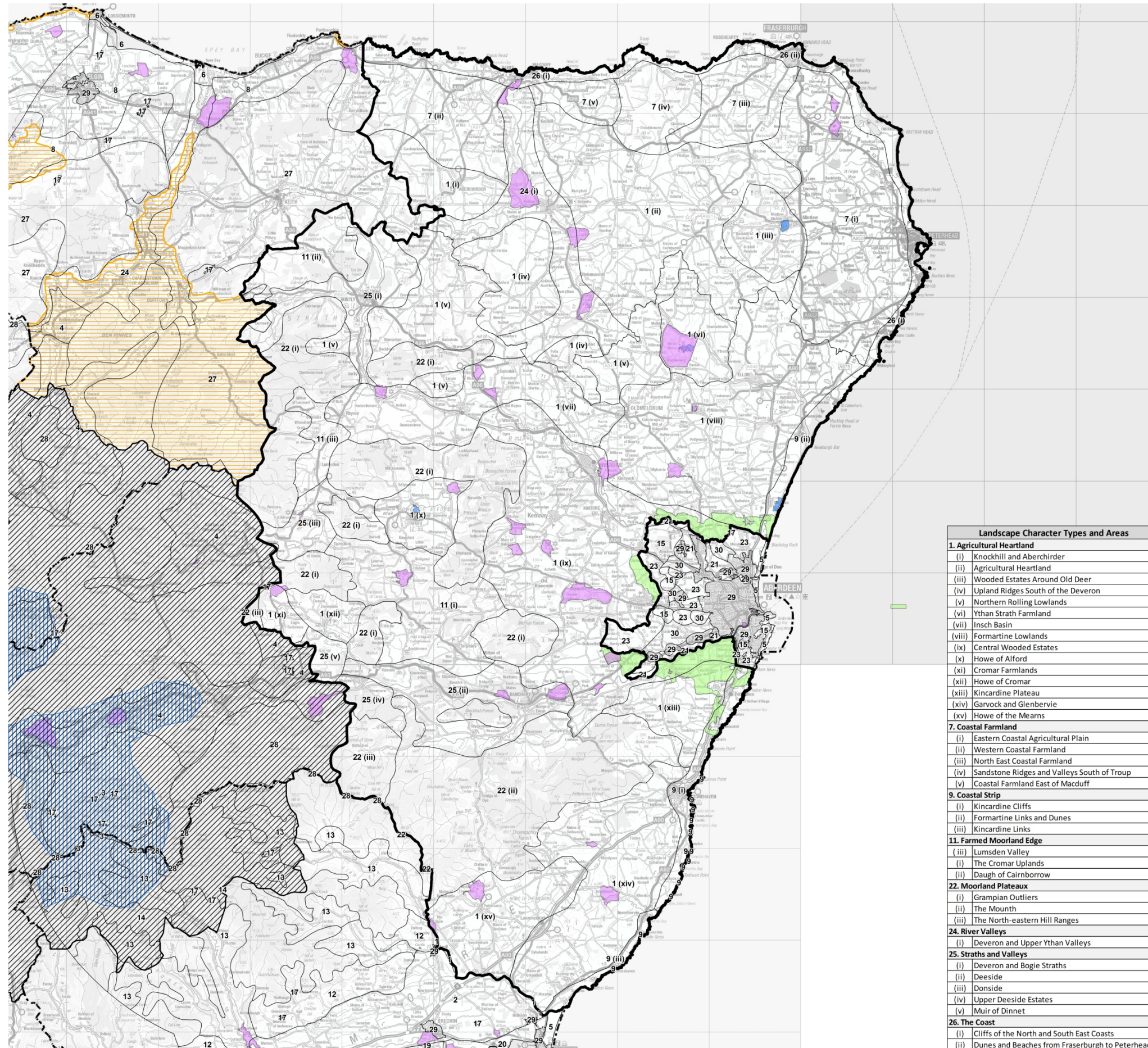
### Strategic Landscape Capacity Assessment for Wind Energy in Aberdeenshire

March 2014

7933\_ABS\_106

#### Legend

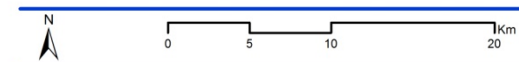
- Study Area
- Scottish Local Authority Boundaries
- Landscape Character Type / Area Boundary (see Table 3.1 for list)
- Cairngorms National Park
- National Scenic Area
- Areas of Great Landscape Value
- Gardens and Designed Landscapes
- Greenbelt
- Country Parks



Landscape Character Types and Areas	
<b>1. Agricultural Heartland</b>	
(i)	Knockhill and Aberchirder
(ii)	Agricultural Heartland
(iii)	Wooded Estates Around Old Deer
(iv)	Upland Ridges South of the Deveron
(v)	Northern Rolling Lowlands
(vi)	Ythan Strath Farmland
(vii)	Insch Basin
(viii)	Formartine Lowlands
(ix)	Central Wooded Estates
(x)	Howe of Alford
(xi)	Cromar Farmlands
(xii)	Howe of Cromar
(xiii)	Kincardine Plateau
(xiv)	Garvock and Glenberrie
(xv)	Howe of the Mearns
<b>7. Coastal Farmland</b>	
(i)	Eastern Coastal Agricultural Plain
(ii)	Western Coastal Farmland
(iii)	North East Coastal Farmland
(iv)	Sandstone Ridges and Valleys South of Troup
(v)	Coastal Farmland East of Macduff
<b>9. Coastal Strip</b>	
(i)	Kincardine Cliffs
(ii)	Formartine Links and Dunes
(iii)	Kincardine Links
<b>11. Farmed Moorland Edge</b>	
(i)	Lumsden Valley
(ii)	The Cromar Uplands
(iii)	Daugh of Cairnborrow
<b>22. Moorland Plateaux</b>	
(i)	Grampian Outliers
(ii)	The Mounth
(iii)	The North-eastern Hill Ranges
<b>24. River Valleys</b>	
(i)	Deveron and Upper Ythan Valleys
<b>25. Straths and Valleys</b>	
(i)	Deveron and Bogie Straths
(ii)	Deeside
(iii)	Donside
(iv)	Upper Deeside Estates
(v)	Muir of Dinnet
<b>26. The Coast</b>	
(i)	Cliffs of the North and South East Coasts
(ii)	Dunes and Beaches from Fraserburgh to Peterhead

Figure 3.6

### Landscape Designations & Landscape Character Areas



This map is reproduced from Ordnance Survey material with the permission of Ordnance Survey on behalf of the Controller of Her Majesty's Stationary Office © Crown Copyright 2014. Unauthorised reproduction infringes Crown copyright and may lead to prosecution or civil proceedings. AL100017966

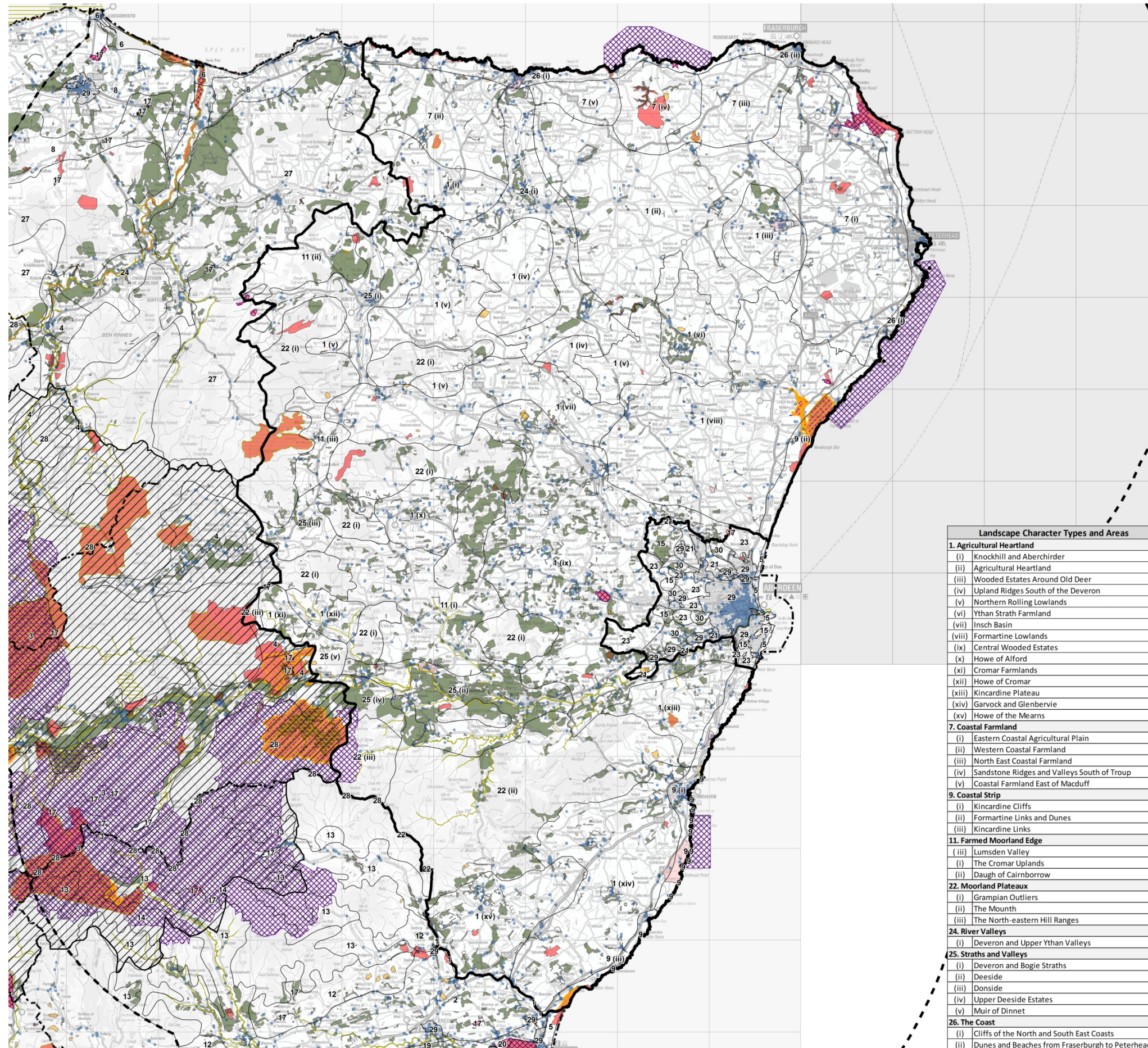
### Strategic Landscape Capacity Assessment for Wind Energy in Aberdeenshire

March 2014

7933\_ABS\_107

#### Legend

- Study Area
- Study Area 30km Buffer
- Scottish Local Authority Boundaries
- Landscape Character Type / Area Boundary (see Table 3.1 for list)
- Listed Buildings
- Cairngorms National Park
- National Nature Reserves
- Special Areas of Conservation
- Special Protection Area
- Aberdeenshire Conservation Areas
- Scheduled Ancient Monuments
- Ancient Woodland Inventory
- Sites of Special Scientific Interest



Landscape Character Types and Areas	
<b>1. Agricultural Heartland</b>	
(i)	Knockhill and Aberchirder
(ii)	Agricultural Heartland
(iii)	Wooded Estates Around Old Deer
(iv)	Upland Ridges South of the Deveron
(v)	Northern Rolling Lowlands
(vi)	Ythan Strath Farmland
(vii)	Insch Basin
(viii)	Formartine Lowlands
(ix)	Central Wooded Estates
(x)	Howe of Alford
(xi)	Cromar Farmlands
(xii)	Howe of Cromar
(xiii)	Kincardine Plateau
(xiv)	Garvock and Glenberrie
(xv)	Howe of the Mearns
<b>7. Coastal Farmland</b>	
(i)	Eastern Coastal Agricultural Plain
(ii)	Western Coastal Farmland
(iii)	North East Coastal Farmland
(iv)	Sandstone Ridges and Valleys South of Troup
(v)	Coastal Farmland East of Macduff
<b>9. Coastal Strip</b>	
(i)	Kincardine Cliffs
(ii)	Formartine Links and Dunes
(iii)	Kincardine Links
<b>11. Farmed Moorland Edge</b>	
(i)	Lumsden Valley
(ii)	The Cromar Uplands
(iii)	Daugh of Cairnborrow
<b>22. Moorland Plateaux</b>	
(i)	Grampian Outliers
(ii)	The Mounth
(iii)	The North-eastern Hill Ranges
<b>24. River Valleys</b>	
(i)	Deveron and Upper Ythan Valleys
<b>25. Straths and Valleys</b>	
(i)	Deveron and Bogie Straths
(ii)	Deeside
(iii)	Donside
(iv)	Upper Deeside Estates
(v)	Muir of Dinnet
<b>26. The Coast</b>	
(i)	Cliffs of the North and South East Coasts
(ii)	Dunes and Beaches from Fraserburgh to Peterhead

**Figure 3.7**  
National and Regional Nature Conservation and Historic Designations



This map is reproduced from Ordnance Survey material with the permission of Ordnance Survey on behalf of the Controller of Her Majesty's Stationary Office © Crown Copyright 2014. Unauthorised reproduction infringes Crown copyright and may lead to prosecution or civil proceedings. AL100017966

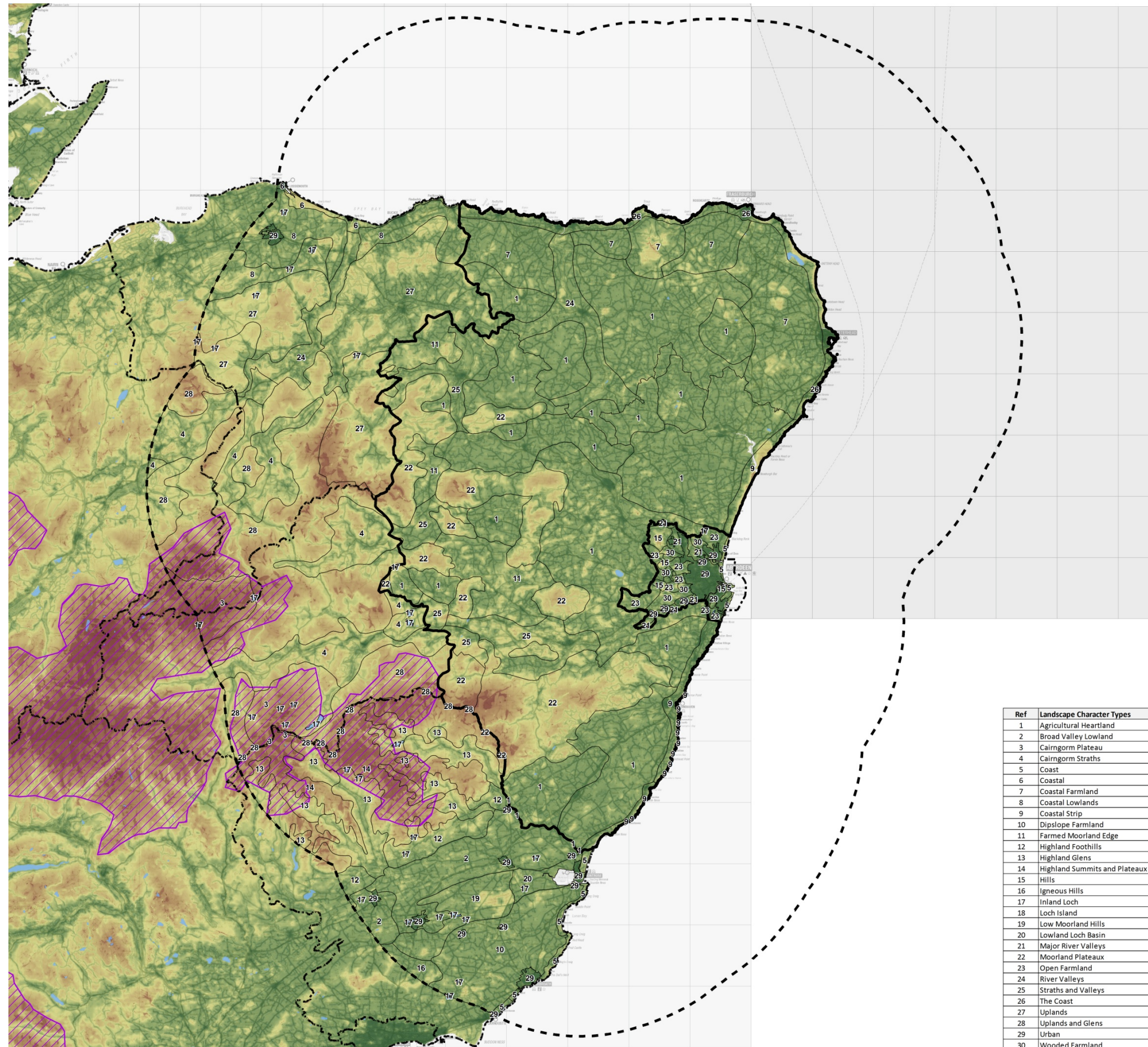
### Strategic Landscape Capacity Assessment for Wind Energy in Aberdeenshire

March 2014

7933\_ABS\_108

#### Legend

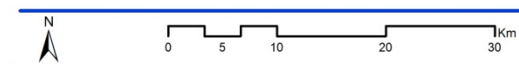
- Study Area
  - Study Area 30km Buffer
  - Scottish Local Authority Boundaries
  - Landscape Character Type / Area Boundary (see Table 3.1 for list)
  - Core Areas of Wild Land
  - Lochs
- Level of Wildness**
- High
  - Low



Ref	Landscape Character Types
1	Agricultural Heartland
2	Broad Valley Lowland
3	Cairngorm Plateau
4	Cairngorm Straths
5	Coast
6	Coastal
7	Coastal Farmland
8	Coastal Lowlands
9	Coastal Strip
10	Dipslope Farmland
11	Farmed Moorland Edge
12	Highland Foothills
13	Highland Glens
14	Highland Summits and Plateaux
15	Hills
16	Igneous Hills
17	Inland Loch
18	Loch Island
19	Low Moorland Hills
20	Lowland Loch Basin
21	Major River Valleys
22	Moorland Plateaux
23	Open Farmland
24	River Valleys
25	Straths and Valleys
26	The Coast
27	Uplands
28	Uplands and Glens
29	Urban
30	Wooded Farmland

**Figure 3.8**

### Scottish Wildness and Core Areas of Wild Land



This map is reproduced from Ordnance Survey material with the permission of Ordnance Survey on behalf of the Controller of Her Majesty's Stationary Office © Crown Copyright 2014. Unauthorised reproduction infringes Crown copyright and may lead to prosecution or civil proceedings. AL100017966

# Strategic Landscape Capacity Assessment for Wind Energy in Aberdeenshire

March 2014

7933 ABS 109

## Legend

- Study Area
  - Study Area 30km Buffer
  - Scottish Local Authority Boundaries
  - Landscape Character Type / Area Boundary (see Table 3.1 for list)
  - Cairngorms National Park
- ### Locations of Landscape / Recreational Interest
- Castles and Country Homes
  - Golf Courses
  - Nature Centres and Reserves
  - Parks and Gardens
  - Visitor Attraction
  - Viewpoints
  - Additional Viewpoints
  - Cycle Routes
  - Long Distance Footpaths
  - Country Parks

- ### Golf Courses
- 88 Buckpool Golf Club
  - 89 Strathlene Buckie Golf Club
  - 90 Duff House Royal Golf Club
  - 91 Royal Tarlair Golf Club
  - 92 Rosehearty Golf Course
  - 93 Dunes Golf Centre
  - 94 Inverallochy Golf Course
  - 95 Peterhead New Golf Course
  - 96 Longside Golf Club
  - 97 Turnfyll Golf Club
  - 98 Huntly Golf Club
  - 99 Inshach Golf Club
  - 100 Fyvie Golf Course
  - 101 Cruden Bay, St Olafs Golf Course
  - 102 McDonald Golf Club
  - 103 Newburgh on Ythan Golf Course
  - 104 Meldrum House Golf Course
  - 105 Oldmeldrum Golf Course
  - 106 Gramouth and Kingston Golf Course
  - 107 Spey Bay Golf Course
  - 108 Banochory Golf Club
  - 109 Keith Golf Course
  - 110 Dufftown Golf Course
  - 111 Ballindalloch Castle Golf Course
  - 112 Craggan Golf Course
  - 113 Grantown on Spey Golf Course
  - 114 Inchmarlo Resort and Golf Club
  - 115 Stonehaven Golf Course
  - 116 Auchenclochy Golf Club
  - 117 Montrose Golf Links
  - 118 Guthrie Golf Club
  - 119 Arbroath Golf Course
  - 120 Kirmuir Golf Course
  - 121 Brechin Golf Course
  - 122 Edzell Golf Course
  - 123 Elgin Golf Club
  - 124 Rothes Golf Club
  - 125 Balmie Golf Course
  - 126 Newmachar Golf Club
  - 127 Kintore Golf Club
  - 128 Inverurie Golf Club
  - 129 Kemnay Golf Course
  - 130 Murcher Links Golf Course
  - 131 Royal Aberdeen Golf Course
  - 132 Kings Links Golf Course
  - 133 Balnagask Golf Course
  - 134 Auchmill Golf Course
  - 135 Hazlehead Golf Course
  - 136 Deeside Golf Course
  - 137 Portlethen Golf Club
  - 138 Peterculter Golf Club
  - 139 Westhill Golf Club
  - 140 Crabstone Golf Club
  - 141 Torphins Golf Club
  - 142 Lumphannan Golf Club
  - 143 Aboyne Golf Club
  - 144 Aboyne Loch Golf Club
  - 145 Tarland Golf Club
  - 146 Ballater Golf Club

- ### Viewpoints (additional)
- 23 Lunan Bay - Ethie Haven
  - 24 A92
  - 25 Boddin Point
  - 26 SWT Centre, Montrose Basin
  - 27 Scurdie Ness (lighthouse)
  - 28 Angus Hill lay-by (B1934)
  - 29 Bridge of Dun (Steam Railway Station)
  - 30 NTS House of Dun (setting of and fews from)
  - 31 Unthank / Pitforthie junction (B966)
  - 32 Tangleha
  - 33 Catherhuns (Hill Forts) - White
  - 34 Catherhuns (Hill Forts) - Brown
  - 35 West of Edzell
  - 36 Hill of Wirran
  - 37 Clachmaben
  - 38 Mount Keen
  - 39 Meikle Carewe
  - 40 Hill of Fare
  - 41 Carn Mor
  - 42 NCN1 at Hill of Torryleith
  - 43 Viewpoint at hill of Millmedden
  - 44 The Buck
  - 45 Carn Daimh on Speyside Way
  - 46 Core path at shore at Forvie
  - 47 Bults of Buchan
  - 48 Clashmach Hill
  - 49 Fyvie Castle
  - 50 Junction of NCN1 and Formartine and Buchan Way
  - 51 Lagg Wood
  - 52 Culsh Monument at New Deer
  - 53 Observatory (top of tower) at Forest of Deer
  - 54 The Pole of Illaw
  - 55 Raitay Head
  - 56 Visitor Centre at Strathbeg
  - 57 Windyheads Hill
  - 58 Hill of Doune
  - 59 Dum Hill
  - 60 Bin of Cullen
  - 61 Troup Head
  - 62 Findlater Castle
  - 63 Driesh
  - 64 Mayar
  - 65 Glas Maol
  - 66 Brown Cow Hill

- ### Castles and Country Homes
- 67 Balmoral Castle
  - 68 Duff House, Banff
  - 69 Braemar Castle
  - 70 Cairness House
  - 71 Castle Fraser
  - 72 Corrigriff Castle
  - 73 Craigievar Castle
  - 74 Craithes Castle
  - 75 Kildrumny Castle
  - 76 Craigston Castle
  - 77 Dalgleith Castle
  - 78 Drum Castle
  - 79 Dunottar Castle
  - 80 Fyvie Castle
  - 81 Haddo House
  - 82 Glenbuchat Castle
  - 83 Huntly Castle
  - 84 Kindrocht Castle
  - 85 Leith Hall
  - 86 Princes Castle
  - 87 Tolquhon Castle

Ref	Landscape Character Types
1	Agricultural Heartland
2	Broad Valley Lowland
3	Cairngorm Plateau
4	Cairngorm Straths
5	Coast
6	Coastal
7	Coastal Farmland
8	Coastal Lowlands
9	Coastal Strip
10	Diplopie Farmland
11	Farmed Moorland Edge
12	Highland Foothills
13	Highland Glens
14	Highland Summits and Plateaux
15	Hills
16	Igneous Hills
17	Inland Loch
18	Loch Island
19	Low Moorland Hills
20	Lowland Loch Basin
21	Major River Valleys
22	Moorland Plateaux
23	Open Farmland
24	River Valleys
25	Straths and Valleys
26	The Coast
27	Uplands
28	Uplands and Glens
29	Urban
30	Wooded Farmland

Figure 3.9

## Key Features of Landscape and Recreational Interest



This map is reproduced from Ordnance Survey material with the permission of Ordnance Survey on behalf of the Controller of Her Majesty's Stationary Office © Crown Copyright 2014. Unauthorised reproduction infringes Crown copyright and may lead to prosecution or civil proceedings. AL100017966

