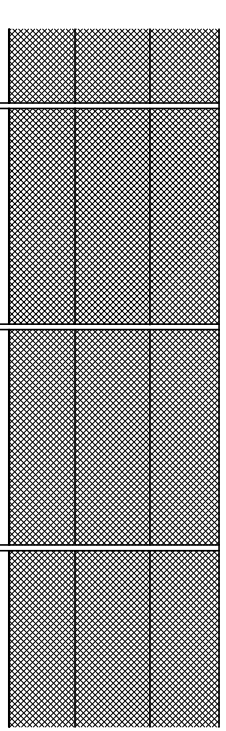
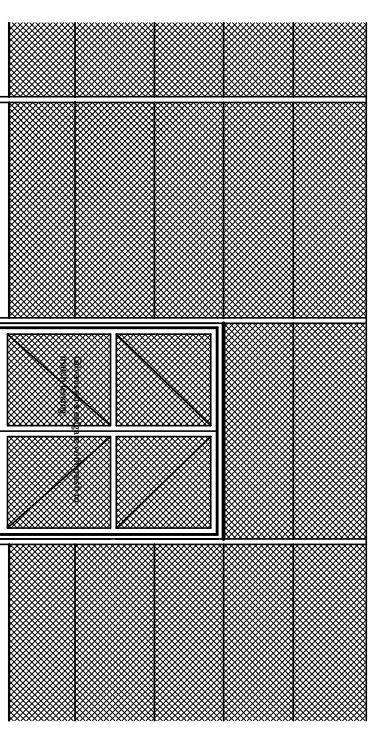
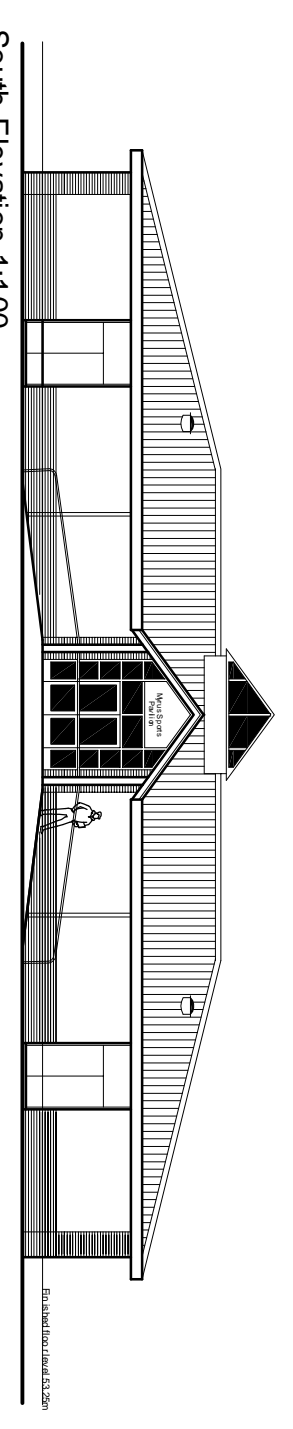


Site Plan Scale 1:500

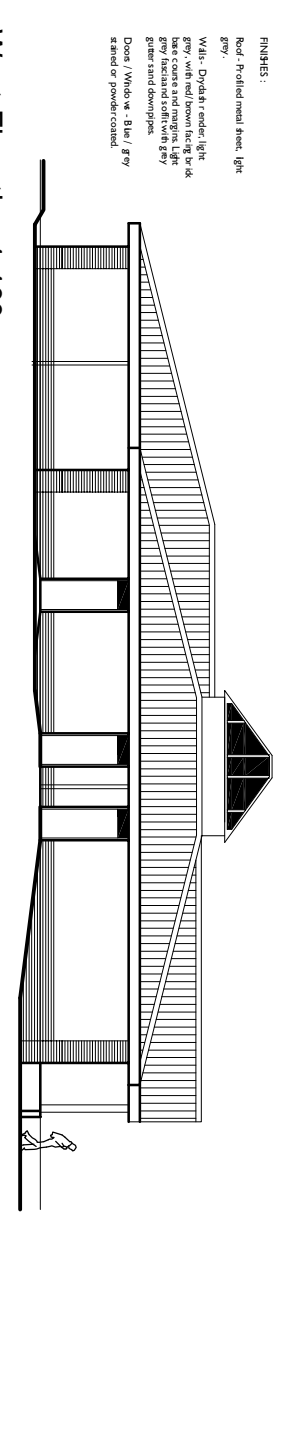


Obtained steel angle piers @ 3.0m centres with bearing walls and 100mm concrete pads.
 Obtained steel mesh with 50x50mm mesh size.
 150mm high stone kerb around paved areas.

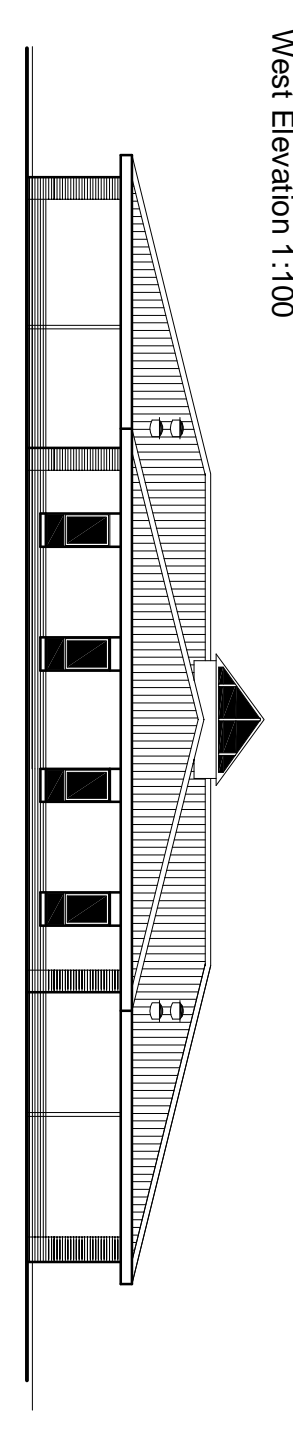
Obtained steel angle piers @ 3.0m centres with bearing walls and 100mm concrete pads.
 Obtained steel mesh with 50x50mm mesh size.
 150mm high stone kerb around paved areas.



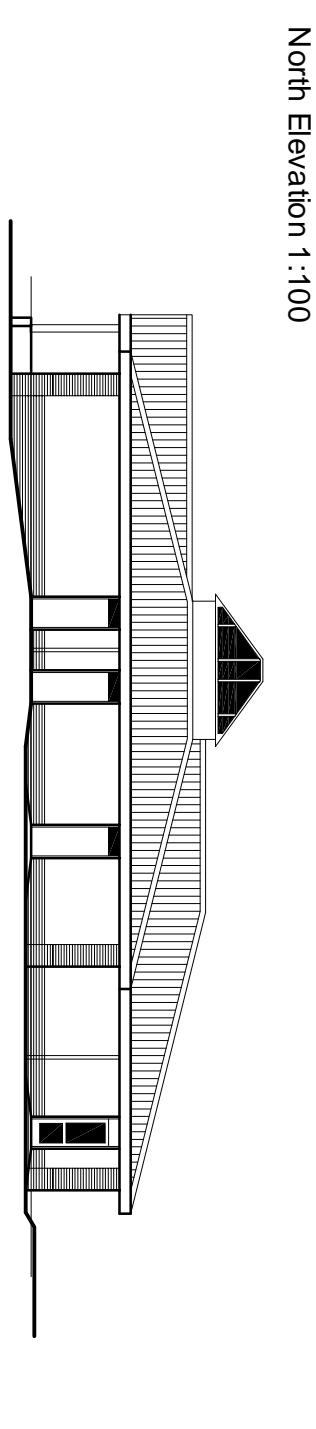
South Elevation 1:100



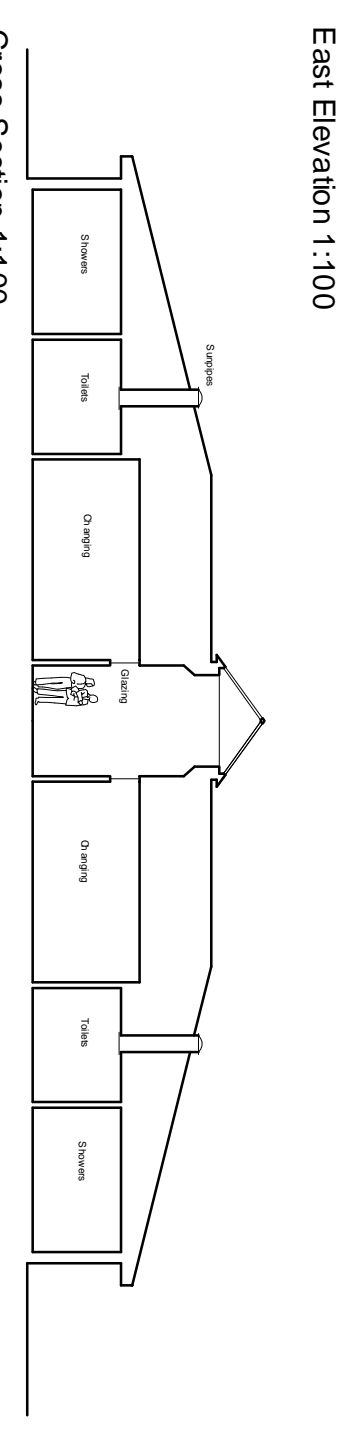
West Elevation 1:100



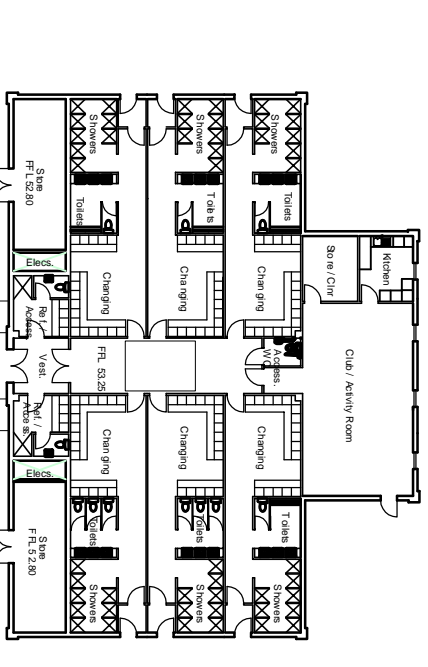
North Elevation 1:100



East Elevation 1:100

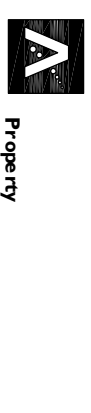


Cross Section 1:100



Floor Plan 1:200

Aberdeenshire
 COUNCIL



Property

The Town House Low Street Banff AB45 1AY Tel: (01261) 813200 Fax: (01261) 812413
 the CANAL PARK FACILITIES RELOCATION - MYRUS SPORTS PAVILION
 the GENERAL ARRANGEMENT

drawing: **AS** date: **5/11/04** drawn by: **SNP** revision: **14964.2.12**
 CONTACT: drawing number: **14964.2.12** revision: **14964.2.12**
 RAYSON MURPHY
 Rayson is part of the Transportation and Infrastructure Service