

Settlement Summary: Aboyne

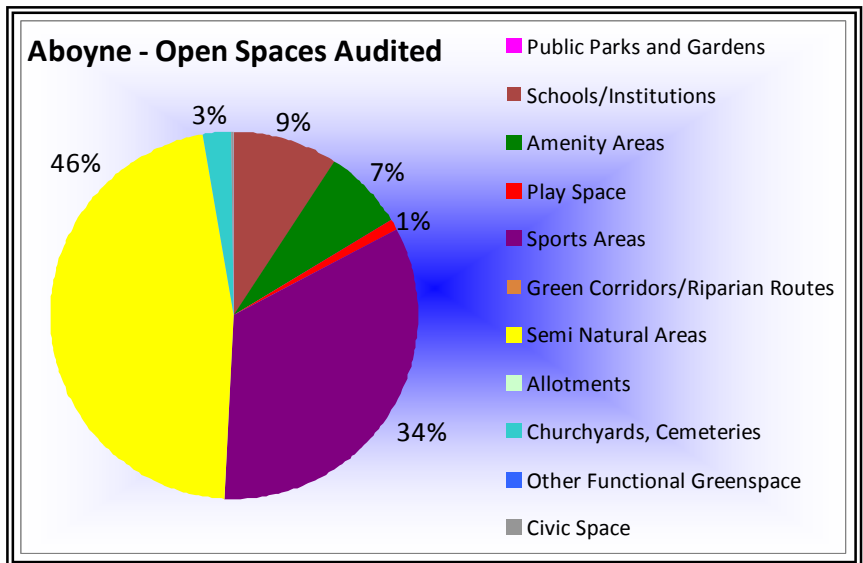
Population: 2378

Observations (of Community Council)

None Received

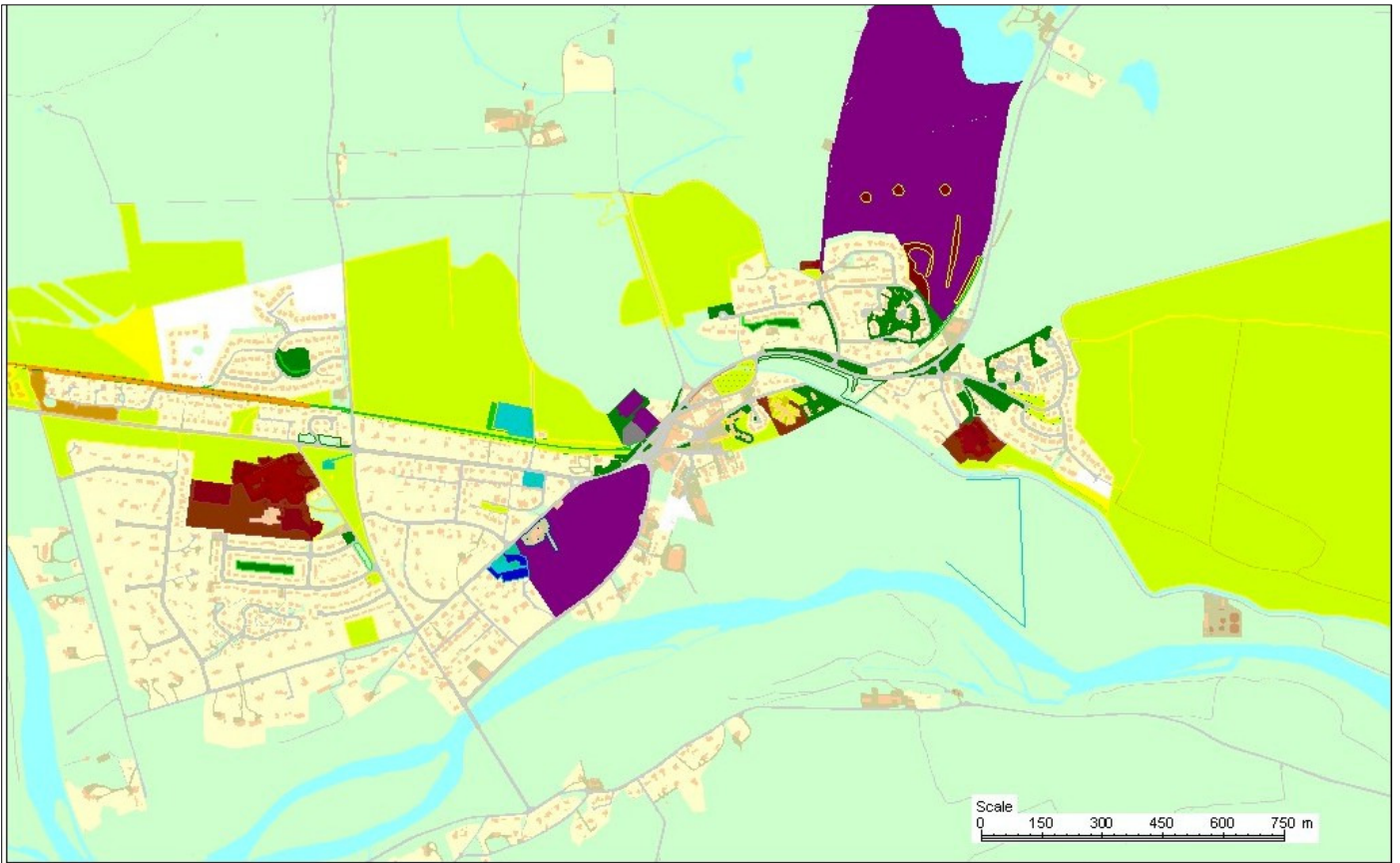
Green Network Links

The quality of linkages varies throughout Aboyne. Within residential areas, the east of the town e.g. Formaston Park and Bellwood Road has better greenspace links than older parts of the town to the west, such as St Eunans Road; however, private gardens play a part in enabling the passage of wildlife and biodiversity. The variation in green space linkages across the town reflects the age and design of the urban form in different areas. A number of path networks within and around the town provide good pedestrian links, such as the riverside pathway. Core paths include the Deeside Way and the Aboyne Castle and Bellwood Circular, all of which are easily accessible from the town. In the event of future development within Aboyne, new green linkages should be created and existing links with greenspace, both within and around the town, should be enhanced and protected.



Open Space Requirements

The audit made several recommendations for the improvement of existing open spaces, as well as for change of use in some cases. The Morven Place/Ladywood Drive amenity grassy area lacks purpose, and auditors suggested that it could be enhanced by the installation of play equipment or conversion to allotments. Any alterations would require further consultation with the local community. At Bellwood Drive, it was suggested that the play area would benefit from installation of a youth shelter and benches. The town park scored very well in terms of usage levels, as well as provision and maintenance of the equipment. The park provides a positive focal point for the town centre. Further suggestions were that the bowling club would benefit from disabled access, and that ornamental planting on the embankment at the approach to the town would provide an attractive and inviting entrance to Aboyne. The installation of benches was recommended for the amenity area between the shopping centre and Bonty Court, and on Ballater Road grassy area.



Reproduced from the Ordnance Survey mapping with the permission of the Controller of Her Majesty's Stationery Office. © Crown copyright.
Unauthorised reproduction infringes copyright and may lead to prosecution or civil proceedings. Licence No: 0100020767.

16 September 2010

Aboyne

Aberdeenshire Council

Scale - 1:12608



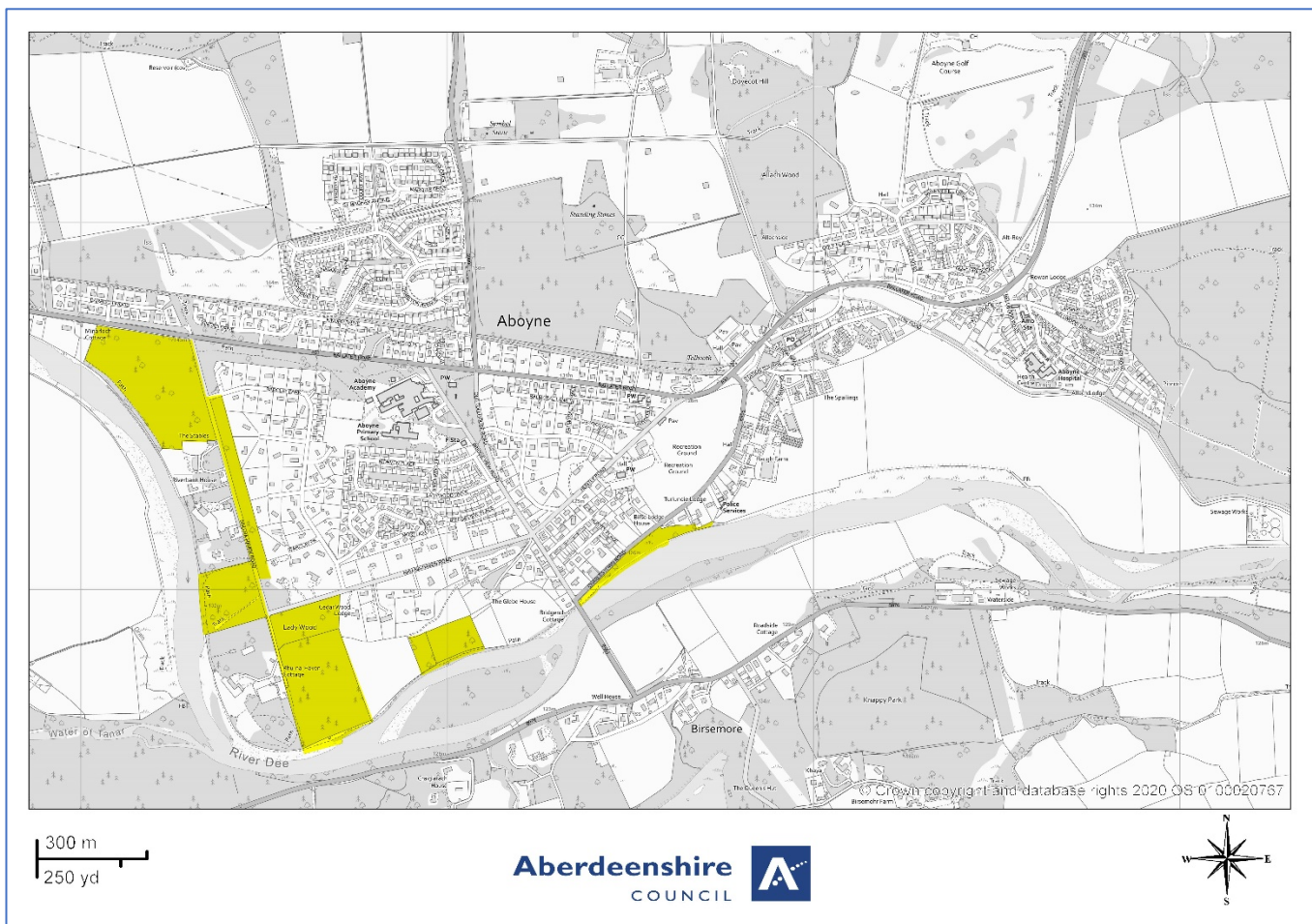
- | | | |
|---|---|---|
| ■ Public Parks and Gardens | ■ Schools/Institutions | ■ Amenity Areas |
| ■ Play Space | ■ Sports Areas | ■ Green Corridors/Riparian Routes |
| ■ Semi Natural Areas | ■ Allotments | ■ Churchyards, Cemeteries |
| ■ Other Functional Greenspace | | |

Open Space Audit Update 2019: Aboyne

An update exercise was carried out in 2019 to account for new open spaces arising from major developments completed since the Open Space Audit 2010, and to address any known disparities/gaps in information. The scope of the update exercise did not include a review of the Open Space Audit 2010. The Audit update 2019 has been used to assist in the preparation of the Proposed Aberdeenshire Local Development Plan 2020.

This is an interim Audit. Whilst this information will feed into a future comprehensive Open Space Audit, at this stage there may be some auditing inconsistencies across settlements due to factors such as community interest, and landscape/topography influencing how open spaces are identified, particularly at and around the edges of settlement.

Allotments are excluded as these are audited separately as part of the Food Growing Strategy 2019-2030.



- | | | |
|---|---|---|
| ■ Public Parks and Gardens | ■ Schools/Institutions | ■ Amenity Areas |
| ■ Play Space | ■ Sports Areas | ■ Green Corridors/Riparian Routes |
| ■ Semi Natural Areas | ■ Allotments | ■ Churchyards, Cemeteries |
| ■ Other Functional Greenspace | | |