

Settlement Summary: Stonehaven

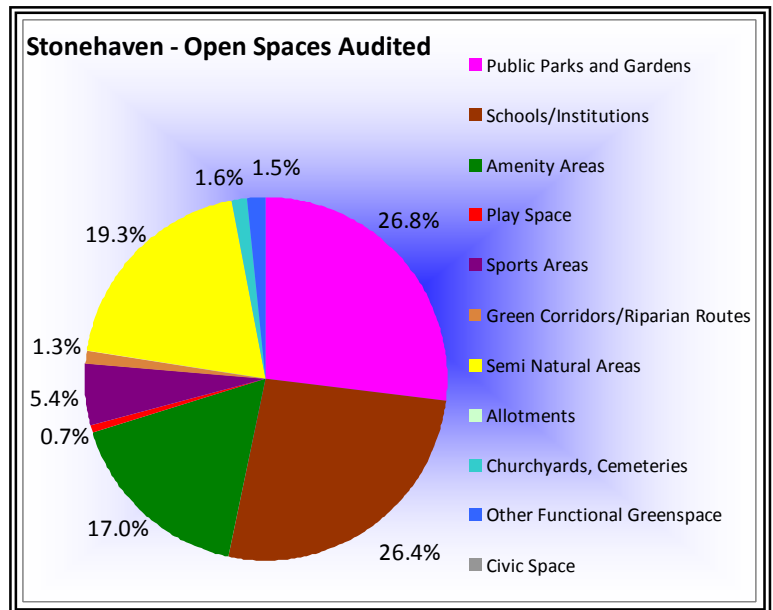
Population: 10794

Observations (of Community Council)

None received

Green Network Links

A number of core paths are identified around the town, providing links to Dunnottar Woodland Park, Mineralwell Park and the coastal path. The majority of the town lies between the Cowie Burn and Mineralwell Park to the north, and the Carron Water to the South. Although a footpath follows the Carron along some of its length, this would benefit from improvement in some places.



Open Space Requirements

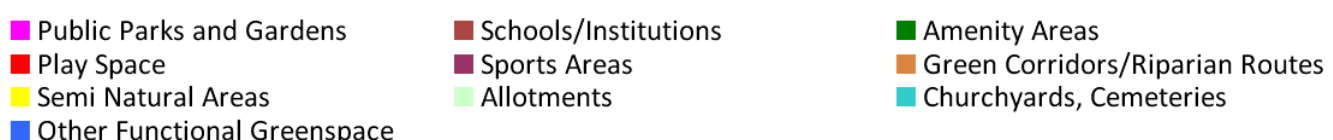
Auditors made a wide range of recommendations for Stonehaven, notably identifying a number of sites which appeared to have capacity for further sports provision. Although certain schools were mentioned in this respect (e.g. Mill of Forest, Carronhill School and Mackie Academy), any initiative for additional sports would be a matter the individual school, and require consideration in the context of the Aberdeenshire Pitches Study. Outwith educational establishments, suggestions were made for basketball, or alternative sports facility, in the area adjoining the leisure centre, and for the installation of goal posts in sports area adjacent to Beach Road. The availability of facilities for teenagers was raised in relation to the Farrochie area, where a tennis court, or a greater range of play elements for older children were recommended.

The football area between Thomson Terrace and Woodcot Park scored poorly, but could potentially be improved with the provision of benches, a play park and bins, and with some repairs to the fence.

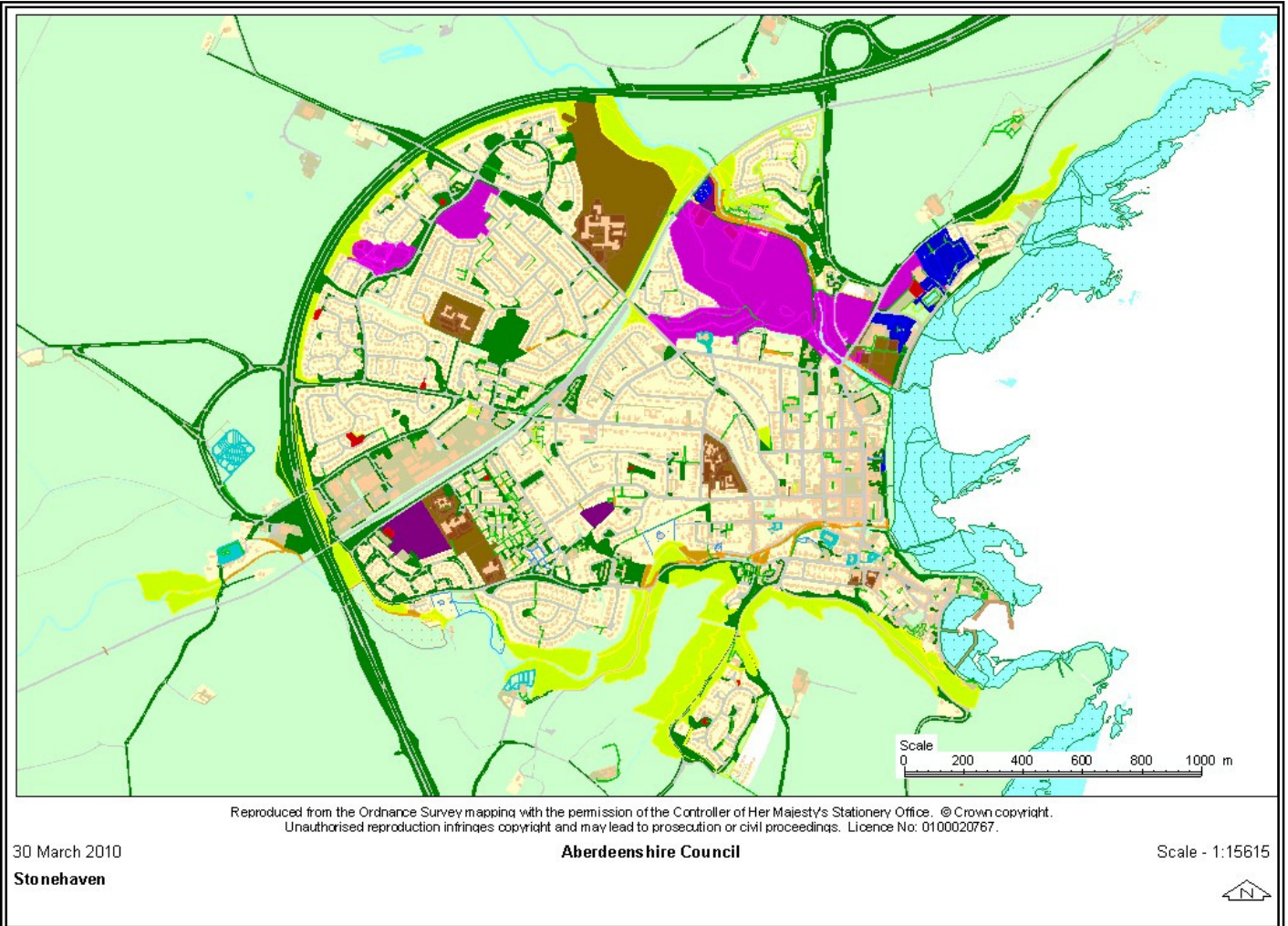
At Forest View, auditors suggested that the abandoned concrete area may have capacity for basketball, and the potential for allotments was raised in relation to the grassy site accessible from the end of Park Place and via the footpath from garages on Martin Place.

A number of sites were recommended as picnic areas, including the beach and Ivy Place. Throughout the town, opportunities were identified for the installation of benches, such as at Braehead, Woodcot Gardens and Ink Bottle Walk: all of these will be considered within the context of a further detailed review of the towns parks and open spaces.

Overall, Stonehaven has about 40 per cent of its area available as public open space, due in large part to the presence of Dunnottar Woodland Park, Mineralwell Park and extensive playing fields at Mackie Academy. Amongst the larger towns of Aberdeenshire, Stonehaven stands out as having



a well balanced range of open space types available to residents: woodland, coast, parks, field sports, tennis facilities, play areas and civic space. Key issues going forward are likely to be continued maintenance, improvements in a few named areas, and ensuring access to all groups – in particularly the elderly and less able – by ensuring ample seating provision throughout the town.



- | | | |
|---|---|---|
| ■ Public Parks and Gardens | ■ Schools/Institutions | ■ Amenity Areas |
| ■ Play Space | ■ Sports Areas | ■ Green Corridors/Riparian Routes |
| ■ Semi Natural Areas | ■ Allotments | ■ Churchyards, Cemeteries |
| ■ Other Functional Greenspace | | |

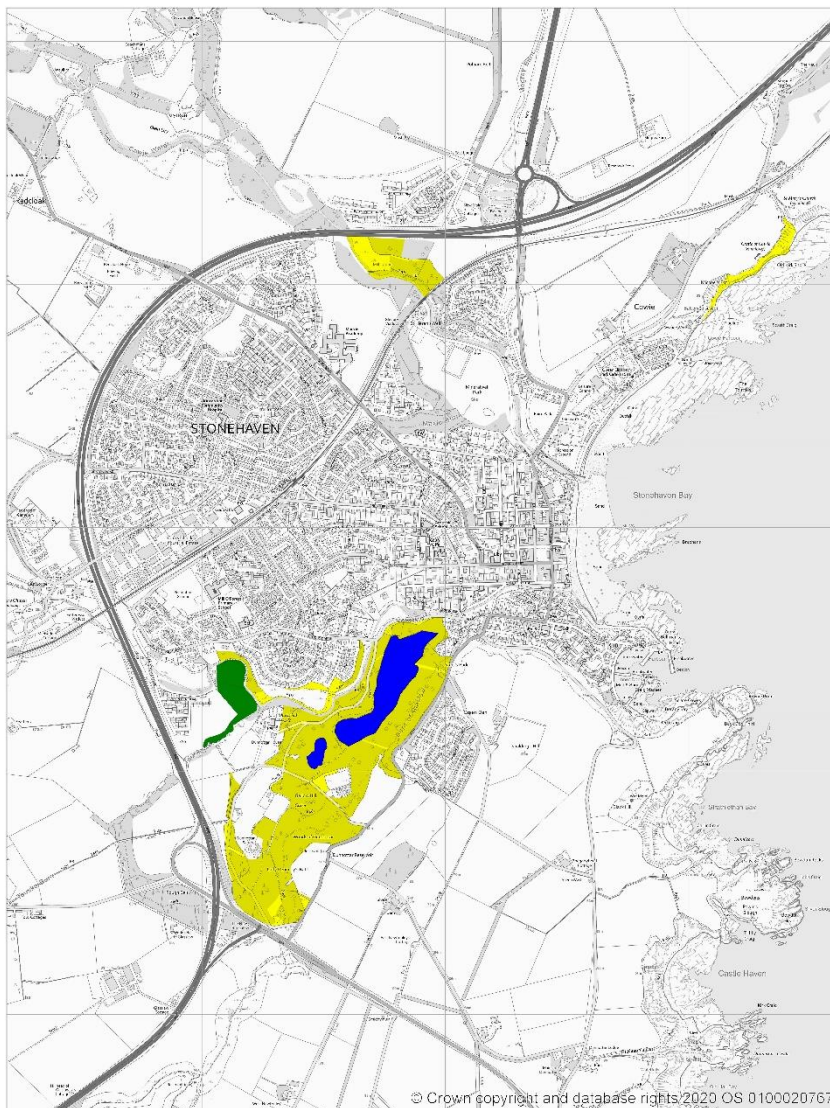
Open Space Audit Update 2019: Stonehaven

An update exercise was carried out in 2019 to account for new open spaces arising from major developments completed since the Open Space Audit 2010, and to address any known disparities/gaps in information. The scope of the update exercise did not include a review of the Open Space Audit 2010. The Audit update 2019 has been used to assist in the preparation of the Proposed Aberdeenshire Local Development Plan 2020.

This is an interim Audit.











Whilst this information will feed into a future comprehensive Open Space Audit, at this stage there may be some auditing inconsistencies across settlements due to factors such as community interest, and landscape/topography influencing how open spaces are identified, particularly at and around the edges of settlement.

Allotments are excluded as these are audited separately as part of the Food Growing Strategy 2019-2030.



500 m
700 yd



- | | | |
|---|--|---|
|  Public Parks and Gardens |  Schools/Institutions |  Amenity Areas |
|  Play Space |  Sports Areas |  Green Corridors/Riparian Routes |
|  Semi Natural Areas |  Allotments |  Churchyards, Cemeteries |
|  Other Functional Greenspace | | |