



Area : Banff and Buchan

Parish : Fordyce

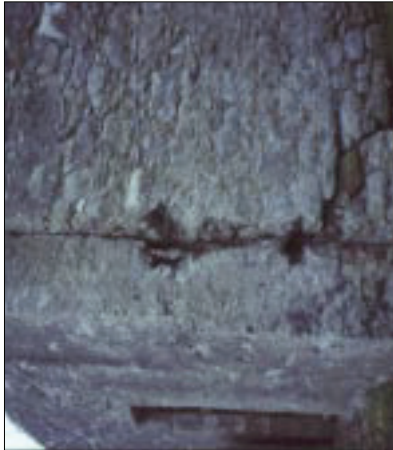
Kirkyard : St. Talorgan's old Kirk.

N.G.R. : NJ 555 638

S.A.M. : Scheduled Ancient Monument.

Listing Category : Kirk and Yard Cat. A.

Boundary wall and gate piers : The gates are in good order though they need to be painted, the piers must have the surface weeds removed and joints repointed. The boundary wall, internally and externally, must be cleared of surface weeds and re-pointed throughout. The N.E. corner of the boundary wall must have the rubbish and an inappropriately placed gravestone relocated before this section of the wall can be rebuilt. A well-carved sandstone block, obviously from the Ogilvy of Findlater tomb, lies in this corner and must be put back before it too is lost.



The old Kirk : A complex ruin of fragmentary remains. The original kirk was in the form of a narrow rectangle, of which the chancel now remains and has been sub-divided into two enclosures. The E. enclosure features a “*rich crocketed and cusped ogee arch altar tomb to the Ogilvy of Deskford family*” with a superbly complete recumbent knight effigy.

The W. enclosure features a similar arch although the effigy is long gone and a few select carved stones now lie in its place. – The entire copings to both these enclosures are in bad condition and need re-pointing urgently. Later post-Reformation additions to the kirk include a three-storey gabled tower complete with a “*rich double arched pendant belfry*”

dated 1661. The vaulted ground floor serves as a porch with an external stair leading up to a session room. This room, laid out with a series of information plaques, could be exploited to greater interpretive potential. The entire structure needs to be re-pointed throughout.

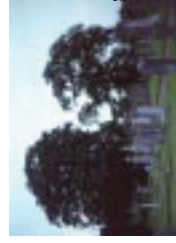
The Falconer of Dum aisle, to the E. of the tower, contains a dated monument of 1789. This entire structure is in relatively urgent condition with a rotten timber lintel with the wall-head above cracked. One petrified timber lintel above the entrance must be replaced and the W. and N. walls, not actually engaging, must be stitched together to form a true corner.

The Abercromby of Glassaugh aisle, of square plan with a small plain birdcage bellcote on the N. gable, contains a very fine 1781 memorial executed in polychrome grey and white statuary marble. The memorial is a fine exercise in classicism with a few provincial stylistic quirks. Nonetheless it is in complete contrast to the other monument within the building. The entire enclosure is littered with a build-up of beech leaves and debris which must be removed.

Tombstones: There are approximately 39 recumbent tombstones of which 6 are significantly decorated, with over one hundred upright tombstones of varying ages.

The Humphrey enclosure is in urgent need of repair as the two large trees growing internally have caused several large cracks to the enclosure walls and they will soon fall.

All the recumbent stones need to be brushed urgently to remove moss and



grass cuttings, other-

wise the inscriptions and designs will be lost



forever.

Conservation Digest : Urgent details.

There are many urgent features of this kirk and yard, all specifically listed above, which need to be undertaken very soon.

Interpretative Potential : Very high.

There are many features of outstanding architectural and historical importance within this yard, though these can be exploited when the many urgent problems are redressed. The session room in the tower could be developed further with more illustrative and engaging displays. The location within the beautiful village of Fordyce adds greatly to the charms of the place.

Access Issues : St. Talorgan's is located at the side of a road though there is no specific parking for cars.

Date of Visit : 13/08/98.

