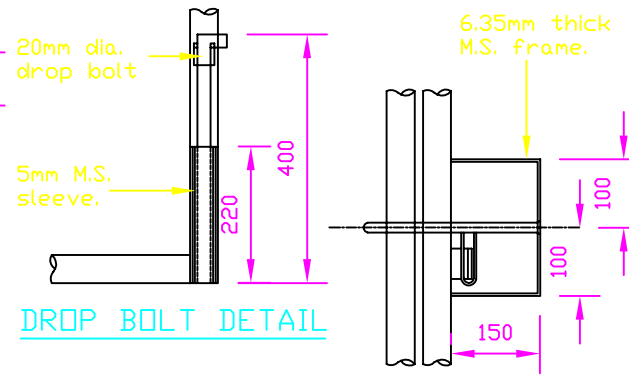
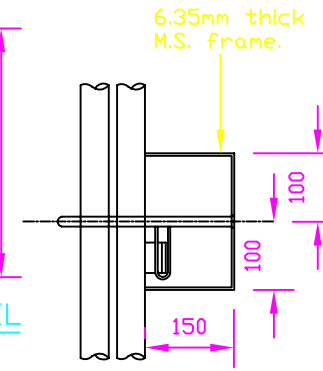


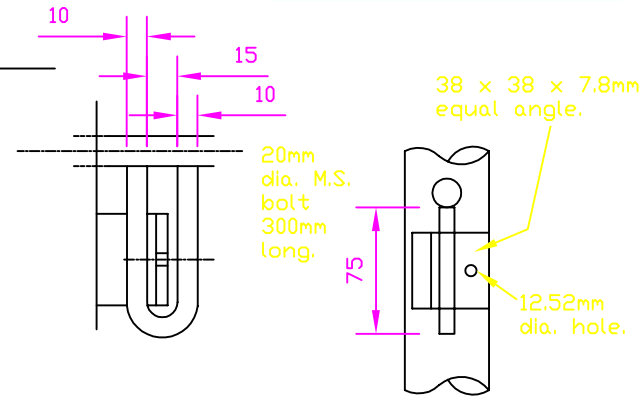
**ELEVATION**



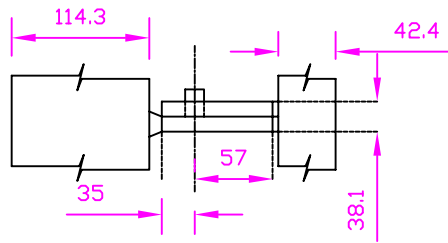
**DROP BOLT DETAIL**



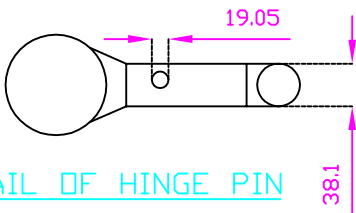
**SLIDING BOLT DETAIL**



**PROVISION FOR PADLOCK**



10mm fillet welds



**DETAIL OF HINGE PIN**

Type	H	L	W
1	1800	3600	1573.7
2	2600	3600	1573.7
3	1800	5000	2273.7

**SPECIFICATION**

1. Framework 42.4mm  $\square$ /D x 2.6mm thick steel tube to BS EN 10056 -1 : 1999 6mm welds throughout.
2. Cladding 50.8 x 50.8 x 4.05mm welded mesh spot welded to frame.
3. Hinge 19.05mm dia. M.S. hinge pin and eye, 2 no. 92 x 38.1 x 10mm thick M.S. plates.
4. Posts 114.3mm  $\square$ /D x 3.6mm thick tubular steel posts to BS EN 10056 -1 : 1999, 6.3mm plates welded to top of posts (3mm weld).
5. Padlock To suit gate complete with two keys.
6. Erection For 180° opening hinges to be set to rear of post.

**NOTES**

1. All dimensions are in millimetres unless otherwise stated.
2. All steelwork to be hot dipped galvanised.

No.	Date	Description
AMENDMENTS		