

Settlement Summary: Huntly

Population: 4353

Observations (of Community Council)

The Community Council responded to the open space audit consultation with the following observations/suggestions:

Gladstone Road Park is an excellent and well used facility which would benefit from the provision of benches, and the addition of bins at the lower section of the park. The feedback also requested that the ground where the flood wall was constructed be levelled off. Furthermore, it was suggested that the play equipment could do with a good scrub (auditors reported graffiti here). As it is unlikely that Aberdeenshire Council are able increase current maintenance levels, this may be an opportunity for a community based project.

Nordic Ski Centre/Deveron Park – Request for either a) play area to be fenced off or b) ‘Dogs to be kept on lead’ signs to be erected, as the area is “completely marred by dog owners allowing their dogs off the lead close to and often right up at the play equipment”.

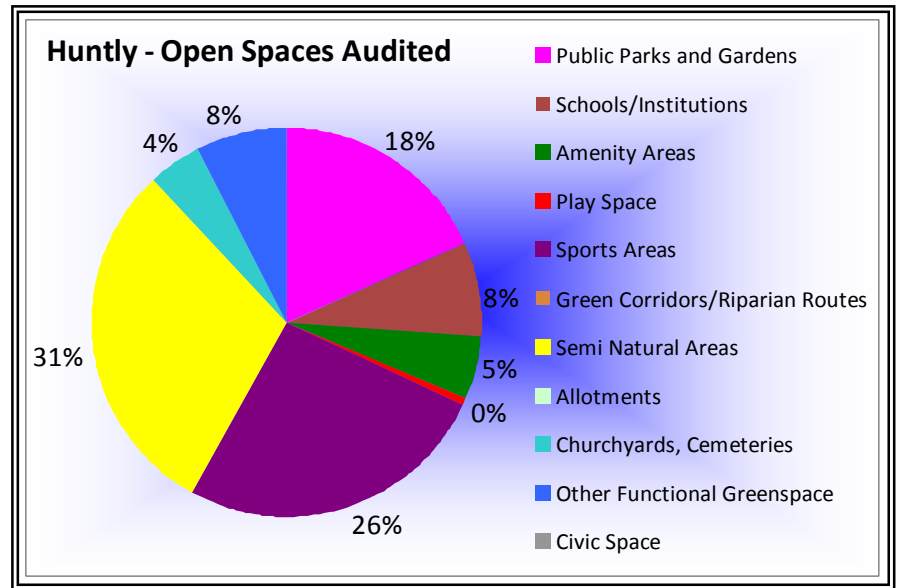
Green Network Links

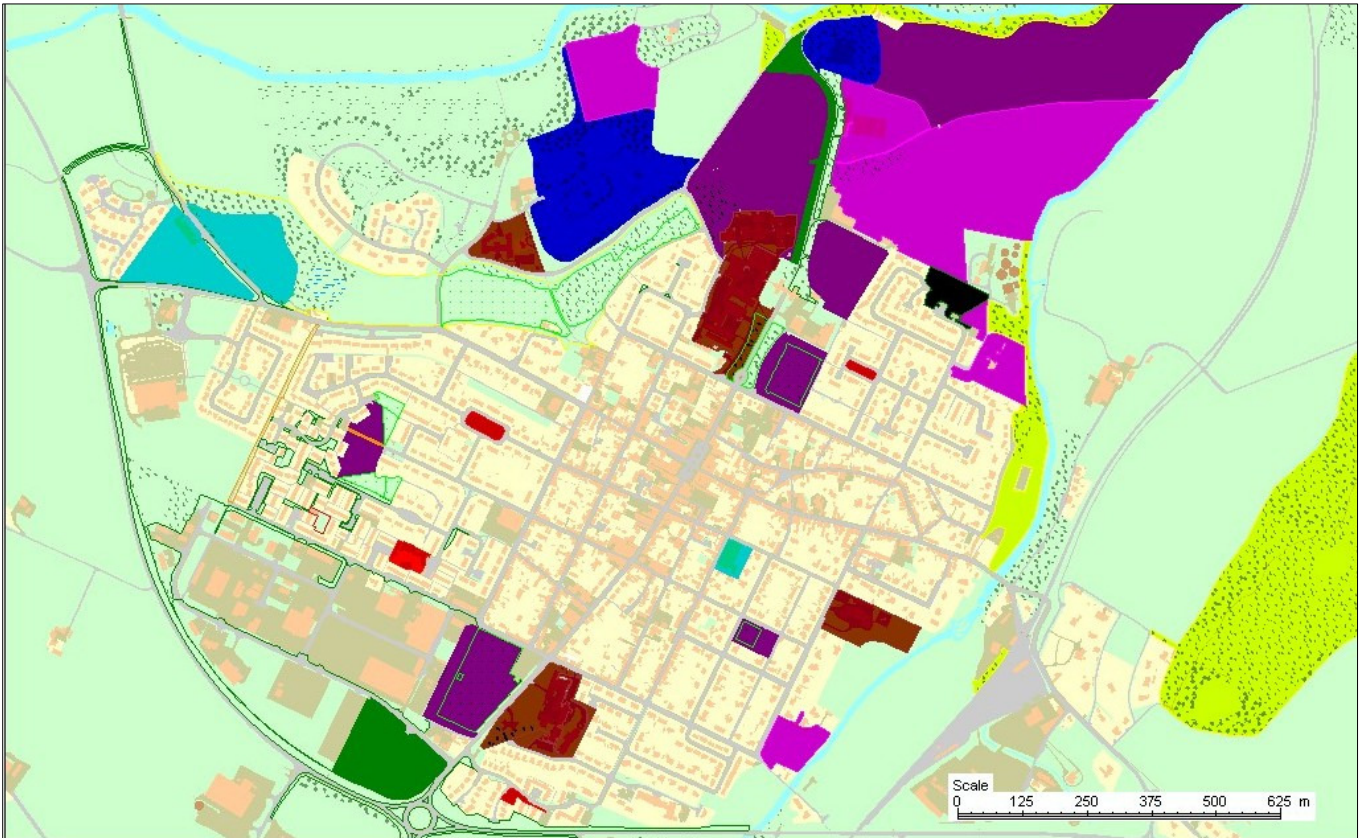
Green network links within Huntly are comparatively poor. Due to the traditional grid street layout, most areas of greenspace within the settlement are isolated. This issue also extends to the outskirts, with the A96 bounding the town to the south and west. Green linkages are better to the north of Huntly with the presence of the golf course, park, Nordic Ski Centre, caravan site, castle grounds and blue green networks around the River Deveron. In the event of any new development occurring, it is essential to protect, enhance and maintain existing linkages whilst creating new opportunities for the passage of pedestrians, wildlife and biodiversity.

Open Space Requirements

In addition to feedback provided by the Community Council, auditors made the following observations/suggestions:

- Yule Square play area would benefit from a greater variety of play equipment.
- Scott Drive Amenity area and West Court Play Area – play equipment is old and rusty and replacement/renovation of facilities would improve these sites.





Reproduced from the Ordnance Survey mapping with the permission of the Controller of Her Majesty's Stationery Office. © Crown copyright.
 Unauthorised reproduction infringes copyright and may lead to prosecution or civil proceedings. Licence No: 0100020767.

17 September 2010

Aberdeenshire Council

Scale - 1:9621

Huntly



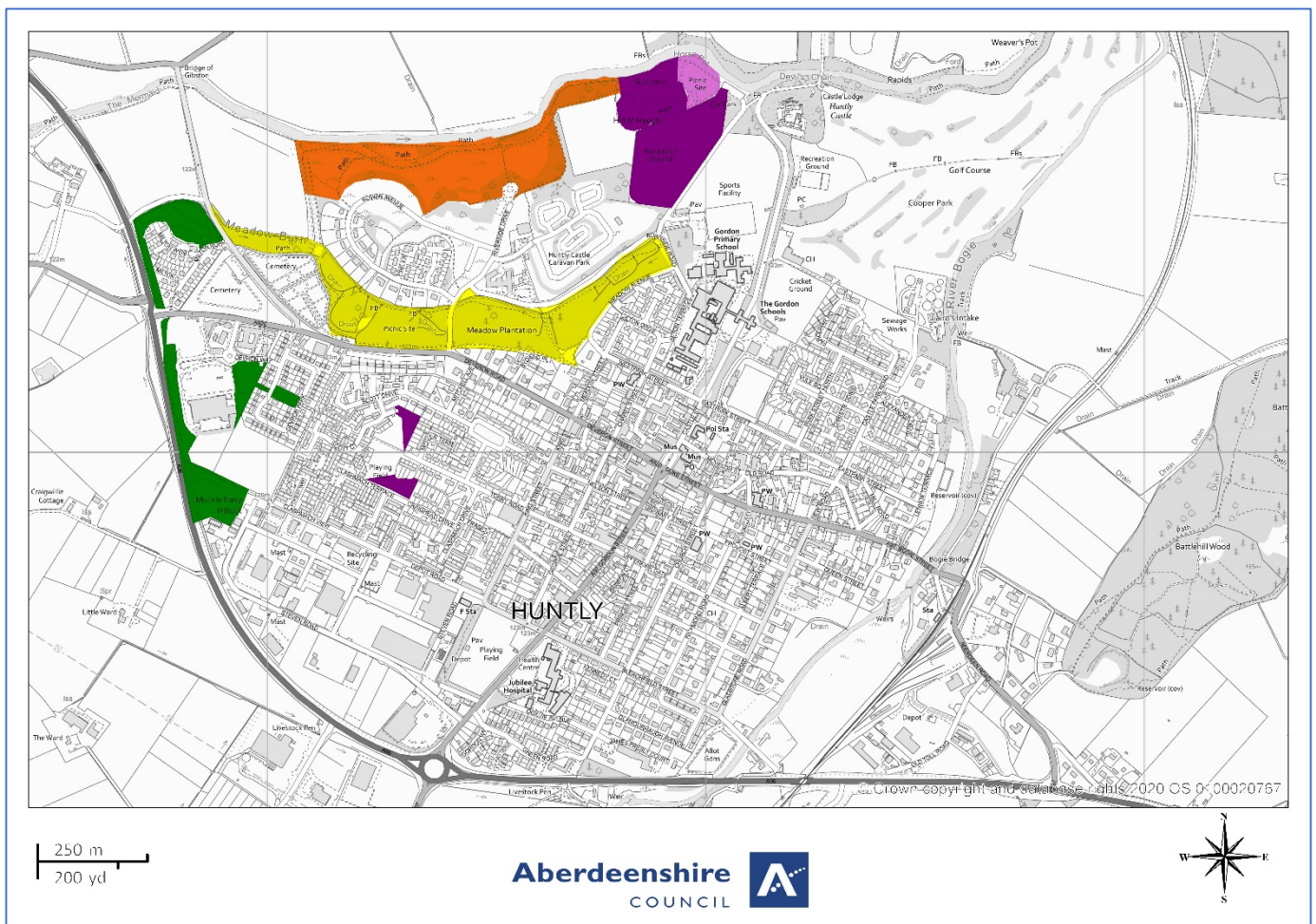
- | | | |
|---|---|---|
| ■ Public Parks and Gardens | ■ Schools/Institutions | ■ Amenity Areas |
| ■ Play Space | ■ Sports Areas | ■ Green Corridors/Riparian Routes |
| ■ Semi Natural Areas | ■ Allotments | ■ Churchyards, Cemeteries |
| ■ Other Functional Greenspace | | |

Open Space Audit Update 2019: Huntly

An update exercise was carried out in 2019 to account for new open spaces arising from major developments completed since the Open Space Audit 2010, and to address any known disparities/gaps in information. The scope of the update exercise did not include a review of the Open Space Audit 2010. The Audit update 2019 has been used to assist in the preparation of the Proposed Aberdeenshire Local Development Plan 2020.

This is an interim Audit. Whilst this information will feed into a future comprehensive Open Space Audit, at this stage there may be some auditing inconsistencies across settlements due to factors such as community interest, and landscape/topography influencing how open spaces are identified, particularly at and around the edges of settlement.

Allotments are excluded as these are audited separately as part of the Food Growing Strategy 2019-2030.



- | | | |
|---|---|---|
| ■ Public Parks and Gardens | ■ Schools/Institutions | ■ Amenity Areas |
| ■ Play Space | ■ Sports Areas | ■ Green Corridors/Riparian Routes |
| ■ Semi Natural Areas | ■ Allotments | ■ Churchyards, Cemeteries |
| ■ Other Functional Greenspace | | |