

## Settlement Summary: Kintore

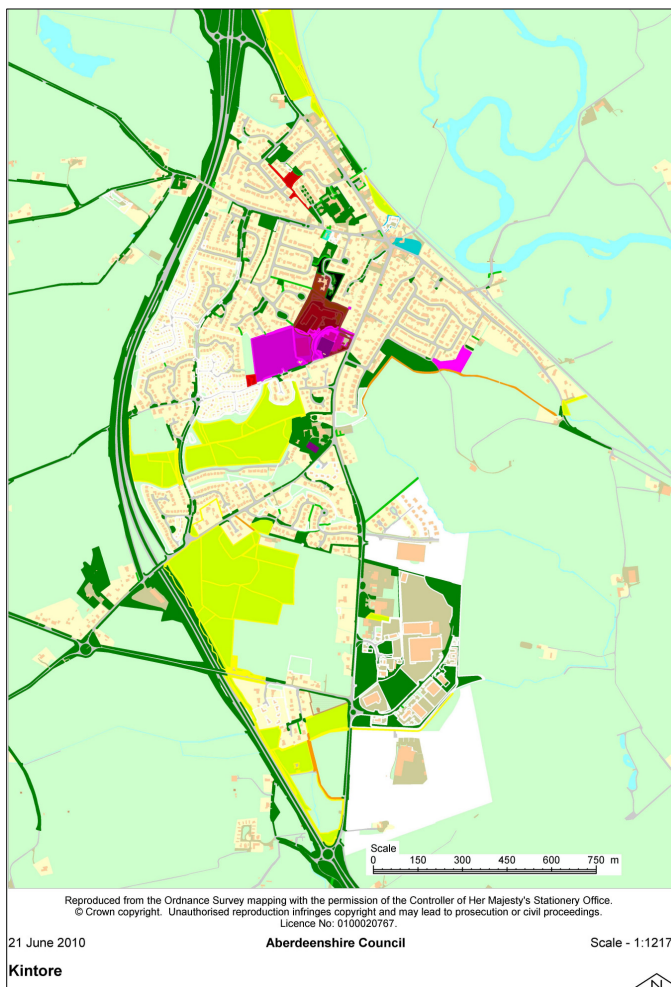
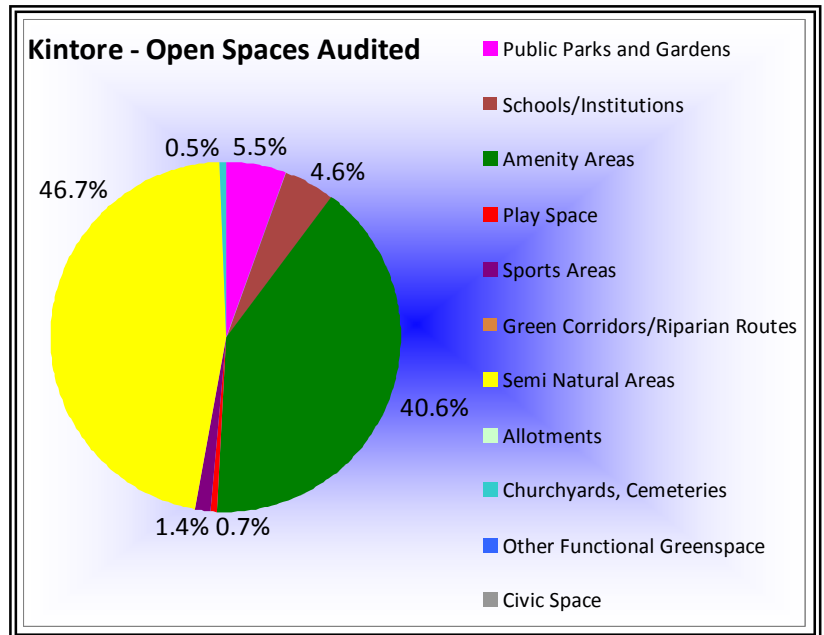
Population: 3302

### Observations (of Community Council)

None received.

### Green Network Links

Greenspace within the town appears well linked at present; it will important to maintain and enhance green infrastructure in the event of new development occurring. In particular, there is a need to link existing open spaces around Rollo Mire and Gauch Hill, to Tuach Hill, a local viewpoint, in the context of development proposed in the Local Development Plan.

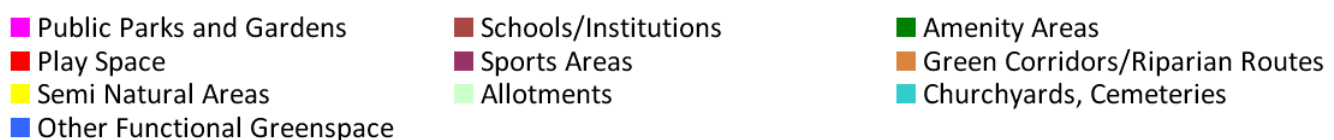


### Open Space Requirements

Suggested improvements for Kintore include improvements to the football pitch and the provision of benches at Gauchhill Woods.

A relatively small proportion of Kintore's open space is available for sports (particularly compared to e.g. Inverurie) underlying the need to improve the quality of what is available. The high proportion of amenity areas can be attributed to the A90 transport corridors, as well as Rollo Mire, the area of wet woodland swamp situated to the west of the village, and Gauch Hill Woods. The latter, a designated Ancient Woodland situated southwest of the village, has potential as a community woodland site, enabling improved paths, forest schools activities, and wider community involvement.

In addition to the afore mentioned areas of greenspace, the town square, overlooked by the historic town house, offers potential as a focal point for community events.



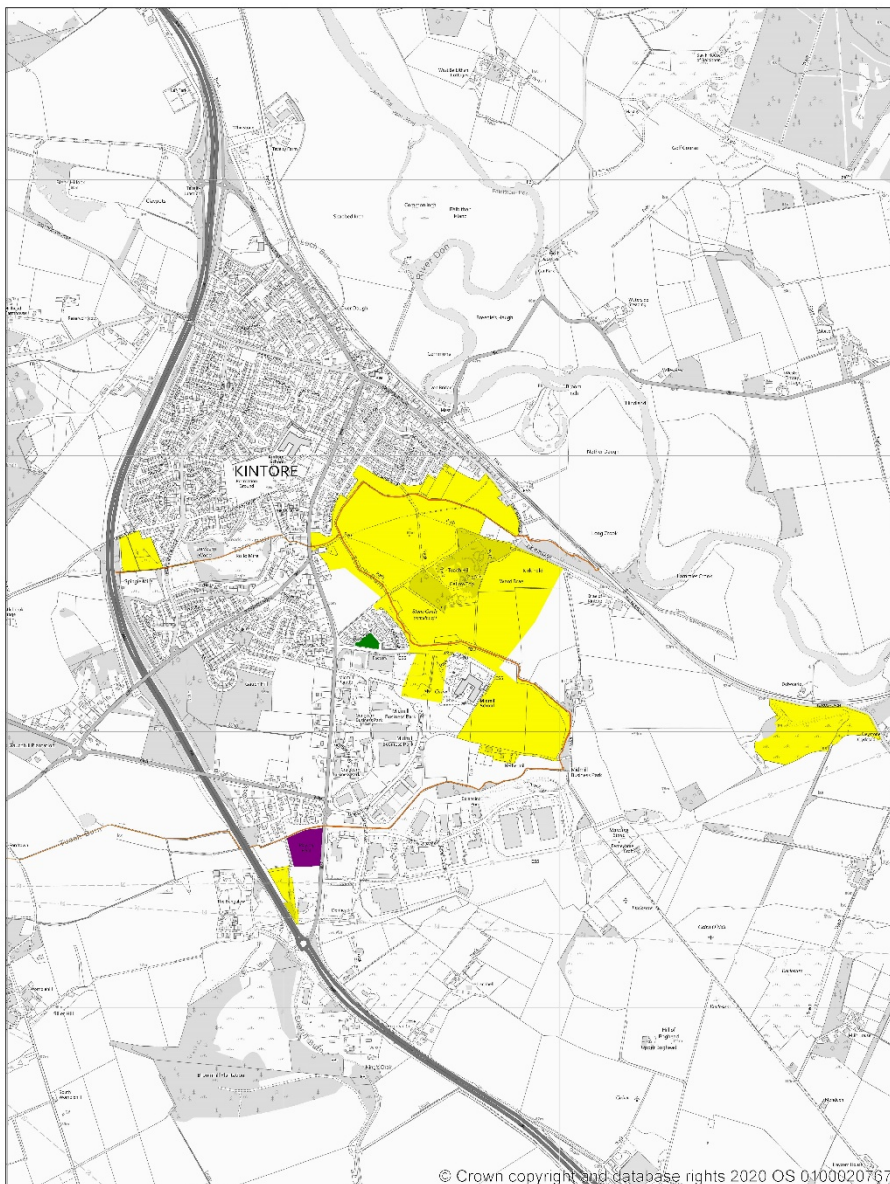
## Open Space Audit Update 2019: Kintore

An update exercise was carried out in 2019 to account for new open spaces arising from major developments completed since the Open Space Audit 2010, and to address any known disparities/gaps in information. The scope of the update exercise did not include a review of the Open Space Audit 2010. The Audit update 2019 has been used to assist in the preparation of the Proposed Aberdeenshire Local Development Plan 2020.

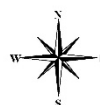
### This is an interim Audit.

Whilst this information will feed into a future comprehensive Open Space Audit, at this stage there may be some auditing inconsistencies across settlements due to factors such as community interest, and landscape/topography influencing how open spaces are identified, particularly at and around the edges of settlement.

Allotments are excluded as these are audited separately as part of the Food Growing Strategy 2019-2030.



500 m  
400 yd



- |                             |                      |                                 |
|-----------------------------|----------------------|---------------------------------|
| Public Parks and Gardens    | Schools/Institutions | Amenity Areas                   |
| Play Space                  | Sports Areas         | Green Corridors/Riparian Routes |
| Semi Natural Areas          | Allotments           | Churchyards, Cemeteries         |
| Other Functional Greenspace |                      |                                 |