

Settlement Summary: Macduff

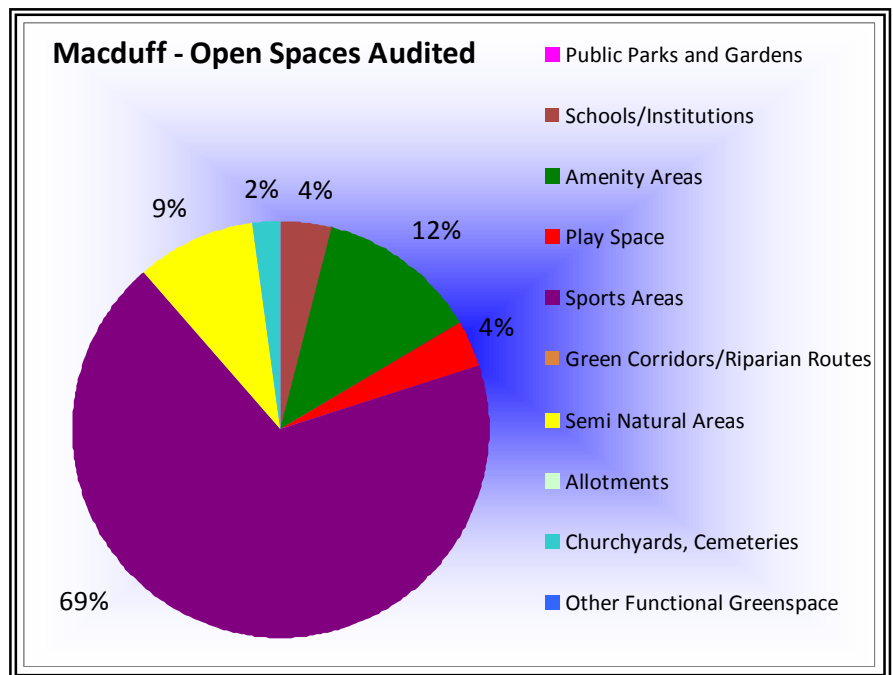
Population: 3744

Observations (of Community Council)

None received.

Green Network Links

Amenity greenspace is quite poorly linked within the town, with few opportunities to redress this within the established built fabric. Green access links in the area are concentrated on the coast, which is the main attraction, although currently there is no link east to Gardenstown. The Core Paths Plan recommends that a feasibility study be carried out to explore potential for this in the longer term.

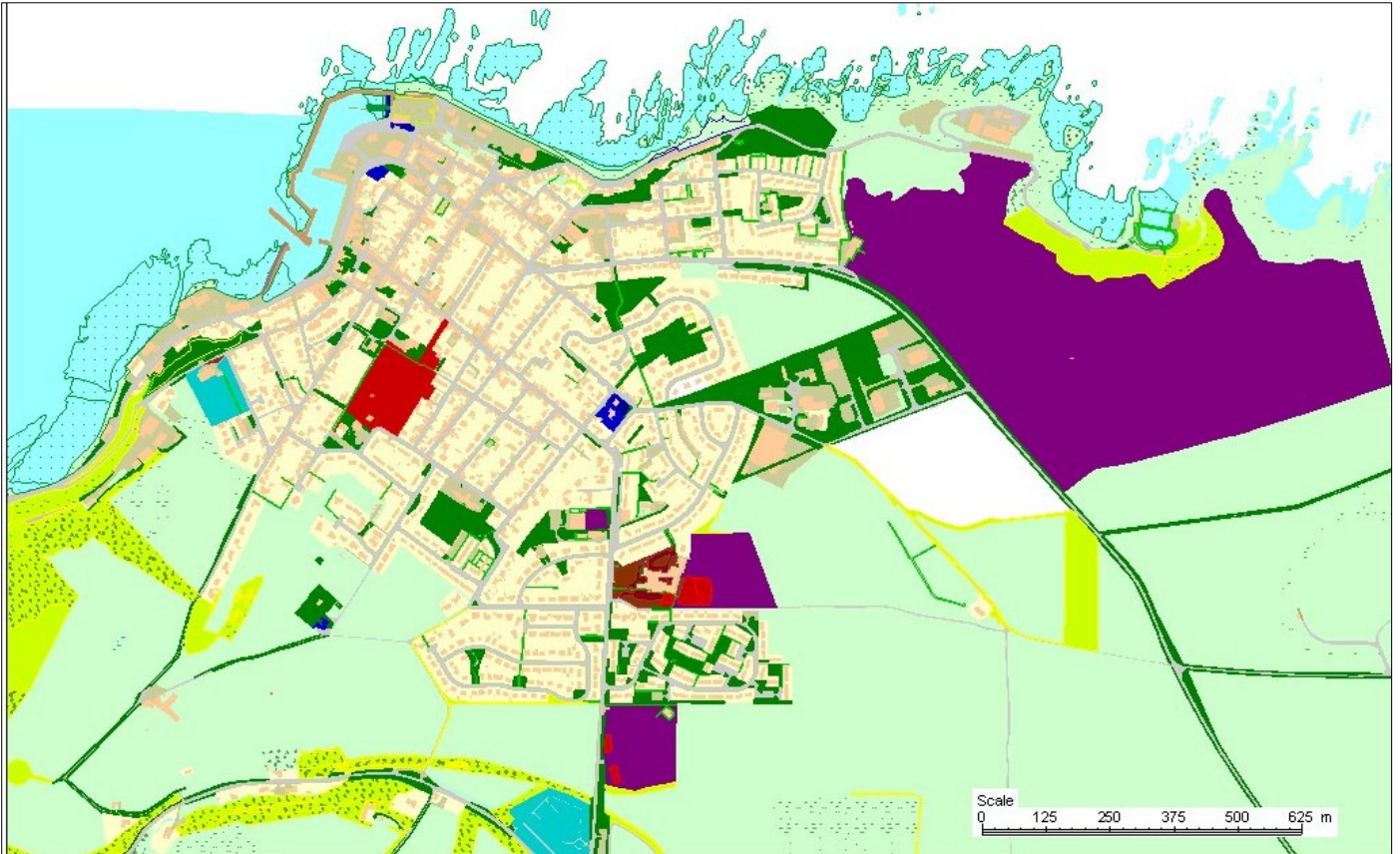


Open Space Requirements

Much of Macduff's public open space scored quite highly, with few key recommendations from the audit. The waterfront is identified as an area which would benefit from the provision of seating and planting, as well as improved disabled access. Suggestions for further planting were also made in respect of the seating area at Crook O'Ness Street, and the play park at the Knowes, although planting may be difficult on some of these exposed coastal sites. More facilities are recommended at Melrose Crescent, although specific issues are not identified, other than a lack of signage.

Other minor recommendations for the town include the provision of seating and further planting at a range of sites, which will be reviewed on an ongoing basis as part of the Council's annual maintenance programme. Similarly, the provision of play facilities or enhanced play facilities is suggested on some sites, including e.g. Fife Terrace and The Leys, which will also be subject to further review.

A high proportion of Macduff is shown as sports area, due the Royal Tarlair Golf Course together with playing fields at the community school and Myrus playing fields. Semi natural areas are few within the town itself, although paths and tracks in the area between the A947/Dounemount House and Barnhill/Corskie are well used. There are woodlands around Duff House, and the open space around the Temple of Venue is readily accessible from Gellymill Road.



Reproduced from the Ordnance Survey mapping with the permission of the Controller of Her Majesty's Stationery Office. © Crown copyright.
Unauthorised reproduction infringes copyright and may lead to prosecution or civil proceedings. Licence No: 0100020767.

09 April 2010

Macduff

Aberdeenshire Council

Scale - 1:10000



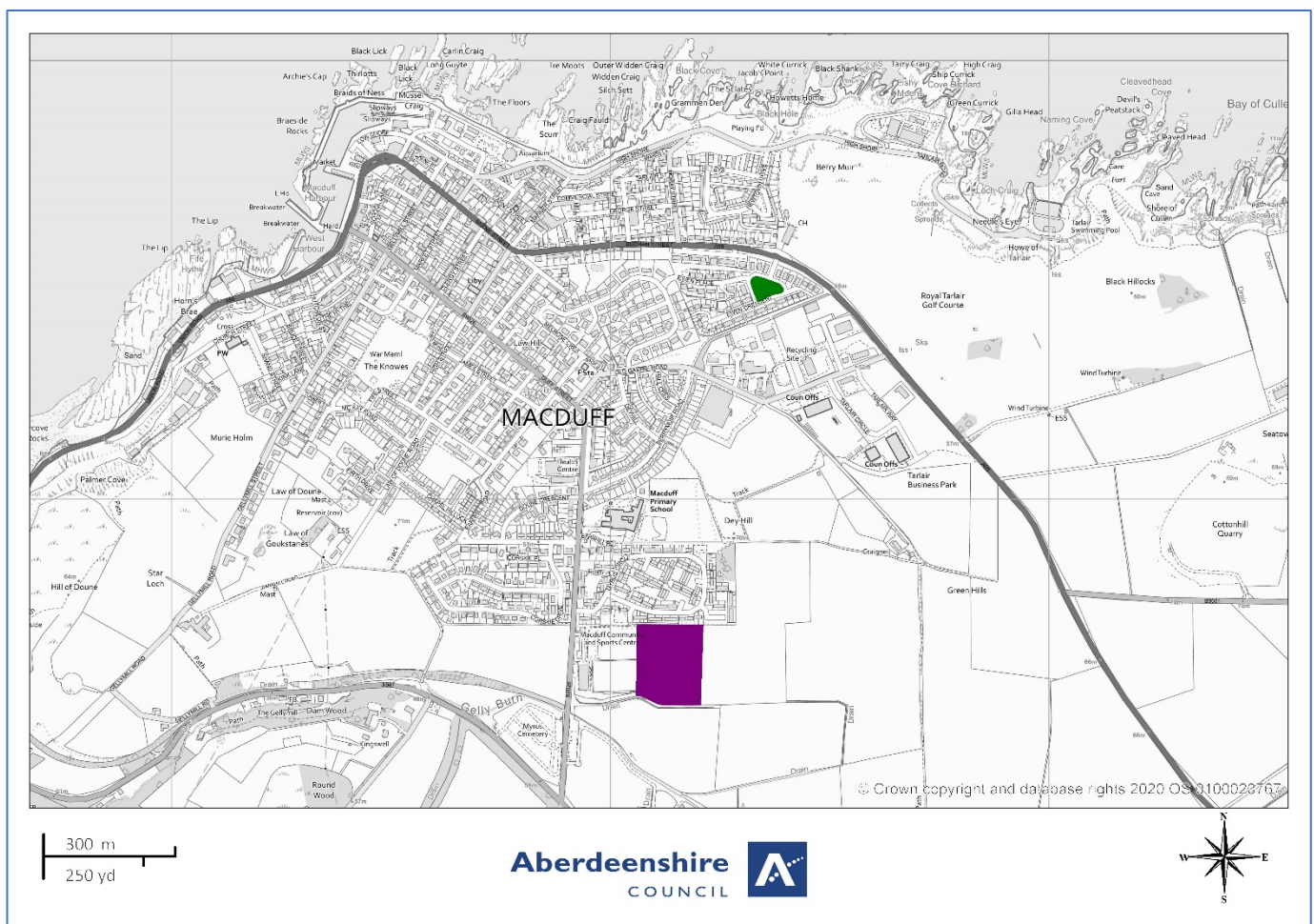
- | | | |
|---|---|---|
| ■ Public Parks and Gardens | ■ Schools/Institutions | ■ Amenity Areas |
| ■ Play Space | ■ Sports Areas | ■ Green Corridors/Riparian Routes |
| ■ Semi Natural Areas | ■ Allotments | ■ Churchyards, Cemeteries |
| ■ Other Functional Greenspace | | |

Open Space Audit Update 2019: Macduff

An update exercise was carried out in 2019 to account for new open spaces arising from major developments completed since the Open Space Audit 2010, and to address any known disparities/gaps in information. The scope of the update exercise did not include a review of the Open Space Audit 2010. The Audit update 2019 has been used to assist in the preparation of the Proposed Aberdeenshire Local Development Plan 2020.

This is an interim Audit. Whilst this information will feed into a future comprehensive Open Space Audit, at this stage there may be some auditing inconsistencies across settlements due to factors such as community interest, and landscape/topography influencing how open spaces are identified, particularly at and around the edges of settlement.

Allotments are excluded as these are audited separately as part of the Food Growing Strategy 2019-2030.



- | | | |
|---|---|---|
| ■ Public Parks and Gardens | ■ Schools/Institutions | ■ Amenity Areas |
| ■ Play Space | ■ Sports Areas | ■ Green Corridors/Riparian Routes |
| ■ Semi Natural Areas | ■ Allotments | ■ Churchyards, Cemeteries |
| ■ Other Functional Greenspace | | |