

Settlement Summary: New Aberdour

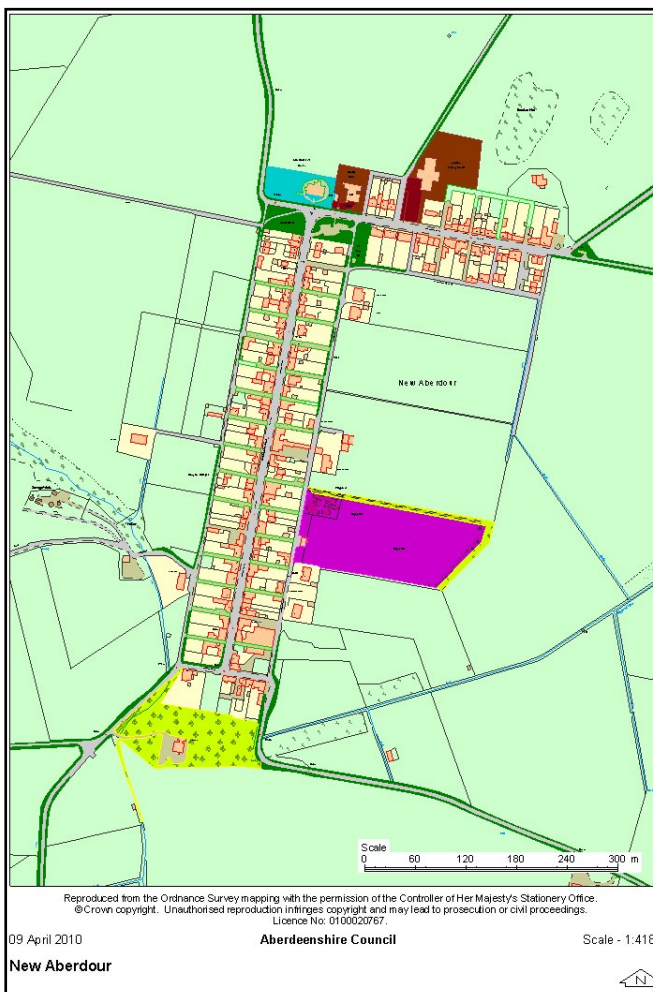
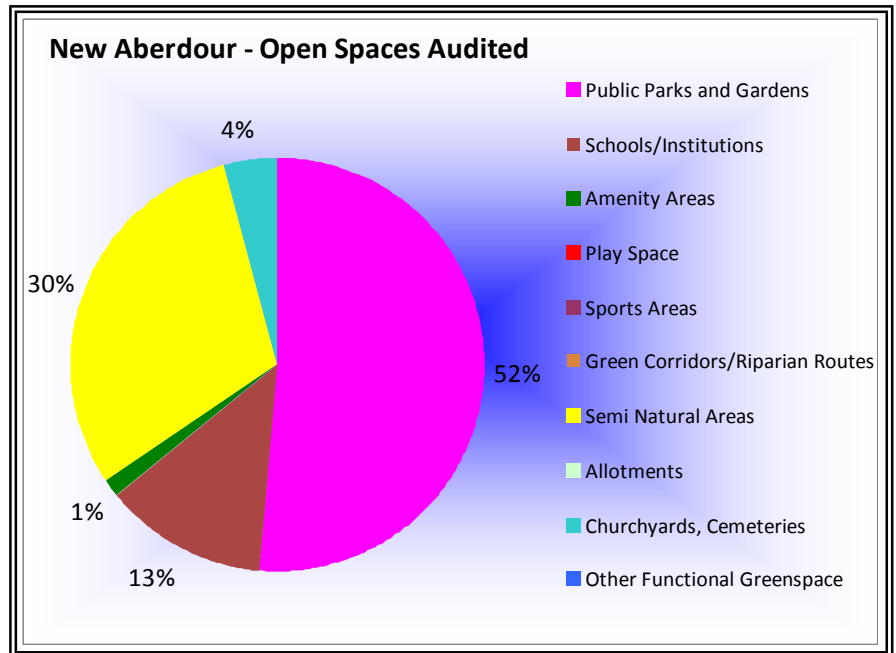
Population: 329

Observations (of Community Council)

No specific areas noted for improvement.

Green Network Links

New Aberdour is a largely linear settlement, and as such the surrounding countryside is easily accessible from public spaces. The Core Path Plan proposes the link between Pennan and New Aberdour as a potential Core Path.



Open Space Requirements

With a population of just over 300, the playing field unsurprisingly accounts for a large proportion of the public space in Aberdour. However, for a village of this size, a good range of greenspace is available, including a picnic area, a playing field with a play park, woodland with walks, and churchyards. All sites scored well, with no issues raised by auditors or on behalf of the local community. In the event of any additional development, it will be important to maintain the good balance of facilities and level of maintenance.

Public Parks and Gardens
Play Space
Semi Natural Areas
Other Functional Greenspace

Schools/Institutions
Sports Areas
Allotments

Amenity Areas
Green Corridors/Riparian Routes
Churchyards, Cemeteries

Open Space Audit Update 2019: New Aberdour

An update exercise was carried out in 2019 to account for new open spaces arising from major developments completed since the Open Space Audit 2010, and to address any known disparities/gaps in information. The scope of the update exercise did not include a review of the Open Space Audit 2010. The Audit update 2019 has been used to assist in the preparation of the Proposed Aberdeenshire Local Development Plan 2020.

This is an interim Audit. Whilst this information will feed into a future comprehensive Open Space Audit, at this stage there may be some auditing inconsistencies across settlements due to factors such as community interest, and landscape/topography influencing how open spaces are identified, particularly at and around the edges of settlement.

Allotments are excluded as these are audited separately as part of the Food Growing Strategy 2019-2030.

There are no updates to the Open Space Audit 2010.