

## Settlement Summary: Oldmeldrum

Population: 3000

### Observations (of Community Council)

None received.

### Green Network Links

Amenity space in Oldmeldrum is relatively well linked, particularly when compared to more traditional settlements, where pockets of greenspace are frequently isolated.

Residential amenity land at Meadows Vale has links well

towards the east, including transport verges, along the Meadow Burn. Current paths provision is poor however in relation to the size of population, which has expanded rapidly in recent years. A number of aspirational routes are therefore suggested in the Core Paths Plan, which merit consideration, such as a link to Inverurie using the old railway. The new cycleway/footway to the west of the village links up to well used routes such as the Parcock Tree path and Barra Hill

### Open Space Requirements

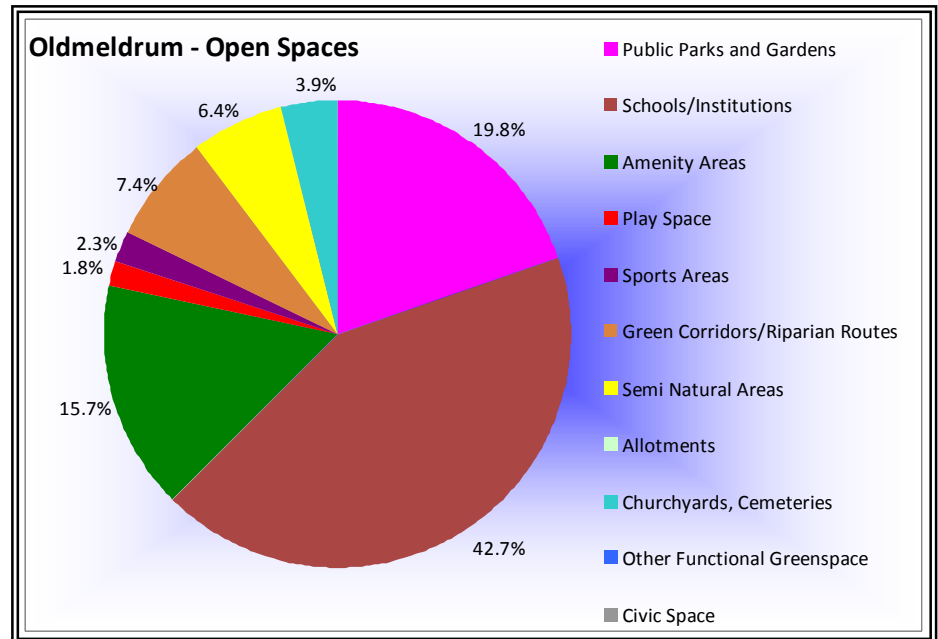
Oldmeldrum appears to have a reasonable overall proportion of public space within its boundaries. However, much of this is associated with schools and institutions, and with the main park located at the eastern edge of town, there is a need to improve recreation facilities across all user groups, towards the west.

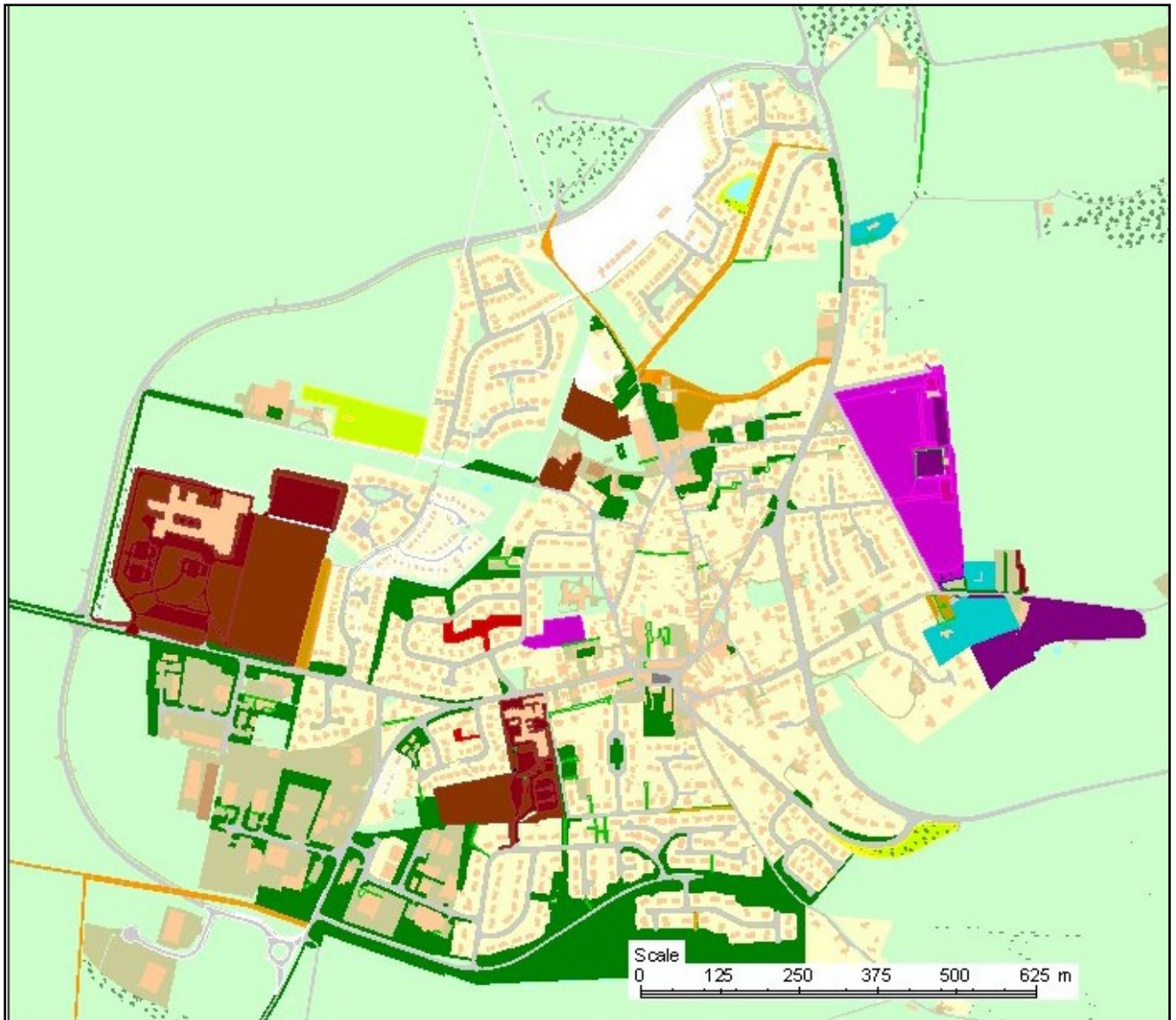
Within a town of this size, standards would require both a premier park, as well as a local park

With regard to smaller sites, a need for upgrading of play equipment was noted at play area at Westbank, and for seating facilities in the amenity space. Although a lack of equipment for older children was noted here, this may be better located with a new local park.

In terms of sporting facilities, a lack of disabled access to the bowling green was noted, as well the presence of debris around the pavilion. The fence at the tennis court was in a poor state of repair.

Overall, there appears to be a reasonable range of open space types in Oldmeldrum, although with provision concentrated towards one side of town, and a notable of semi-natural areas throughout. This would suggest that emphasis in future should be in terms of, for example, community gardens, allotments or access links to natural areas, as well as provision of an additional park to the west. There may well be scope to combine these two elements; however, the further views of the community would be necessary in this respect.





Reproduced from the Ordnance Survey mapping with the permission of the Controller of Her Majesty's Stationery Office.  
© Crown copyright. Unauthorised reproduction infringes copyright and may lead to prosecution or civil proceedings.  
Licence No: 0100020767.

24 June 2010

Aberdeenshire Council

Scale - 1:10000

Oldmeldrum



- Public Parks and Gardens
- Play Space
- Semi Natural Areas
- Other Functional Greenspace

- Schools/Institutions
- Sports Areas
- Allotments

- Amenity Areas
- Green Corridors/Riparian Routes
- Churchyards, Cemeteries

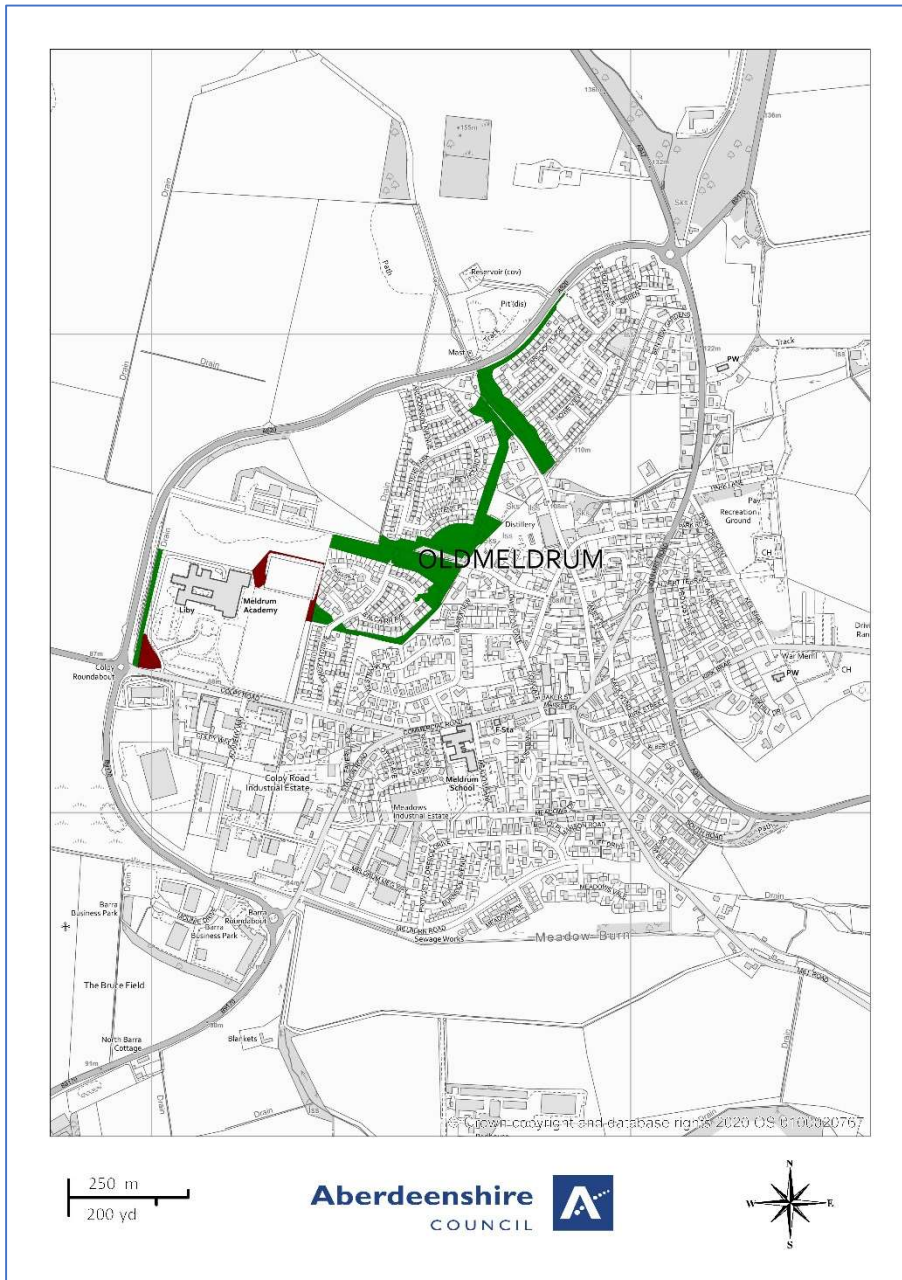
## Open Space Audit Update 2019: Oldmeldrum

An update exercise was carried out in 2019 to account for new open spaces arising from major developments completed since the Open Space Audit 2010, and to address any known disparities/gaps in information. The scope of the update exercise did not include a review of the Open Space Audit 2010. The Audit update 2019 has been used to assist in the preparation of the Proposed Aberdeenshire Local Development Plan 2020.

### This is an interim Audit.

Whilst this information will feed into a future comprehensive Open Space Audit, at this stage there may be some auditing inconsistencies across settlements due to factors such as community interest, and landscape/topography influencing how open spaces are identified, particularly at and around the edges of settlement.

Allotments are excluded as these are audited separately as part of the Food Growing Strategy 2019-2030.



- |   |   |   |
|---|---|---|
| <span style="color: magenta;">■</span> Public Parks and Gardens | <span style="color: brown;">■</span> Schools/Institutions | <span style="color: green;">■</span> Amenity Areas                    |
| <span style="color: red;">■</span> Play Space                   | <span style="color: purple;">■</span> Sports Areas        | <span style="color: orange;">■</span> Green Corridors/Riparian Routes |
| <span style="color: yellow;">■</span> Semi Natural Areas        | <span style="color: lightgreen;">■</span> Allotments      | <span style="color: cyan;">■</span> Churchyards, Cemeteries           |
| <span style="color: blue;">■</span> Other Functional Greenspace |   |   |