

Settlement Summary: Fraserburgh

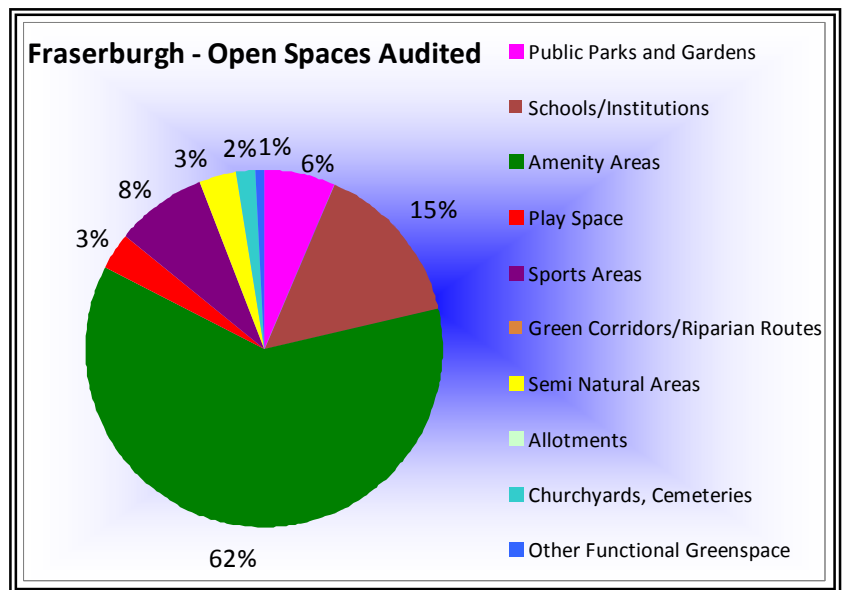
Population: 12,904

Observations (of Community Council)

None received.

Green Network Links

The Formartine and Buchan Way multi-use route to Peterhead and Aberdeen starts in Fraserburgh, However, apart from the coastal path linking Kinnaird Head to Sandhaven, via Broadsea, there are no other clear links to the west and southwest of the town. It is important to ensure that development proposals in this area include green corridors to these parts.



Open Space Requirements

A large number of sites were audited in Fraserburgh, with the following comments recorded in respect of those with the highest and lowest scores for each category.

- Middleburgh Road amenity area: reseeding and improved management required. The area is not in Council ownership, but appears to have no clear purpose; increased planting may add to biodiversity and local setting.
- Esplanade: scored highly overall; possibility of further planting.
- Blantyre Crescent play area: more equipment and planting recommended.
- Robbies Walk semi-natural greenspace: appears to have no clear purpose; may have potential for community space/community garden, and would benefit from further planting.
- Cemetery Road semi-natural greenspace: create formal paths and improve access, as it seems well used as walkway by local community.

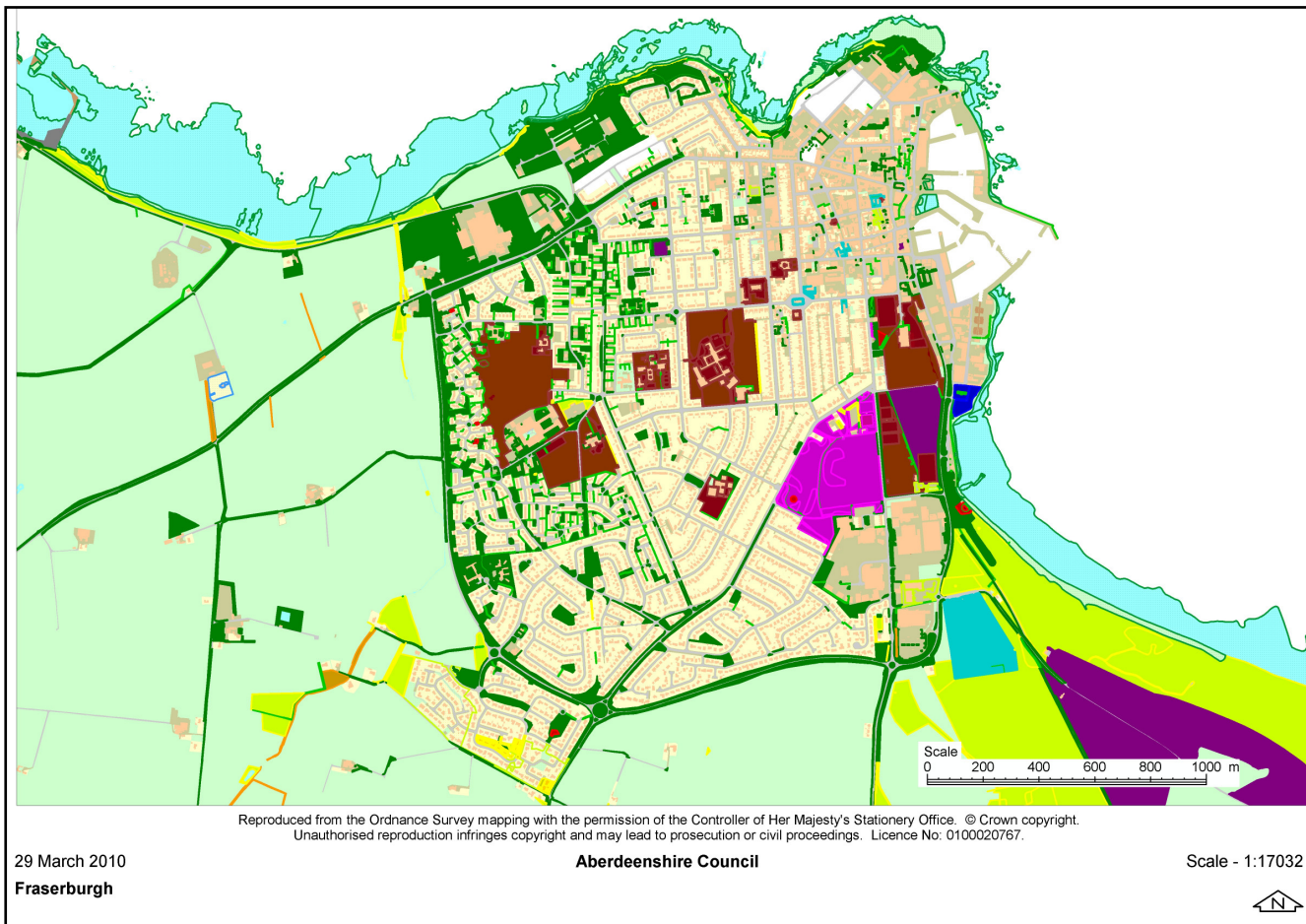
Where site management and ownership is unknown (as in the last two sites above), any suggestion would need to be taken forward, where desirable, in the context of discussion with the landowners.

Particularly notable in the case of Fraserburgh is the high ratio of amenity greenspace, at 62% of the total. While a proportion of this is due to principle transport corridors, and to larger areas at Broadsea and the school, there remain numerous small amenity spaces within residential areas. The high number of auditor recommendations for improvements at such sites reflects issues that can arise with the equipping and maintaining of fragmented greenspace. Suggestions for the provision of seating, for example, are made on several sites, including Sycamore Row, Miller Gardens, Robertson Road, Buchan Road and Scalloway Park. Equally, suggestions for the provision of (additional) play equipment are made at a range of sites, including Beech Avenue, Pine View, Loch Pots View and Buchan Road. Further planting is recommended at Thompson Terrace (where potential for a community garden was also raised) as well as sites at, e.g. Buchan Road, Arisaig Drive, Robbies Way, Robbies Walk, Alpine Place, Blantyre Crescent and Westray Park.

Identifying priority needs will require careful consideration both in terms of budget allocation, and taking into account the views of local residents. However, as elsewhere in Aberdeenshire, the proportion of senior citizens in Fraserburgh is set to rise dramatically in relation to younger age groups over the next 20 years. (e.g.147% increase in over 75s to 2033, for Aberdeenshire as a whole). With this in mind, there may be a case for prioritising seating provision over play areas, and identifying where planting might be carried out with the support of local residents.

Remaining open space types are fairly evenly divided, with no apparent shortage of sports areas. However, pitches readily accessible to the public are located mainly in the east, and as with sites throughout Aberdeenshire, pitch quality and drainage is a concern These issues should be further considered in the context of the Aberdeenshire Pitches Study, as well as the potential for change of use of the some of the high proportion of semi-natural areas in the town. This might be for formal/informal pitches, other sports provision, or a more passive use (see above), depending on the profile of residents in the vicinity.

Fraserburgh has a good proportion of public space available, with many larger spaces attached to the schools, the college and the hospital. A two mile stretch of award winning sandy beach, and the dune system to the south of the town, provides a valuable asset to residents and is popular with water sports enthusiasts. Overall, our findings suggest a need to focus on equipping and maintaining the many smaller areas of amenity space, and providing green links to the west of the town.



- Public Parks and Gardens
- Play Space
- Semi Natural Areas
- Other Functional Greenspace

- Schools/Institutions
- Sports Areas
- Allotments

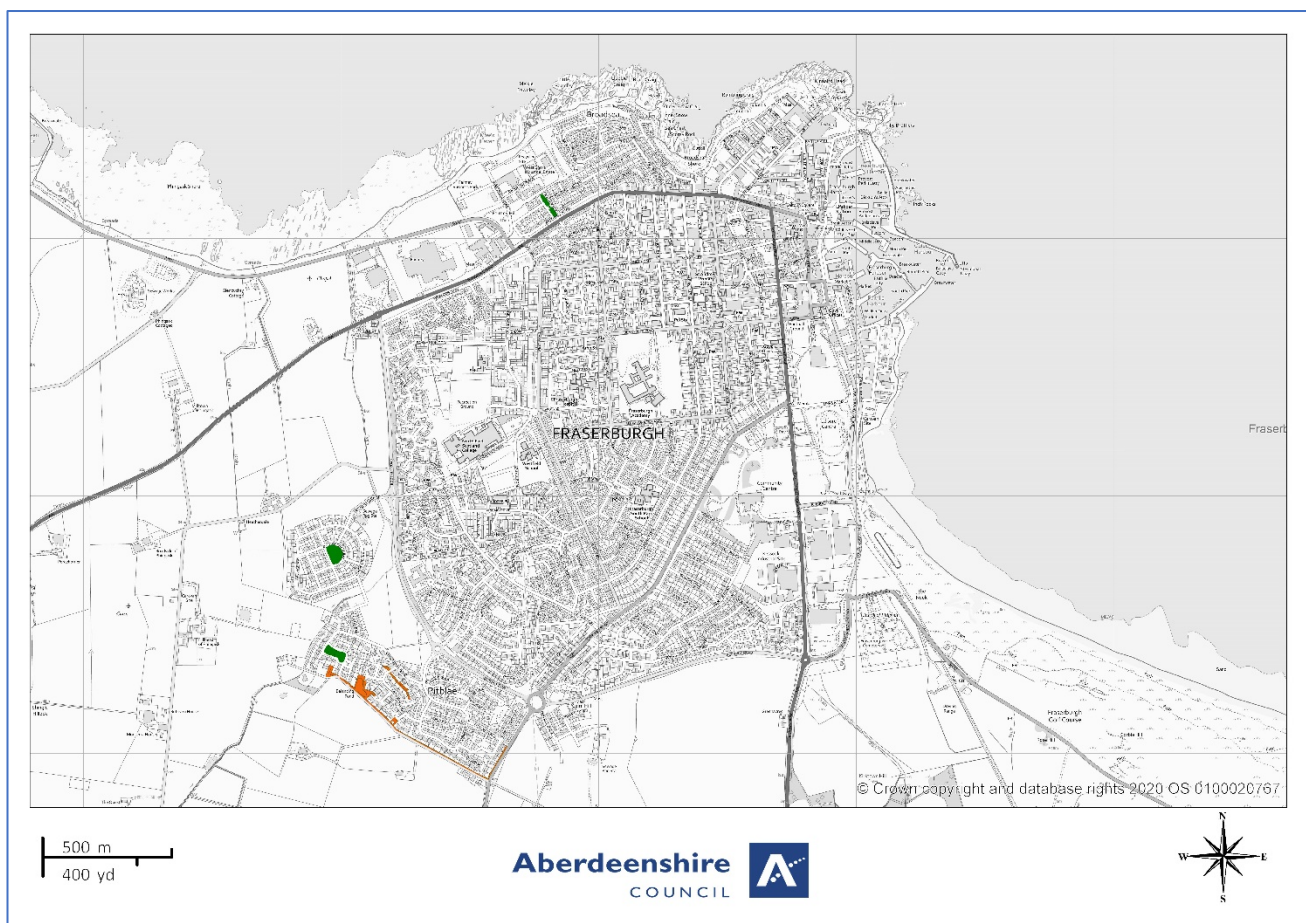
- Amenity Areas
- Green Corridors/Riparian Routes
- Churchyards, Cemeteries

Open Space Audit Update 2019: Fraserburgh

An update exercise was carried out in 2019 to account for new open spaces arising from major developments completed since the Open Space Audit 2010, and to address any known disparities/gaps in information. The scope of the update exercise did not include a review of the Open Space Audit 2010. The Audit update 2019 has been used to assist in the preparation of the Proposed Aberdeenshire Local Development Plan 2020.

This is an interim Audit. Whilst this information will feed into a future comprehensive Open Space Audit, at this stage there may be some auditing inconsistencies across settlements due to factors such as community interest, and landscape/topography influencing how open spaces are identified, particularly at and around the edges of settlement.

Allotments are excluded as these are audited separately as part of the Food Growing Strategy 2019-2030.



- | | | |
|---|---|---|
| ■ Public Parks and Gardens | ■ Schools/Institutions | ■ Amenity Areas |
| ■ Play Space | ■ Sports Areas | ■ Green Corridors/Riparian Routes |
| ■ Semi Natural Areas | ■ Allotments | ■ Churchyards, Cemeteries |
| ■ Other Functional Greenspace | | |