

From mountain to sea

Low Cost Shared Equity FOR SALE

17 Brighead Way, Inverbervie DD10 0AJ

2 bed semi-detached house

£116,000



Low Cost Shared Equity - Property Schedule

Description

2 bed semi-detached house

Price

£116,000

Floor Space

100 m²

Income Threshold

£43,000 or less.

Included in Sale

Washing machine, fridge/freezer, floor coverings and blinds.

Factoring Charge

£23 per month PMC Property Management.

Parking Arrangements

Driveway

Council Tax Band

Band C

Garden

Private front and rear garden.

Year Built

2013

Heating Type

Gas

Eligibility Criteria

See Guidance Notes for Eligibility Criteria.

Energy Performance Rating

Band B

Closing Date

Return applications as soon as possible. Applications will be assessed on a first come basis.

Disclaimer

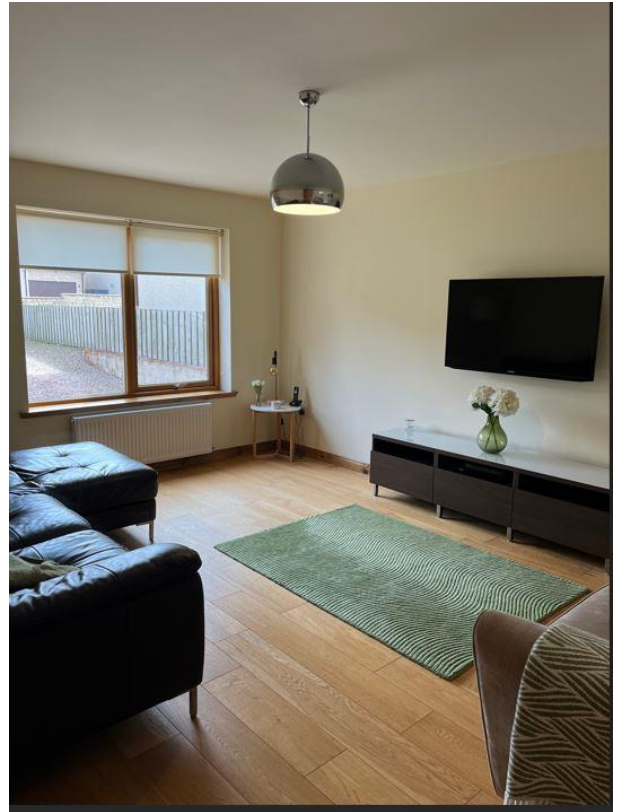
The information in this schedule regarding the specific property has been supplied by the owner and whilst every care has been taken in the preparation of this schedule and the information is believed to be correct, it does not warrant or constitute any offer or contract.

***Factoring fees may be subject to change and may require an initial deposit. Please discuss with your solicitor if nominated.**

Front of House



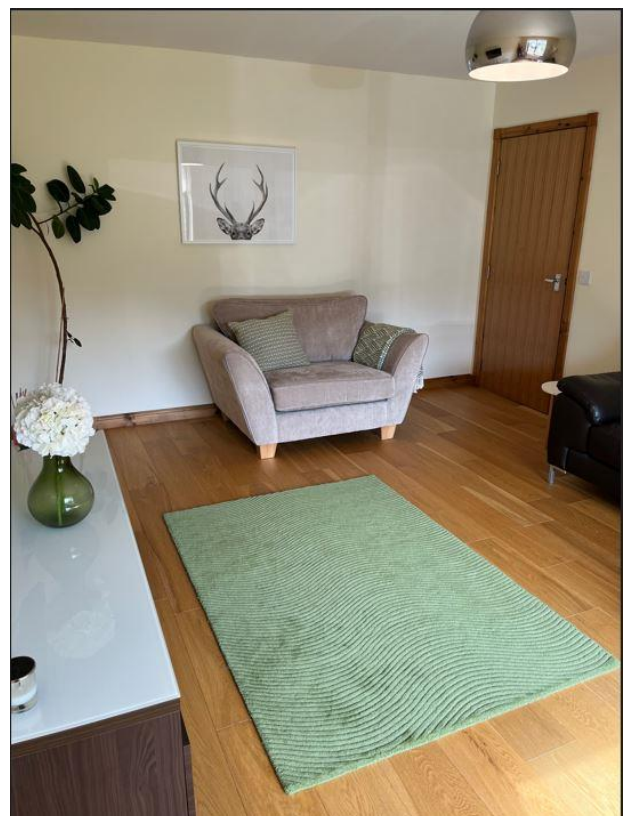
View of Living Room



Alternative View of Living Room



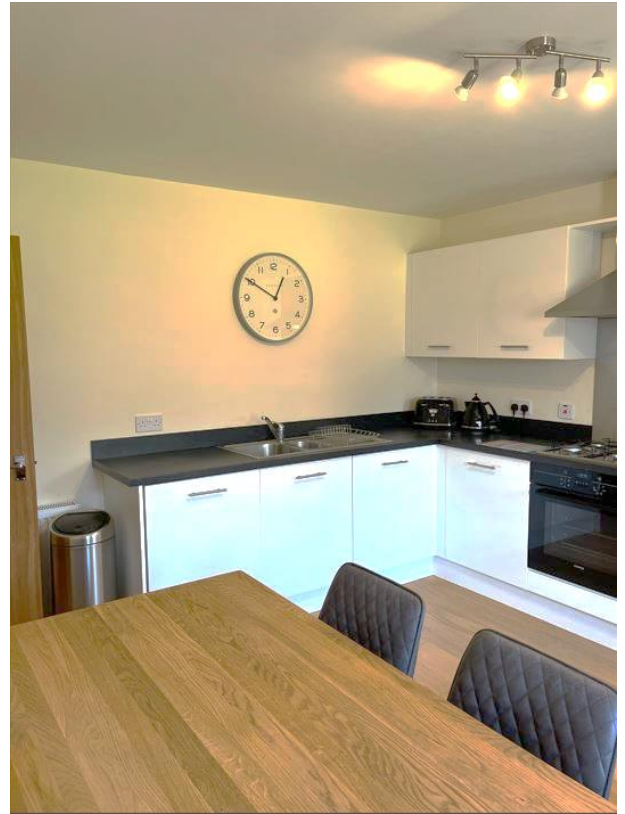
Alternative View of Living Room



Kitchen



Alternative View of Kitchen



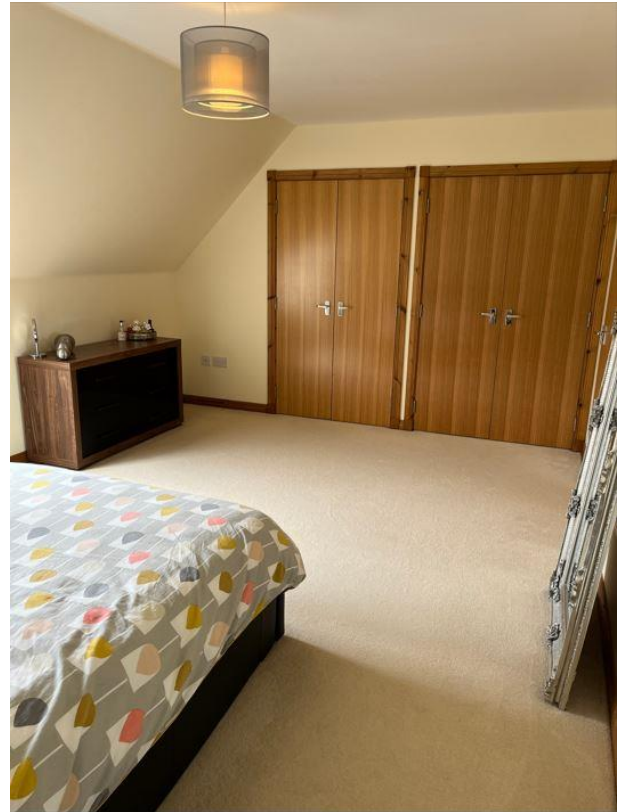
Dining Area



Bedroom 1



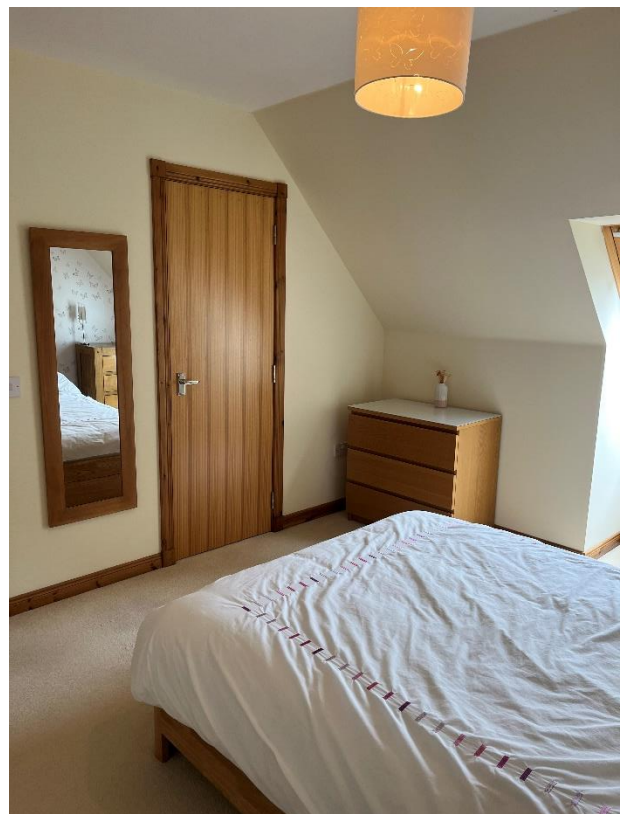
Alternative View of Bedroom 1



Bedroom 2



Alternative View of Bedroom 2



Bathroom



Alternative View of Bathroom



Back of the House



Back Garden



Location



Inverbervie is a coastal town approximately 11 miles south of Stonehaven and within commuting distance of both Aberdeen and Montrose. The town is well served by shops, a leisure centre and medical centre. Primary schooling is local with secondary education available at Mackie Academy in Stonehaven or at Mearns Academy in Laurencekirk.



Further Information

For further information please contact:
Development Officer - 01467 539457
LCHO@aberdeenshire.gov.uk