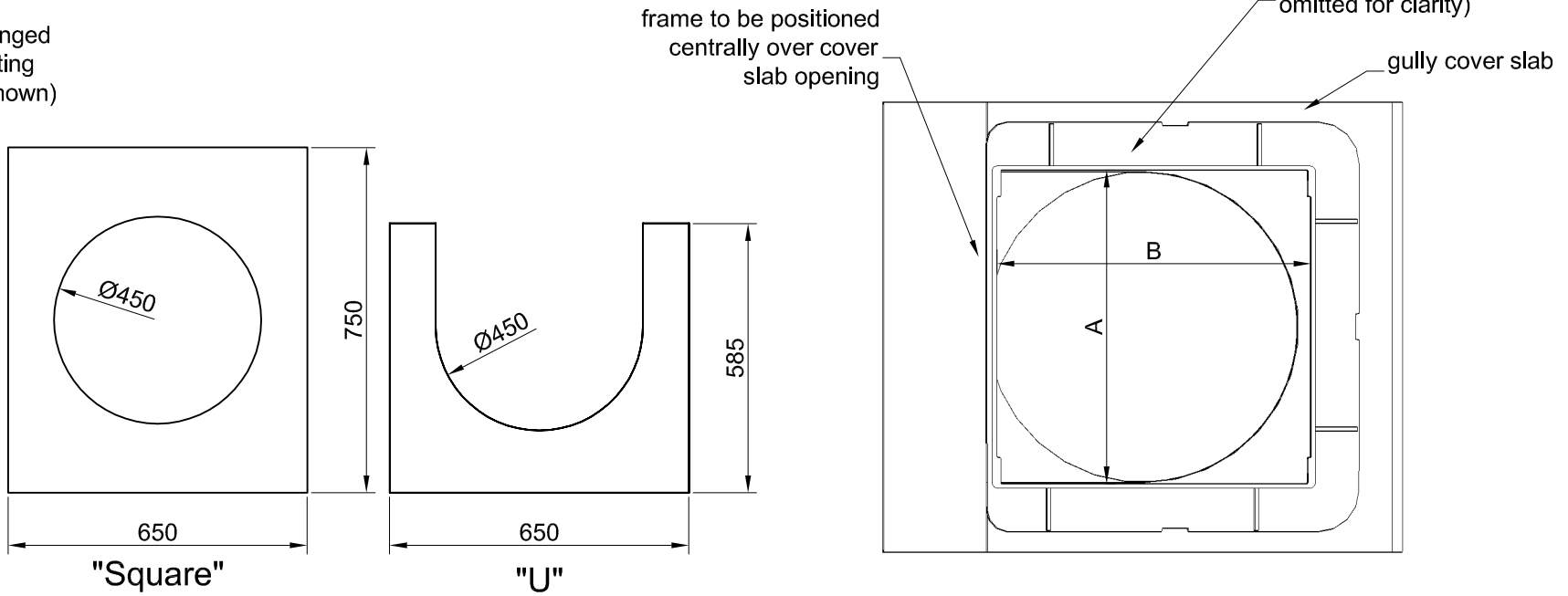
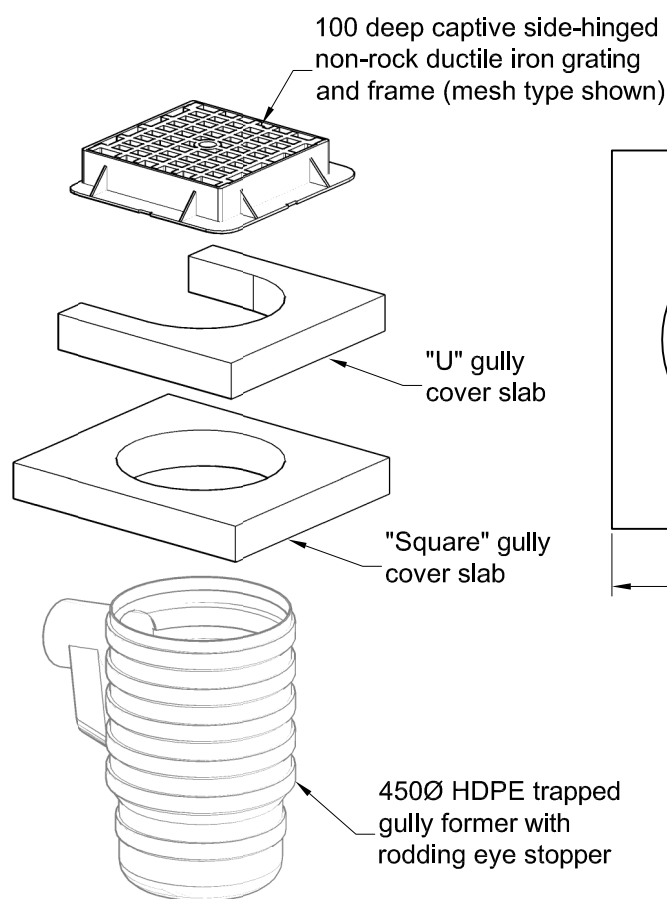


- NOTES:**
1. All dimensions in millimetres.
  2. Grating and frame to be at least Class D400 in accordance with BS EN 124 and be marked with kitemark. Grating shall meet requirements for Type R classification in accordance with HA 102/00. Hinge must be located on side nearest to approaching traffic.
  3. Gully cover slabs to be 100 thick and comply with BS 5911-6.
  4. Gully former to have current HAPAS certificate.
  5. Concrete surround to gullies shall fill the whole void between the gully pot and the face of the excavation. The concrete shall be compacted by a vibrating poker to remove voids.
  6. The concrete gully slab shall not overhang the inner rim of the gully pot by more than 30mm at any point.
  7. Concrete surround to outlet pipe to continue to a depth of cover of at least 900 below earthworks outline.
  8. Bedding materials shall comply with the requirements of HA 104/09 and shall be laid strictly in accordance with the manufacturers' recommendations.
  9. Accurate setting out for position, depth and crossfall will be necessary to comply with this detail. Packing materials shall not be permitted in new gully installations.
  10. The Contractor/ Developer shall provide a pump or gully emptier vehicle and operator(s) to enable a complete internal inspection of the gully at the end of the maintenance period at a time and date agreed with the Engineer's Representative. Costs shall be borne by the Contractor/ Developer.



**GULLY COVER SLAB**

Clear opening dimension requirements:  
 $445 \leq A \leq 455$   
 $445 \leq B \leq 455$

Rev	Amendment	Date

	Standard Details	DRAINAGE	Scale: Not to scale
	TRAPPED STREET GULLY (KERBSIDE)		
			Drawing Number: <b>SD 5/02</b>