



From mountain to sea

SCHOOL TRAVEL PLANS:

Information Guide for Schools in Aberdeenshire

[DATE]



CONTENTS

Why do we need a School Travel Plan? 3

- Facts and Figures
- Effects
- Outcomes

The School Travel Plan 4

- What is it?
- Links to the Curriculum and other initiatives
- How will travel plans benefit our schools?

Your School Travel Planning Officer 5

Developing your School Travel Plan 6

- Step-by-step
- Action Plan

Activity	Description	Age	Equipment	CFE outcomes
Developing a School Travel Plan	To develop a School Travel Plan will require pupils to use the following skills: communication, numeric, literacy and ICT throughout the plans development	All		Health and Wellbeing, Social Studies Language Mathematics, Technologies

For more detailed information on CFE links see back of this booklet.



Why do we need a School Travel Plan?

Do you feel that demand for parking outweighs availability leading to congestion?

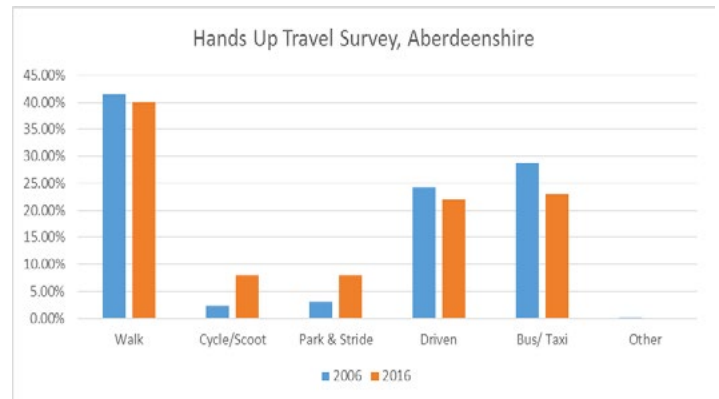
- Are you concerned about air quality around the school?
- Do you feel that the school could help pupils and families live more healthily?
- Are there concerns over routes to school?

If you answer to ANY of these is YES, a School Travel Plan can help!

Facts and figures

- UK Road traffic volumes have nearly doubled over the last 20 years.
- At 8:50 am, 1 in 5 cars on the road is taking a child to school. ¹
- 22% of pupils are currently being driven to school. This is a decrease from 24% since 2006 and a step in the right direction. ²
- Cycling levels have increased over the same period from 2.3% to 8%.

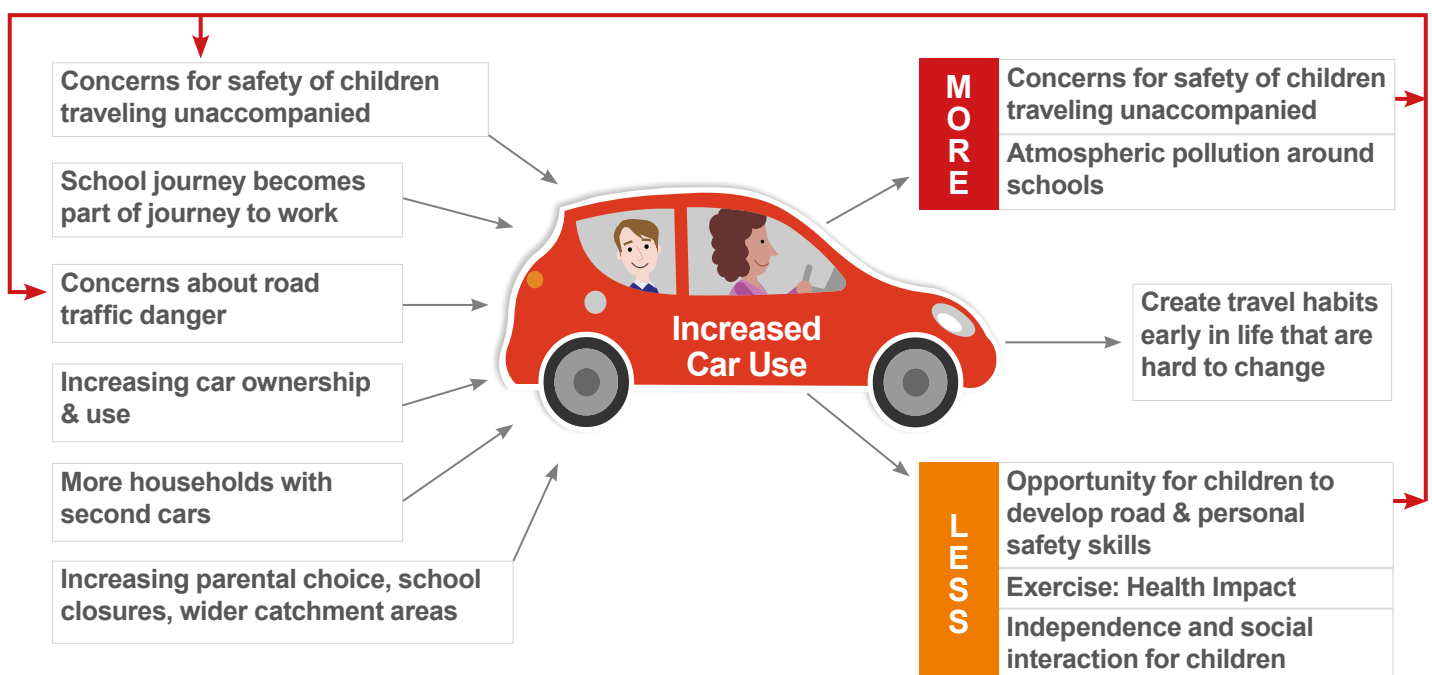
Road safety is often mentioned as the key barrier to walking or cycling to school. However this leads to more pupils being driven, increasing the safety risk. It is vital we break this cycle.



¹ National Travel Survey, 2007/2009

² Sustrans Hands Up Survey Scotland, Aberdeenshire Results 2006-2016

Effects





Outcomes

It is encouraging to see these figures slowly heading in the right direction, but schools continually face new challenges which affect how pupils travel: change in school roll, expanding catchments and new families making new journeys all affect travel patterns. Developing a STP is a fantastic tool to identify travel patterns, set aims and targets and promote messages to families. It is a great learning tool and fits well into the curriculum.

A STP is an opportunity to **identify** and **promote practical alternatives** that meet the varied needs of the school community by encouraging parents, pupils and staff to consider different ways of travelling to school.

THE SCHOOL TRAVEL PLAN

What is it?

A document that:

- Summarises current travel patterns and traffic problems
- Sets targets
- Identifies solutions
- Addresses all aspects of the journey to school and encourages
 - Walking
 - Cycling
 - Use of public transport
 - Better management of remaining 'school run' vehicles



Links to Curriculum for Excellence

All schools in Scotland are encouraged to develop their own School Travel Plan and this should be seen as a good learning opportunity.

CFE Outcomes addressed through developed of an STP

- Health and Wellbeing
- Social Studies
- Language
- Mathematics,
- Technologies

To develop a School Travel Plan, it will require pupils to use the following skills: communication, numeric, literacy and ICT throughout the plans development



STP also link into other initiatives such as:

- Eco Schools
- Rights Respecting Schools
- Health Promoting Schools
- Road Safety Education
- Active Schools

How will travel plans benefit our schools?

STP's look to address congestion and increase active travel.

Benefits on an STP include:

- Reduce traffic and congestion increasing safety
- Help pupils develop road safety skills, increasing independence and self-esteem
- Increase travel awareness and widen choices
- Improve health and fitness
- Establish safer walking and cycling routes
- Reduce pollution and improve air quality
- Improve community partnership

YOUR SCHOOL TRAVEL PLANNING OFFICER

If support is required your School Travel Planning Officer (STPO) will be a point of contact for the schools.

Your STPO can:

- Advise and assist schools to develop a STP
- Attend school meetings
- Assist with educational initiatives and practical activities such as workshops
- Provide information / advice/ materials
- Liaise with school transport organisers and local officers.
- Promote best practice within schools and be aware of internal and external funding.



DEVELOPING YOUR SCHOOL TRAVEL PLAN

Step-by-step

Developing a STP can be a quick and simple; the actual content of your STP will vary according to the specific needs of your school. Your STP must be a living document, which will change with time.

The development of your STP could follow the following pattern:

- 1 THE TRAVEL PLAN COMMITTEE.** Group of people to take forward the plan.
- 2 CONSULTATION.** Discuss with different school users over the journeys they take to school. Are there any barriers? Surveys, interviews, mapping workshops are all good ways to gather data.
- 3 USING MAPS.** Useful tool to gather information as well as displaying results. Maps can be used to: help pupils plan routes, discuss areas of road safety concern, identify congested areas and alternative parking locations.
- 4 ACTION PLAN.** From your consultation, problems relating to the journey to school will have been identified. Your action plan should set to address these issues. For example: safety at the school gate, target, to reduce the number of cars at the school gate
- 5 SOLUTIONS.** This is how you aim to achieve your targets set in your action plan. TO reduce congestion, you may decide to run a Park Smart Campaign, identify a park and stride opportunity, promote alternative modes of transport.
- 6 DESIGN PLAN/ PROMOTION.** Pull all this information together into a plan to display to school users. See template for guidance on this. Promote to school user: home to families, on school website, hand out in induction packs.

A good plan could include the following headings (see template on STP Page):

Brief description of the school: number of pupils, location, catchment area etc

The STP: what it is and what will be the benefits to your school?

Evidence of consultation: School travel surveys. These can be done in various ways, from in-class hands-up surveys to more complex printed questionnaires (see the Further Resources section). HUS results. Map with information.

Action plan and Ideas:

- Proposed measures
- Programme for implementation: when / what / who is responsible?
- Plans for monitoring and review / reporting: how / who / when? - annual updates

Action Plan

Target	How to Achieve this target	Who's Responsible	Timeline (Month & Year)	Progress
To reduce congestion at the school gate	Run a park smart campaign	School and pupil council		
	Identify and promote park and stride options,	School and pupil council		
	Promote alternative transport options	School and pupil council		

Your target has to be measurable so you know whether you have achieved it or not. Traffic surveys or HUS are useful.

Possible Initiatives

CYCLING

- Cycle Training
- Cycle Trains
- Cycle Maintenance
- Cycle Permits (helmets, ground rules, responsibilities)
- Shelters/Racks
- Reward Scheme



WALKING

- Walking Buses or Groups
- Traffic Trails
- Incentives
- WOW scheme
- Pedestrian skills training
- Walking Days
- High visibility vests and / or stickers
- Park and Stride

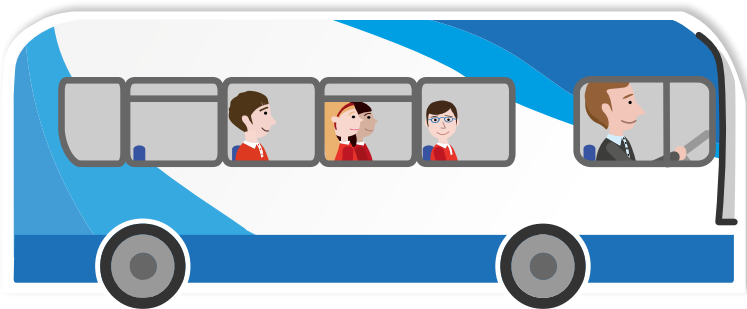


RAISING AWARENESS

- Post STP on school notice board/website
- Distribute leaflets on STP
- STP information in induction packs
- Tie in with one-off events
- Official launch involving the media
- Encourage press to cover events
- Target all staff i.e. catering / maintenance / visiting staff etc

EDUCATION

- Curriculum
- Junior Road Safety Officers
- Target transitional pupils for methods of getting to secondary or new school
- Day trips for rural pupils to urban environment
- Reading bus timetables & journey planning
- Personal safety skills
- Work with other groups e.g. after-school clubs



BUSES

- Escorted cycle / walk to bus stop
- Buddy scheme
- Code of Behaviour

ENGINEERING WORKS

- Speed surveys, crossing assessments
- Express concerns to Road Officers
- Traffic Counts
- Identify alternative routes rather than traffic calming
- Maintenance teams can do small road improvements
- Importance of school suggestions

PARENTS

- Car Sharing – organised by parents
- Inform of health benefits of walking / cycling vs. driving & perceived stranger danger etc.
- Park Smart Campaign
- Traffic Survey; send letters out to parents who park cars near school



FURTHER RESOURCES

Visit Aberdeenshire Council School Travel Plan pages for more document; surveys, templates, case studies and great initiatives on bringing active and sustainable messages into the classroom.

http://www.aberdeenshire.gov.uk/schools/information/travel_plan.asp

For further information contact

Infrastructure Services
Aberdeenshire Council
Woodhill House,
Aberdeen, AB16 5GB

Tel: 01467 536929

Email: strategyunit@aberdeenshire.gov.uk

