



From mountain to sea

Empty Property Matchmaker Scheme FOR SALE

Upper Cabra Farm Cottage, Fetterangus, AB42 4LU

3 bedroom bungalow

Open to offers



Empty Property Matchmaker Scheme - Property Schedule

Description	Condition of property
3 bed bungalow set in a rural location outside Fetterangus	Needs major work. This property would benefit from complete renovation or demolition and rebuild
Asking Price	Open Market Valuation (if applicable) and Estate Agent if advertised
Open to offers	£100,000 approx
Heating Type	Energy Performance Rating
Coal/wood	None
Council Tax Band	Garden
Band C	Large
Included in sale	Additional Information
n/a	
Interested?	Home Report
Please complete an Interested Buyer Registration form at Buying through Matchmaker Scheme - Aberdeenshire Council and click on "Register your Interest"; or email your interest emptyhomes@aberdeenshire.gov.uk if you already have registered a form with us	Please note: Aberdeenshire Council do not hold any home reports for any properties advertised for sale. If you are interested in a property, please fill in the online form to register your interest and we will then pass your details on to the seller to progress.

The information in this schedule regarding the specific property has been supplied by the owner and whilst every care has been taken in the preparation of this schedule and the information is believed to be correct, it does not warrant or constitute any offer or contract.

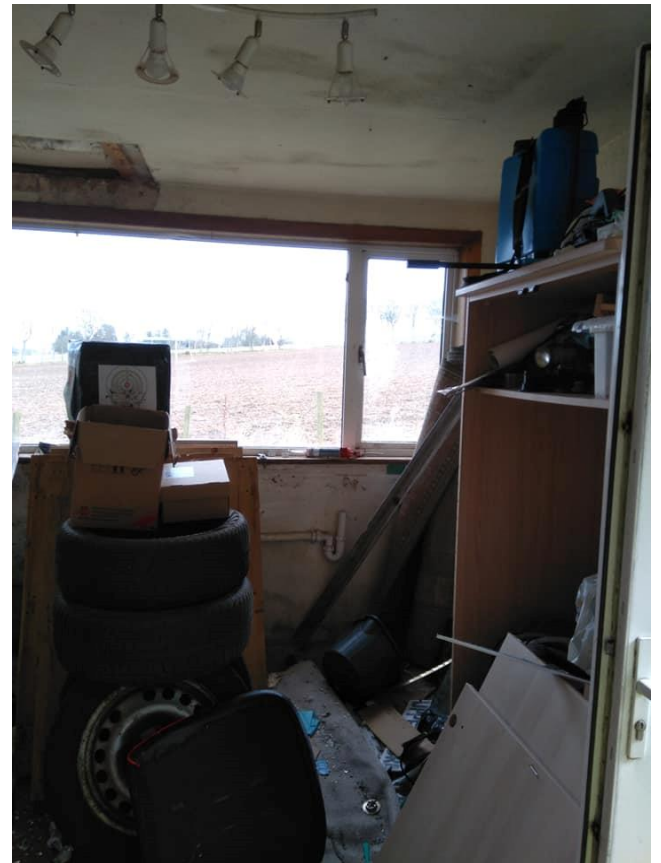
Living Room



Kitchen



Alternative View of Kitchen



Bedroom



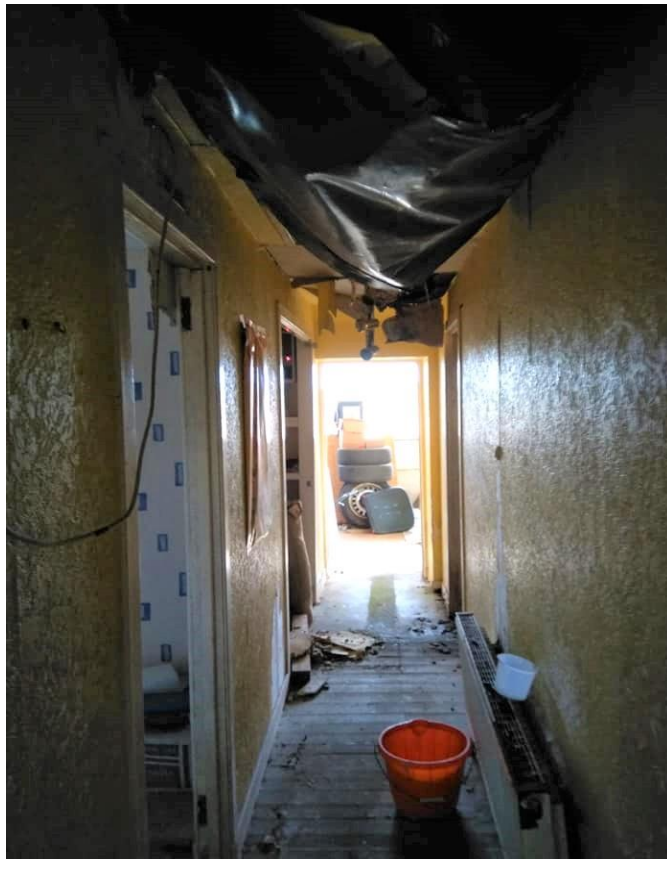
Bedroom



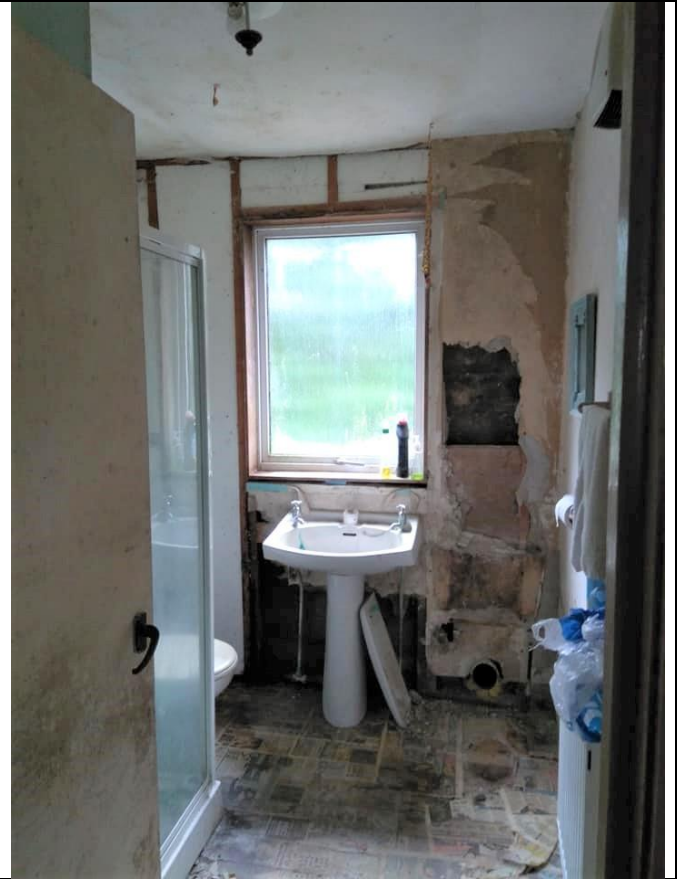
Bedroom



Hallway



Bathroom



Garden area



Side view of house and garden area



View from the front of house



Alternative View of House



Location



Fetterangus is a small village in Aberdeenshire located just to the north of [Mintlaw](#). Fetterangus is often called "Fishie, although the origin of this is unknown. It has a population of 400, and the village has an active community association. The association has erected a community owned windturbine near the village to earn an income for community projects. Fetterangus has its own primary school whilst the secondary is 2 miles away in Mintlaw. A nearby visitor attraction is Drinnie's Observatory, which was built in 1845 and offers attractive views over the Buchan countryside for miles in all directions



Further Information

For further information please contact:

Development Officer - 01467 533027

emptyhomes@aberdeenshire.gov.uk