

From mountain to sea

Empty Property Matchmaker Scheme FOR SALE

39 Port Henry Road, Peterhead, AB42 1LA

**4 Bedroom Detached House
£110,000**



Empty Property Matchmaker Scheme - Property Schedule

Description

4 bedroom detached house.

Condition of Property

Needs minor work.

Asking Price

£110,000

Open Market Valuation (if applicable)

£120,000

Estate Agent (if advertised)

N/A

Heating Type

Gas

Energy Performance Rating

Band D

Council Tax Band

Band E

Garden

Small back garden.

Included in Sale

White goods. Fully furnished. Brand new carpets.

Additional Information

Recent full rewiring of electrics, gas, and damp course. Newly redecorated. Energy efficiency lighting. May require modernization in kitchen and bathroom depending on preferences.

Interested?

If you are interested in this property please fill out the Interested Buyer Registration form on www.aberdeenshire.gov.uk/housing/matchmaker-scheme-buyers/ and select "Register your Interest".

Email emptyhomes@aberdeenshire.gov.uk if you already have registered a form with us.

Home Report

Please note: Aberdeenshire Council do not hold any home reports for any properties advertised for sale. If you are interested in a property, please fill in the online form to register your interest and we will then pass your details on to the seller to progress.

Disclaimer

The information in this schedule regarding the specific property has been supplied by the owner and whilst every care has been taken in the preparation of the schedule and the information is believed to be correct, it does not warrant or constitute any offer or contract.

Living Room



Alternative View of Living Room



Kitchen



Alternative View of Kitchen



Bedroom 1



Alternative View of Bedroom 1



Bedroom 2



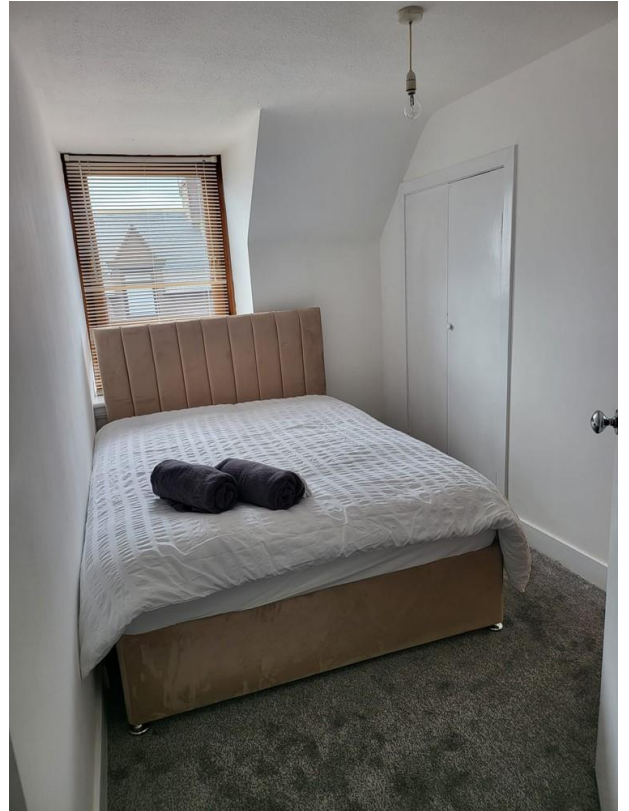
Alternative View of Bedroom 2



Bedroom 3



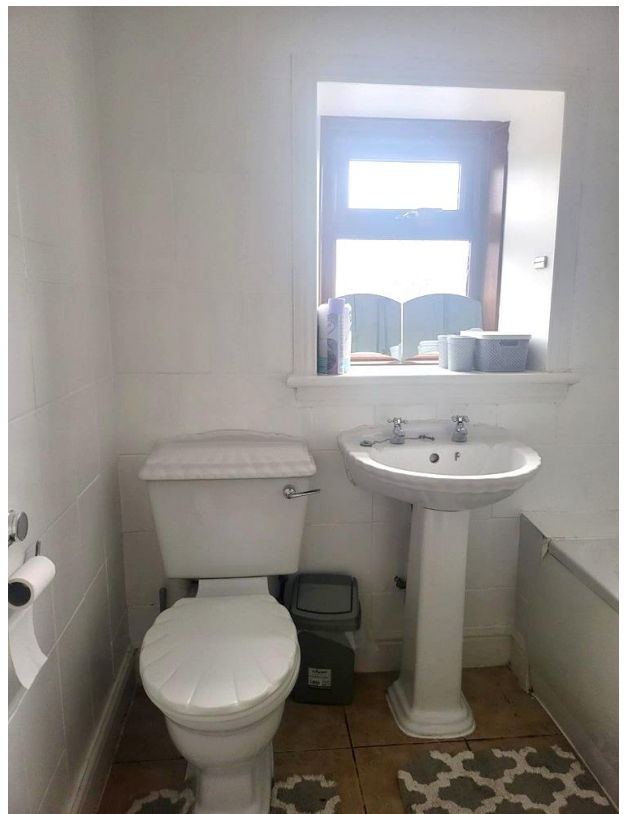
Bedroom 4



Hallway



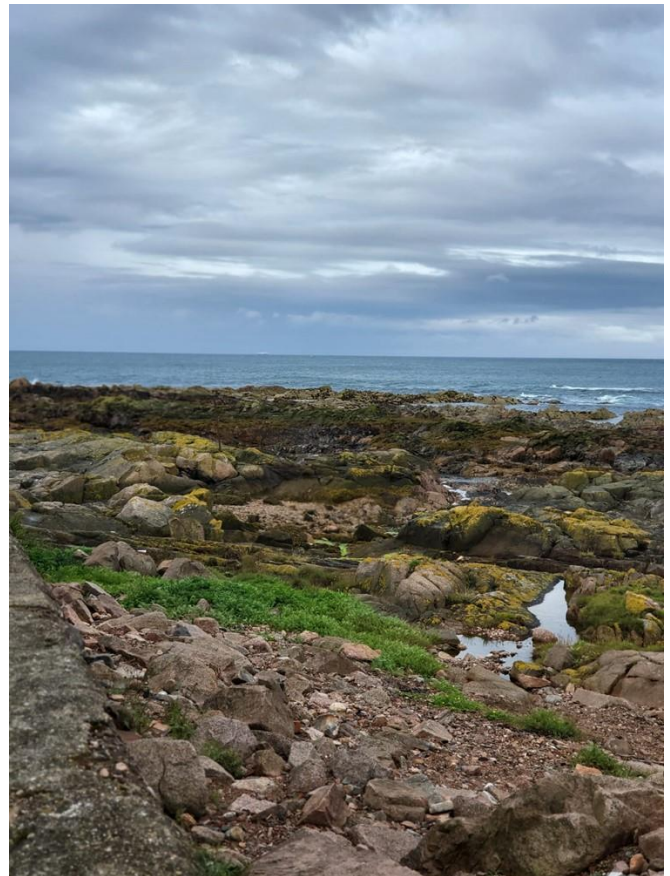
Bathroom



Front Entrance



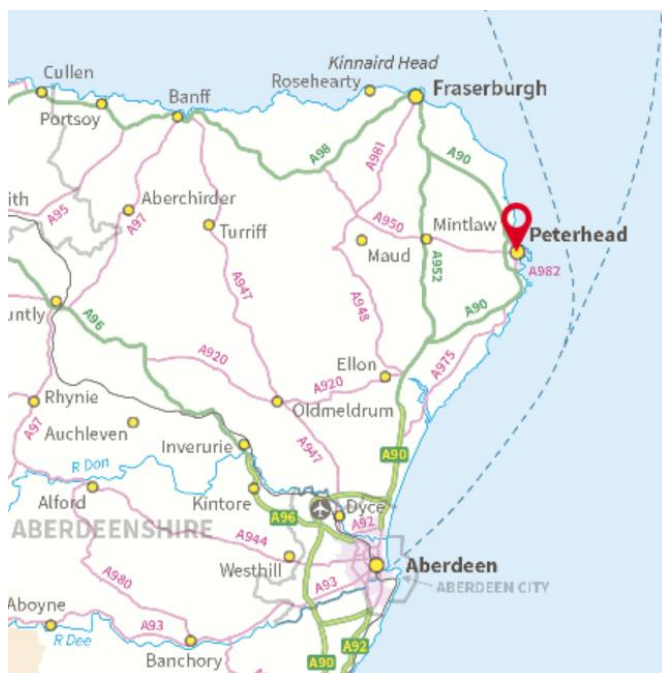
View of Nearby Area



Back Entrance



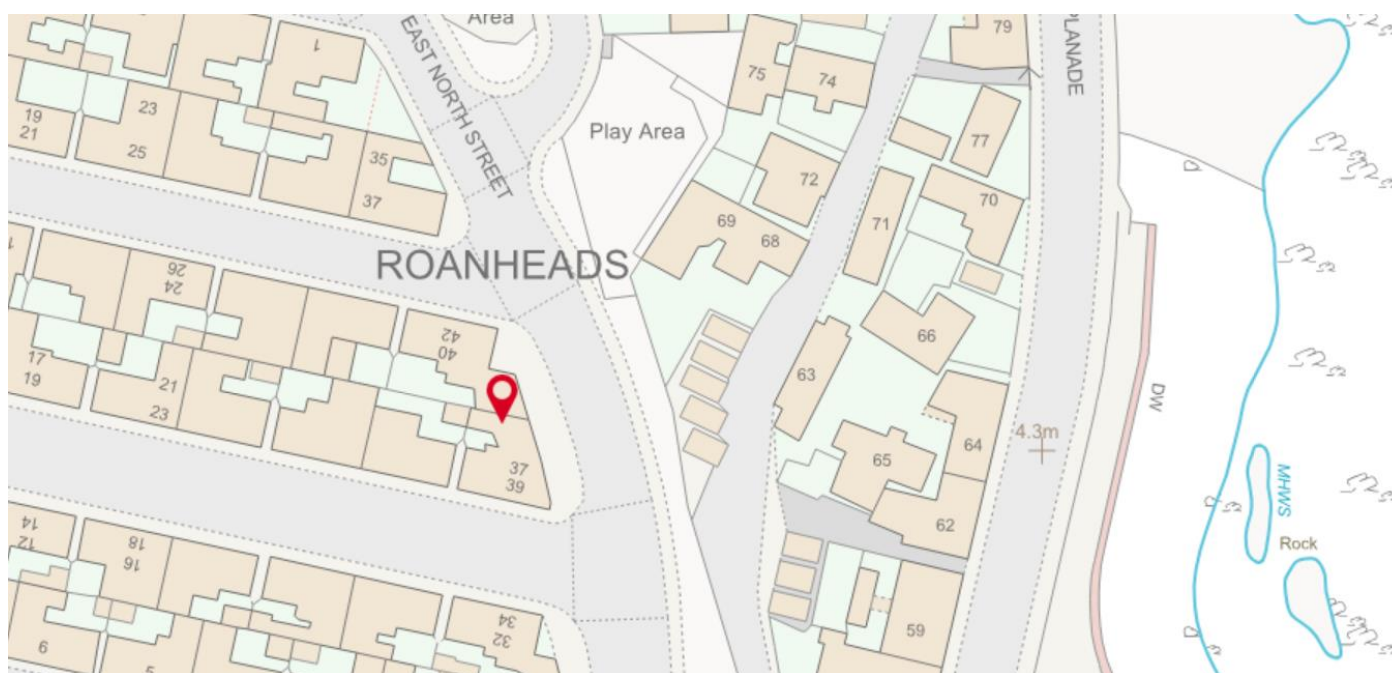
Location



Known locally as the 'Blue Toon', the coastal town of Peterhead lies in the Northeast of Aberdeenshire. Built around the fishing industry it has one of the biggest fishing ports in Europe and is conveniently situated near two other major settlements; only 32 miles from Aberdeen and 17 miles from Fraserburgh.

Peterhead offers all the amenities needed including shops, bars, restaurants, health care services, and provides several educational institutions, including primary schools and a secondary school. For leisure activities there is a swimming pool, a gym, museums, sports hall, a library, a cinema, and a theatre.

Dotted along the picturesque coastline there are quaint villages and beaches, great for a day out exploring. Outdoor enthusiasts can also indulge in activities such as golfing at the world's 18th oldest golf club, fishing, and a variety of water sports, making Peterhead ideal for both relaxation and adventure.



Further Information

For further information please contact:
Development Officer – 01467 533027
emptyhomes@aberdeenshire.gov.uk