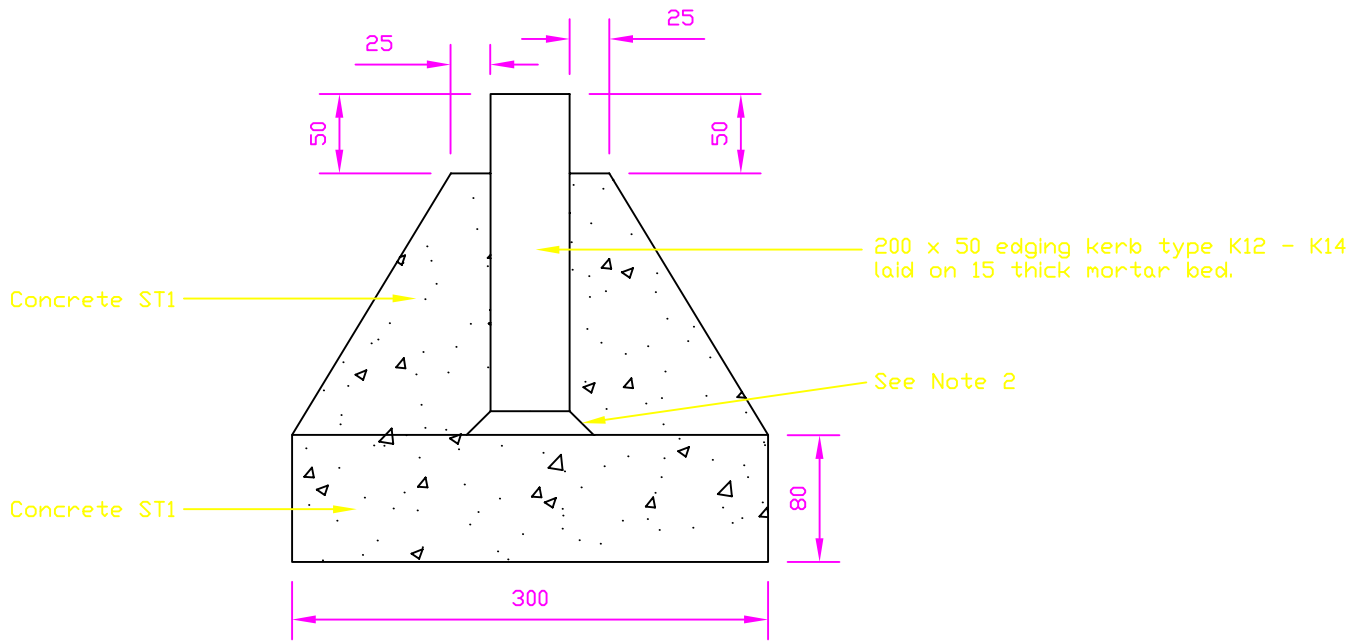


NOTES

1. All dimensions are in millimetres unless otherwise stated.
2. Concrete base and haunching may be formed in one, and mortar bed omitted.
3. Kerbs to be laid on 1 : 3 cement / sand mortar bed as per BS 7263



Kerb Type	Reference BS 7263 Part 1 1994	Type	Dimensions
K12	ER	Round Top Edging	50 x 200
K13	EF	Flat Top Edging	50 x 200
K14	EBN	Bullnosed Edging	50 x 200

No.	Date	Description
		AMENDMENTS

HIGHWAY CONSTRUCTION DETAILS

EDGE OF PAVEMENT DETAILS

PRECAST CONCRETE EDGING
K12 - K14

Drawing No.

B71