

Settlement Summary: Cruden Bay

Population: 1587

Observations (of Community Council)

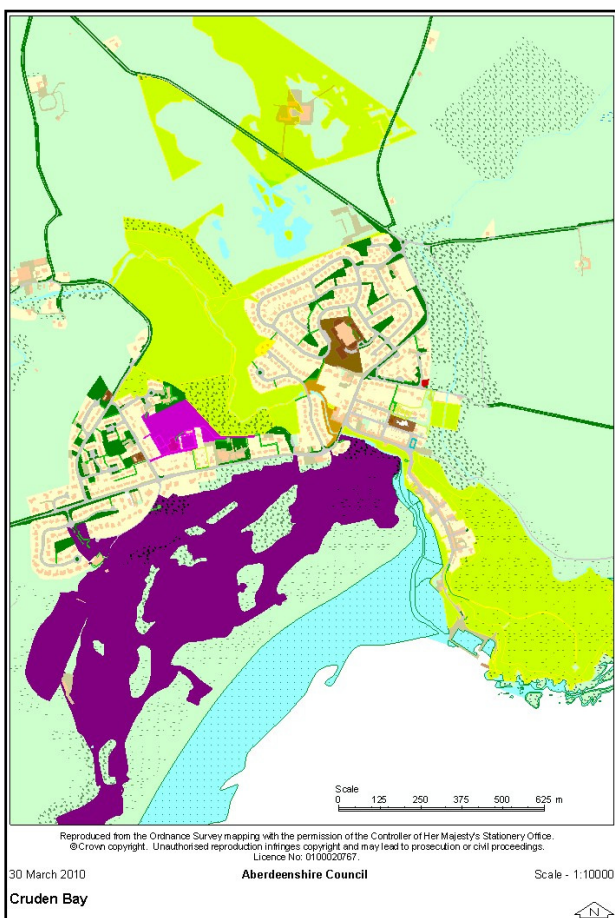
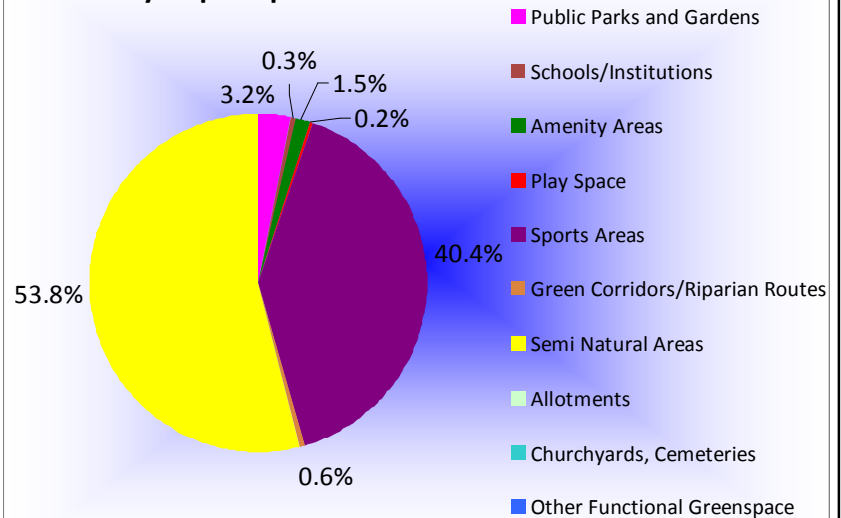
None received.

Green Network Links

Details of the path network around the village are described in the Aberdeenshire Core Paths Plan. In the event of further development in the area, it will be important to create and maintain links to the surrounding countryside, and through to the coast where feasible.

Within the village, installation of seating and bins on the riparian route by Morrison Place could encourage access; and within the semi-natural greenspace adjoining John Buchan Drive/Cantlay Court, the paths would benefit from improvement, or retention as linkages in the case of new development.

Cruden Bay - Open Spaces Audited



Open Space Requirements

In terms of amenity and play space within Cruden Bay, opportunities for improvements have been identified at the following sites:

- Station Road amenity area (seating, and planting)
- Castle Road play area (additional equipment)
- Morrison Place play area (benches, bins and improved drainage)

Due to inclusion of the golf course, the disused brick and tile works, and other semi-natural areas around the village, total open space currently exceeds the built up area of the village, at over 120%.

As sites identified for development in the Local Plan include the brick and tile works, this high ratio will decrease. However, with the provision of a community park as part of the development (as specified in the Aberdeenshire Local Plan), there is an opportunity to enhance public access and biodiversity throughout the area, as well as diversify sporting and recreation opportunities in the village, currently largely accounted for by the golf course.

- | | | |
|-----------------------------|----------------------|---------------------------------|
| Public Parks and Gardens | Schools/Institutions | Amenity Areas |
| Play Space | Sports Areas | Green Corridors/Riparian Routes |
| Semi Natural Areas | Allotments | Churchyards, Cemeteries |
| Other Functional Greenspace | | |

Open Space Audit Update 2019: Cruden Bay

An update exercise was carried out in 2019 to account for new open spaces arising from major developments completed since the Open Space Audit 2010, and to address any known disparities/gaps in information. The scope of the update exercise did not include a review of the Open Space Audit 2010. The Audit update 2019 has been used to assist in the preparation of the Proposed Aberdeenshire Local Development Plan 2020.

This is an interim Audit. Whilst this information will feed into a future comprehensive Open Space Audit, at this stage there may be some auditing inconsistencies across settlements due to factors such as community interest, and landscape/topography influencing how open spaces are identified, particularly at and around the edges of settlement.

Allotments are excluded as these are audited separately as part of the Food Growing Strategy 2019-2030.

There are no updates to the Open Space Audit 2010.