

## Settlement Summary: Fyvie

Population: 483

### Observations (of Community Council)

- The area behind the Health Centre is neglected, but wish to see this turned back into allotments or a garden area
- Sports field: higher fence to road side should be considered if ball sports are increased.

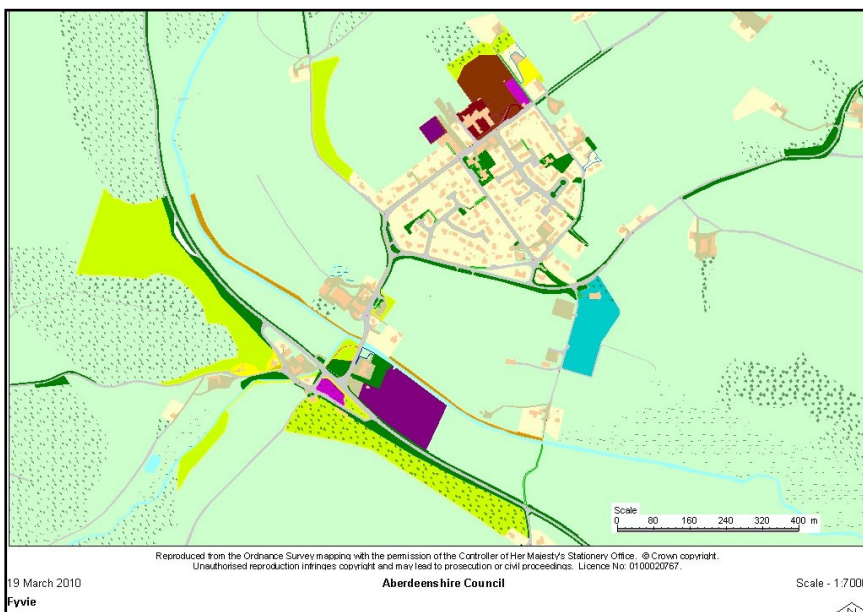
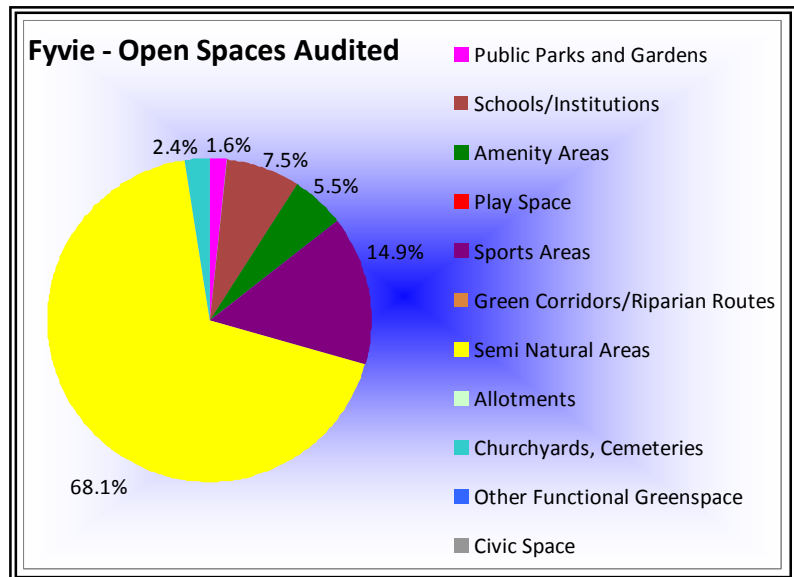
### Green Network Links

Although within the village centre there are limited green networks, the rural nature of Fyvie provides for good access to the surrounding countryside; for example, from beyond the bowling green. Any future development within the village should protect and enhance these linkages with surrounding rural areas.

### Open Space Requirements

There appears to be an opportunity here for local residents to develop either a community garden or allotment area behind the Health Centre. This could be progressed through formation of a Trust or allotment society e.g. as at Banchory or Huntly. The ownership of the land behind the health centre is unknown, so any change of use may require discussions between the community and land owner.

For a village of its size, Fyvie has a good range of open space, the high levels of semi natural areas being characteristic of a rural village of this nature. The only play area within the village is at the school, where scope for any further expansion is limited. However, the benches and fences were noted as in need of repair. There may be an opportunity to create more diverse recreational opportunities at the sports field to the south of the village, although having regard to the community's comments concerning road safety. Any improvements here however, would be a matter for the private owners.



- Public Parks and Gardens
- Play Space
- Semi Natural Areas
- Other Functional Greenspace

- Schools/Institutions
- Sports Areas
- Allotments

- Amenity Areas
- Green Corridors/Riparian Routes
- Churchyards, Cemeteries

## Open Space Audit Update 2019: Fyvie

An update exercise was carried out in 2019 to account for new open spaces arising from major developments completed since the Open Space Audit 2010, and to address any known disparities/gaps in information. The scope of the update exercise did not include a review of the Open Space Audit 2010. The Audit update 2019 has been used to assist in the preparation of the Proposed Aberdeenshire Local Development Plan 2020.

**This is an interim Audit.** Whilst this information will feed into a future comprehensive Open Space Audit, at this stage there may be some auditing inconsistencies across settlements due to factors such as community interest, and landscape/topography influencing how open spaces are identified, particularly at and around the edges of settlement.

Allotments are excluded as these are audited separately as part of the Food Growing Strategy 2019-2030.

**There are no updates to the Open Space Audit 2010.**