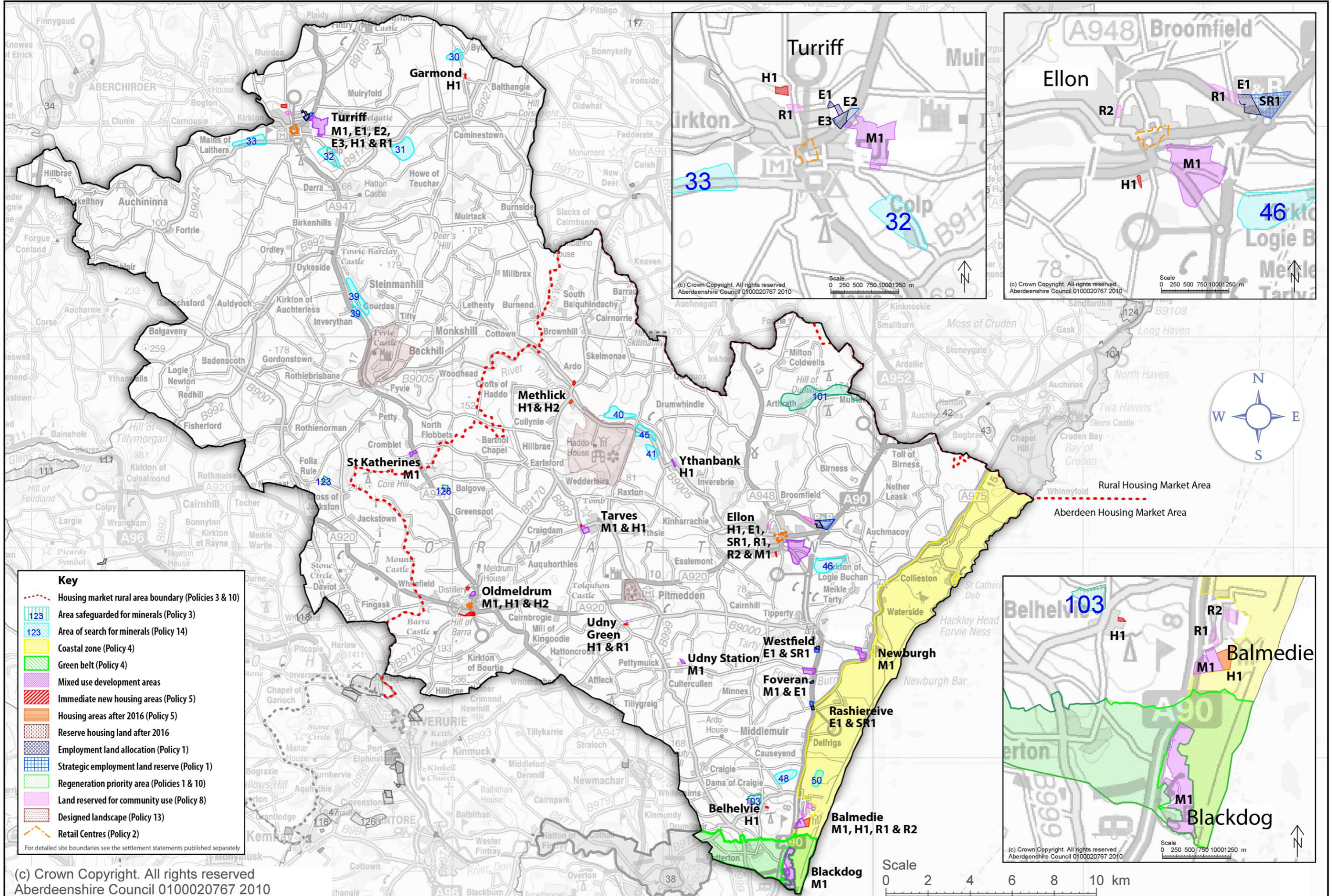


Aberdeenshire Local Development Plan 2010 Proposals Map ~ Formartine



- Key**
- - - Housing market rural area boundary (Policies 3 & 10)
 - 123 Area safeguarded for minerals (Policy 3)
 - 123 Area of search for minerals (Policy 14)
 - Coastal zone (Policy 4)
 - Green belt (Policy 4)
 - Mixed use development areas
 - Immediate new housing areas (Policy 5)
 - Housing areas after 2016 (Policy 5)
 - Reserve housing land after 2016
 - Employment land allocation (Policy 1)
 - Strategic employment land reserve (Policy 1)
 - Regeneration priority area (Policies 1 & 10)
 - Land reserved for community use (Policy 8)
 - Designed landscape (Policy 13)
 - Retail Centres (Policy 2)
- For detailed site boundaries see the settlement statements published separately

(c) Crown Copyright. All rights reserved
Aberdeenshire Council 0100020767 2010

Scale
0 2 4 6 8 10 km

