



From mountain to sea

Empty Property Matchmaker Scheme FOR SALE

1 Tough Avenue, St. Fergus, AB42 3GB
3 bedroom detached bungalow

Offers over £245,000



Empty Property Matchmaker Scheme - Property Schedule

Description

3 bedroom wheelchair accessible detached bungalow. Ensuite, utility room and sunroom. Parking suitable for four cars.

Condition of Property

Good condition

Asking Price

Offers over £245,000

Open Market Valuation

£250,000

Estate Agent

Aberdein Considine, Queen Street, Peterhead
[1 Tough Avenue, St. Fergus | Aberdein Considine](#)

Heating Type

Gas

Energy Performance Rating

Band C

Council Tax Band

Band E

Garden

Enclosed garden. Easily maintained.

Included in Sale

Floor coverings, white goods, curtains, and light fittings

Additional Information

Ramped access to rear door. Outside electric power point. Garage finished with plasterboard and has a radiator fitted.

Interested?

If you are interested in this property please fill out the Interested Buyer Registration form on www.aberdeenshire.gov.uk/housing/matchmaker-scheme-buyers/ and select "Register your Interest".

Email emptyhomes@aberdeenshire.gov.uk if you already have registered a form with us.

Home Report

Please note: Aberdeenshire Council do not hold any home reports for any properties advertised for sale. If you are interested in a property, please fill in the online form to register your interest and we will then pass your details on to the seller to progress.

Disclaimer

The information in this schedule regarding the specific property has been supplied by the owner and whilst every care has been taken in the preparation of the schedule and the information is believed to be correct, it does not warrant or constitute any offer or contract.

Living Room



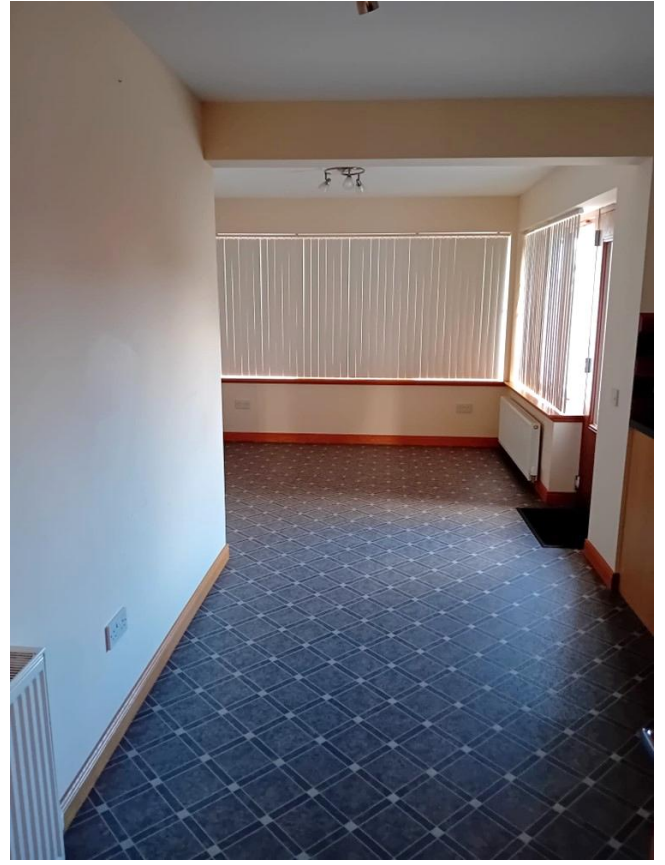
Kitchen



Alternative View of Kitchen



Sunroom



Bedroom 1



Bedroom 2



Bedroom 3



Bathroom



Alternative View of Bathroom



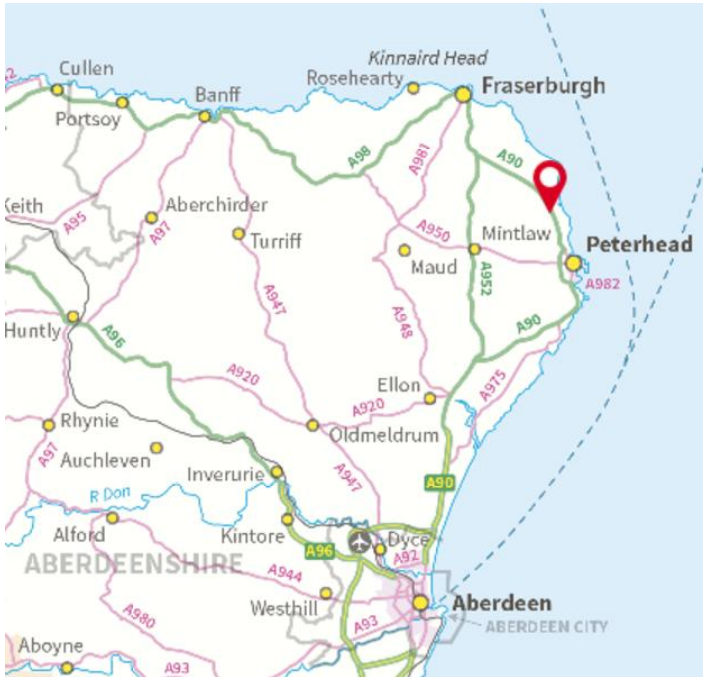
Ensuite Bathroom



Utility Room



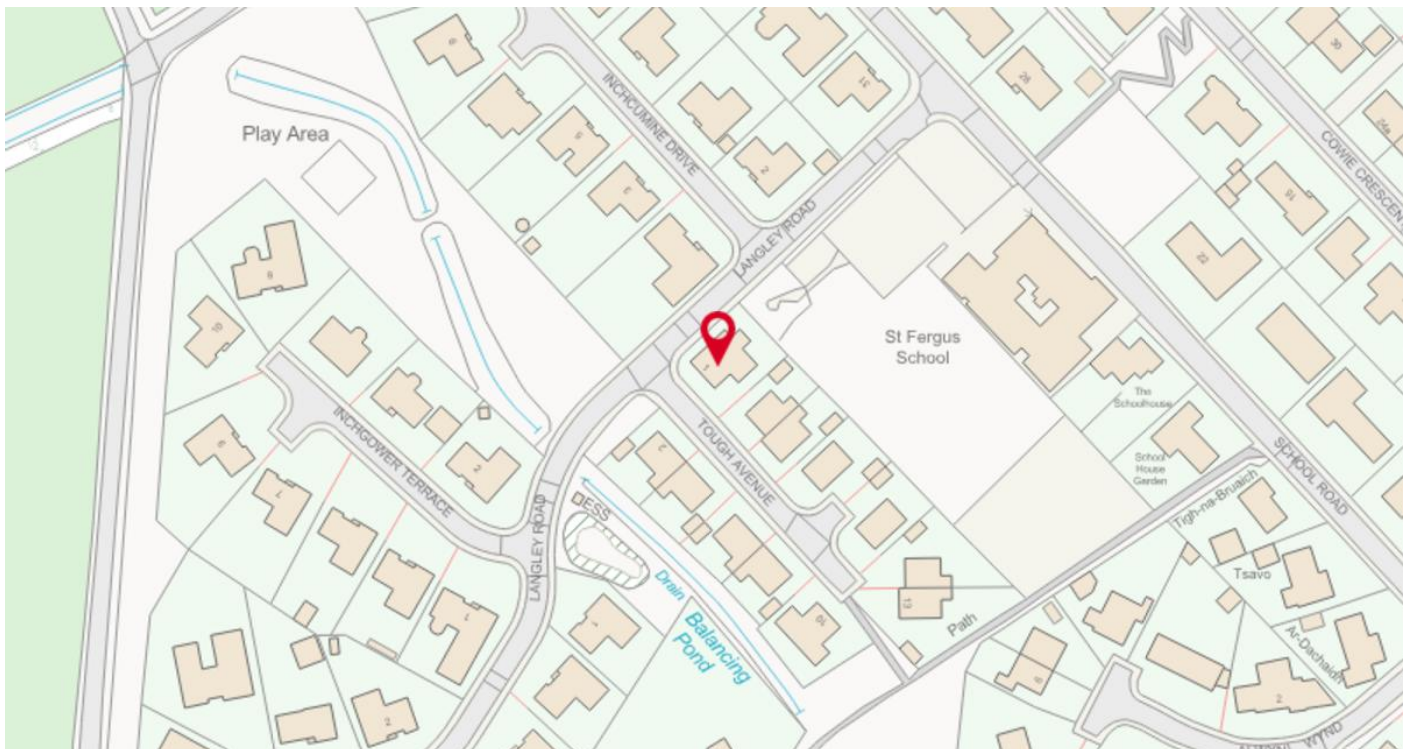
Location



St Fergus is a small village situated on the east coast of Aberdeenshire just 4.5 miles from Peterhead and 13 miles from Fraserburgh.

In the village there is a primary school and a local chippy. A short drive away, Peterhead offers all the amenities needed including shops, bars, restaurants, health care services, and provides secondary schooling. For leisure activities Peterhead has a swimming pool, a gym, sports hall, museums, a library, a cinema, and a theatre.

Dotted along the picturesque coastline there are quaint villages and beaches to spend a peaceful afternoon. Surrounding St Fergus, outdoor enthusiasts can also indulge in activities such as fishing, walking, a variety of water sports, and golfing at the world's 18th oldest golf club. Also not far away is Aden Country Park; a 230 acre park with ample walking, a café, and playpark.



Further Information

For further information please contact:
Empty Homes Team – 01467 533027 or 01467 468640
emptyhomes@aberdeenshire.gov.uk