



From mountain to sea

Low Cost Shared Equity FOR SALE

5 Station Place, Hatton

3 bed semi-detached house
£100,050



Low Cost Shared Equity - Property Schedule

Description

3 bed semi-detached house

Floor Space

89 m²

Included in Sale

Fitted washing machine, cooker and hob. Blinds, some curtains and light fixtures. No guarantee offered with any of these items.

Parking Arrangements

Private driveway

Garden

Private Gardens

Heating Type

Gas central heating/combi boiler

Energy Performance Rating

Not known

Price

£100,050

Income Threshold

£38,000 or less.

Factoring Charge

none

Council Tax Band

Not known

Year Built

2011

Eligibility Criteria

See Guidance Notes for Eligibility Criteria.

Closing Date

Return applications as soon as possible. Applications will be assessed on a first come basis.

Disclaimer

The information in this schedule regarding the specific property has been supplied by the owner and whilst every care has been taken in the preparation of this schedule and the information is believed to be correct, it does not warrant or constitute any offer or contract.

***Factoring fees may be subject to change and may require an initial deposit. Please discuss with your solicitor if nominated.**

Front of Property



Back Garden



Living Room



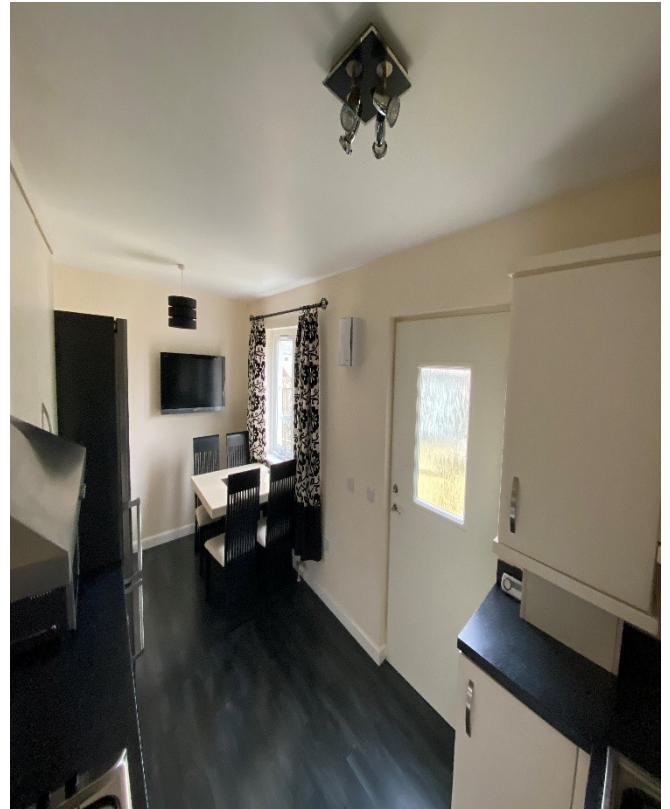
Downstairs Shower Room



Kitchen & Dining Area



Alternative View of Kitchen & Dining Area



Downstairs Hallway



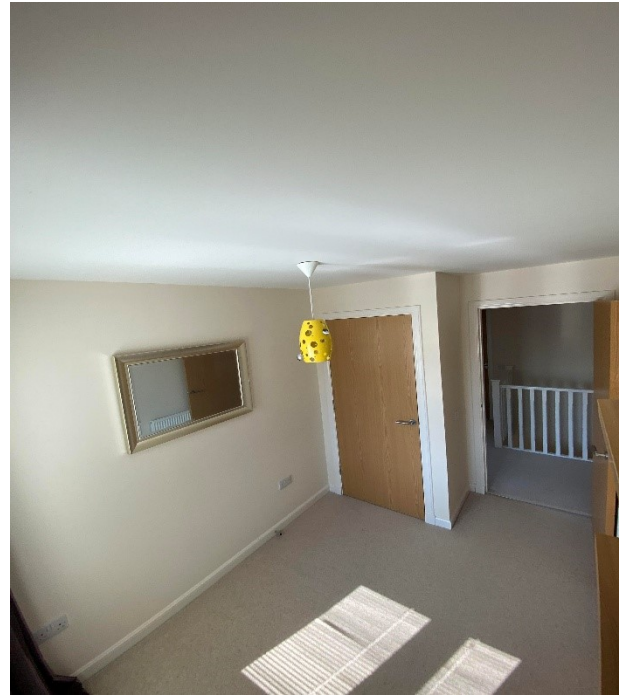
Alternative View of Downstairs Hallway



Master Bedroom



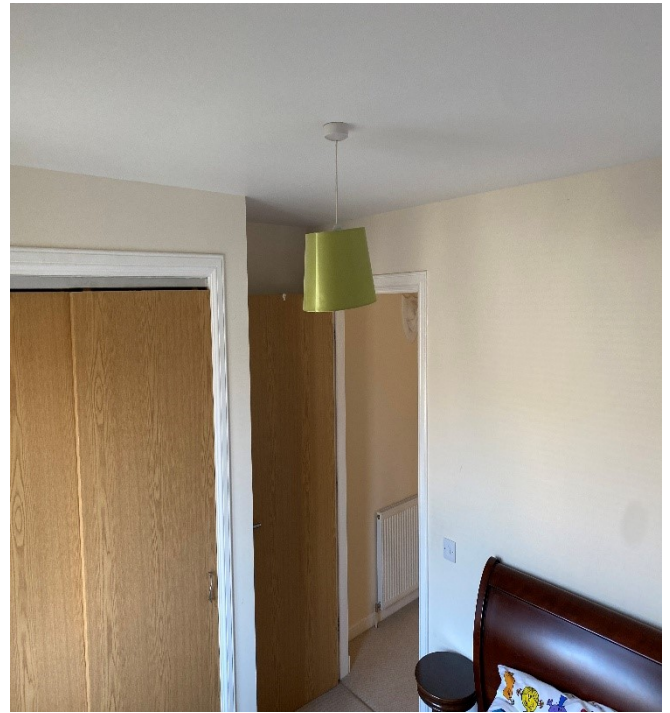
Bedroom 3



Bedroom 2



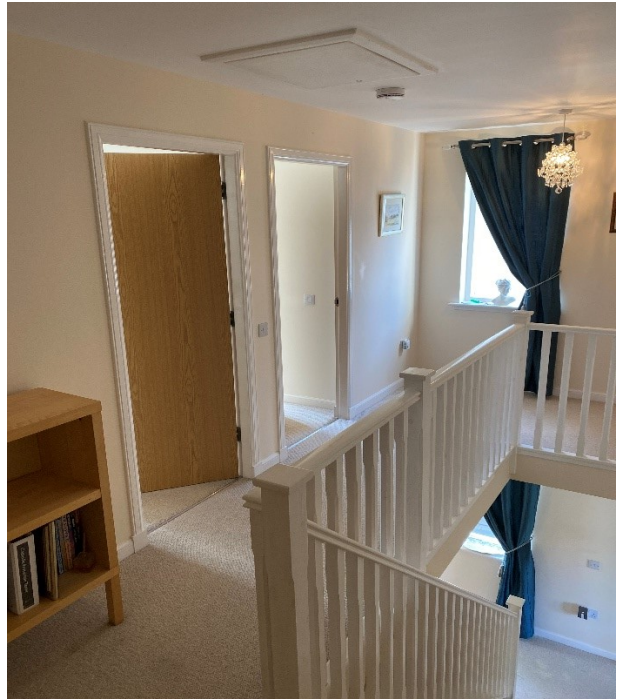
Alternative View of Bedroom 2



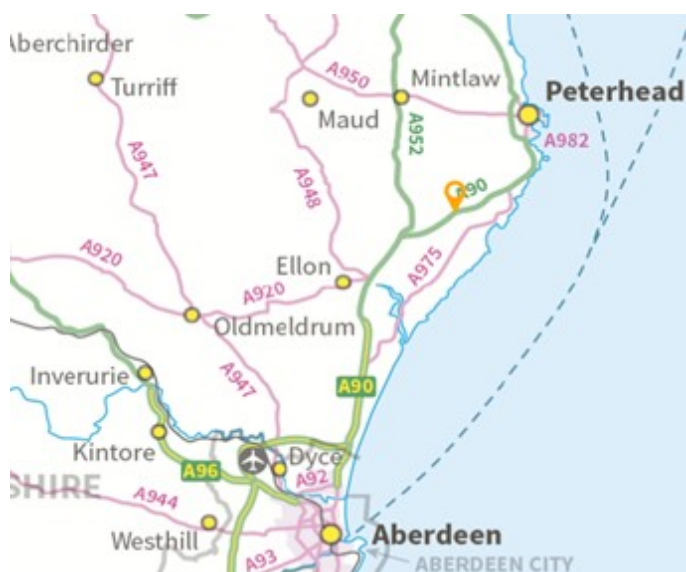
Upstairs Bathroom



Upstairs Hallway



Location



Hatton is a small Village within easy commuting distance of Aberdeen, Dyce and Peterhead and approximately a 10 minute drive from Ellon. There is a local shop, post office, doctors' surgery and primary school. A public hall next to the primary school offers a wide range of activities for all ages.



Further Information

For further information please contact:
Development Officer - 01467 539457
LCHO@aberdeenshire.gov.uk