

From mountain to sea

# Low Cost Shared Equity FOR SALE

10 Bothiebrigs Drive, Marywell, AB12 4LA

2 Bed Semi Detached House  
£89,760



# Low Cost Shared Equity - Property Schedule

## Description

2 bed semi-detached house

## Price

£89,760

## Floor Space

66 m<sup>2</sup>

## Income Threshold

£34,000 or less.

## Included in Sale

Dishwasher, Fridge Freezer and Washing Machine

## Factoring Charge

PMC Property Management £17.00 per month. Overall estimated annual (2026/27) £203.53

## Parking Arrangements

Front double driveway

## Council Tax Band

Band D

## Garden

Private garden

## Year Built

2014

## Heating Type

Gas heating / Combi boiler. New boiler fitted March 2026

## Eligibility Criteria

See Guidance Notes for Eligibility Criteria.

## Energy Performance Rating

Unknown

## Closing Date

Return applications as soon as possible. Applications will be assessed on a first come basis.

### Disclaimer

The information in this schedule regarding the specific property has been supplied by the owner and whilst every care has been taken in the preparation of this schedule and the information is believed to be correct; it does not warrant or constitute any offer or contract.

\*Factoring fees may be subject to change and may require an initial deposit. Please discuss with your solicitor if nominated.

---

Front of House



Living Room



Alternate View of Living Room



Alternative View of Living Room



**Kitchen**



**Alternative View of Kitchen**



**Dining/Office Space in Kitchen**



Downstairs Toilet



Alternative View of Downstairs Toilet



Stairway



Upstairs Landing



**Bedroom 1**



**Alternative View of Bedroom 1**



**Alternative View of Bedroom 1**



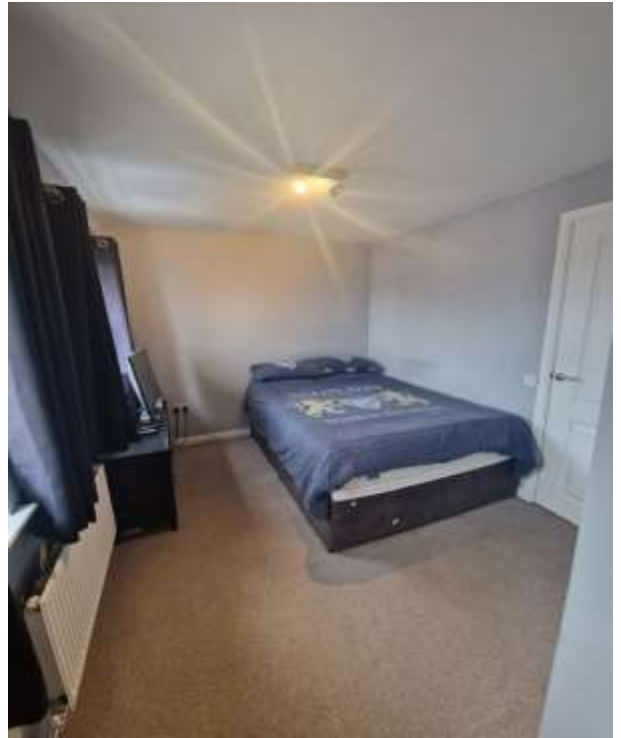
**Alternative View of Bedroom 1**



**Bedroom 2**



**Alternative View of Bedroom 2**



**Bathroom**



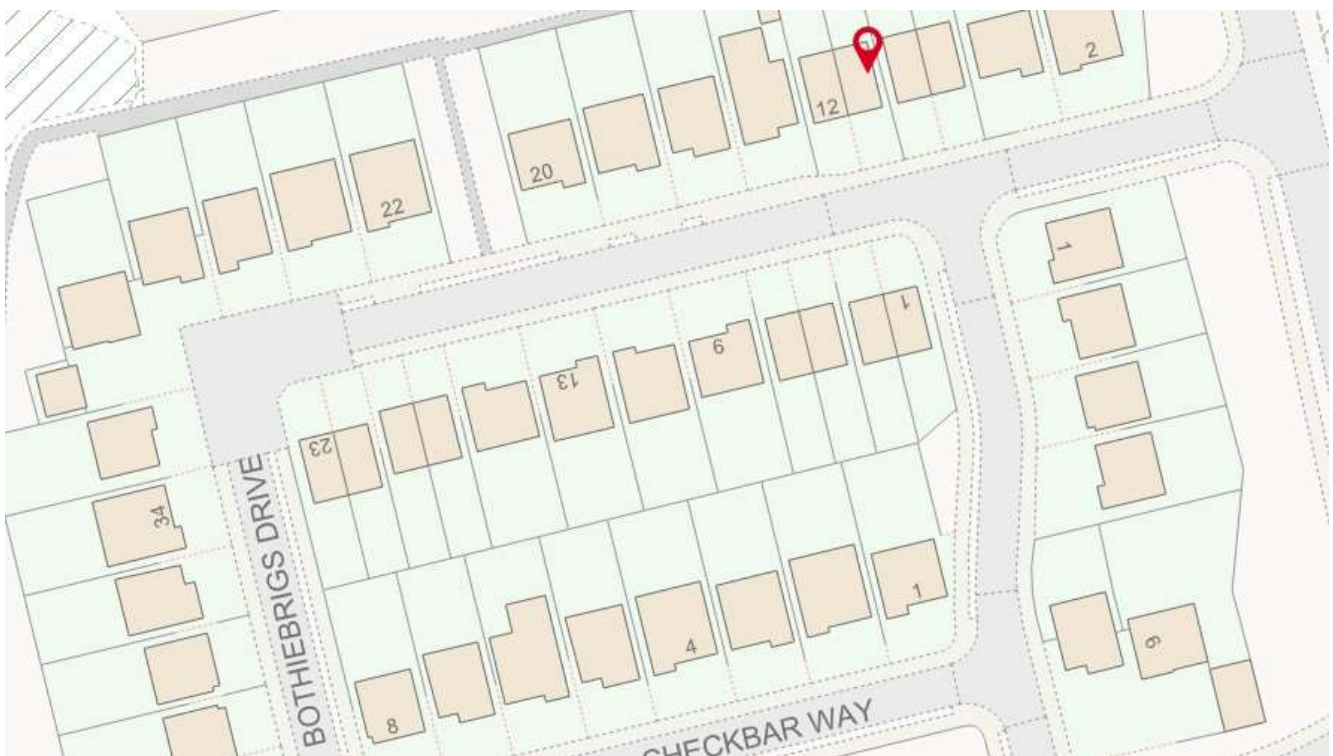
**Back Garden**



## Location



Marywell is located approximately 6 miles south of Aberdeen. It is a convenient location near the North Sea coast offering easy access to the city centre by dual carriageway. A perfect base for commuters to Aberdeen with a good work/life balance.



## Further Information

**For further information please contact:**  
Development Officer - 01467 539457  
[LCHO@aberdeenshire.gov.uk](mailto:LCHO@aberdeenshire.gov.uk)