



From mountain to sea

Empty Property Matchmaker Scheme FOR SALE

7 Donalds Buildings, Nelson Street, Huntly, AB54 8DF

2 bedroom self-contained 1st floor flat
Offers over £80,000



Empty Property Matchmaker Scheme - Property Schedule

Description

2 bedroom 1st floor flat with own entrance door and private off road parking.

Condition of Property

Good condition

Asking Price

Offer over £80,000

Open Market Valuation

£80,000 (Valuation carried out April 2025)

Estate Agent

Murdoch, McMath & Mitchell
[7 Donalds Buildings, Nelson Street, Huntly](#)

Heating Type

Electric – Energy Saving Storage

Energy Performance Rating

Band F

Council Tax Band

Band A

Garden

Large shared garden and drying green. Small private garden. Three private sheds.

Included in Sale

New flooring and brand new kitchen appliances. Light fittings.

Additional Information

Internal renovation and full decorating completed in April 2025.

Interested?

If you are interested in this property please fill out the Interested Buyer Registration form on www.aberdeenshire.gov.uk/housing/matchmaker-scheme-buyers/ and select "Register your Interest".

Email emptyhomes@aberdeenshire.gov.uk if you already have registered a form with us.

Home Report

Please note: Aberdeenshire Council do not hold any home reports for any properties advertised for sale. If you are interested in a property, please fill in the online form to register your interest and we will then pass your details on to the seller to progress.

Disclaimer

The information in this schedule regarding the specific property has been supplied by the owner and whilst every care has been taken in the preparation of the schedule and the information is believed to be correct, it does not warrant or constitute any offer or contract.

Living Room



Alternative View of Living Room



Kitchen



Alternative View of Kitchen



Bedroom 1



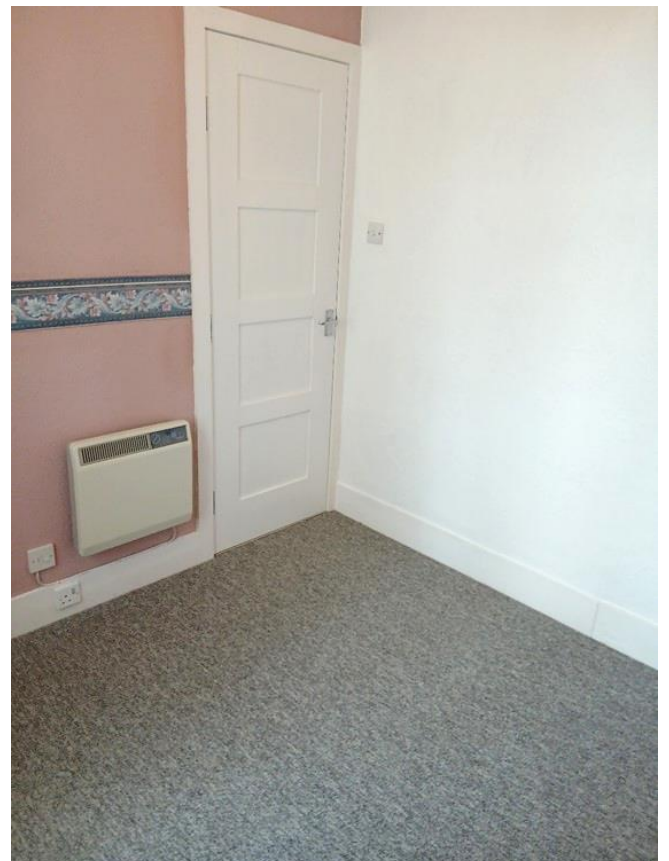
Alternative View of Bedroom 1



Bedroom 2



Alternative View of Bedroom 2



Bathroom



Alternative View of Bathroom



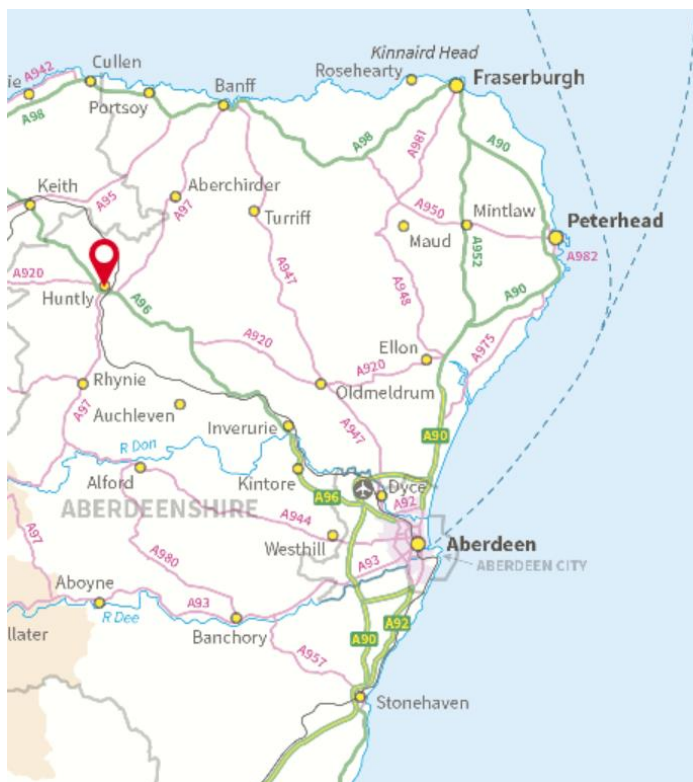
Stairs



Parking Area and Sheds



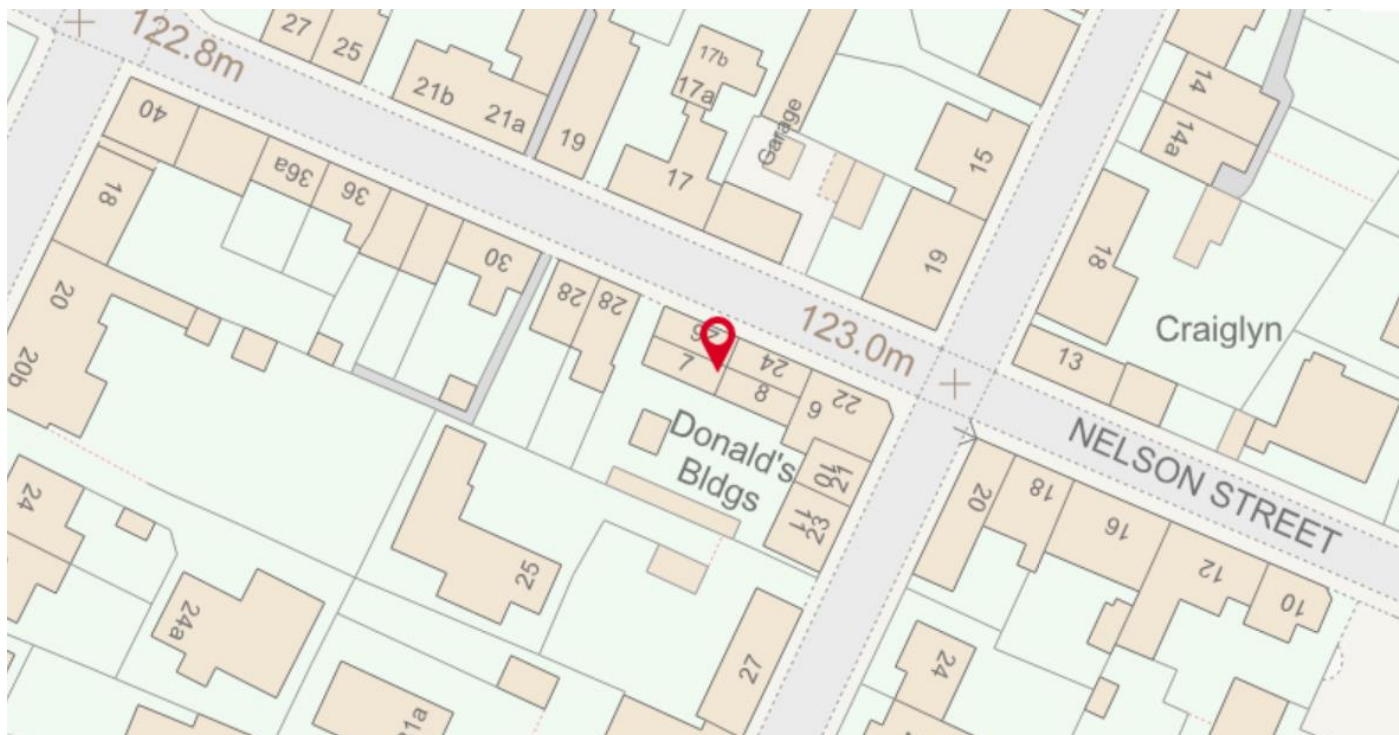
Location



Huntly is a Fairtrade town situated 39 miles from Aberdeen and 28 miles from Elgin, with regular buses and trains in both directions. Huntly Travel Hub offers e-bike hire, Co-wheels community car hire scheme, and bookable community minibus.

The town is well equipped with nursery, primary school and secondary education provision, a range of shops, pubs, eateries, healthcare services, and a local Farmers' Market on the first Saturday of each month. The newly refurbished community-owned building in the historic town square includes a 67-seater cinema/performance space, co-working offices, café, gallery/function spaces alongside learning and activity spaces.

Surrounded by Aberdeenshire countryside, Huntly offers an abundance of recreational activities from walking, fishing, biking, and golf, with bike hire, tubing, cross country and roller skiing at the Huntly Nordic and Outdoor Centre. The majestic ruins of the historic 12th-century Huntly Castle sit beside the scenic River Deveron and is open year-round.



Further Information

For further information please contact:
Empty Homes Team – 01467 533027 or 01467 468640
emptyhomes@aberdeenshire.gov.uk