



From mountain to sea

Empty Property Matchmaker Scheme FOR SALE

40 Prince Street, Peterhead, AB42 1QE

**3 bedroom mid-terraced house
Fixed price £165,000**



Empty Property Matchmaker Scheme - Property Schedule

Description

3 bedroom mid-terraced house with garage and on-street parking

Condition of Property

Good condition with only cosmetic updates needed

Asking Price

£165,000 fixed price

Open Market Valuation

£170,000

Estate Agent

Adam Flowerdew & Reynolds
[40 Prince Street, Peterhead | AFR Solicitors](#)

Heating Type

Gas

Energy Performance Rating

Band E

Council Tax Band

Band C

Garden

Medium garden with shed and decking

Included in Sale

White goods. Lighting fixtures. Floor coverings.

Additional Information

Utility room

Interested?

If you are interested in this property please fill out the Interested Buyer Registration form on www.aberdeenshire.gov.uk/housing/matchmaker-scheme-buyers/ and select "Register your Interest".

Email emptyhomes@aberdeenshire.gov.uk if you already have registered a form with us.

Home Report

Please note: Aberdeenshire Council do not hold any home reports for any properties advertised for sale. If you are interested in a property, please fill in the online form to register your interest and we will then pass your details on to the seller to progress.

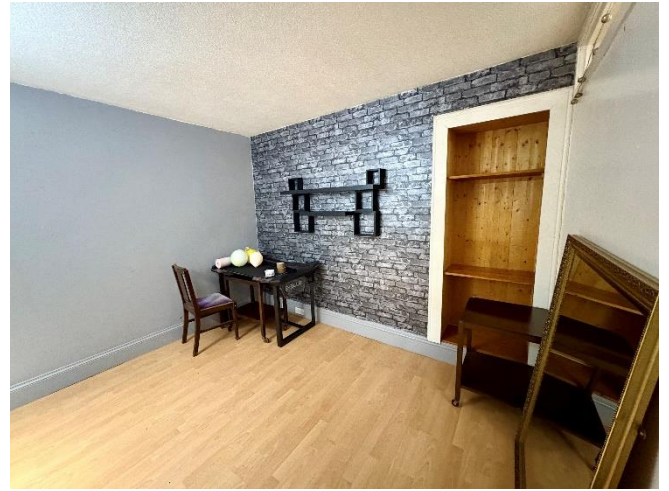
Disclaimer

The information in this schedule regarding the specific property has been supplied by the owner and whilst every care has been taken in the preparation of the schedule and the information is believed to be correct, it does not warrant or constitute any offer or contract.

Living Room



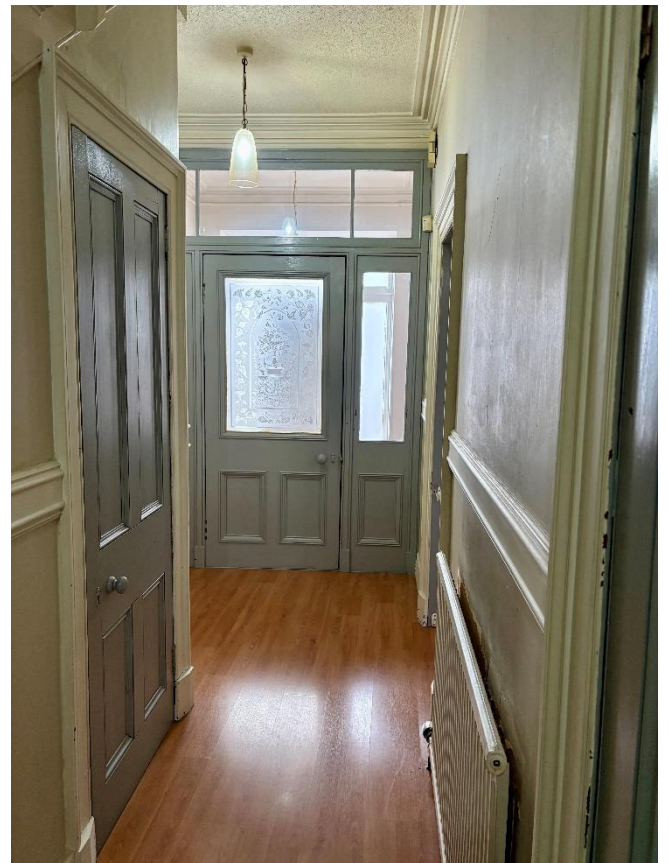
Dining Room



Kitchen



Hallway



Bedroom 1



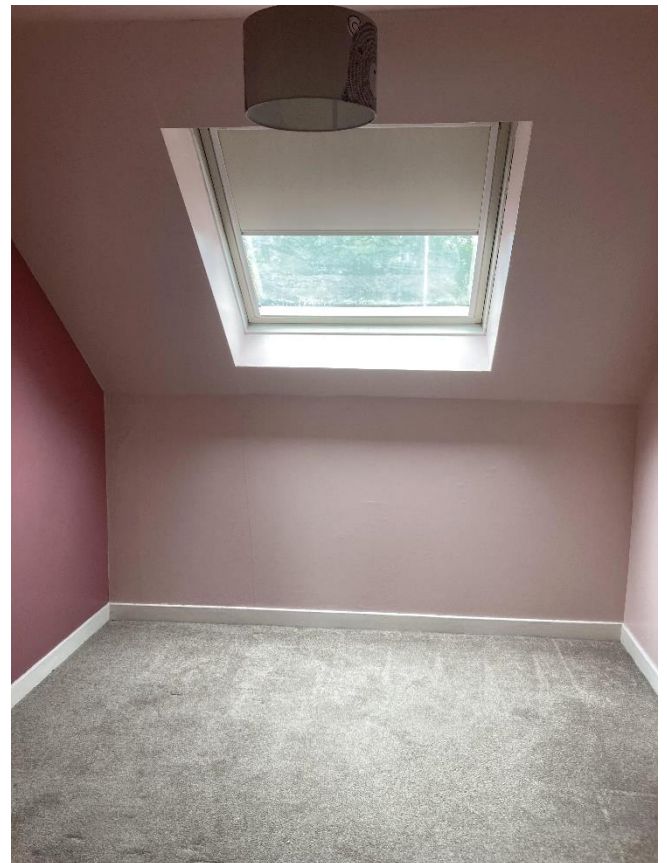
Alternative View of Bedroom 1



Bedroom 2



Bedroom 3



Stairs



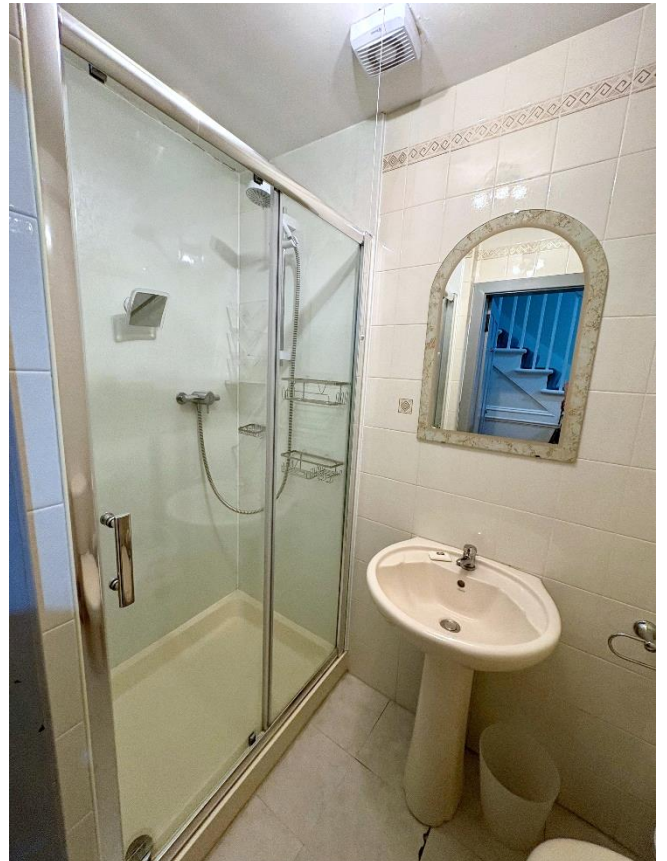
Hallway



Bathroom



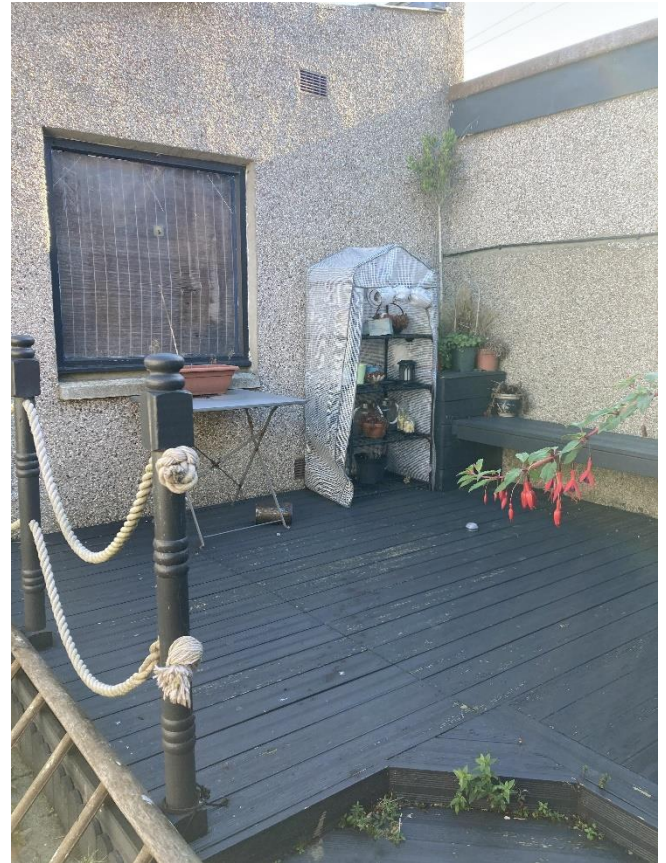
Shower Room (Downstairs)



Back Garden



Alternative View of Back Garden



Alternative View of Back Garden



Garage



| Location | |
|----------|-----|
| 1 | 1 |
| 2 | 2 |
| 3 | 3 |
| 4 | 4 |
| 5 | 5 |
| 6 | 6 |
| 7 | 7 |
| 8 | 8 |
| 9 | 9 |
| 10 | 10 |
| 11 | 11 |
| 12 | 12 |
| 13 | 13 |
| 14 | 14 |
| 15 | 15 |
| 16 | 16 |
| 17 | 17 |
| 18 | 18 |
| 19 | 19 |
| 20 | 20 |
| 21 | 21 |
| 22 | 22 |
| 23 | 23 |
| 24 | 24 |
| 25 | 25 |
| 26 | 26 |
| 27 | 27 |
| 28 | 28 |
| 29 | 29 |
| 30 | 30 |
| 31 | 31 |
| 32 | 32 |
| 33 | 33 |
| 34 | 34 |
| 35 | 35 |
| 36 | 36 |
| 37 | 37 |
| 38 | 38 |
| 39 | 39 |
| 40 | 40 |
| 41 | 41 |
| 42 | 42 |
| 43 | 43 |
| 44 | 44 |
| 45 | 45 |
| 46 | 46 |
| 47 | 47 |
| 48 | 48 |
| 49 | 49 |
| 50 | 50 |
| 51 | 51 |
| 52 | 52 |
| 53 | 53 |
| 54 | 54 |
| 55 | 55 |
| 56 | 56 |
| 57 | 57 |
| 58 | 58 |
| 59 | 59 |
| 60 | 60 |
| 61 | 61 |
| 62 | 62 |
| 63 | 63 |
| 64 | 64 |
| 65 | 65 |
| 66 | 66 |
| 67 | 67 |
| 68 | 68 |
| 69 | 69 |
| 70 | 70 |
| 71 | 71 |
| 72 | 72 |
| 73 | 73 |
| 74 | 74 |
| 75 | 75 |
| 76 | 76 |
| 77 | 77 |
| 78 | 78 |
| 79 | 79 |
| 80 | 80 |
| 81 | 81 |
| 82 | 82 |
| 83 | 83 |
| 84 | 84 |
| 85 | 85 |
| 86 | 86 |
| 87 | 87 |
| 88 | 88 |
| 89 | 89 |
| 90 | 90 |
| 91 | 91 |
| 92 | 92 |
| 93 | 93 |
| 94 | 94 |
| 95 | 95 |
| 96 | 96 |
| 97 | 97 |
| 98 | 98 |
| 99 | 99 |
| 100 | 100 |



Known locally as the 'Blue Toon', the coastal town of Peterhead lies in the Northeast of Aberdeenshire. Built around the fishing industry it has one of the biggest fishing ports in Europe and is conveniently situated near two other major settlements; only 32 miles from Aberdeen and 17 miles from Fraserburgh.

Peterhead offers all the amenities needed including shops, bars, restaurants, health care services, and provides several educational institutions, including primary schools and a secondary school. For leisure activities there is a swimming pool, a gym, sports hall, museums, a library, a cinema, and a theatre.

Dotted along the picturesque coastline there are quaint villages and beaches, great for a day out exploring. Outdoor enthusiasts can also indulge in activities such as golfing at the world's 18th oldest golf club, fishing, and water sports, making Peterhead ideal for both relaxation and leisure.

Further Information

For further information please contact:
Empty Homes Team – 01467 533027 or 01467 468640
emptyhomes@aberdeenshire.gov.uk