

From mountain to sea

Low Cost Shared Equity FOR SALE

2 Auchtygall Avenue, Peterhead, AB42 3PT

**3 Bed Semi-Detached House
£144,725**



Low Cost Shared Equity - Property Schedule

Description

3 bed semi-detached house

Price

£144,725

Floor Space

Not known

Income Threshold

£53,000 or less.

Included in Sale

All carpets/flooring/blinds are included in sale. White goods and sheds and light fittings can be included at a cost.

Factoring Charge

Under negotiations (was £21/month)

Parking Arrangements

Private driveway for 2 cars

Council Tax Band

Band D

Garden

Private garden

Year Built

2015

Heating Type

Gas

Eligibility Criteria

See Guidance Notes for Eligibility Criteria.

Energy Performance Rating

Band B

Closing Date

Return applications as soon as possible. Applications will be assessed on a first come basis.

Disclaimer

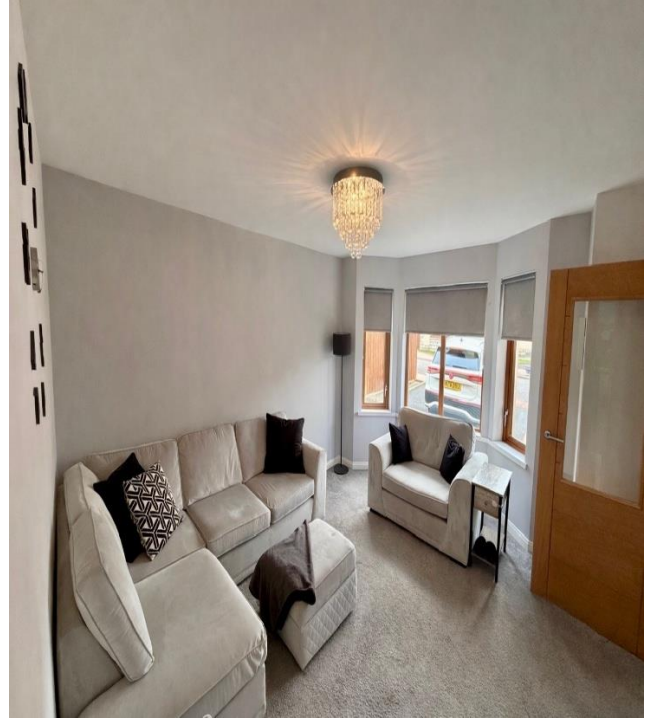
The information in this schedule regarding the specific property has been supplied by the owner and whilst every care has been taken in the preparation of this schedule and the information is believed to be correct; it does not warrant or constitute any offer or contract.

*Factoring fees may be subject to change and may require an initial deposit. Please discuss with your solicitor if nominated.

Front of House



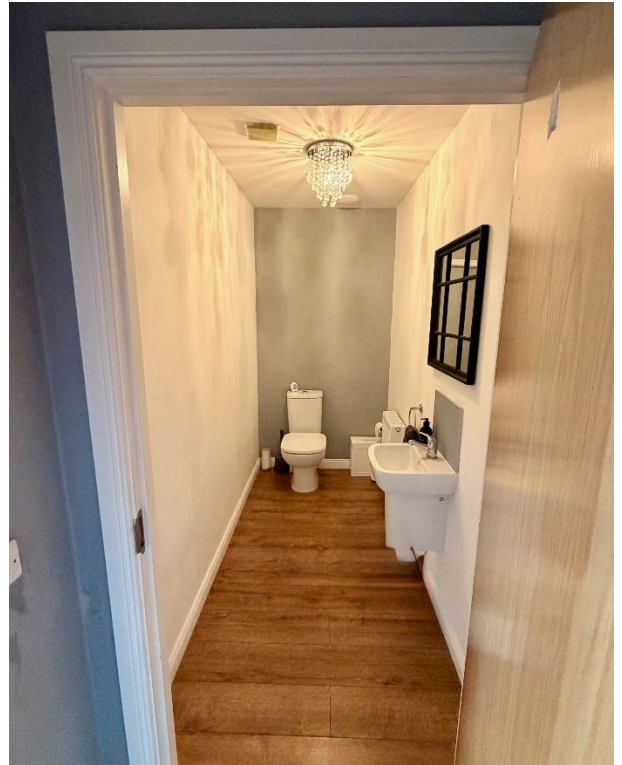
Living Room



Kitchen



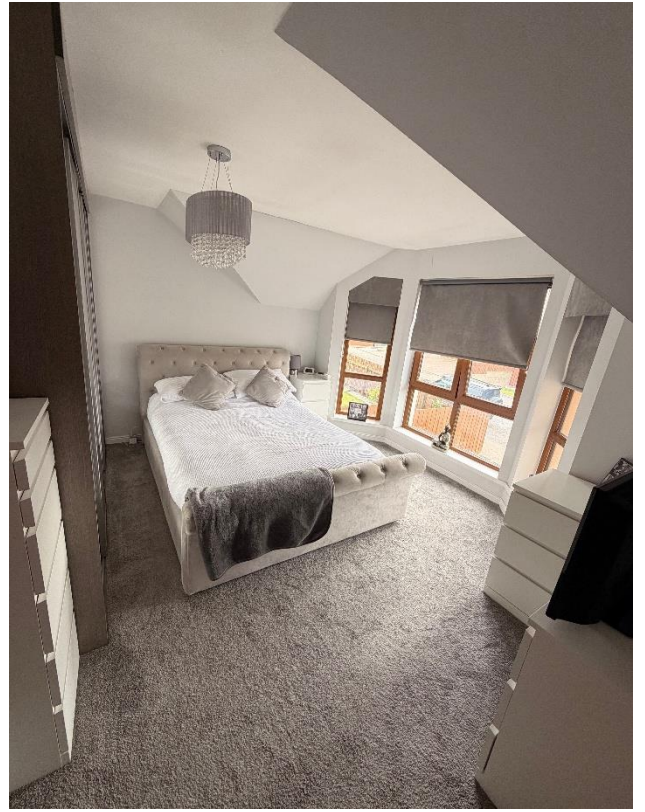
Downstairs Toilet



Bedroom 1



Alternative View of Bedroom 1



Bedroom 2



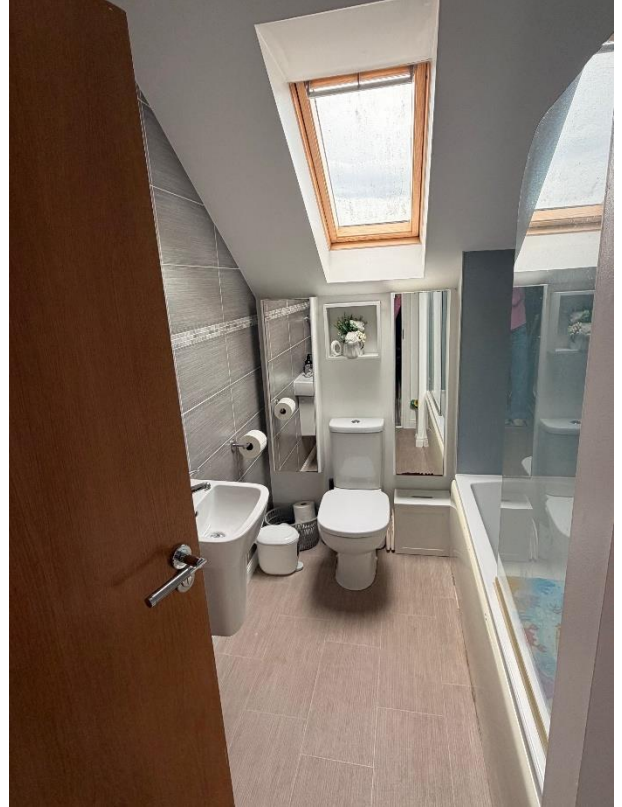
Bedroom 3



Upstairs Landing



Bathroom



Garden



Location



Peterhead is a coastal fishing town on the A90 approximately 30 miles north of Aberdeen which is ideal for commuting to the city, the airport and nearby towns such as Ellon. There are good bus links to the city and surrounding areas. Peterhead has a good range of amenities including a variety of shops, supermarkets, restaurants, hotels, sporting facilities and a community centre. There is a range of primary schools and Peterhead Academy provides good secondary schooling.



Further Information

For further information please contact:
Development Officer - 01467 539457
LCHO@aberdeenshire.gov.uk