

From mountain to sea

# Low Cost Shared Equity FOR SALE

**60 Ladysbridge Drive, Ladysbridge AB45 2LF**

**3 bed semi-detached house  
£129,420**



# Low Cost Shared Equity - Property Schedule

## Description

3 bed semi- detached house.

This property has been repainted back to neutral colours.

## Floor Space

Not known

## Included in Sale

Integrated fridge/freezer, hob and oven All carpets and blinds and outdoor shed

## Parking Arrangements

Driveway at front for two large cars.

## Garden

Private garden.

## Heating Type

Gas

## Energy Performance Rating

Band A

## Price

£129,420

## Income Threshold

£48,000 or less.

## Factoring Charge

£50 refundable fee plus quarterly bills between £50 to £70. for maintenance of common areas such as grass. Latest bill £40.12.

## Council Tax Band

Band C

## Year Built

2019

## Eligibility Criteria

See Guidance Notes for Eligibility Criteria.

## Closing Date

Return applications as soon as possible. Applications will be assessed on a first come basis.

### Disclaimer

The information in this schedule regarding the specific property has been supplied by the owner and whilst every care has been taken in the preparation of this schedule and the information is believed to be correct, it does not warrant or constitute any offer or contract.

\*Factoring fees may be subject to change and may require an initial deposit. Please discuss with your solicitor if nominated.

---

Front Entrance



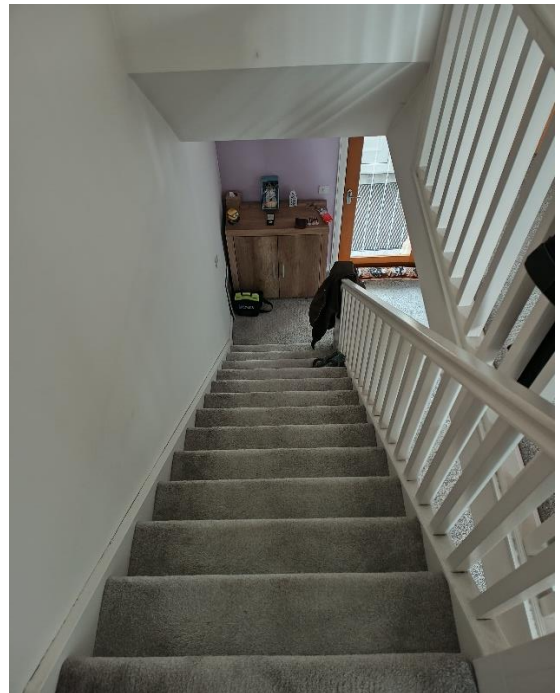
Living Room



Downstairs Toilet



Stairway





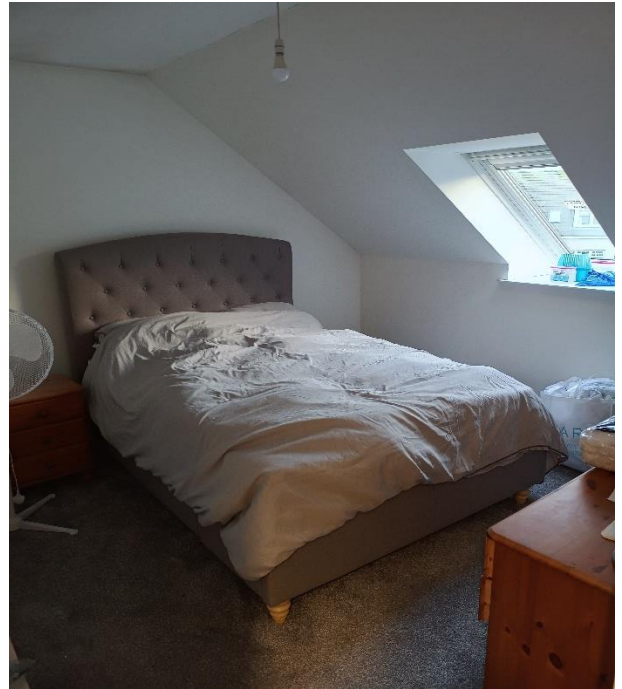
## Kitchen



**Bedroom 1**



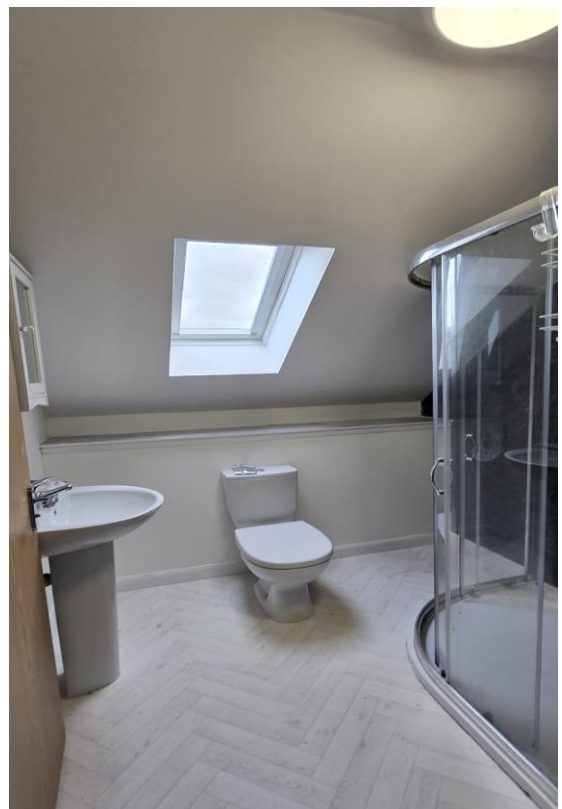
**Bedroom 2**



**Bedroom 3**

Photo not available

**Shower Room**



## Back Garden





## Location



Ladysbridge Village is situated amidst the scenic countryside in the historic county of Banffshire near the fishing village of Whitehills with its local shops, hotels, fish restaurant, primary school, marina and historic harbour.

It lies only 2 miles from the town of Banff which provides a range of shopping and leisure facilities including a renowned golf course, new community leisure centre.



## Further Information

**For further information please contact:**  
Development Officer - 01467 539457  
[LCHO@aberdeenshire.gov.uk](mailto:LCHO@aberdeenshire.gov.uk)