

From mountain to sea

Low Cost Shared Equity FOR SALE

9 Main Road East, Echt

3 bed end terrace house
£153,750



Low Cost Shared Equity - Property Schedule

Description

3 bed end terrace house

Price

£153,750

Floor Space

Unknown

Income Threshold

£56,000 or less.

Included in Sale

Flooring and Blinds

Factoring Charge

£16/month – Newton property

Parking Arrangements

Driveway (2 Cars)

Council Tax Band

Band D

Garden

Fully enclosed private garden

Year Built

2013

Heating Type

Oil Heating

Eligibility Criteria

See Guidance Notes for Eligibility Criteria.

Energy Performance Rating

Unknown

Closing Date

Return applications as soon as possible.
Applications will be assessed on a first come basis.

Disclaimer

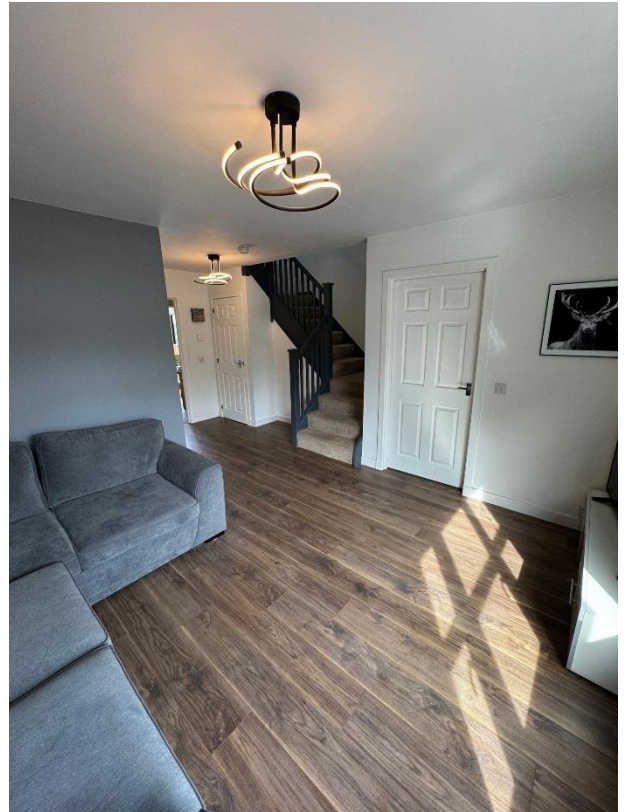
The information in this schedule regarding the specific property has been supplied by the owner and whilst every care has been taken in the preparation of this schedule and the information is believed to be correct, it does not warrant or constitute any offer or contract.

***Factoring fees may be subject to change and may require an initial deposit. Please discuss with your solicitor if nominated.**

Living Room



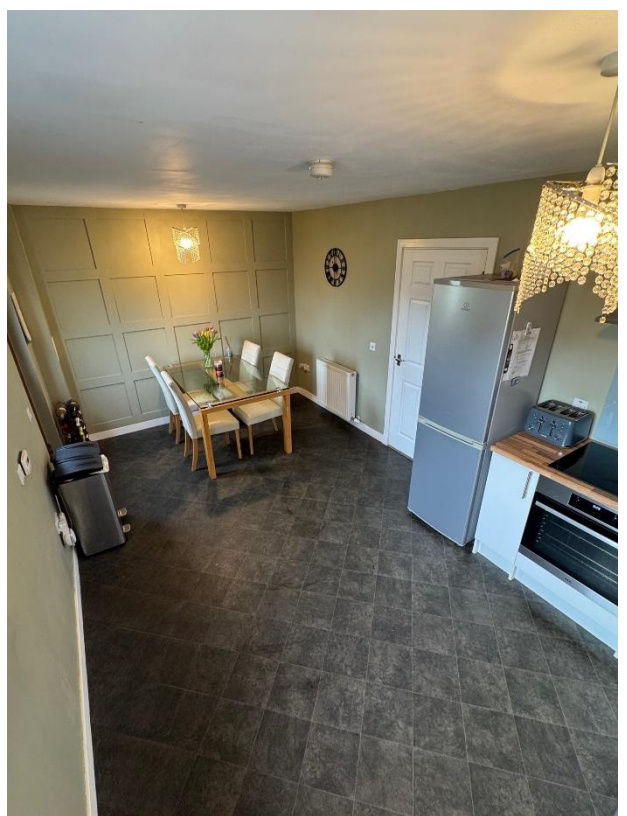
Alternative View of Living Room



Kitchen



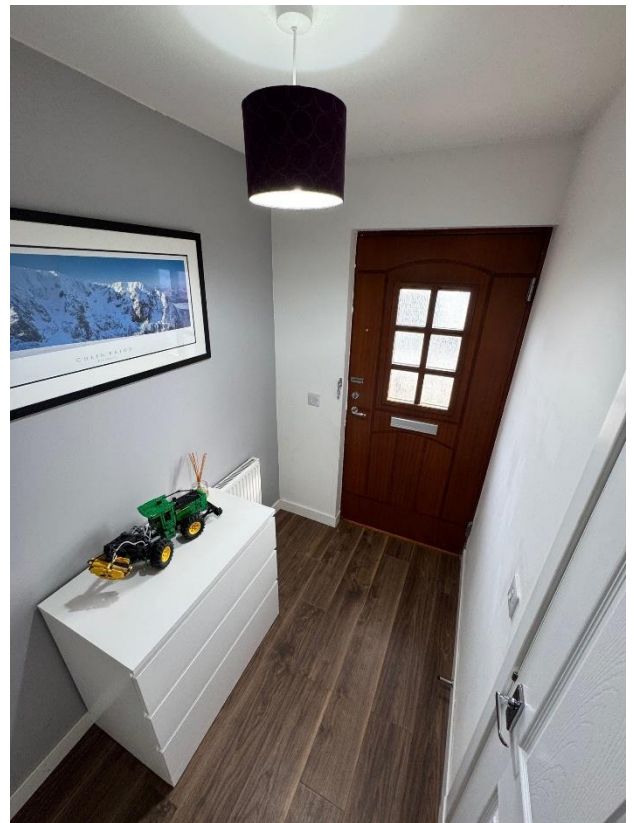
Alternative View of Kitchen



Vestibule



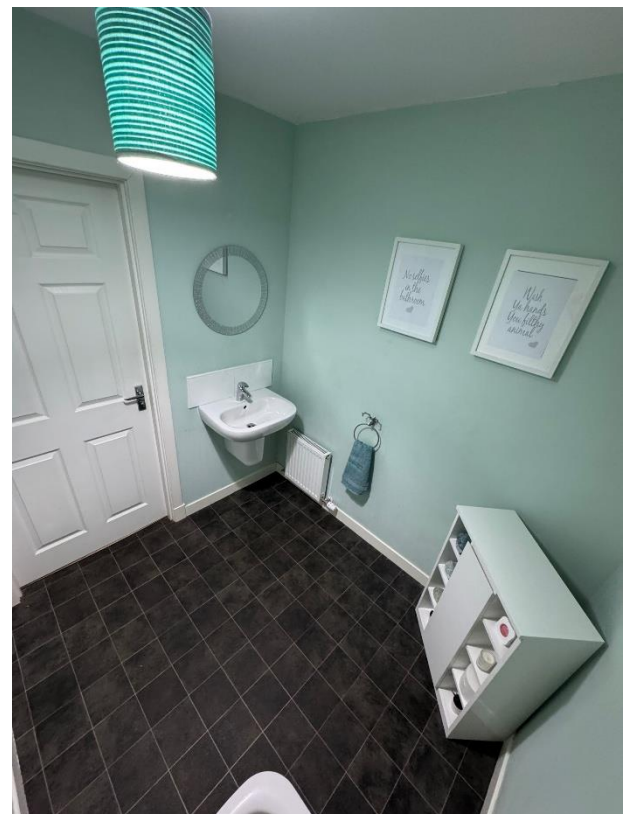
Alternative View of Vestibule



Downstairs Toilet



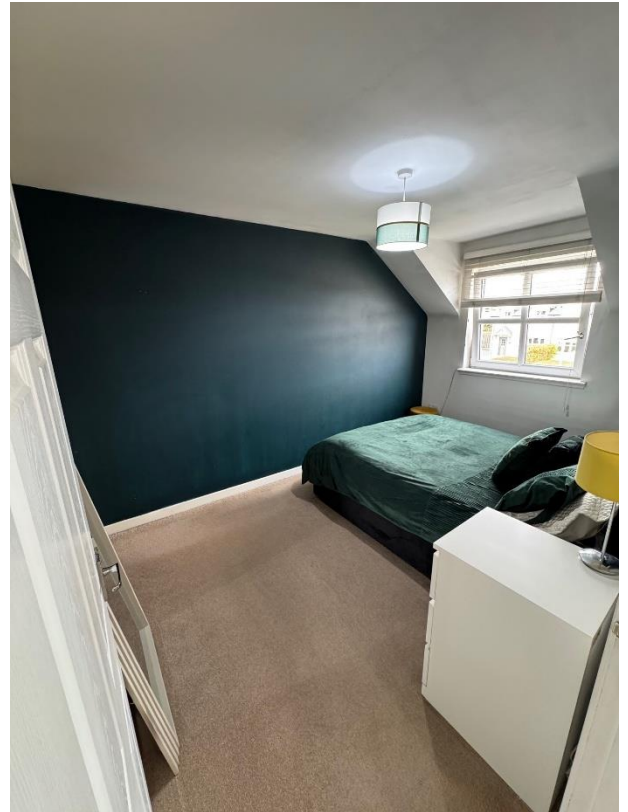
Alternative View of Downstairs Toilet



Bedroom 1



Alternative View of Bedroom 1



Bedroom 2



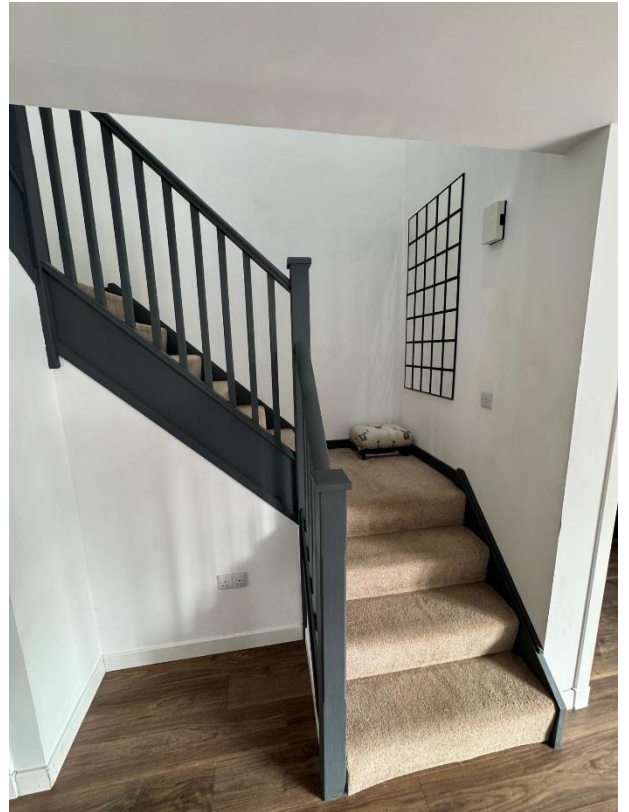
Alternative View of Bedroom 2



Bedroom 3



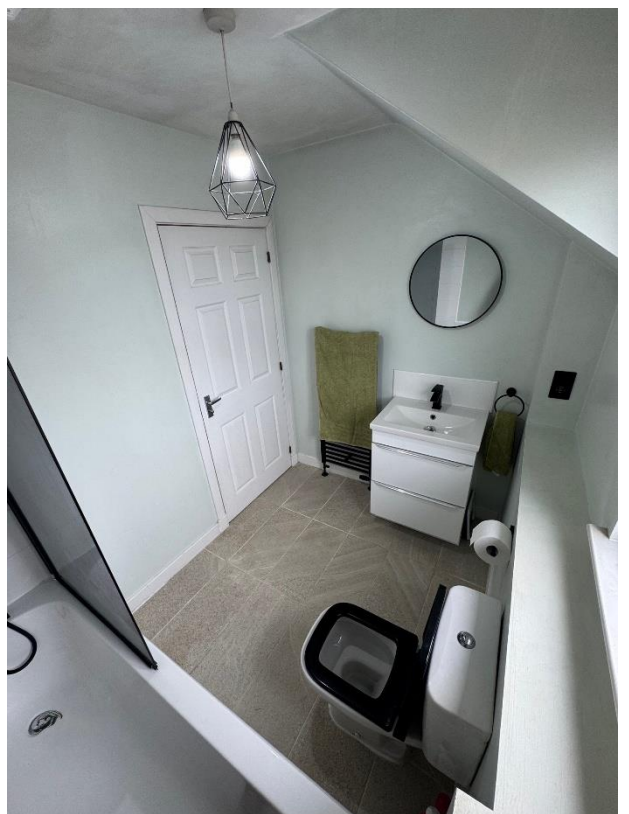
Stairs



Bathroom



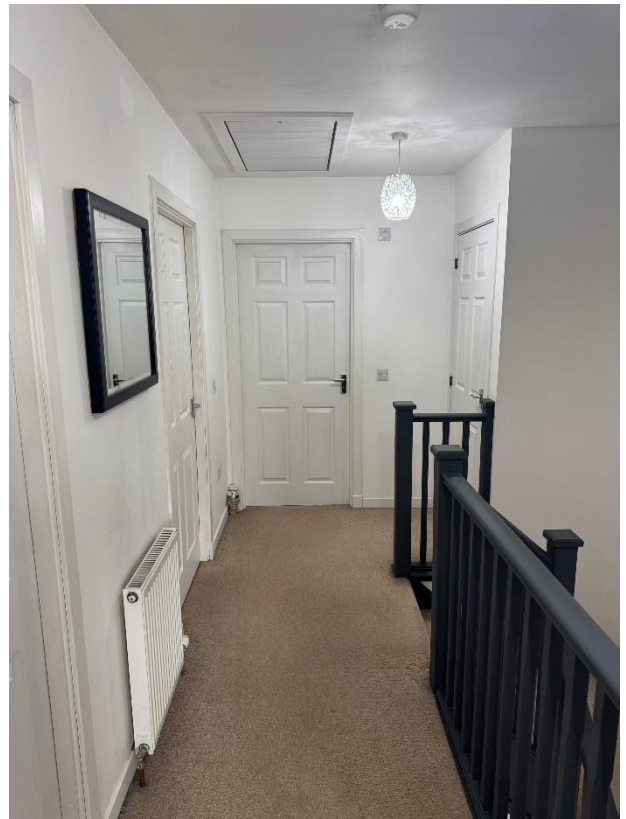
Alternative View of Bathroom



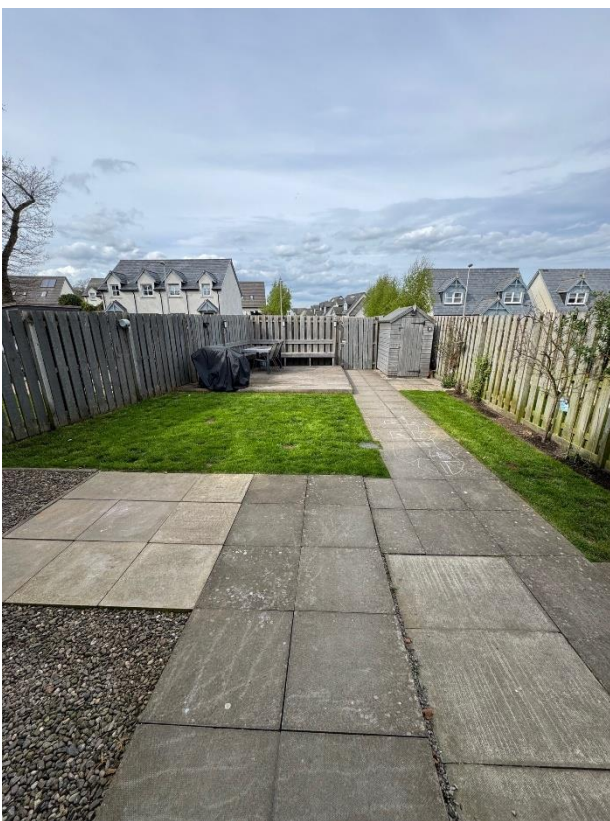
Upper Hall



Alternative View of Upper Hall



Back Garden



Alternative View of Back Garden



Location



Echt is a small village situated only 12 miles west of Aberdeen in picturesque countryside. The village has, primary school, church, large park and access to countryside walks close by. A few minutes' drive away is the town of Westhill where there are a wide range of amenities on offer.



Further Information

For further information please contact:
Development Officer - 01467 539457
LCHO@aberdeenshire.gov.uk